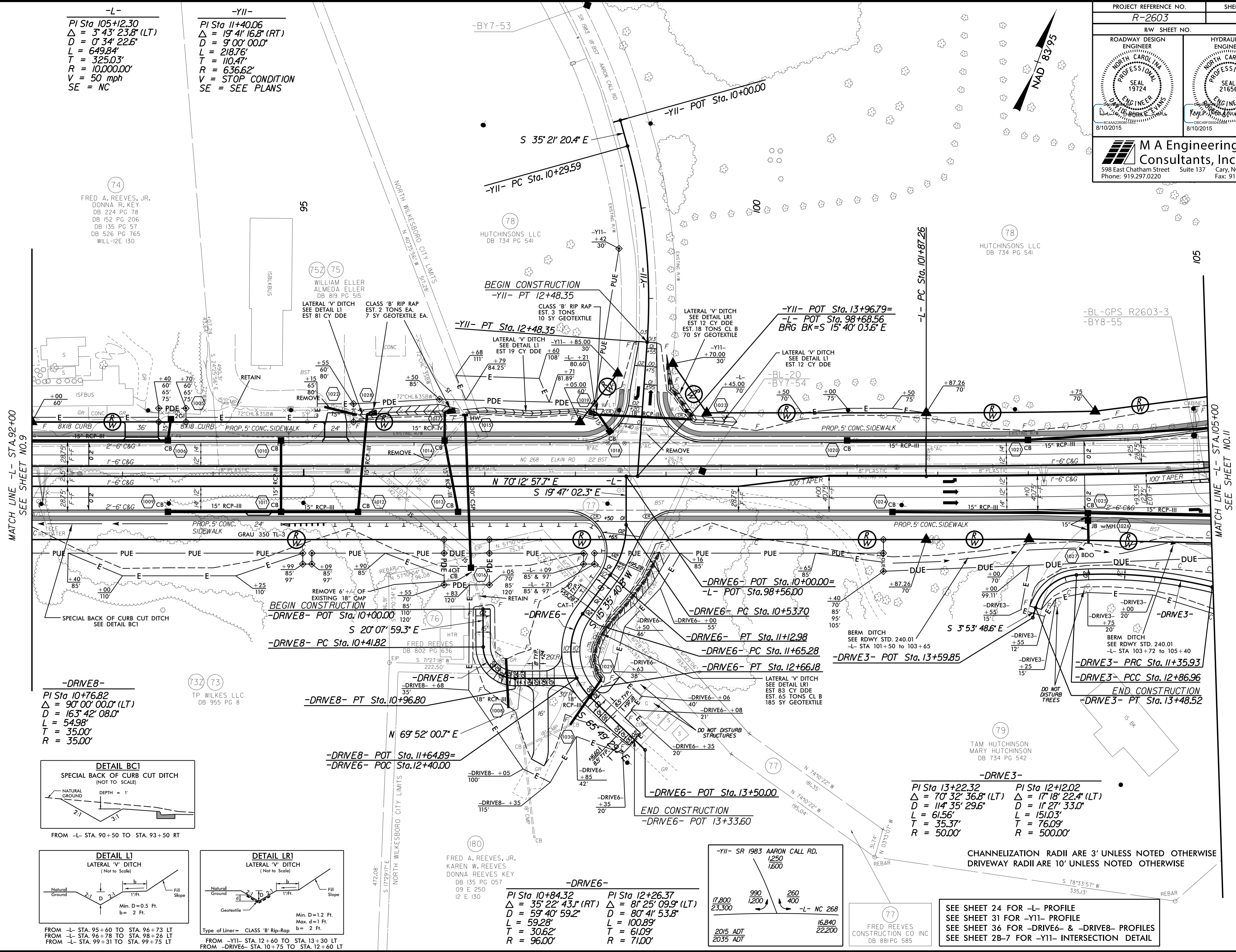


PROJECT REFERENCE NO. <b>R-2603</b>	SHEET NO. <b>10</b>
RW SHEET NO.	
ROADWAY DESIGN ENGINEER <b>PROFESSIONAL SEAL 19724</b> 8/10/2015	HYDRAULICS ENGINEER <b>PROFESSIONAL SEAL 21656</b> 8/10/2015
<b>M A Engineering Consultants, Inc.</b> NC License: F-1610 598 East Chatham Street Suite 137 Cary, NC 27511 Phone: 919.297.0220 Fax: 919.297.0221	

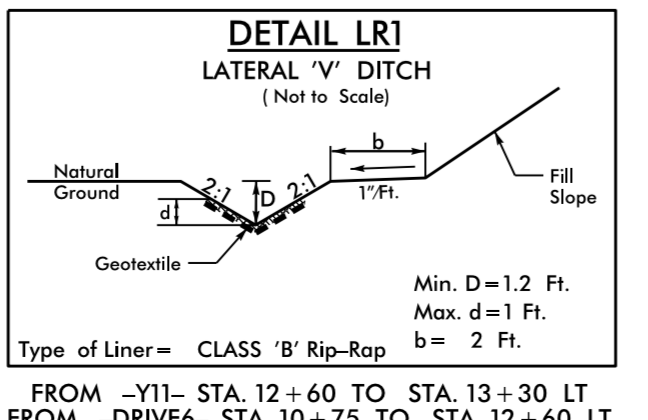
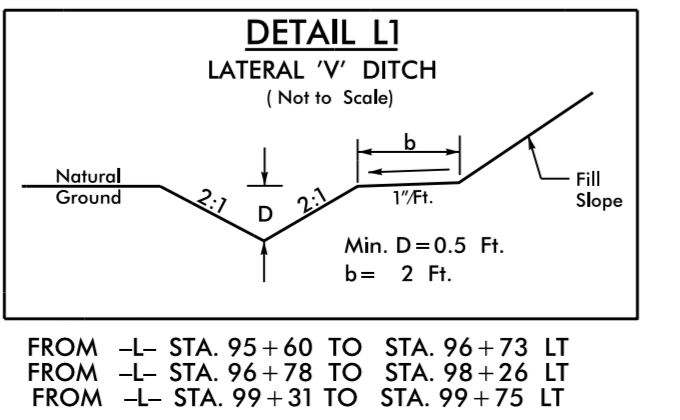
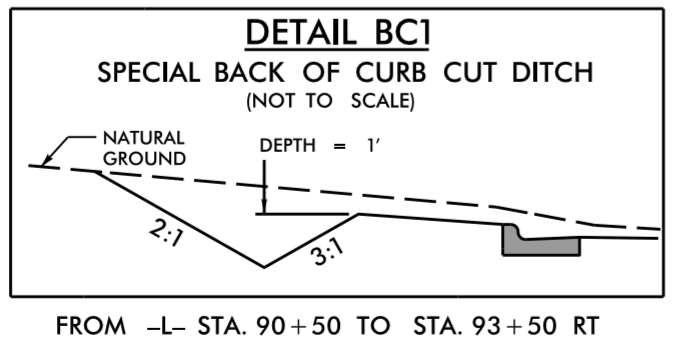
**-L-**  
 PI Sta 105+12.30  
 $\Delta = 3^\circ 43' 23.8" (LT)$   
 $D = 0' 34' 22.6"$   
 $L = 649.84'$   
 $T = 325.03'$   
 $R = 10,000.00'$   
 $V = 50 \text{ mph}$   
 $SE = NC$

**-YII-**  
 PI Sta 11+40.06  
 $\Delta = 19^\circ 41' 16.8" (RT)$   
 $D = 9' 00' 00.0"$   
 $L = 218.76'$   
 $T = 110.47'$   
 $R = 636.62'$   
 $V = \text{STOP CONDITION}$   
 $SE = \text{SEE PLANS}$



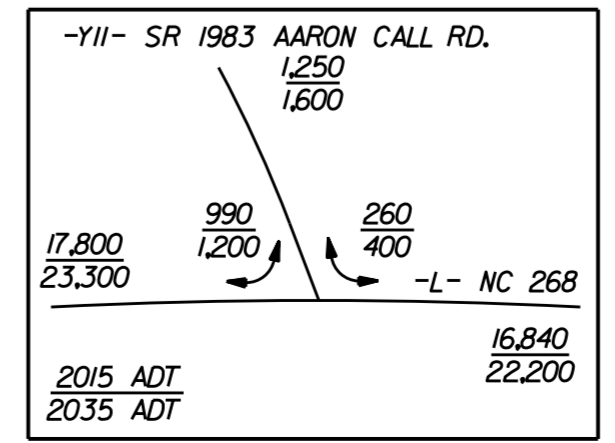
MATCH LINE -L- STA. 92+00 SEE SHEET NO. 9

MATCH LINE -L- STA. 105+00 SEE SHEET NO. 11



**-DRIVE6-**

PI Sta 10+84.32 $\Delta = 35^\circ 22' 43.1" (RT)$ $D = 59' 40" 59.2"$ $L = 59.28'$ $T = 30.62'$ $R = 96.00'$	PI Sta 12+26.37 $\Delta = 8^\circ 25' 09.9" (LT)$ $D = 80' 41" 53.8"$ $L = 100.89'$ $T = 61.09'$ $R = 71.00'$
--	--



**77**  
FRED REEVES CONSTRUCTION CO INC  
DB 881 PG 585

SEE SHEET 24 FOR -L- PROFILE  
 SEE SHEET 31 FOR -YII- PROFILE  
 SEE SHEET 36 FOR -DRIVE6- & -DRIVE8- PROFILES  
 SEE SHEET 28-7 FOR -YII- INTERSECTION DETAIL

CHANNELIZATION RADII ARE 3' UNLESS NOTED OTHERWISE  
 DRIVEWAY RADII ARE 10' UNLESS NOTED OTHERWISE

REVISIONS

8/17/19

7/31/2015  
10:45:00 AM  
pr-oj\p2603-Rdy-ush10.dgn