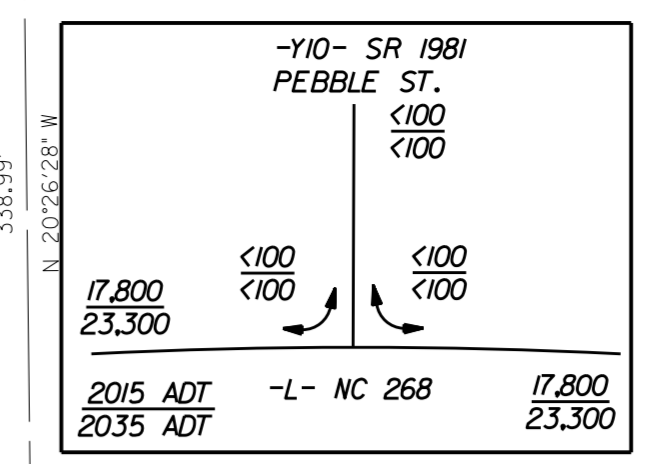
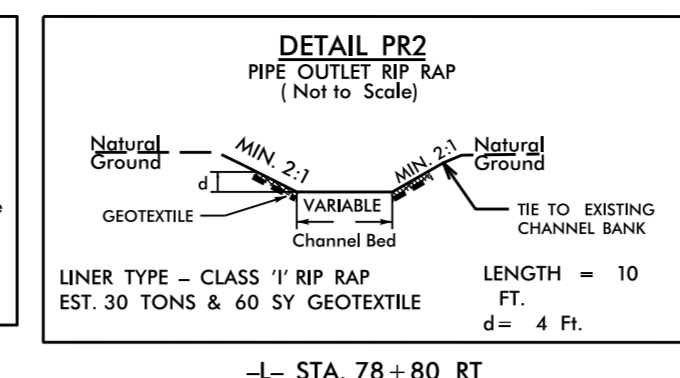
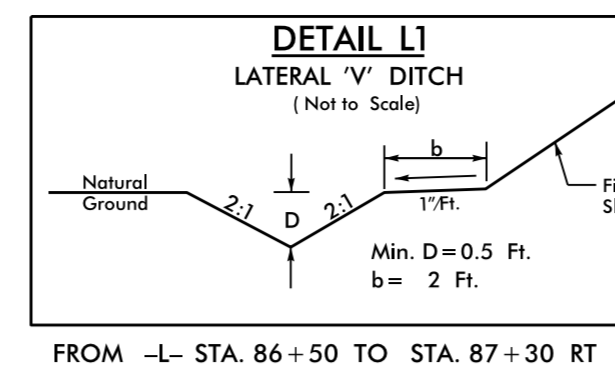
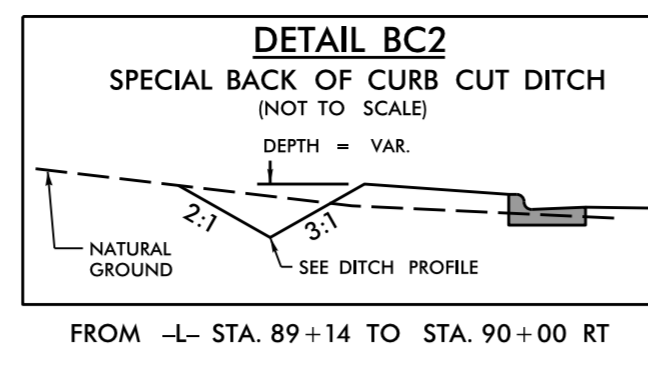
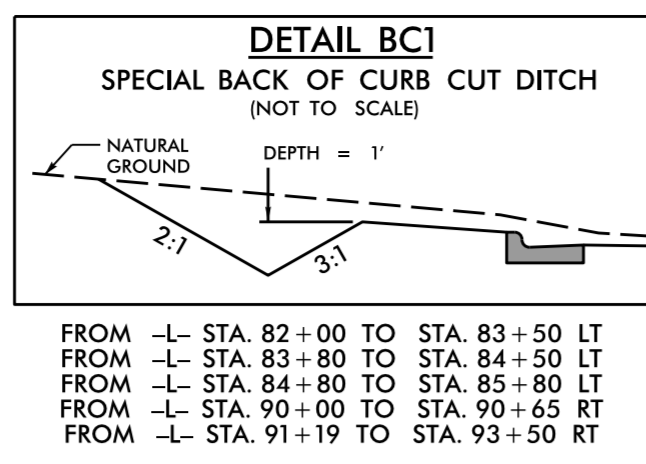
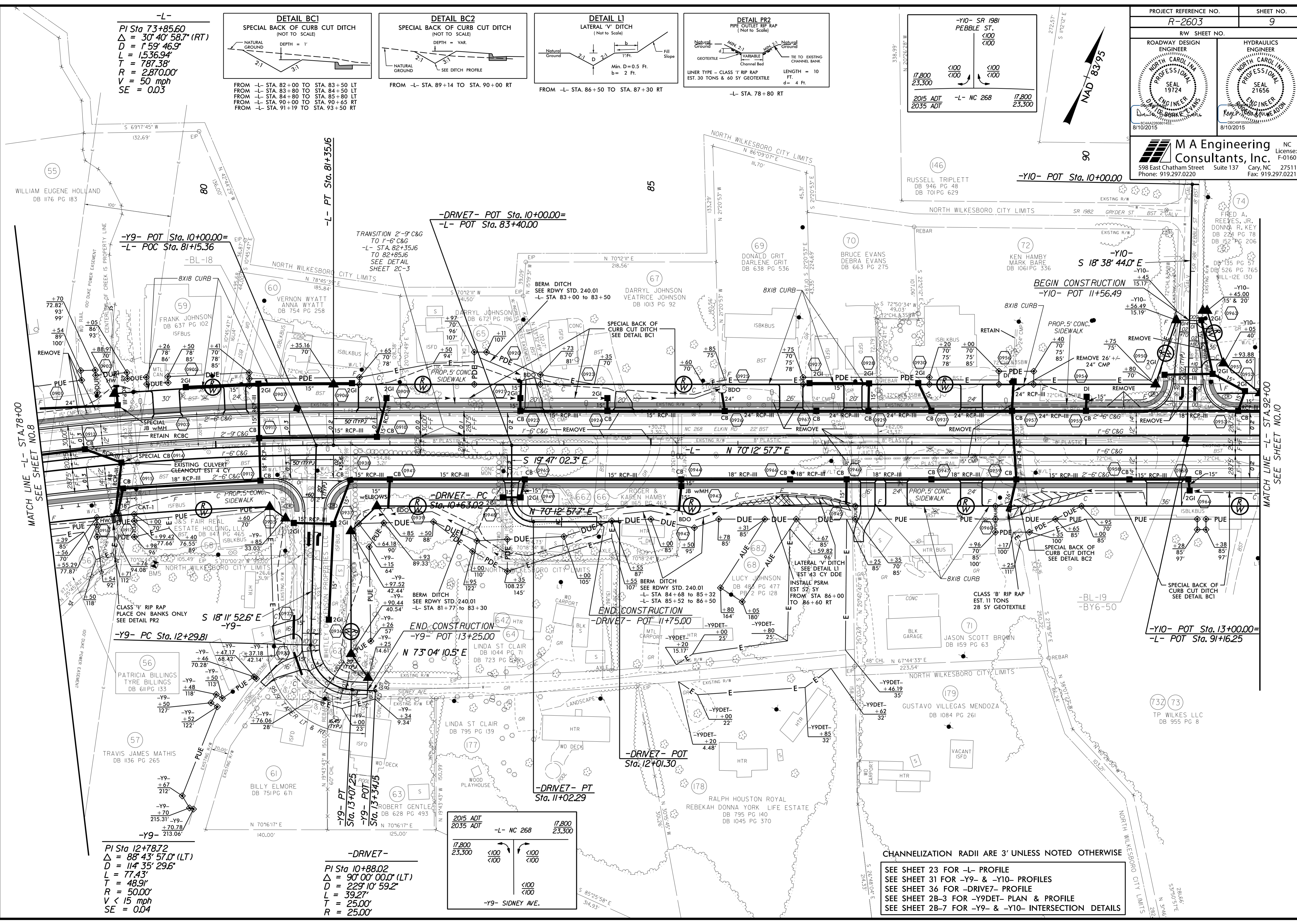


PROJECT REFERENCE NO. R-2603	SHEET NO. 9
RW SHEET NO.	
ROADWAY DESIGN ENGINEER PROFESSIONAL SEAL 19724 D. B. BORKE, INC. 8/10/2015	HYDRAULICS ENGINEER PROFESSIONAL SEAL 21656 ROY L. HARRIS & ASSOCIATES, INC. 8/10/2015
M A Engineering Consultants, Inc. 598 East Chatham Street Suite 137 Cary, NC 27511 Phone: 919.297.0220 Fax: 919.297.0221 NC License: F-0160	



-L-
 $PI\ Sta\ 73+85.60$
 $\Delta = 30^\circ 40' 58.7'' (RT)$
 $D = 159' 46.9''$
 $L = 1536.94'$
 $T = 787.38'$
 $R = 2870.00'$
 $V = 50\ mph$
 $SE = 0.03$



MATCH LINE -L- STA. 78+00
SEE SHEET NO. 8

MATCH LINE -L- STA. 92+00
SEE SHEET NO. 10

-Y9- PC Sta. 12+29.81

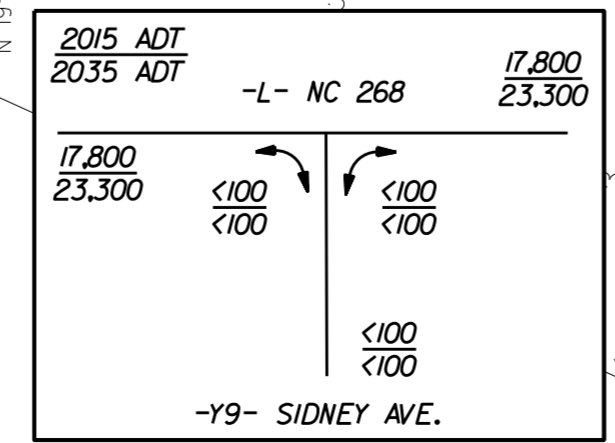
END CONSTRUCTION -Y9- POT 13+25.00

END CONSTRUCTION -DRIVE7- POT 11+75.00

-Y10- POT Sta. 13+00.00 = -L- POT Sta. 91+16.25

PI Sta 12+78.72
 $\Delta = 88^\circ 43' 57.0'' (LT)$
 $D = 114' 35' 29.6''$
 $L = 77.43'$
 $T = 48.91'$
 $R = 50.00'$
 $V < 15\ mph$
 $SE = 0.04$

-DRIVE7-
 $PI\ Sta\ 10+88.02$
 $\Delta = 90^\circ 00' 00.0'' (LT)$
 $D = 229' 10' 59.2''$
 $L = 39.27'$
 $T = 25.00'$
 $R = 25.00'$



CHANNELIZATION RADII ARE 3' UNLESS NOTED OTHERWISE
 SEE SHEET 23 FOR -L- PROFILE
 SEE SHEET 31 FOR -Y9- & -Y10- PROFILES
 SEE SHEET 36 FOR -DRIVE7- PROFILE
 SEE SHEET 2B-3 FOR -Y9DET- PLAN & PROFILE
 SEE SHEET 2B-7 FOR -Y9- & -Y10- INTERSECTION DETAILS

7/31/2015
10:45:32 AM
pr-oj\p2603_Rdy-ps\sh09.dgn