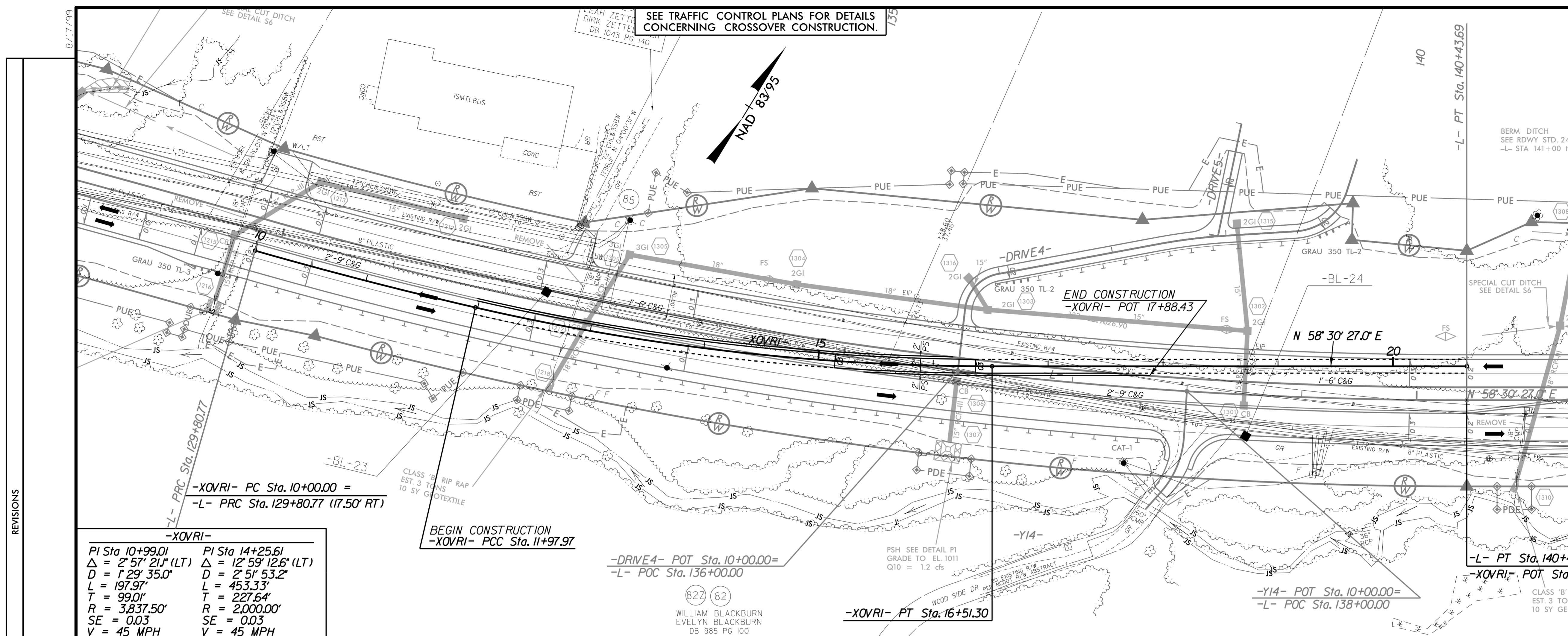


PROJECT REFERENCE NO. R-2603	SHEET NO. 2B-9
RW SHEET NO.	
ROADWAY DESIGN ENGINEER CARLINA PROFESSIONAL SEAL 19724 8/10/2015	HYDRAULICS ENGINEER CARLINA PROFESSIONAL SEAL 21656 8/10/2015
M A Engineering Consultants, Inc. 598 East Chatham Street Suite 137 Cary, NC 27511 Phone: 919.297.0220 Fax: 919.297.0221	



-XOVRI-

PI Sta 10+99.01	PI Sta 14+25.61
$\Delta = 2^\circ 57' 21''$ (LT)	$\Delta = 12^\circ 59' 12.6''$ (LT)
$D = 129' 35.0''$	$D = 2' 51' 53.2''$
$L = 197.97'$	$L = 453.33'$
$T = 99.01'$	$T = 227.64'$
$R = 3,837.50'$	$R = 2,000.00'$
$SE = 0.03$	$SE = 0.03$
$V = 45$ MPH	$V = 45$ MPH

-DRIVE4- POT Sta. 10+00.00 =
-L- POC Sta. 136+00.00

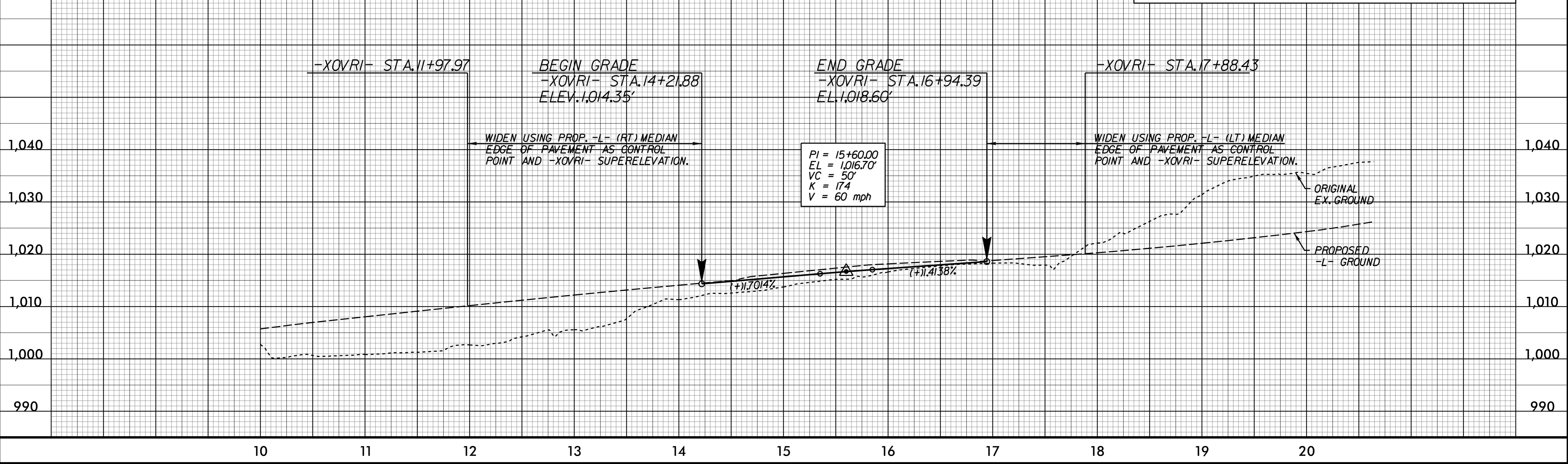
-XOVRI- PT Sta. 16+51.30

-Y14- POT Sta. 10+00.00 =
-L- POC Sta. 138+00.00

-L- PT Sta. 140+43.69 (29.50' LT) =
-XOVRI- POT Sta. 20+64.24

-XOVRI-

NOTE:
THE GRADE AS SHOWN TIES TO THE PROPOSED -L- CONSTRUCTION 1.5' BELOW FINAL GRADE. THE GRADE MAY BE ADJUSTED TO SUIT FIELD CONDITIONS AT THE TIME OF CROSSOVER CONSTRUCTION AT THE DIRECTION OF THE ENGINEER.



REVISIONS

7/2/2015
T:\50831\2015\proj\2603\RDY\sh02B-09.dgn