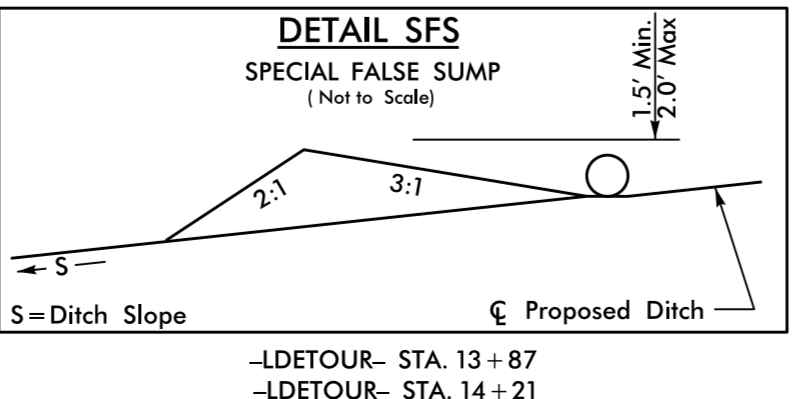
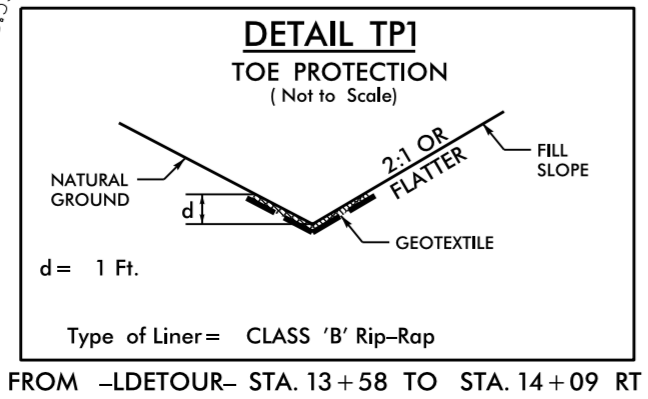
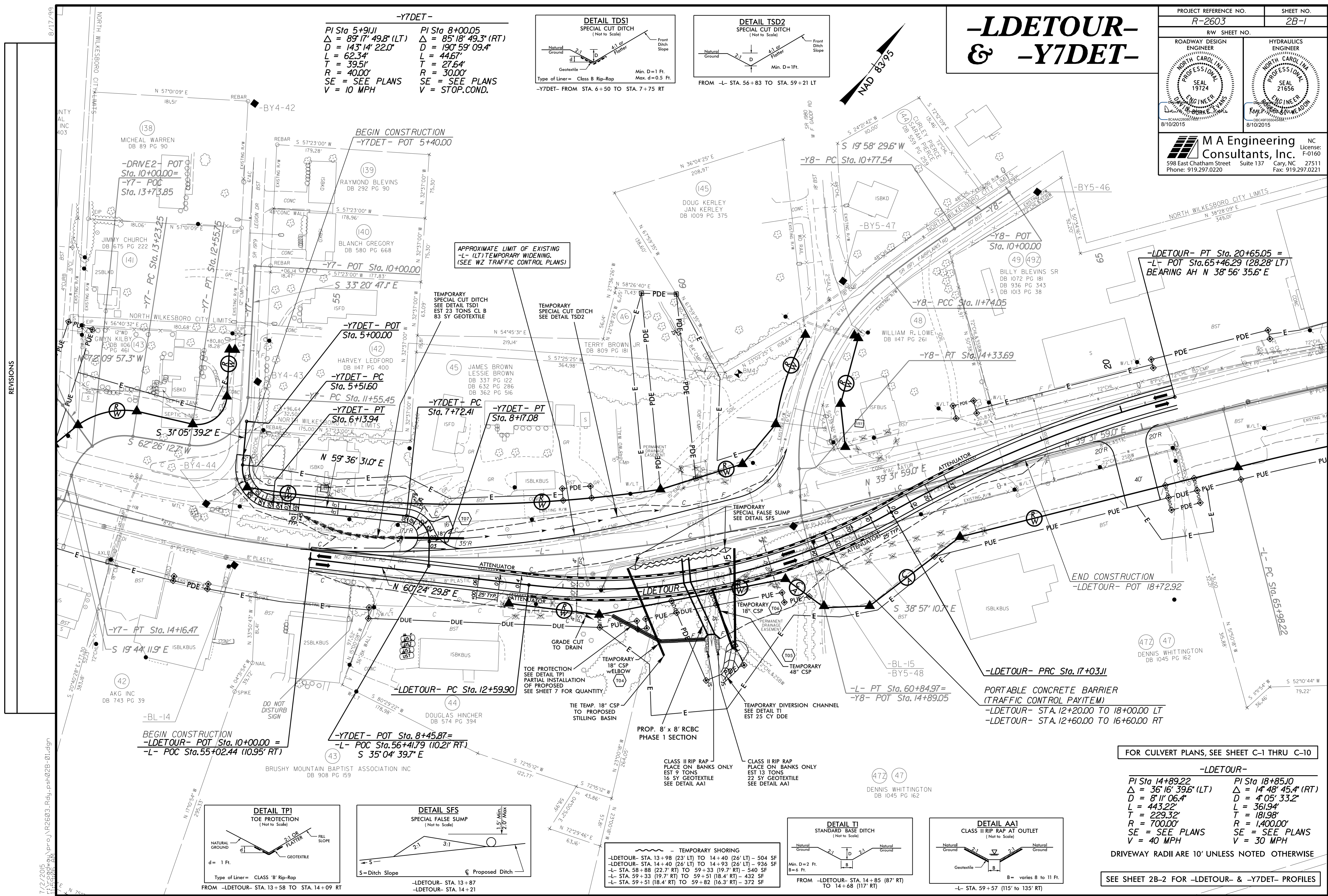
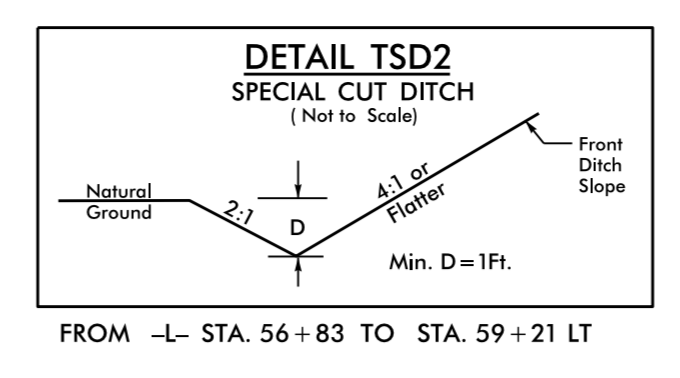
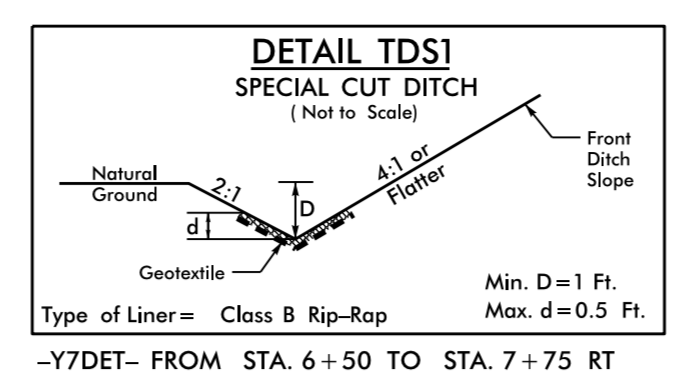


PROJECT REFERENCE NO. R-2603		SHEET NO. 2B-1	
RW SHEET NO.			
ROADWAY DESIGN ENGINEER DAVID B. BURK PROFESSIONAL SEAL 19724 8/10/2015		HYDRAULICS ENGINEER RAYMOND B. WEAVER PROFESSIONAL SEAL 21656 8/10/2015	
M A Engineering Consultants, Inc. 598 East Chatham Street Suite 137 Cary, NC 27511 Phone: 919.297.0220 Fax: 919.297.0221			

-LDETOUR- & -Y7DET-

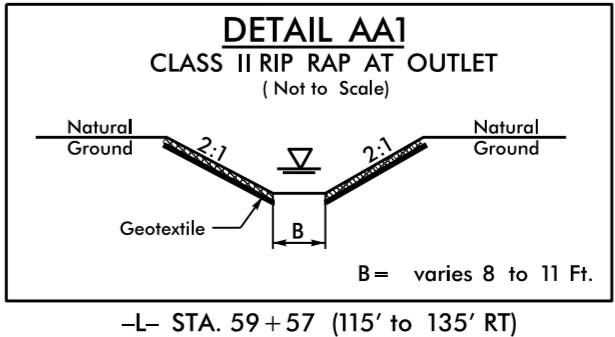
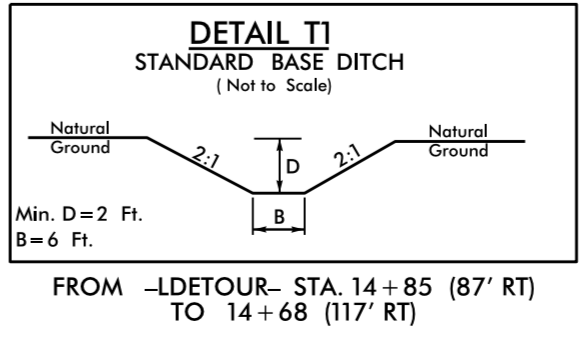
-Y7DET-

PI Sta 5+91.11 Δ = 89° 17' 49.8" (LT) D = 143' 14" 22.0" L = 62.34' T = 39.51' R = 40.00' SE = SEE PLANS V = 10 MPH	PI Sta 8+00.05 Δ = 85° 18' 49.3" (RT) D = 190' 59" 09.4" L = 44.67' T = 27.64' R = 30.00' SE = SEE PLANS V = STOP.COND.
--	--



TEMPORARY SHORING

-LDETOUR- STA. 13+98 (23' LT) TO 14+40 (26' LT) - 504 SF
 -LDETOUR- STA. 14+40 (26' LT) TO 14+93 (26' LT) - 936 SF
 -L STA. 58+88 (22.7' RT) TO 59+33 (19.7' RT) - 540 SF
 -L STA. 59+33 (19.7' RT) TO 59+51 (18.4' RT) - 432 SF
 -L STA. 59+51 (18.4' RT) TO 59+82 (16.3' RT) - 372 SF



REVISIONS

7/2/2015 pr-oj\p2603_Roadway\sh02B-01.dgn