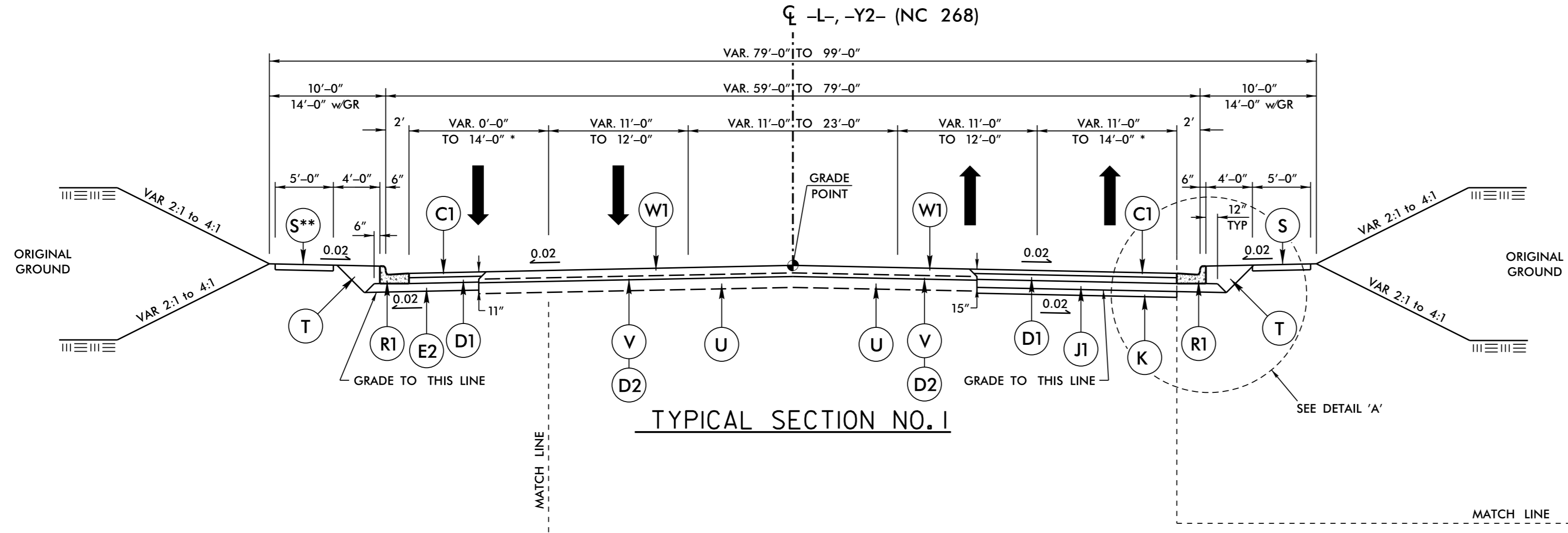


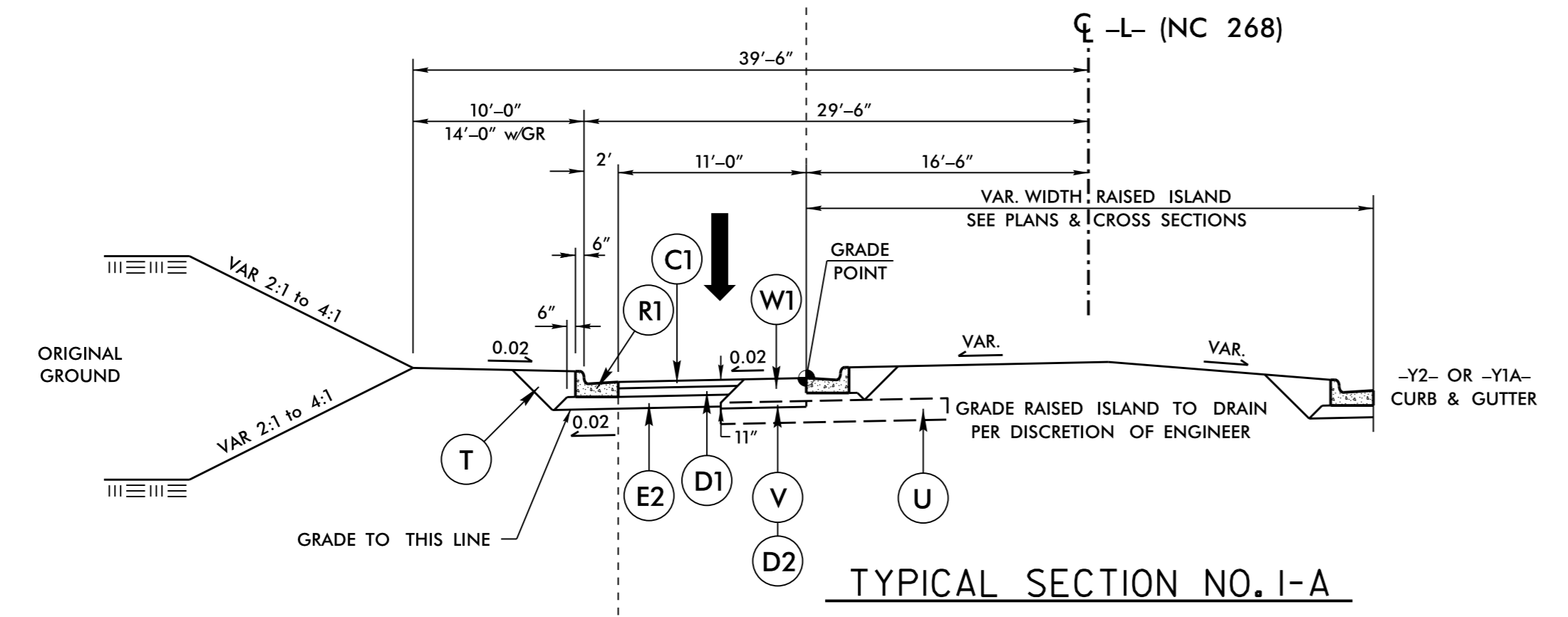
5/14/1999

PROJECT REFERENCE NO. R-2603	SHEET NO. 2A-2
ROADWAY DESIGN ENGINEER DAVID B. BURKE, P.E. SEAL 19724 8/10/2015	PAVEMENT DESIGN ENGINEER MARK W. MITCHELL, P.E. SEAL 031484 8/3/2015
NC License: F-0160 598 East Chatham Street Suite 137 Cary, NC 27511 Phone: 919.297.0220 Fax: 919.297.0221	

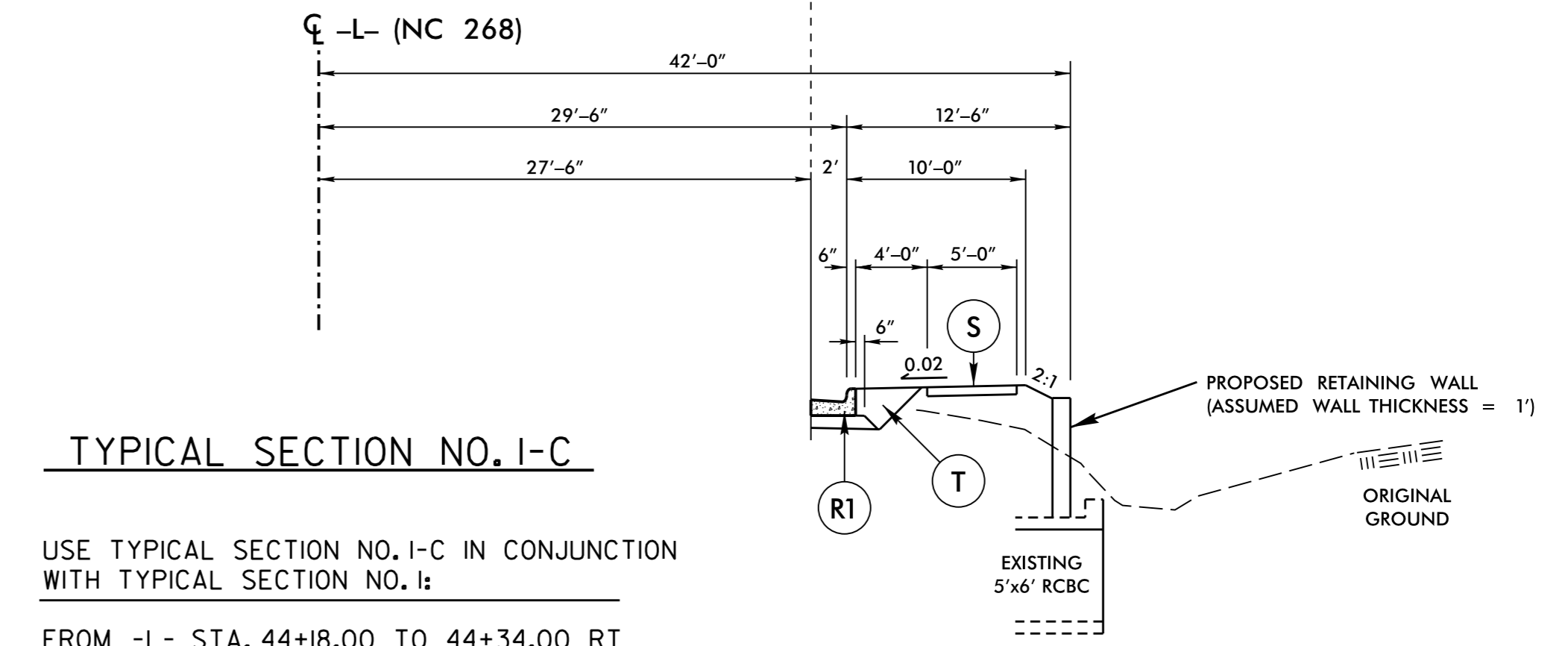


USE TYPICAL SECTION NO. I:
 FROM -L- STA. 10+38.67 TO 14+65.00
 FROM -L- STA. 25+00.00 TO 57+00.00
 FROM -Y2- STA. 14+65.00 TO 17+14.58

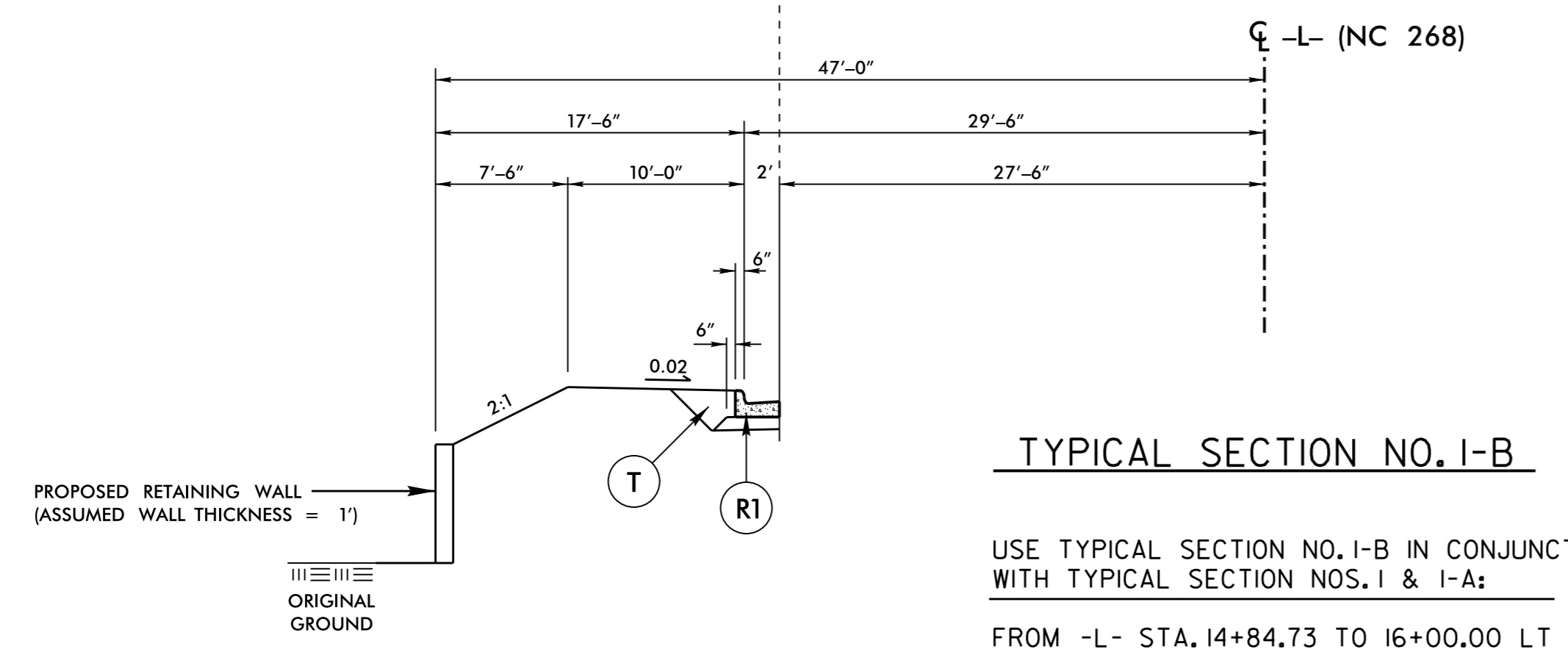
NOTE: USE 11" ALL ASPHALT PAVEMENT DESIGN FOR NARROW WIDENING AREAS LESS THAN 6' IN WIDTH.
 • 14' OUTSIDE LANES TO ACCOMMODATE BICYCLES
 •• SIDEWALK ON LEFT SIDE:
 FROM -L- STA. 48+16.36 TO 57+00.00



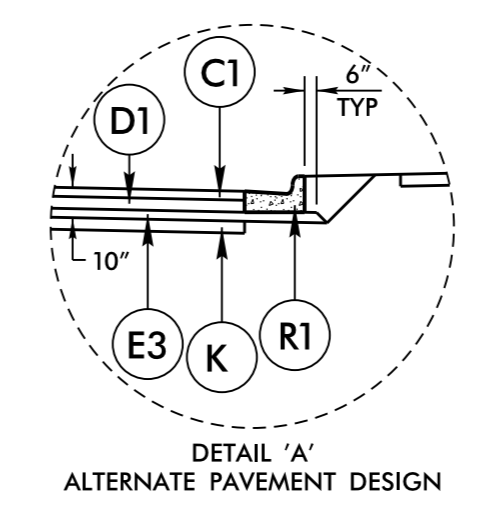
USE TYPICAL SECTION NO. I-A IN CONJUNCTION WITH TYPICAL SECTION I:
 FROM -L- STA. 15+02.33 TO 19+08.05
 NOTE: TIE -L- PAVEMENT TO -Y2- OR -Y1A- LEFT SIDE EDGE OF PAVEMENT OUTSIDE OF RAISED ISLAND LIMITS.



USE TYPICAL SECTION NO. I-C IN CONJUNCTION WITH TYPICAL SECTION NO. I:
 FROM -L- STA. 44+18.00 TO 44+34.00 RT



USE TYPICAL SECTION NO. I-B IN CONJUNCTION WITH TYPICAL SECTION NOS. I & I-A:
 FROM -L- STA. 14+84.73 TO 16+00.00 LT



NOTE: ONLY MILL AND REPLACE EXISTING PAVEMENT WITH 2.5" OF I19.0C IN LOCATIONS TO BE USED FOR PROPOSED PAVEMENT.

PAVEMENT SCHEDULE (FINAL PAVEMENT DESIGN)	
C1	3" S9.5C
C2	VAR. S9.5C
C3	3" S9.5B
C4	VAR. S9.5B
D1	4" I19.0C
D2	2.5" I19.0C
D3	VAR. I19.0C
D4	4" I19.0B
D5	VAR. I19.0B
E1	5" B25.0C
E2	4" B25.0C
E3	3" B25.0C
E4	VAR. B25.0C
E5	4" B25.0B
E6	VAR. B25.0B
J1	8" ABC
K	LIME OR CEMENT SUBGRADE STABILIZ.
L	STABILIZER AGGREGATE
N	GEOTEXTILE FOR PAVEMENT STABILIZ.
P	.35 PRIME COAT
R1	2'-6" C & G
R2	1'-6" C & G
R3	2'-9" C & G
R4	5" MONO. CONC. ISLAND (KEYED IN)
S	4" SIDEWALK
T	EARTH MATERIAL
U	EXIST. PAVEMENT
V	MILLING, 2.5"
W1	WEDGING
W2	WEDGING
W3	WEDGING

PAVEMENT EDGE SLOPES 1:1 UNLESS NOTED OTHERWISE

7/2/2015
 r:\112008001\p\proj\2603\rdy\typ.dgn