

**This electronic collection of documents is provided  
for the convenience of the user  
and is Not a Certified Document –**

**The documents contained herein were originally issued  
and sealed by the individuals whose names and license  
numbers appear on each page, on the dates appearing  
with their signature on that page.**

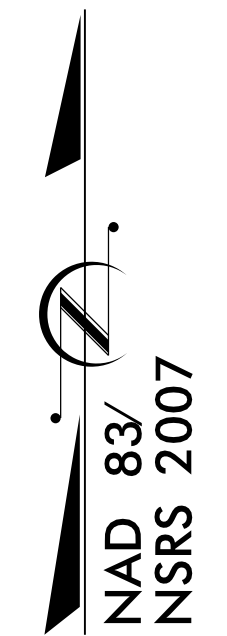
**This file or an individual page  
shall not be considered a certified document.**

STATE OF NORTH CAROLINA  
DIVISION OF HIGHWAYS

**UTILITIES BY OTHERS PLANS  
ROWAN COUNTY**

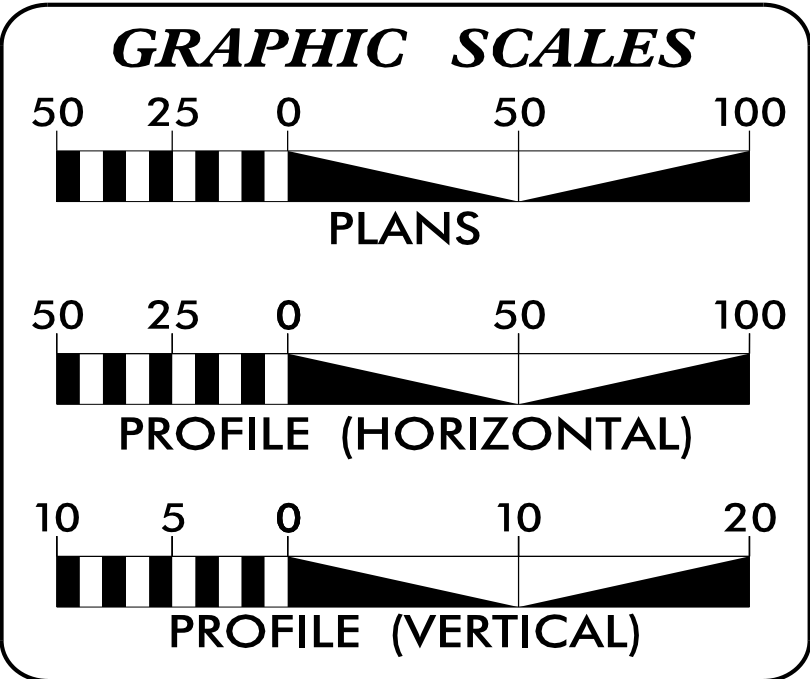
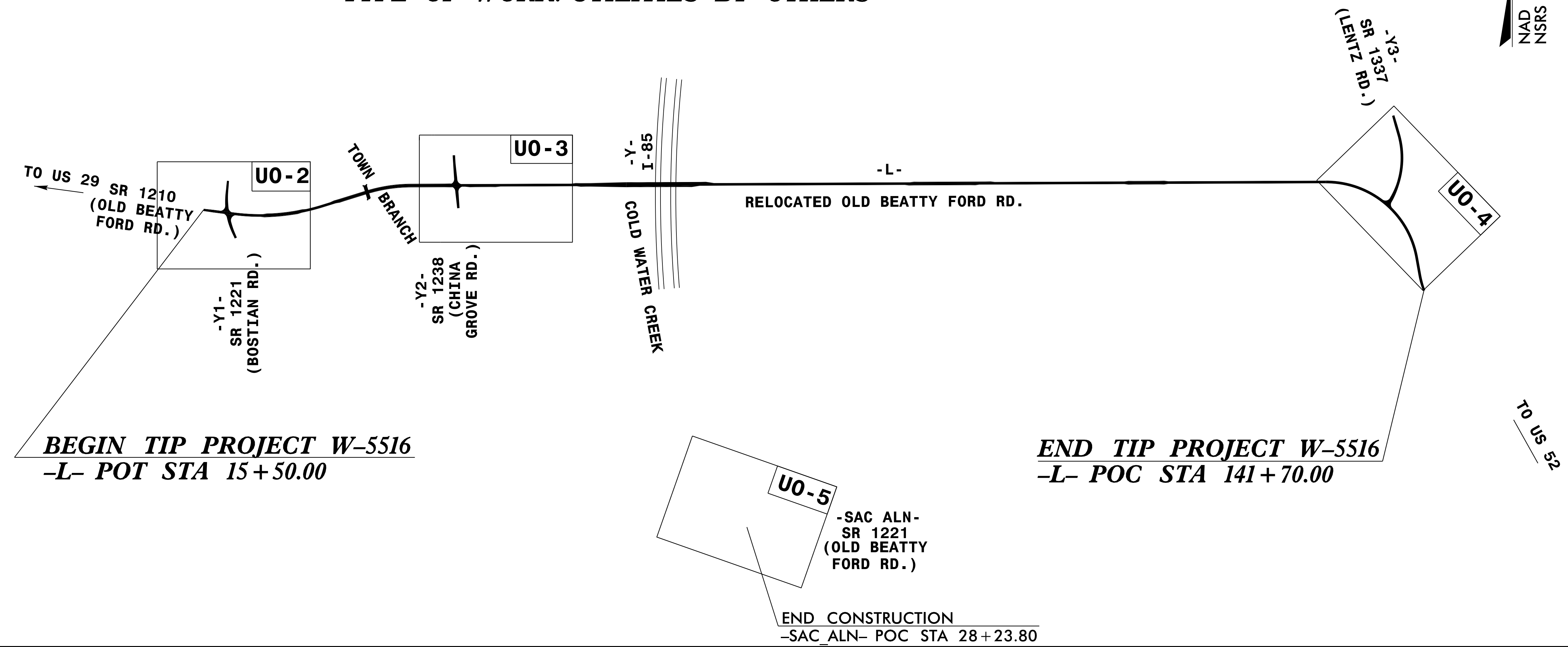
LOCATION: SR 1210 (OLD BEATTY FORD RD.) FROM WEST OF  
SR 1221 (BOSTIAN RD.) INTERSECTION TO SR 1337  
(LENTZ RD.)

TYPE OF WORK: UTILITIES BY OTHERS



TIP PROJECT: W-5516

CONTRACT: C203652

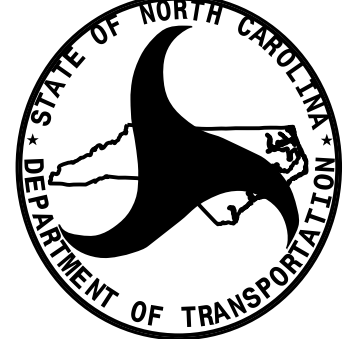


**INDEX OF SHEETS**

| SHEET NO.   | DESCRIPTION                   |
|-------------|-------------------------------|
| UO-1        | TITLE SHEET                   |
| UO-2 - UO-6 | UTILITY BY OTHERS PLAN SHEETS |

**UTILITY OWNERS ON PROJECT**

(A) POWER (DISTRIBUTION) - DUKE ENERGY  
(B) COMMUNICATIONS - WINDSTREAM  
(C) CABLE TELEVISION - TIME WARNER



PREPARED IN THE OFFICE OF:  
**DIVISION OF HIGHWAYS  
DIVISION 9**

375 SILAS CREEK PKWY  
WINSTON-SALEM, NC 27127  
PHONE (336) 747-7800  
FAX (336) 703-6693

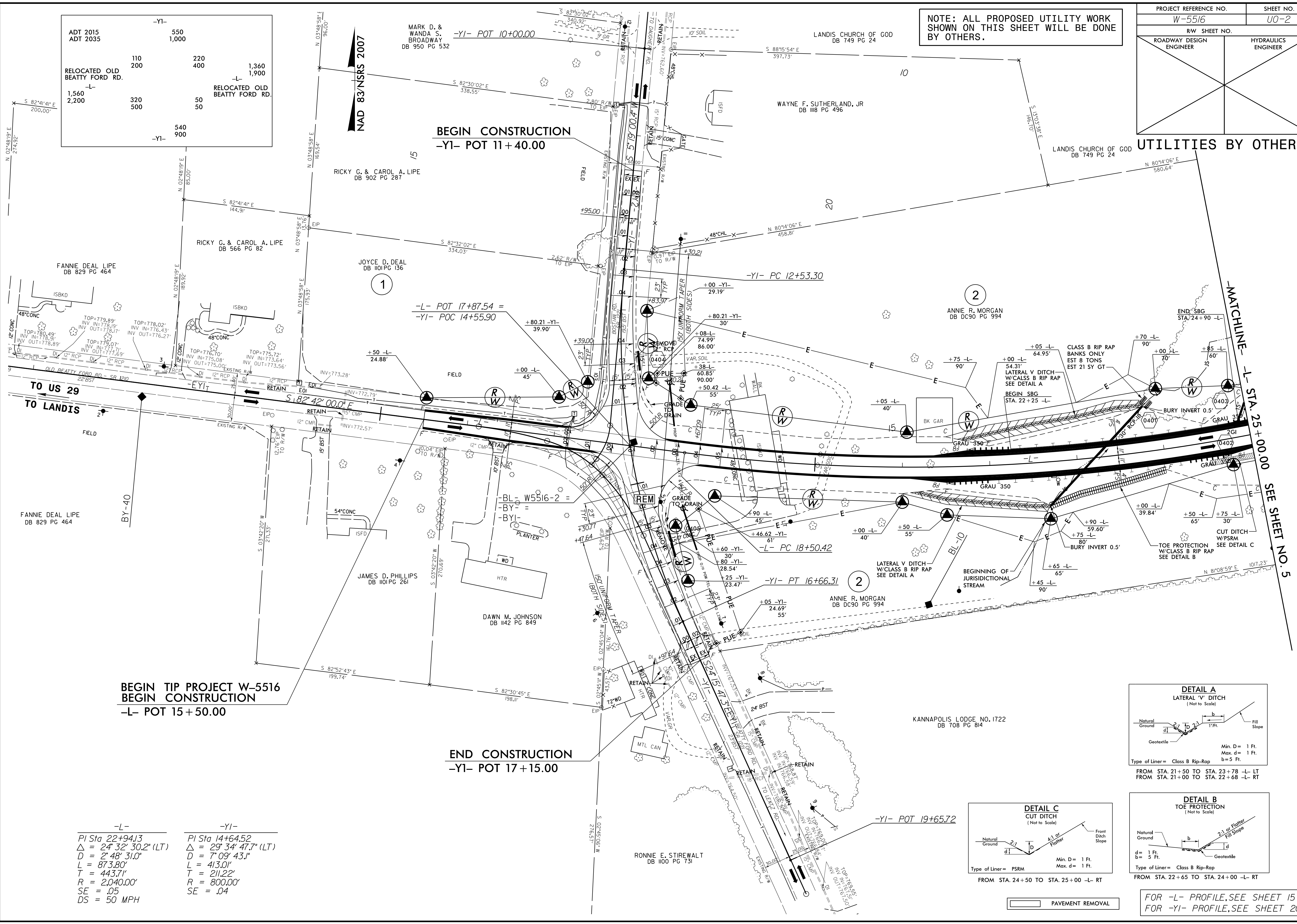
**J. BRETT ABERNATHY, PE, PLS** DIVISION PROJECT MANAGER  
**W. AL BLANTON, PE, PLS** DIVISION DESIGN ENGINEER  
**R. DAVID TRANTHAM** DIVISION UTILITY COORDINATOR

25-JUN-2015 15:11 S:\DDC\2013\_W5516-Old Beatty Ford Rd\Utilities\UB0\W5516-ddc\_uo-1.dgn \$\$\$\$USERNAME\$\$\$

|                         |                     |
|-------------------------|---------------------|
| PROJECT REFERENCE NO.   | SHEET NO.           |
| W-5516                  | UO-2                |
| RW SHEET NO.            |                     |
| ROADWAY DESIGN ENGINEER | HYDRAULICS ENGINEER |

NOTE: ALL PROPOSED UTILITY WORK SHOWN ON THIS SHEET WILL BE DONE BY OTHERS.

UTILITIES BY OTHERS

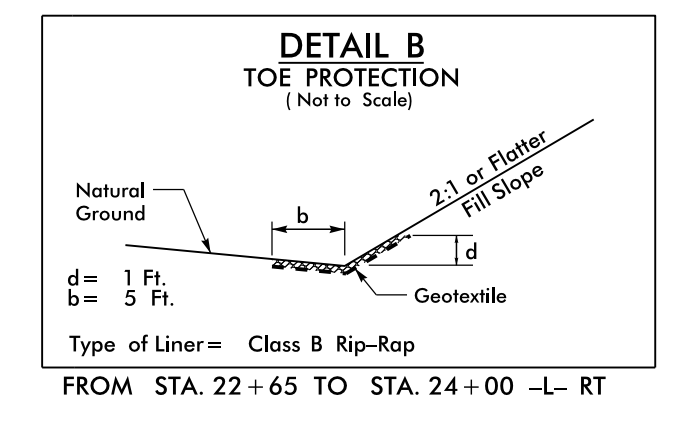
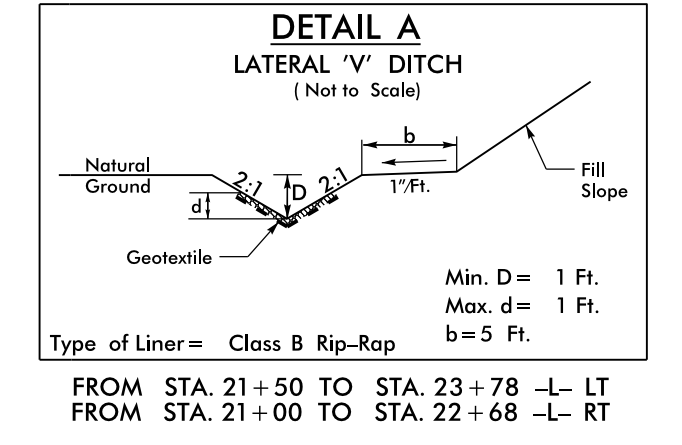
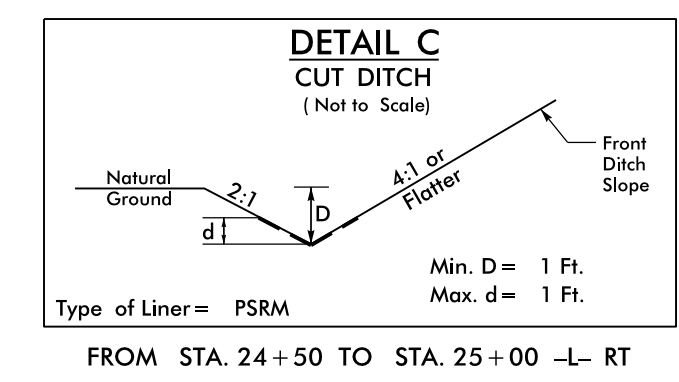


|                               |       |
|-------------------------------|-------|
| ADT 2015                      | 550   |
| ADT 2035                      | 1,000 |
| RELOCATED OLD BEATTY FORD RD. |       |
| 110                           | 220   |
| 200                           | 400   |
| 1,560                         | 1,360 |
| 2,200                         | 1,900 |
|                               | 540   |
|                               | 900   |

| -L-                            | -YI-                           |
|--------------------------------|--------------------------------|
| PI Sta 22+94.13                | PI Sta 14+64.52                |
| $\Delta = 24' 32' 30.2''$ (LT) | $\Delta = 29' 34' 47.7''$ (LT) |
| $D = 2' 48' 31.0''$            | $D = 7' 09' 43.1''$            |
| $L = 873.80'$                  | $L = 413.01'$                  |
| $T = 443.71'$                  | $T = 211.22'$                  |
| $R = 2,040.00'$                | $R = 800.00'$                  |
| $SE = .05$                     | $SE = .04$                     |
| $DS = 50$ MPH                  |                                |

BEGIN TIP PROJECT W-5516  
BEGIN CONSTRUCTION  
-L- POT 15+50.00

END CONSTRUCTION  
-YI- POT 17+15.00



PAVEMENT REMOVAL

FOR -L- PROFILE, SEE SHEET 15  
FOR -YI- PROFILE, SEE SHEET 20

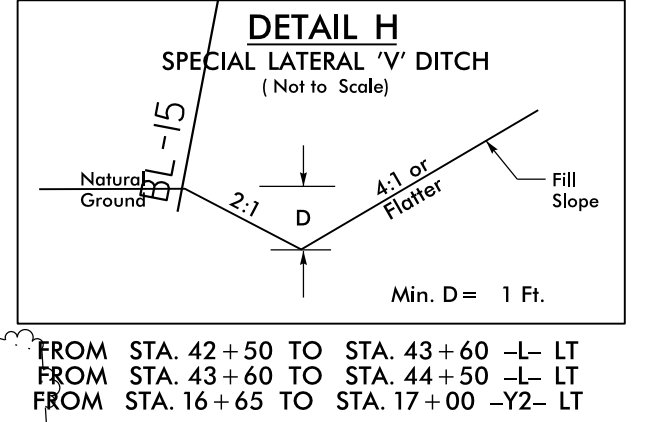
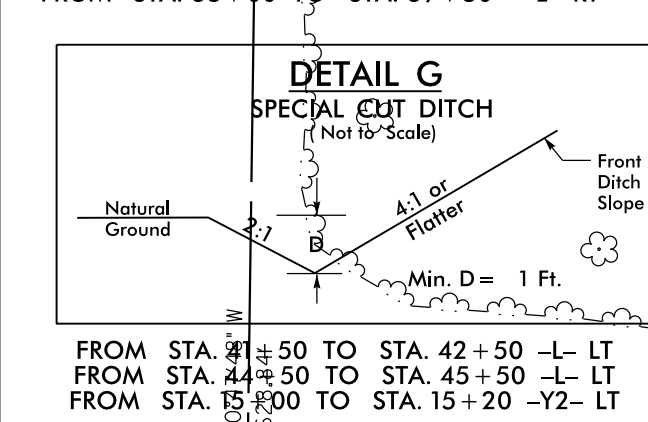
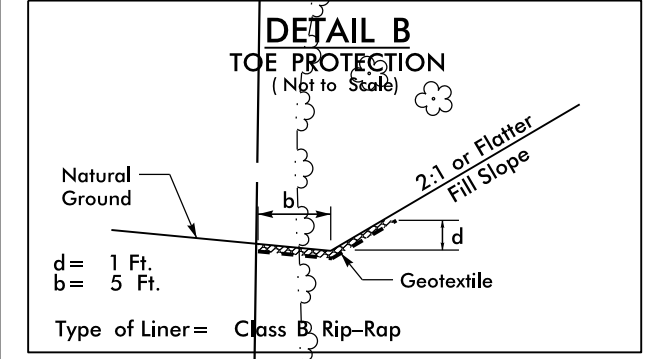
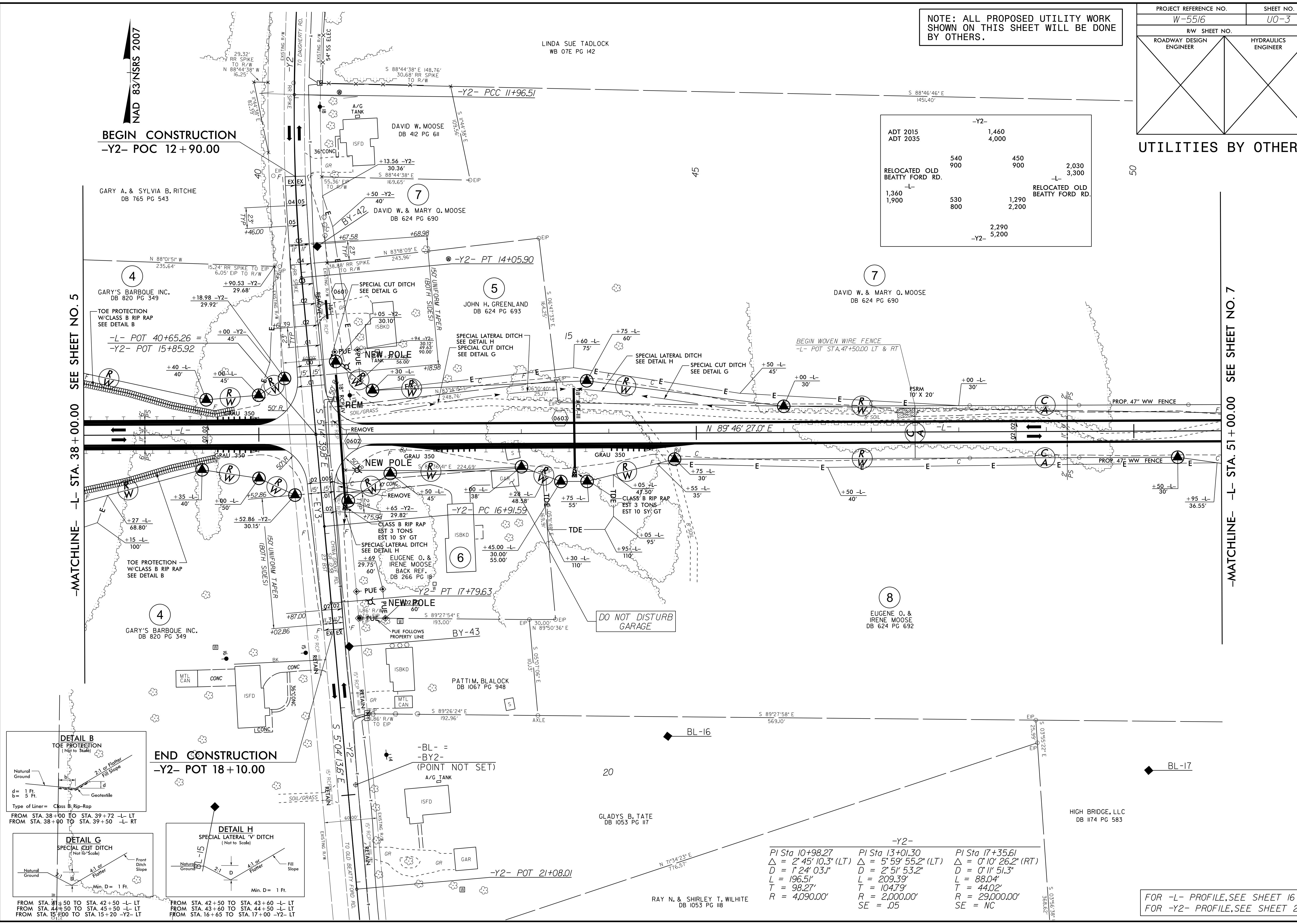
5/14/1999  
 3:\w5516\_06\_JUL-2015\_1011\_RdUtilities\UBD\w5516\_ddc\_uo-2.dgn  
 3:\w5516\_06\_JUL-2015\_1011\_RdUtilities\UBD\w5516\_ddc\_uo-2.dgn



NOTE: ALL PROPOSED UTILITY WORK SHOWN ON THIS SHEET WILL BE DONE BY OTHERS.

UTILITIES BY OTHERS

|                               |       |     |       |
|-------------------------------|-------|-----|-------|
| ADT 2015                      | 1,460 |     |       |
| ADT 2035                      | 4,000 |     |       |
| RELOCATED OLD BEATTY FORD RD. | 540   | 450 | 2,030 |
|                               | 900   | 900 | 3,300 |
|                               |       |     |       |
|                               | 1,360 |     |       |
|                               | 1,900 | 530 | 1,290 |
|                               |       | 800 | 2,200 |
|                               |       |     |       |
|                               |       |     | 2,290 |
|                               |       |     | 5,200 |



|                                    |                                    |                                    |
|------------------------------------|------------------------------------|------------------------------------|
| PI Sta 10+98.27                    | PI Sta 13+01.30                    | PI Sta 17+35.61                    |
| $\Delta = 2^{\circ}45'10.3''$ (LT) | $\Delta = 5^{\circ}59'55.2''$ (LT) | $\Delta = 0^{\circ}10'26.2''$ (RT) |
| D = 124.031'                       | D = 251.532'                       | D = 011.513'                       |
| L = 196.51'                        | L = 209.39'                        | L = 88.04'                         |
| T = 98.27'                         | T = 104.79'                        | T = 44.02'                         |
| R = 4,090.00'                      | R = 2,000.00'                      | R = 29,000.00'                     |
|                                    | SE = .05                           | SE = NC                            |

FOR -L- PROFILE, SEE SHEET 16  
FOR -Y2- PROFILE, SEE SHEET 21

-MATCHLINE- -L- STA. 38+00.00 SEE SHEET NO. 5

-MATCHLINE- -L- STA. 51+00.00 SEE SHEET NO. 7

BEGIN CONSTRUCTION  
-Y2- POC 12+90.00

END CONSTRUCTION  
-Y2- POT 18+10.00

5/14/99

NAD 83 NSRS 2007

LINDA SUE TADLOCK  
WB 07E PG 142

3-W5516-06-JUL-2015 10:21 RdUtilities\UBD\w5516-ddc-uo-3.dgn

|                         |                     |
|-------------------------|---------------------|
| PROJECT REFERENCE NO.   | SHEET NO.           |
| W-5516                  | U0-4                |
| RW SHEET NO.            |                     |
| ROADWAY DESIGN ENGINEER | HYDRAULICS ENGINEER |

NOTE: ALL PROPOSED UTILITY WORK SHOWN ON THIS SHEET WILL BE DONE BY OTHERS.

UTILITIES BY OTHERS

$L = 1,257.79'$   
 $T = 756.17'$   
 $R = 900.00'$   
 $SE = .08$   
 $DS = 50$  MPH

$L = 139.59'$   
 $T = 69.80'$   
 $R = 22,918.31'$

$L = 728.33'$   
 $T = 389.29'$   
 $R = 833.00'$   
 $SE = .06$

$PI$  Sta 10+92.82  
 $\Delta = 69^\circ 57' 24.0"$  (RT)  
 $D = 57^\circ 17' 44.8"$   
 $L = 122.10'$   
 $T = 69.96'$   
 $R = 100.00'$

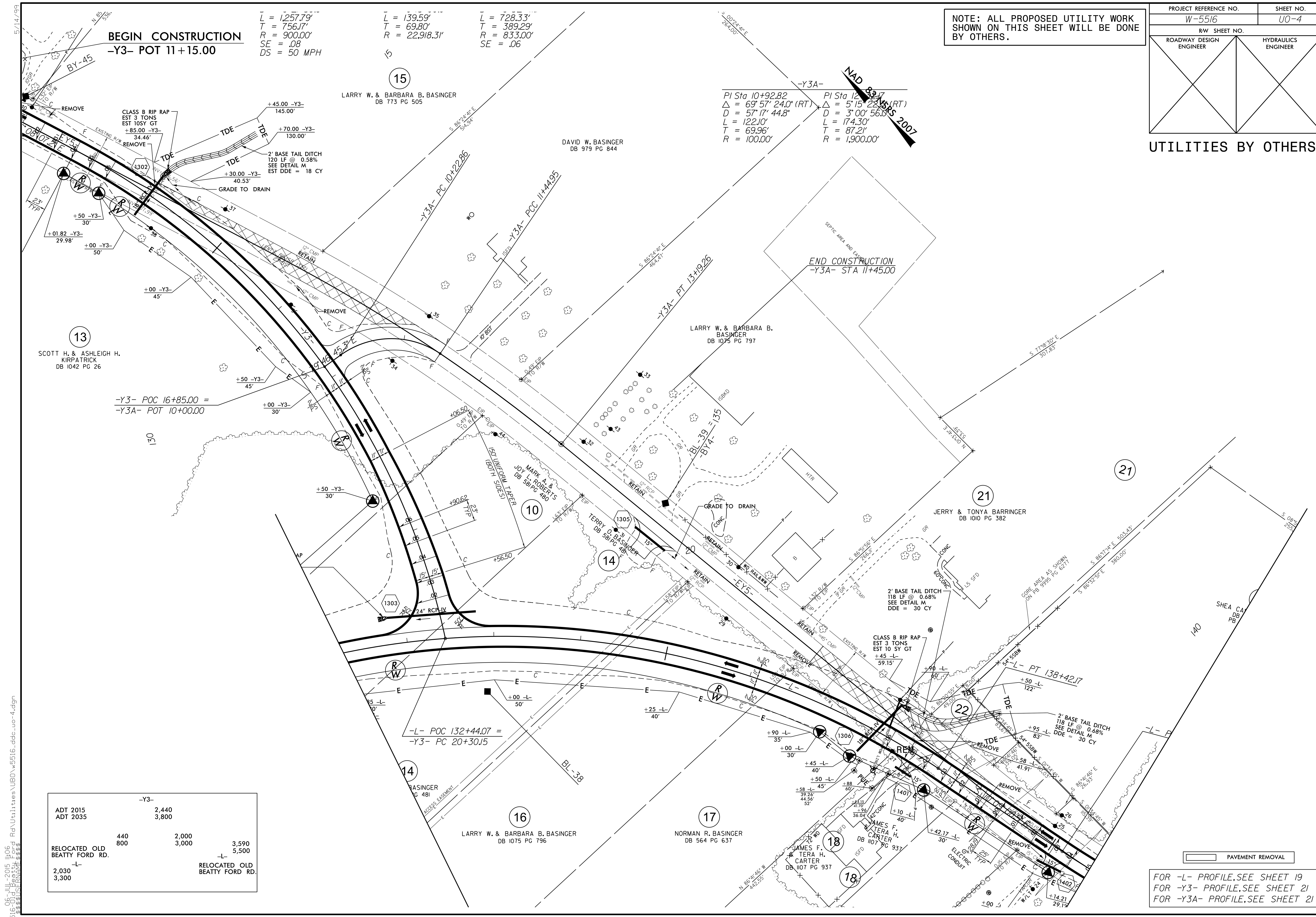
$PI$  Sta 12+39.17  
 $\Delta = 5^\circ 15' 22.33"$  (RT)  
 $D = 3^\circ 00' 56.00"$   
 $L = 174.30'$   
 $T = 87.21'$   
 $R = 1,900.00'$

**BEGIN CONSTRUCTION**  
-Y3- POT 11+15.00

**END CONSTRUCTION**  
-Y3A- STA 11+45.00

|                               |                               |
|-------------------------------|-------------------------------|
| -Y3-                          |                               |
| ADT 2015                      | 2,440                         |
| ADT 2035                      | 3,800                         |
| RELOCATED OLD BEATTY FORD RD. | 440<br>800                    |
|                               | 2,000<br>3,000                |
|                               | 3,590<br>5,500                |
| 2,030<br>3,300                | -L-                           |
|                               | RELOCATED OLD BEATTY FORD RD. |

FOR -L- PROFILE, SEE SHEET 19  
 FOR -Y3- PROFILE, SEE SHEET 21  
 FOR -Y3A- PROFILE, SEE SHEET 21



3.W5516.06-Jul-2015 10:06 RdUtilities\UBD\W5516.ddc.uo-4.dgn



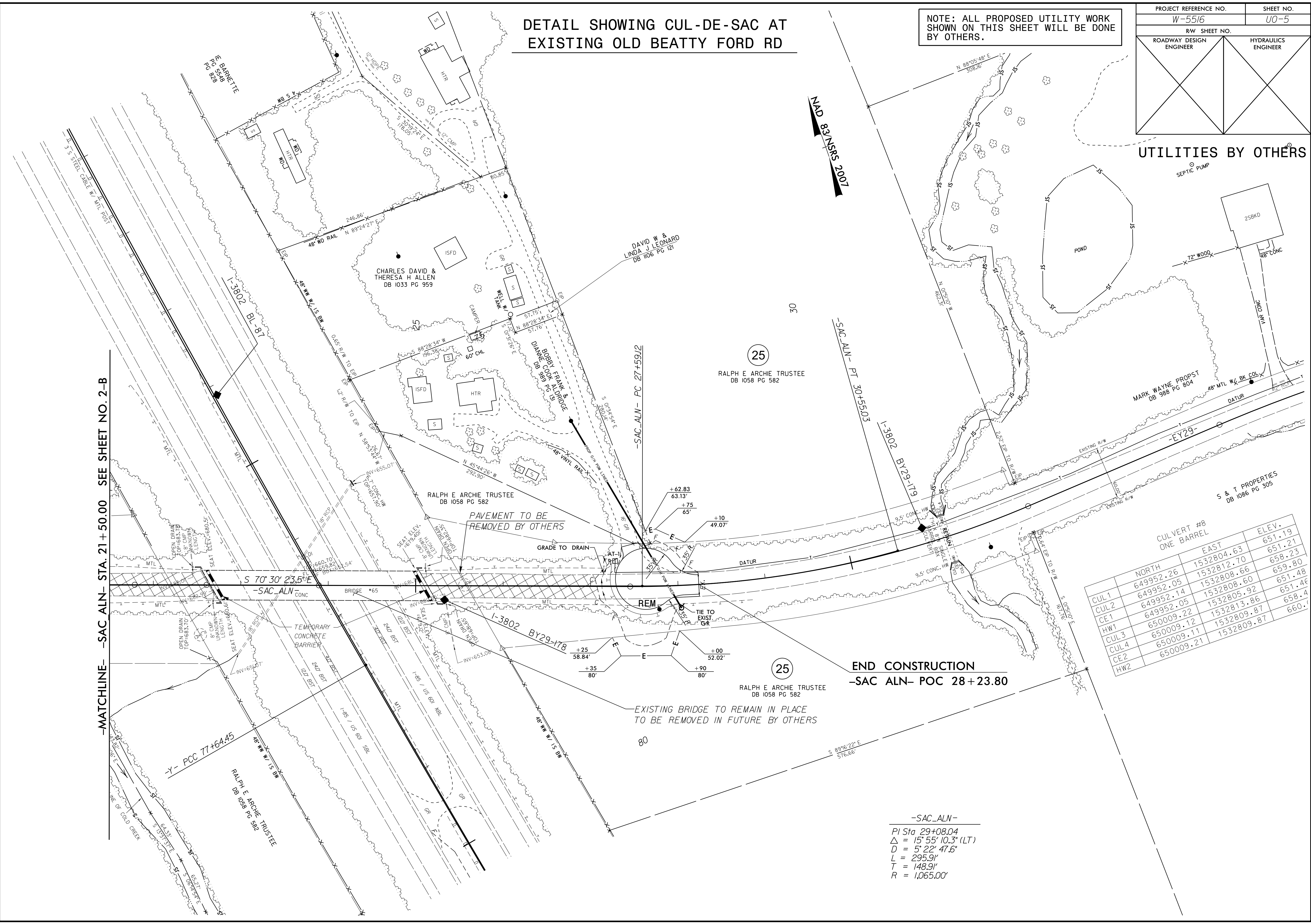
5/14/99

# DETAIL SHOWING CUL-DE-SAC AT EXISTING OLD BEATTY FORD RD

NOTE: ALL PROPOSED UTILITY WORK SHOWN ON THIS SHEET WILL BE DONE BY OTHERS.

|                                 |                     |
|---------------------------------|---------------------|
| PROJECT REFERENCE NO.<br>W-5516 | SHEET NO.<br>UO-5   |
| RW SHEET NO.                    |                     |
| ROADWAY DESIGN ENGINEER         | HYDRAULICS ENGINEER |

## UTILITIES BY OTHERS



-MATCHLINE- -SAC ALN- STA. 21+50.00 SEE SHEET NO. 2-B

NAD 83 NSRS 2007

| CULVERT #8 ONE BARREL | CULVERT #8 ONE BARREL |            | ELEV.  |
|-----------------------|-----------------------|------------|--------|
|                       | NORTH                 | EAST       |        |
| CUL1                  | 649952.26             | 1532804.63 | 651.19 |
| CUL2                  | 649952.05             | 1532812.70 | 651.21 |
| CE1                   | 649952.14             | 1532808.66 | 658.23 |
| CUL3                  | 649952.05             | 1532805.92 | 659.80 |
| HW1                   | 650009.22             | 1532813.86 | 651.48 |
| CUL4                  | 650009.12             | 1532809.87 | 658.4  |
| CE2                   | 650009.11             | 1532809.87 | 660.4  |
| HW2                   | 650009.21             | 1532809.87 | 660.4  |

END CONSTRUCTION -SAC ALN- POC 28+23.80

-SAC\_ALN-  
 PI Sta 29+08.04  
 $\Delta = 15^\circ 55' 10.3" (LT)$   
 $D = 5^\circ 22' 47.6"$   
 $L = 295.9'$   
 $T = 148.9'$   
 $R = 1,065.00'$

3..w5516.05-jul-2015 11:08 Rd\Utilities\UBD\w5516\_ddc.uo-5.dgn