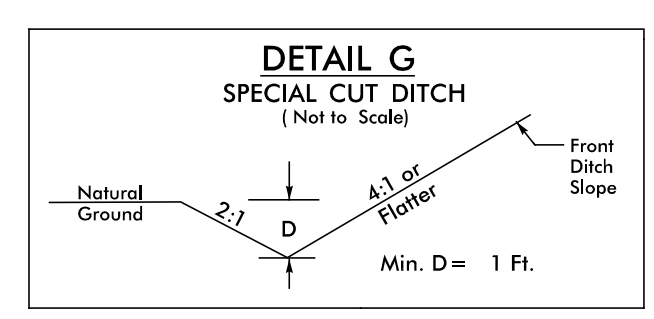
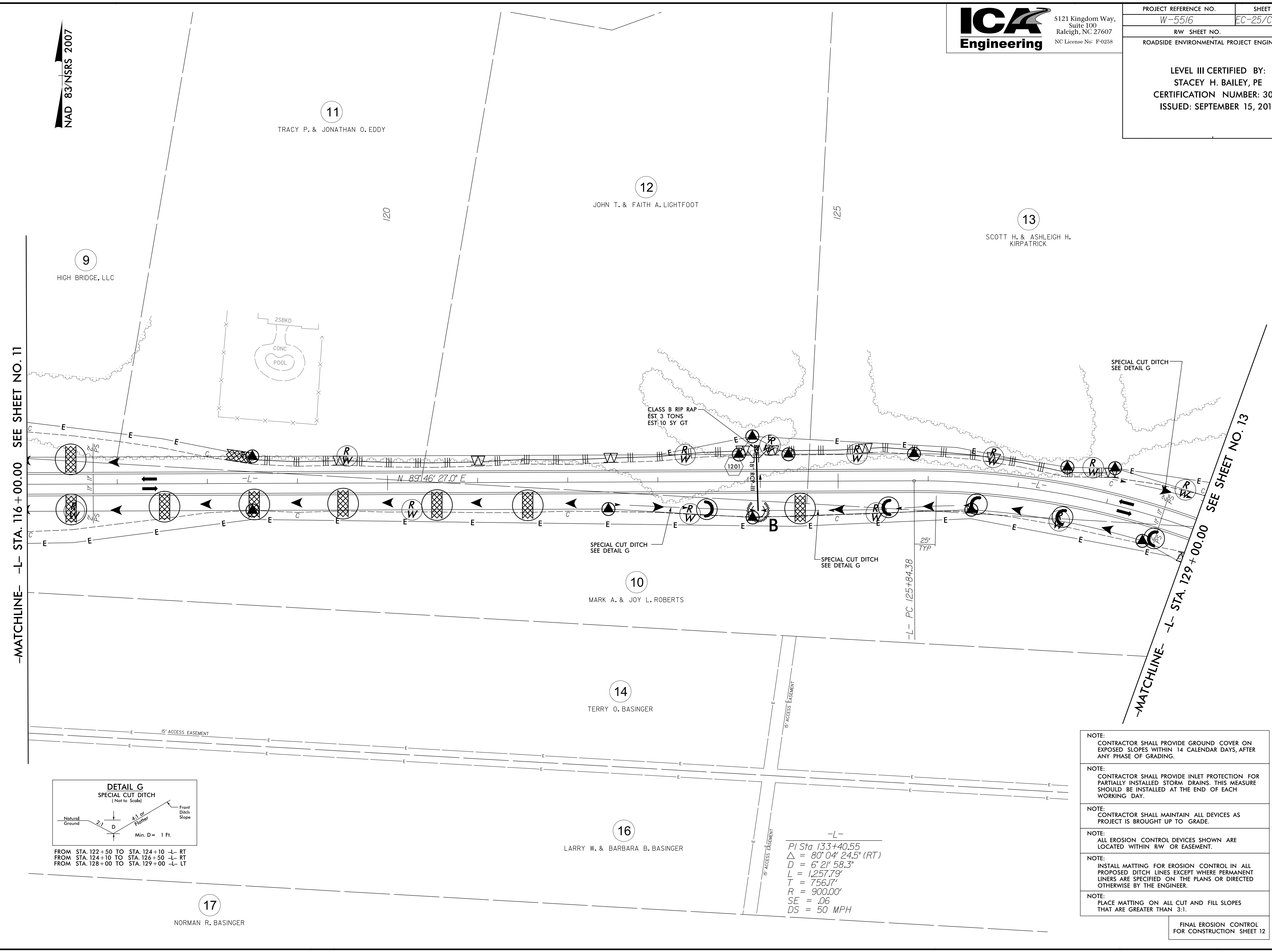


5/14/99
9/10/2014
C:\Users\jca\Documents\Road\5516_hyd_erosion_final_psh_12.dgn
JCA ENGINEERING, INC.

PROJECT REFERENCE NO.	SHEET NO.
W-5516	EC-25/CONST.12
RW SHEET NO.	
ROADSIDE ENVIRONMENTAL PROJECT ENGINEER	
LEVEL III CERTIFIED BY: STACEY H. BAILEY, PE CERTIFICATION NUMBER: 3074 ISSUED: SEPTEMBER 15, 2014	



FROM STA. 122+50 TO STA. 124+10 -L- RT
FROM STA. 124+10 TO STA. 126+50 -L- RT
FROM STA. 128+00 TO STA. 129+00 -L- LT

17
NORMAN R. BASINGER

-L-
PI Sta 133+40.55
 $\Delta = 80^{\circ} 04' 24.5''$ (RT)
D = 6' 21" 58.3"
L = 1,257.79'
T = 756.17'
R = 900.00'
SE = .06
DS = 50 MPH

- NOTE:
CONTRACTOR SHALL PROVIDE GROUND COVER ON EXPOSED SLOPES WITHIN 14 CALENDAR DAYS, AFTER ANY PHASE OF GRADING.
- NOTE:
CONTRACTOR SHALL PROVIDE INLET PROTECTION FOR PARTIALLY INSTALLED STORM DRAINS. THIS MEASURE SHOULD BE INSTALLED AT THE END OF EACH WORKING DAY.
- NOTE:
CONTRACTOR SHALL MAINTAIN ALL DEVICES AS PROJECT IS BROUGHT UP TO GRADE.
- NOTE:
ALL EROSION CONTROL DEVICES SHOWN ARE LOCATED WITHIN RW OR EASEMENT.
- NOTE:
INSTALL MATTING FOR EROSION CONTROL IN ALL PROPOSED DITCH LINES EXCEPT WHERE PERMANENT LINERS ARE SPECIFIED ON THE PLANS OR DIRECTED OTHERWISE BY THE ENGINEER.
- NOTE:
PLACE MATTING ON ALL CUT AND FILL SLOPES THAT ARE GREATER THAN 3:1.

FINAL EROSION CONTROL FOR CONSTRUCTION SHEET 12