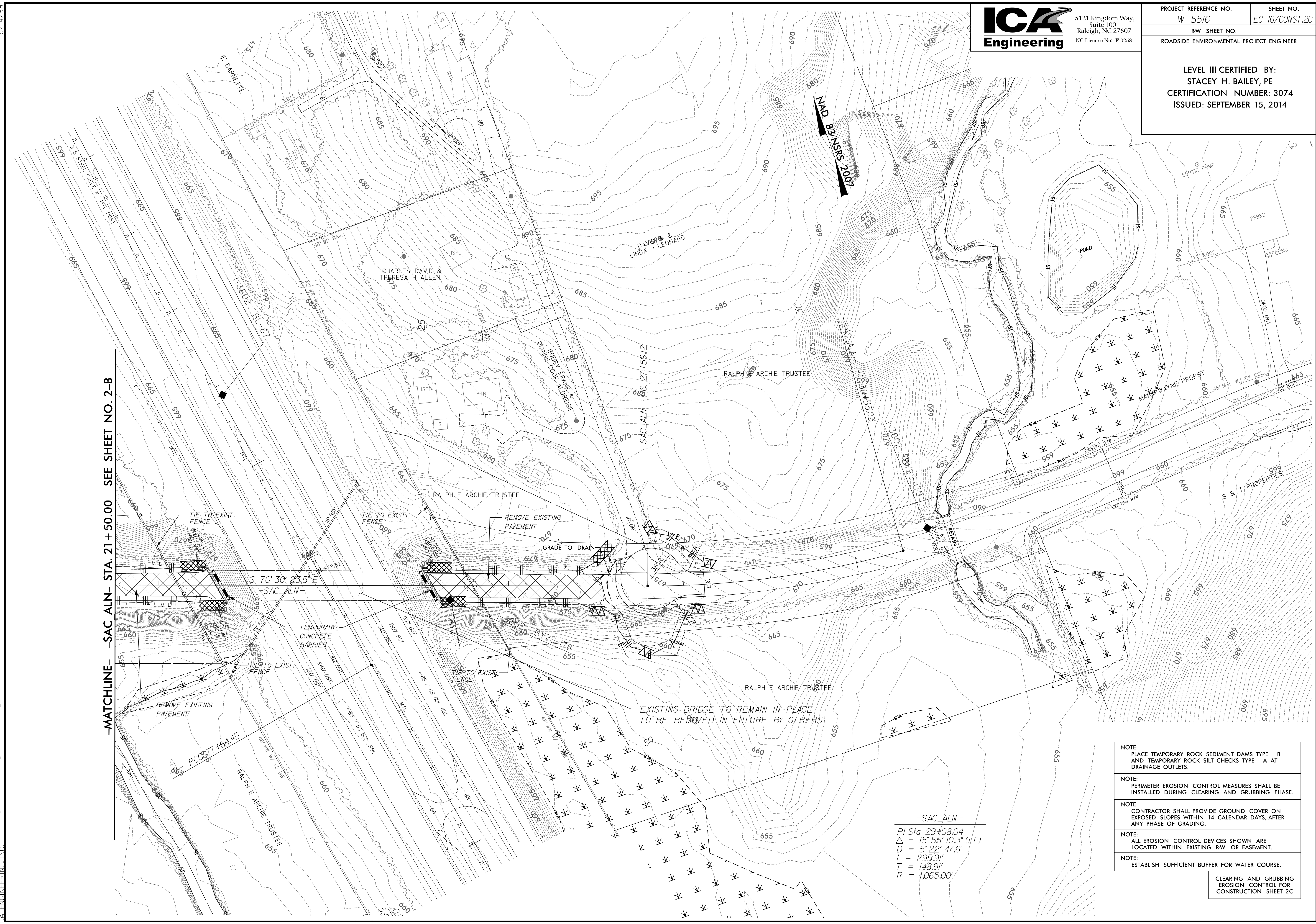


5/14/99



5121 Kingdom Way,
Suite 100
Raleigh, NC 27607
NC License No: F-0258

PROJECT REFERENCE NO.	SHEET NO.
W-5516	EC-16/CONST.2C
RW SHEET NO.	
ROADSIDE ENVIRONMENTAL PROJECT ENGINEER	
LEVEL III CERTIFIED BY: STACEY H. BAILEY, PE CERTIFICATION NUMBER: 3074 ISSUED: SEPTEMBER 15, 2014	



-MATCHLINE- -SAC ALN- STA. 21+50.00 SEE SHEET NO. 2-B

S 70° 30' 23.5" E
-SAC ALN-

-SAC ALN-

PI Sta 29+08.04
$\Delta = 15^{\circ} 55' 10.3"$ (LT)
$D = 5^{\circ} 22' 47.6"$
$L = 295.9'$
$T = 148.9'$
$R = 1,065.00'$

- NOTE:
PLACE TEMPORARY ROCK SEDIMENT DAMS TYPE - B AND TEMPORARY ROCK SILT CHECKS TYPE - A AT DRAINAGE OUTLETS.
- NOTE:
PERIMETER EROSION CONTROL MEASURES SHALL BE INSTALLED DURING CLEARING AND GRUBBING PHASE.
- NOTE:
CONTRACTOR SHALL PROVIDE GROUND COVER ON EXPOSED SLOPES WITHIN 14 CALENDAR DAYS, AFTER ANY PHASE OF GRADING.
- NOTE:
ALL EROSION CONTROL DEVICES SHOWN ARE LOCATED WITHIN EXISTING RW OR EASEMENT.
- NOTE:
ESTABLISH SUFFICIENT BUFFER FOR WATER COURSE.

CLEARING AND GRUBBING
EROSION CONTROL FOR
CONSTRUCTION SHEET 2C

8/10/2014 8:10:20 AM C:\Users\psh16\OneDrive\Engineering\5516\hyd_erosion_c&g_psh16_02C.dgn