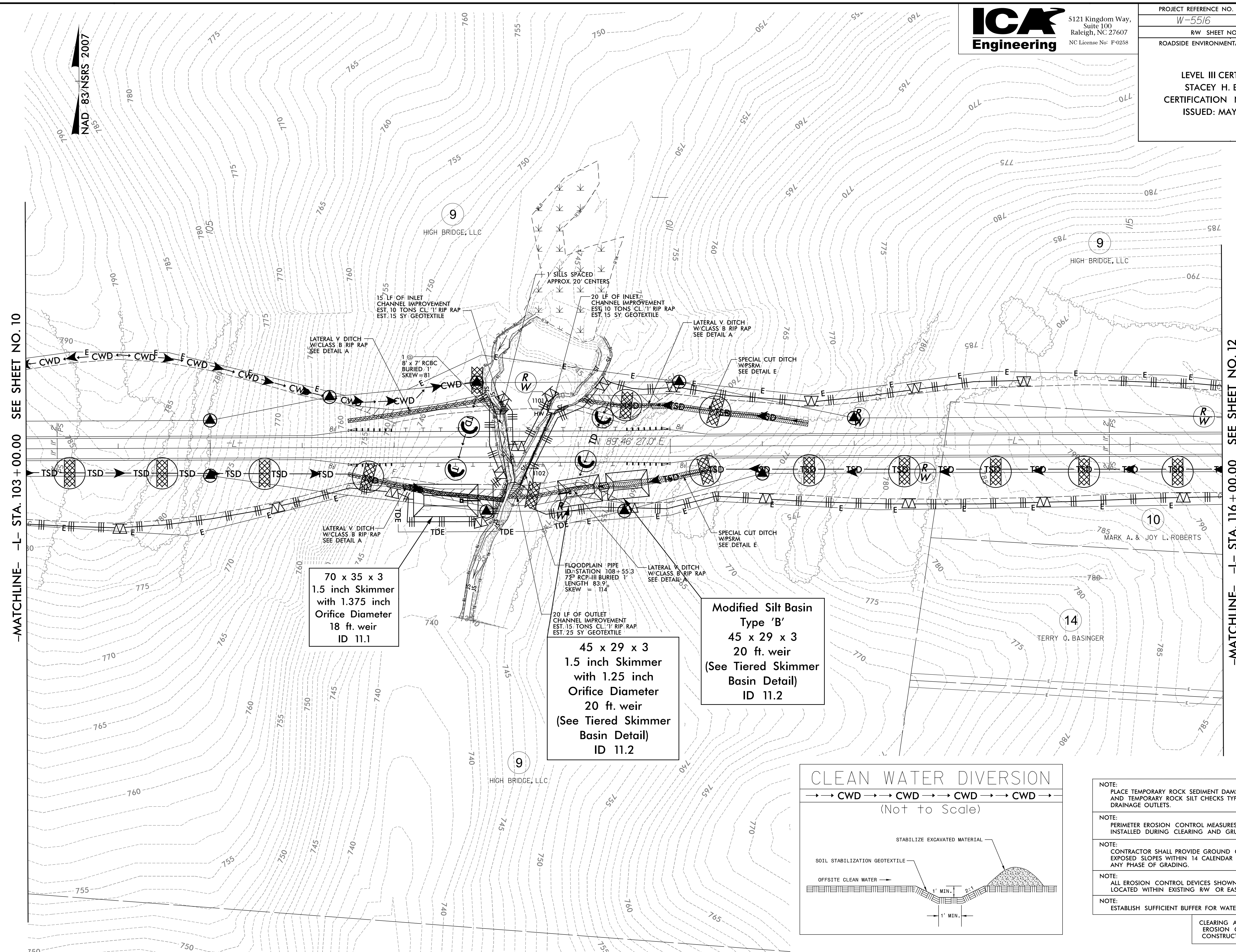


5/14/99

PROJECT REFERENCE NO.	SHEET NO.
W-5516	EC-II/CONST.II
RW SHEET NO.	
ROADSIDE ENVIRONMENTAL PROJECT ENGINEER	
LEVEL III CERTIFIED BY: STACEY H. BAILEY, PE CERTIFICATION NUMBER: 3074 ISSUED: MAY 26, 2015	



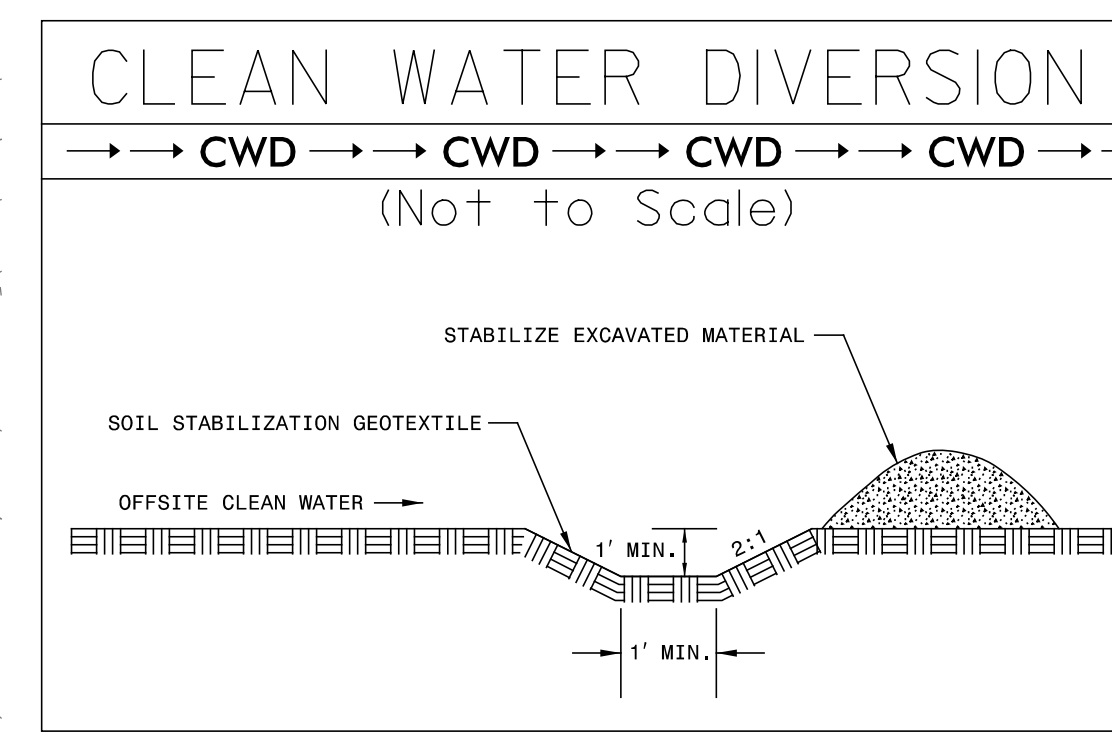
-MATCHLINE- L- STA. 103+00.00 SEE SHEET NO. 10

-MATCHLINE- L- STA. 116+00.00 SEE SHEET NO. 12

70 x 35 x 3  
 1.5 inch Skimmer  
 with 1.375 inch  
 Orifice Diameter  
 18 ft. weir  
 ID 11.1

45 x 29 x 3  
 1.5 inch Skimmer  
 with 1.25 inch  
 Orifice Diameter  
 20 ft. weir  
 (See Tiered Skimmer  
 Basin Detail)  
 ID 11.2

Modified Silt Basin  
 Type 'B'  
 45 x 29 x 3  
 20 ft. weir  
 (See Tiered Skimmer  
 Basin Detail)  
 ID 11.2



- NOTE: PLACE TEMPORARY ROCK SEDIMENT DAMS TYPE - B AND TEMPORARY ROCK SILT CHECKS TYPE - A AT DRAINAGE OUTLETS.
- NOTE: PERIMETER EROSION CONTROL MEASURES SHALL BE INSTALLED DURING CLEARING AND GRUBBING PHASE.
- NOTE: CONTRACTOR SHALL PROVIDE GROUND COVER ON EXPOSED SLOPES WITHIN 14 CALENDAR DAYS, AFTER ANY PHASE OF GRADING.
- NOTE: ALL EROSION CONTROL DEVICES SHOWN ARE LOCATED WITHIN EXISTING RW OR EASEMENT.
- NOTE: ESTABLISH SUFFICIENT BUFFER FOR WATER COURSE.

CLEARING AND GRUBBING  
 EROSION CONTROL FOR  
 CONSTRUCTION SHEET 11

6/1/2015  
 C:\Users\pca\OneDrive\Documents\5516\_hyd\_erosion\_c&g\_psh.11.dgn  
 ICA ENGINEERING, INC.