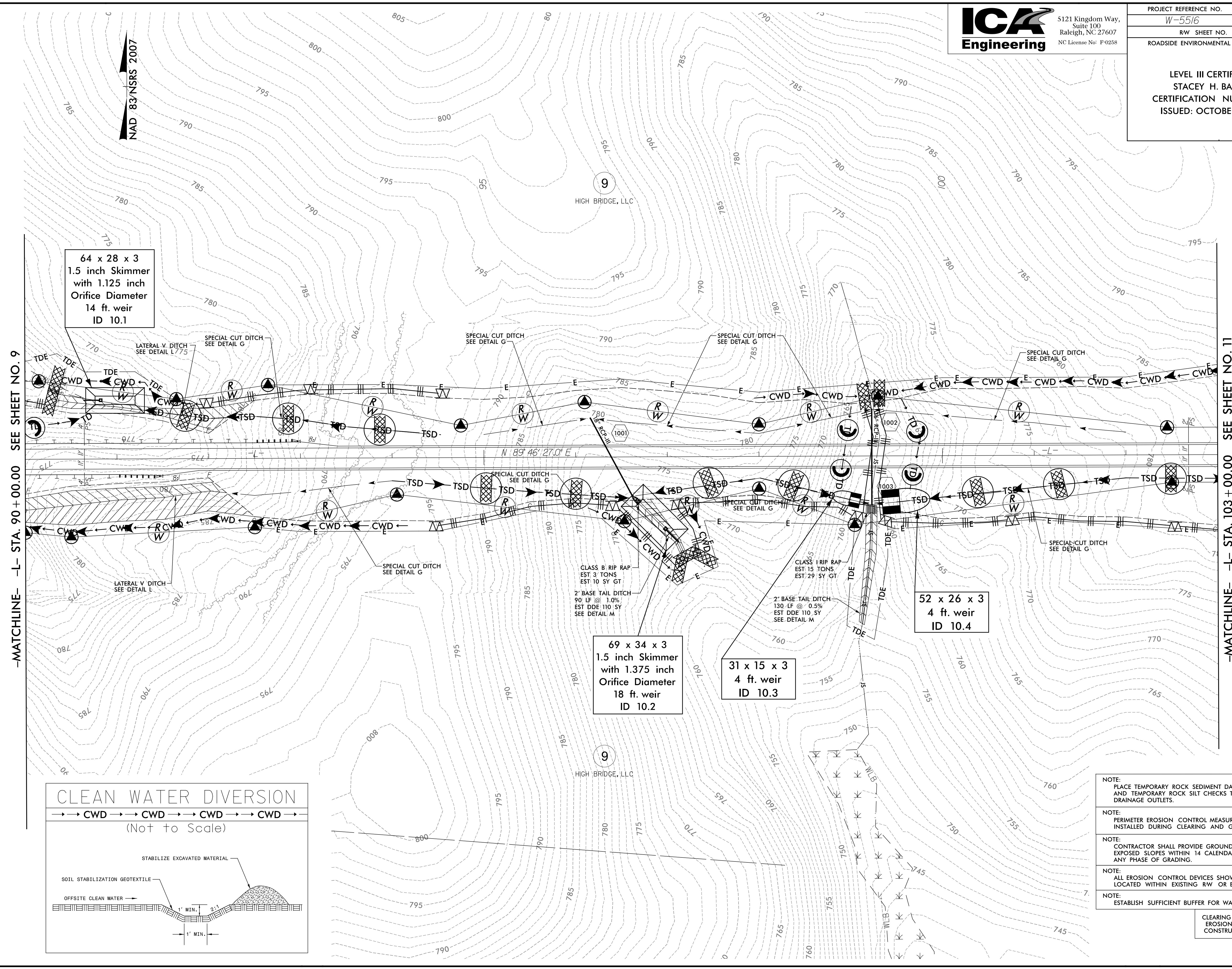


10-22-14 REVISED STATION/OFFSET CALLOUTS ON PARCEL 9
 5/14/2014
 I:\Projects\10-22-14\10-22-14.ecad\w5516-hyd-erosion.c&g.pst\10.dgn
 ICA ENGINEERING, INC.

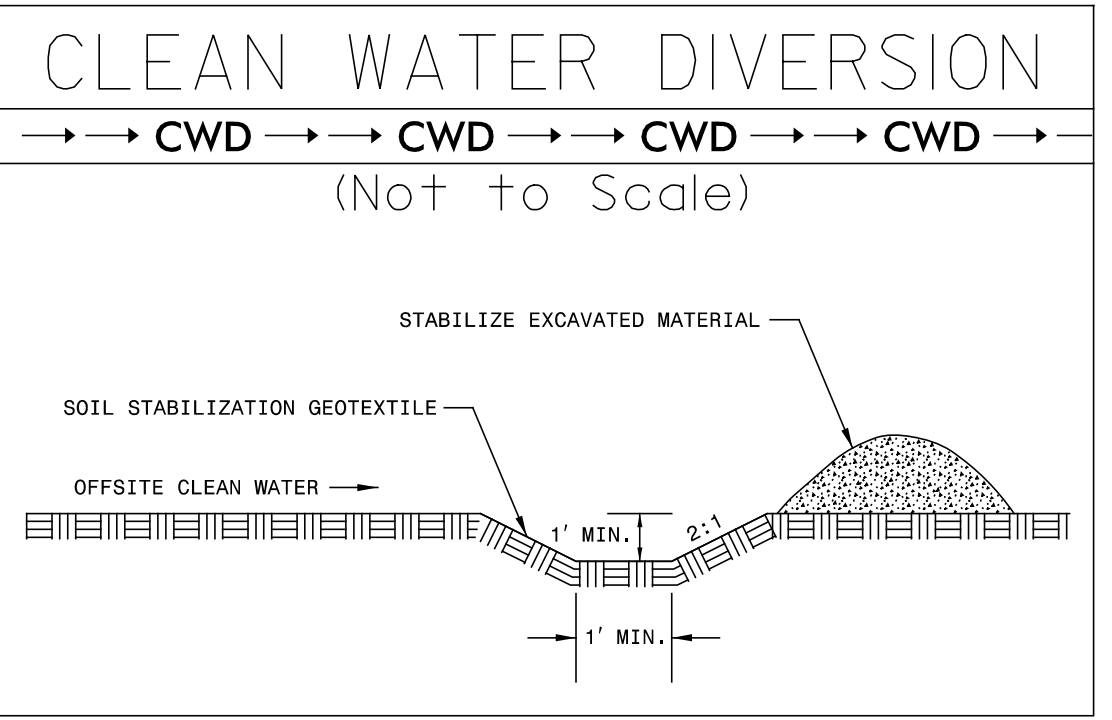


64 x 28 x 3
 1.5 inch Skimmer
 with 1.125 inch
 Orifice Diameter
 14 ft. weir
 ID 10.1

69 x 34 x 3
 1.5 inch Skimmer
 with 1.375 inch
 Orifice Diameter
 18 ft. weir
 ID 10.2

31 x 15 x 3
 4 ft. weir
 ID 10.3

52 x 26 x 3
 4 ft. weir
 ID 10.4



- NOTE:
PLACE TEMPORARY ROCK SEDIMENT DAMS TYPE - B AND TEMPORARY ROCK SILT CHECKS TYPE - A AT DRAINAGE OUTLETS.
- NOTE:
PERIMETER EROSION CONTROL MEASURES SHALL BE INSTALLED DURING CLEARING AND GRUBBING PHASE.
- NOTE:
CONTRACTOR SHALL PROVIDE GROUND COVER ON EXPOSED SLOPES WITHIN 14 CALENDAR DAYS, AFTER ANY PHASE OF GRADING.
- NOTE:
ALL EROSION CONTROL DEVICES SHOWN ARE LOCATED WITHIN EXISTING RW OR EASEMENT.
- NOTE:
ESTABLISH SUFFICIENT BUFFER FOR WATER COURSE.

CLEARING AND GRUBBING EROSION CONTROL FOR CONSTRUCTION SHEET 10

REVISIONS

10-22-14 REVISED STATION/OFFSET CALLOUTS ON PARCEL 9

10/24/2014
 I:\Projects\10-22-14\10-22-14.ecad\w5516-hyd-erosion.c&g.pst\10.dgn
 ICA ENGINEERING, INC.