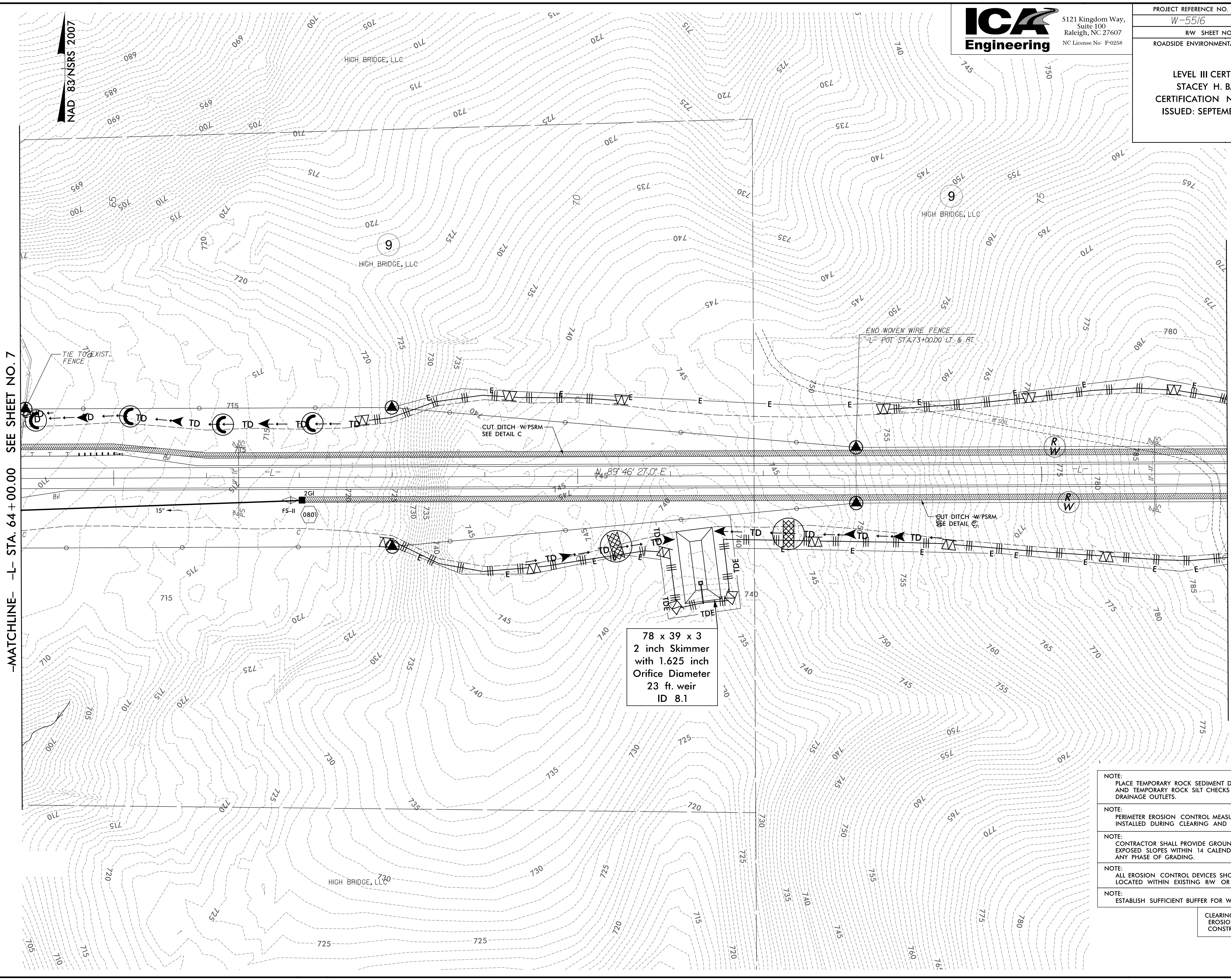


5/14/99

9/10/2014
C:\Users\jacobd\w5516_hyd_erosion_c&g_psh_08.dgn
JACOBS ENGINEERING, INC.

ICA Engineering
 5121 Kingdom Way,
 Suite 100
 Raleigh, NC 27607
 NC License No: F-0258

PROJECT REFERENCE NO.	SHEET NO.
W-5516	EC-8/CONST.8
RW SHEET NO.	
ROADSIDE ENVIRONMENTAL PROJECT ENGINEER	
LEVEL III CERTIFIED BY: STACEY H. BAILEY, PE CERTIFICATION NUMBER: 3074 ISSUED: SEPTEMBER 15, 2014	



-MATCHLINE- -L- STA. 64 + 00.00 SEE SHEET NO. 7

-MATCHLINE- -L- STA. 77 + 00.00 SEE SHEET NO. 9

78 x 39 x 3
 2 inch Skimmer
 with 1.625 inch
 Orifice Diameter
 23 ft. weir
 ID 8.1

- NOTE: PLACE TEMPORARY ROCK SEDIMENT DAMS TYPE - B AND TEMPORARY ROCK SILT CHECKS TYPE - A AT DRAINAGE OUTLETS.
- NOTE: PERIMETER EROSION CONTROL MEASURES SHALL BE INSTALLED DURING CLEARING AND GRUBBING PHASE.
- NOTE: CONTRACTOR SHALL PROVIDE GROUND COVER ON EXPOSED SLOPES WITHIN 14 CALENDAR DAYS, AFTER ANY PHASE OF GRADING.
- NOTE: ALL EROSION CONTROL DEVICES SHOWN ARE LOCATED WITHIN EXISTING RW OR EASEMENT.
- NOTE: ESTABLISH SUFFICIENT BUFFER FOR WATER COURSE.

CLEARING AND GRUBBING
 EROSION CONTROL FOR
 CONSTRUCTION SHEET 8