

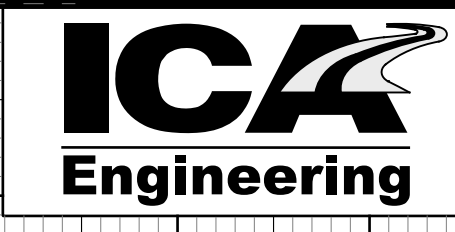
5/28/09

-L- OLD BEATTY FORD ROAD

PIPE HYDRAULIC DATA
18" RCP-III STA 124+10 -L-

DRAINAGE AREA	= 1.86	AC
DESIGN FREQUENCY	= 50	YRS
DESIGN DISCHARGE	= 7	CFS
DESIGN HW ELEVATION	= 797.20	FT
100 YEAR DISCHARGE	= 8	CFS
100 YEAR HW ELEVATION	= 797.35	FT
OVERTOPPING FREQUENCY	= 500+	YRS
OVERTOPPING DISCHARGE	= 17	CFS
OVERTOPPING ELEVATION	= 800.15	FT

INV IN = 795.70 INV OUT = 792.65



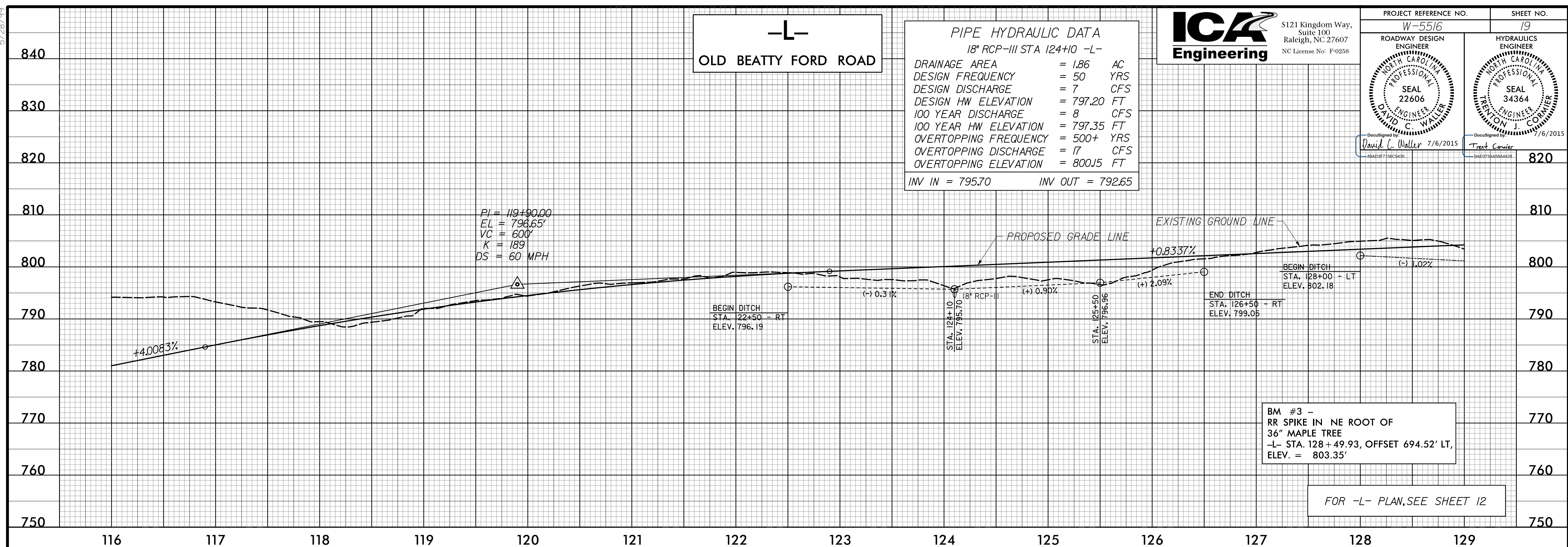
5121 Kingdom Way,
Suite 100
Raleigh, NC 27607
NC License No: F-0258

PROJECT REFERENCE NO. **W-5516** SHEET NO. **19**

ROADWAY DESIGN ENGINEER
HYDRAULICS ENGINEER

DAVID C. WALLER
SEAL 22606
DAVID C. WALLER
SEAL 34364

7/6/2015
7/6/2015



BM #3 -
RR SPIKE IN NE ROOT OF
36" MAPLE TREE
-L- STA. 128+49.93, OFFSET 694.52' LT,
ELEV. = 803.35'

FOR -L- PLAN, SEE SHEET 12

-L- OLD BEATTY FORD ROAD

-Y3-
RELOCATED LENTZ RD
(SR 1337)

PIPE HYDRAULIC DATA
24" RCP-IV STA 129+62 -L-

DRAINAGE AREA	= 4.10	AC
DESIGN FREQUENCY	= 50	YRS
DESIGN DISCHARGE	= 13	CFS
DESIGN HW ELEVATION	= 802.39	FT
100 YEAR DISCHARGE	= 14	CFS
100 YEAR HW ELEVATION	= 802.47	FT
OVERTOPPING FREQUENCY	= 500+	YRS
OVERTOPPING DISCHARGE	= 34	CFS
OVERTOPPING ELEVATION	= 805.53	FT

INV IN = 800.50 INV OUT = 798.50

PIPE HYDRAULIC DATA
18" RCP-IV STA 137+58 -L-

DRAINAGE AREA	= 1.74	AC
DESIGN FREQUENCY	= 50	YRS
DESIGN DISCHARGE	= 6	CFS
DESIGN HW ELEVATION	= 808.12	FT
100 YEAR DISCHARGE	= 6	CFS
100 YEAR HW ELEVATION	= 808.12	FT
OVERTOPPING FREQUENCY	= 500+	YRS
OVERTOPPING DISCHARGE	= 16	CFS
OVERTOPPING ELEVATION	= 812.10	FT

INV IN = 806.68 INV OUT = 806.30

UNDERCUT EXCAVATION

RIGHT DITCH

LEFT DITCH

FOR -L- PLAN, SEE SHEET 13

7/6/2015
7/6/2015