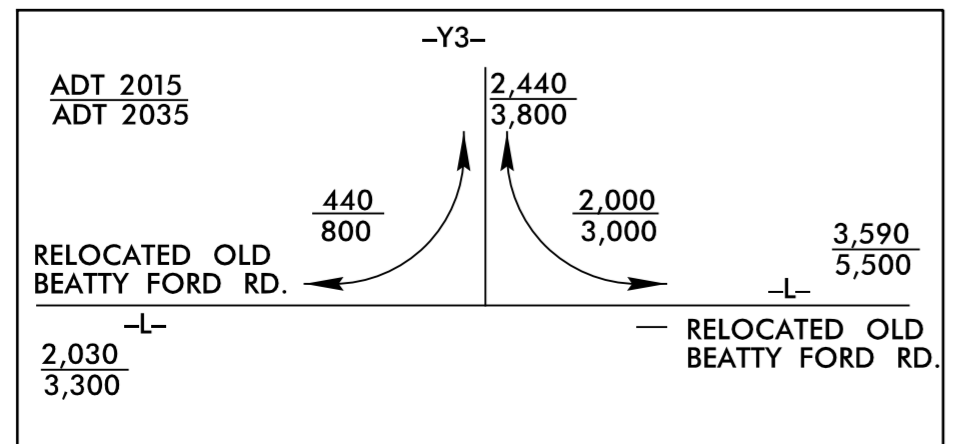
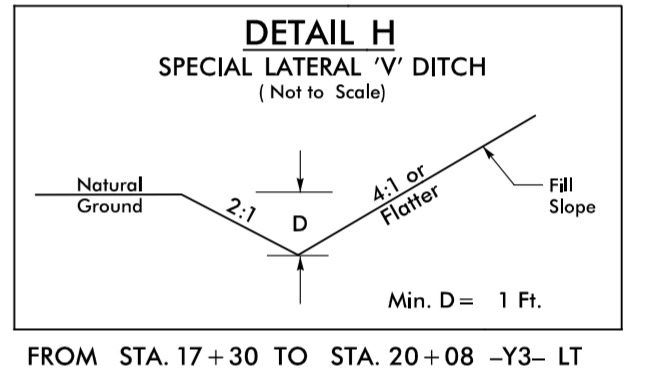
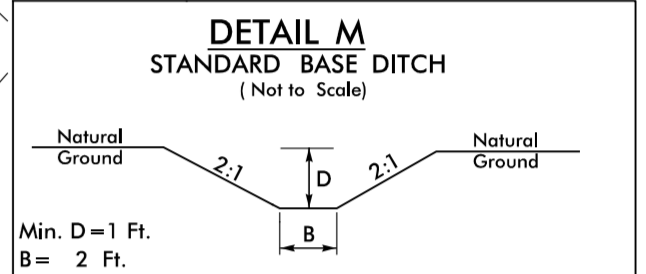
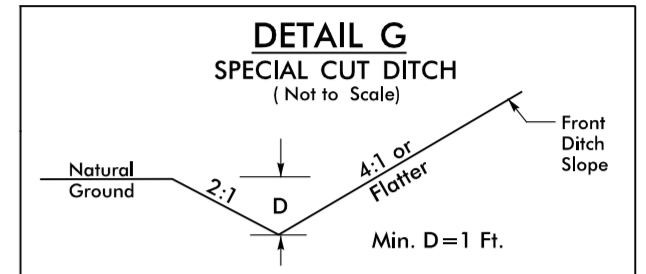
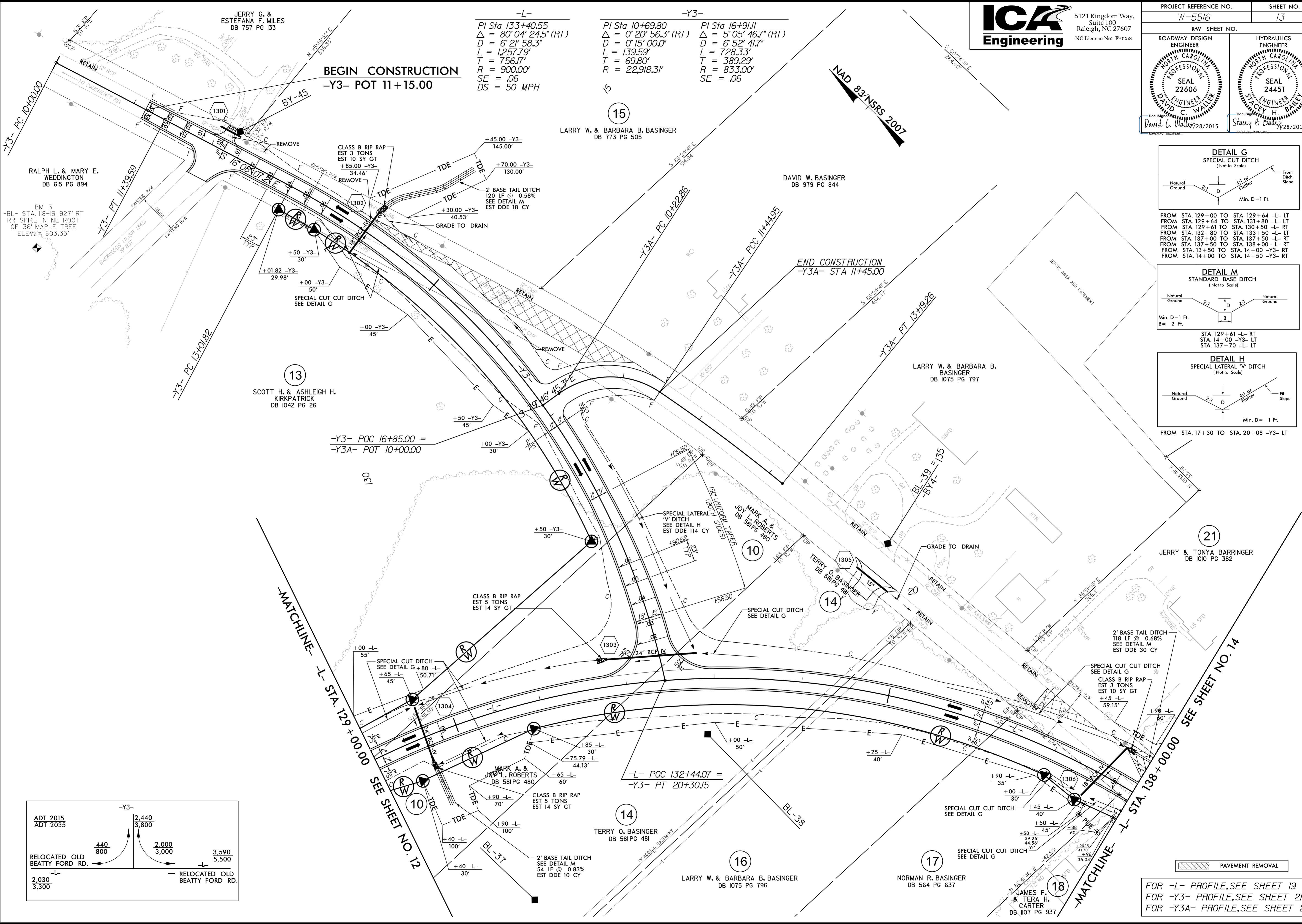


-L-
 PI Sta 133+40.55
 $\Delta = 80^{\circ} 04' 24.5" (RT)$
 $D = 6' 21" 58.3"$
 $L = 1,257.79'$
 $T = 756.17'$
 $R = 900.00'$
 $SE = .06$
 $DS = 50 MPH$

-Y3-
 PI Sta 10+69.80
 $\Delta = 0^{\circ} 20' 56.3" (RT)$
 $D = 0' 15" 00.0"$
 $L = 139.59'$
 $T = 69.80'$
 $R = 22,918.31'$

-Y3-
 PI Sta 16+91.11
 $\Delta = 5^{\circ} 05' 46.7" (RT)$
 $D = 6' 52" 41.7"$
 $L = 728.33'$
 $T = 389.29'$
 $R = 833.00'$
 $SE = .06$



FOR -L- PROFILE, SEE SHEET 19
 FOR -Y3- PROFILE, SEE SHEET 21
 FOR -Y3A- PROFILE, SEE SHEET 21

7/28/2015
 ICA Engineering
 W-5516-rdy_psh_13.dgn