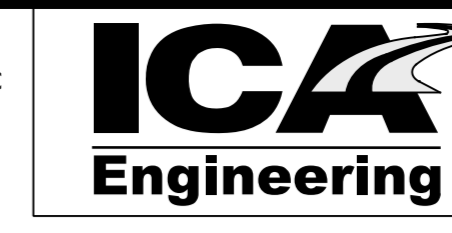


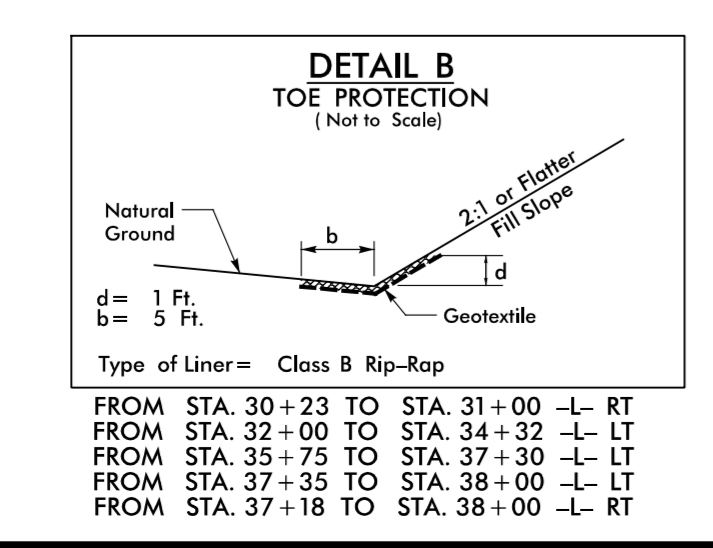
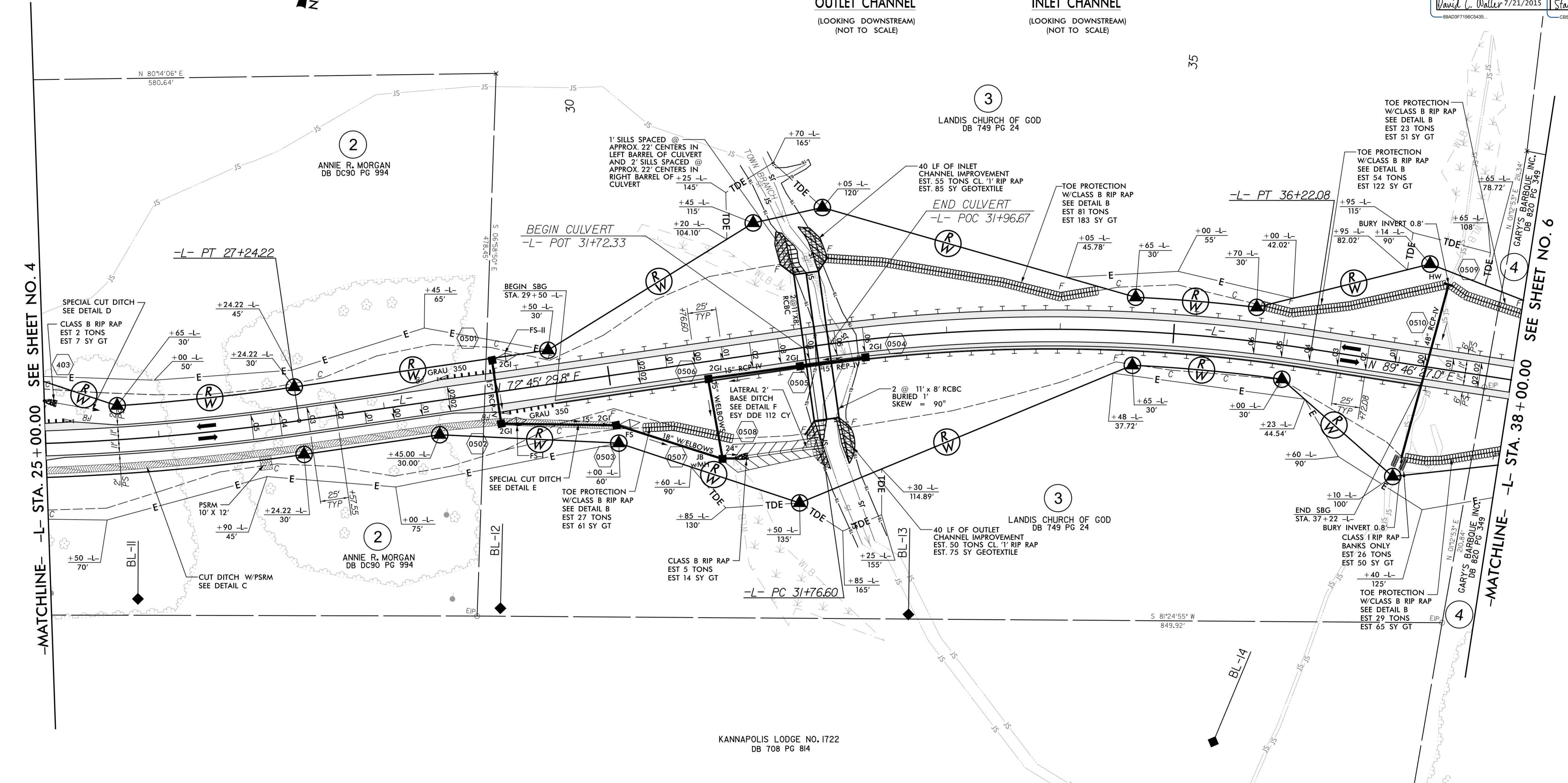
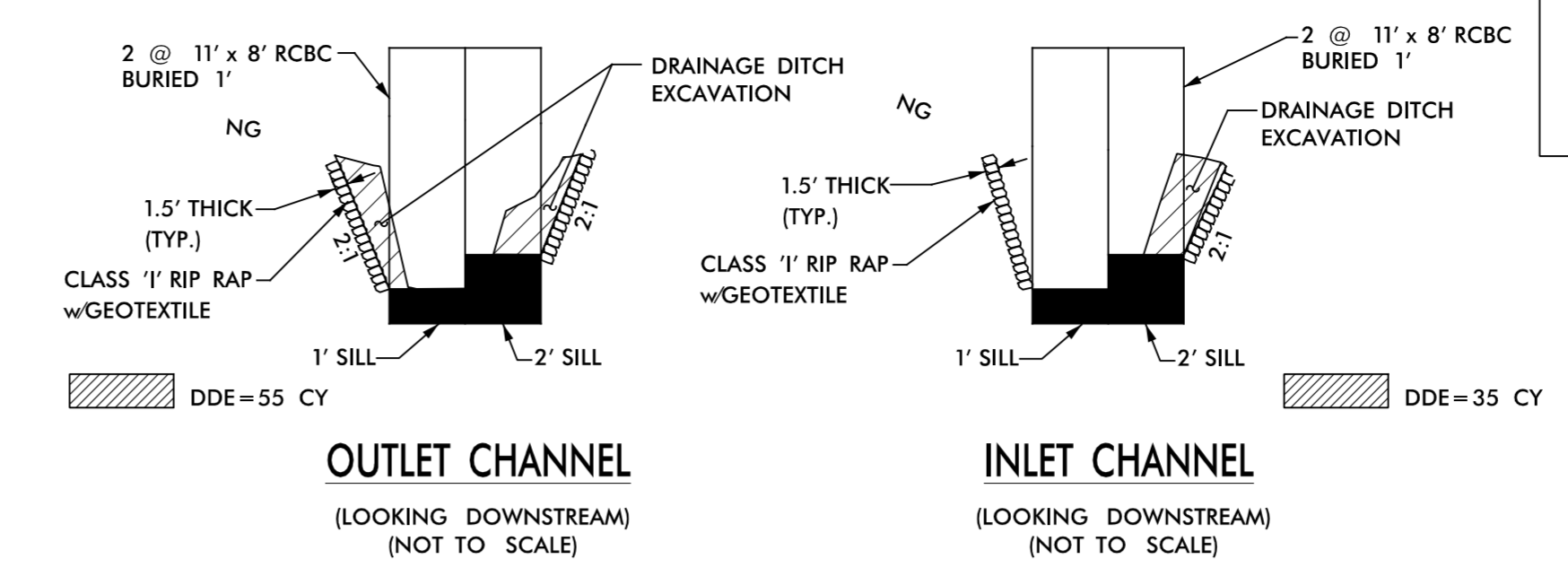
5/14/19

NAD 83/NSRS 2007

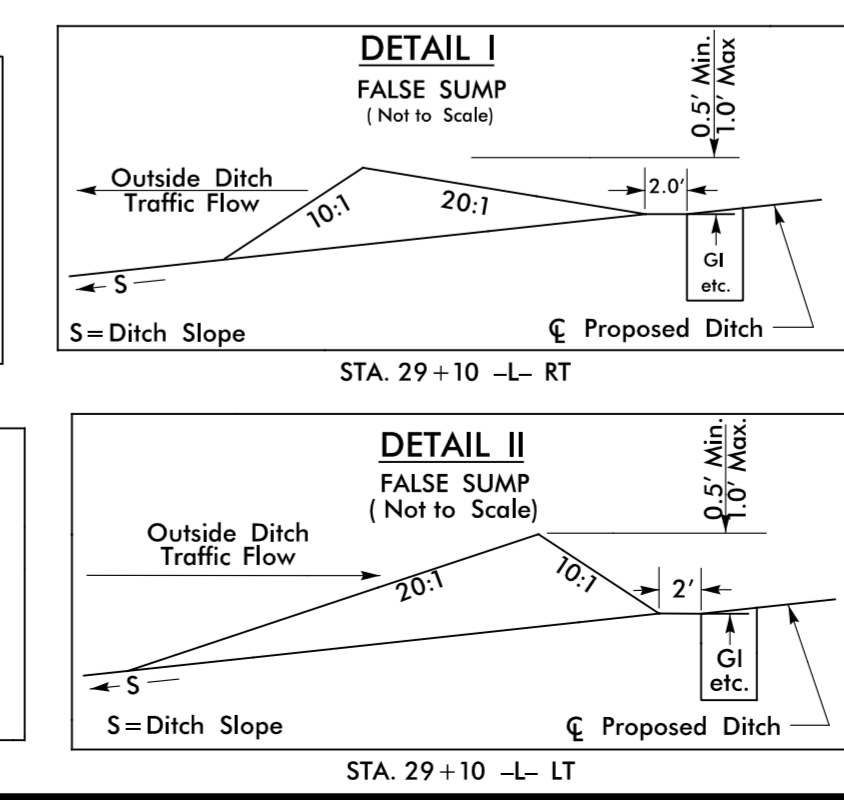
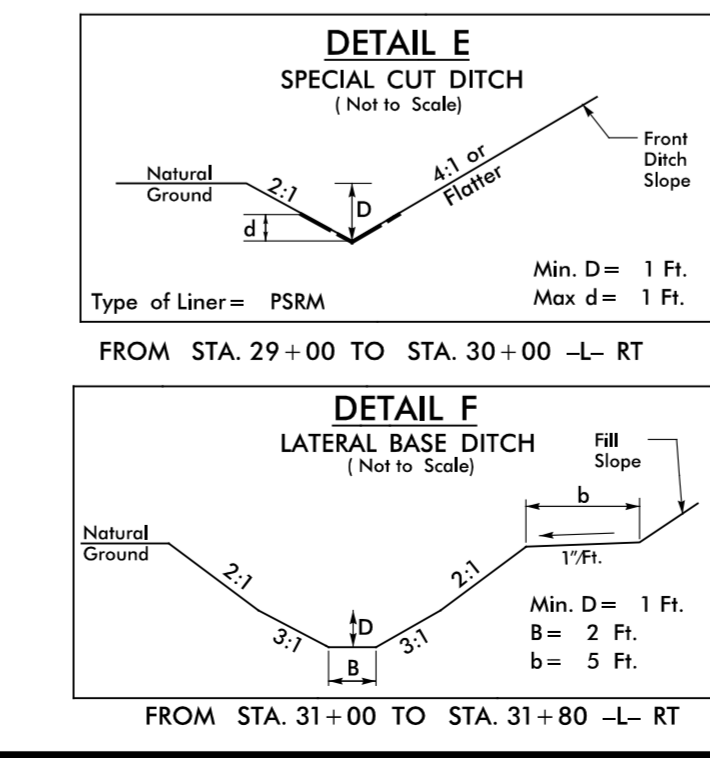
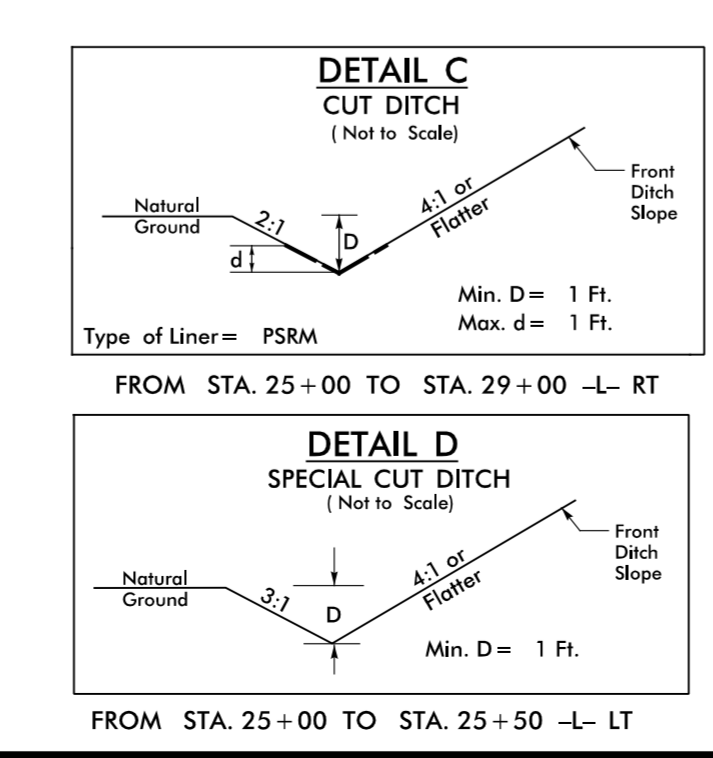


5121 Kingdom Way,  
Suite 100  
Raleigh, NC 27607  
NC License No: F-0258

PROJECT REFERENCE NO. W-5516	SHEET NO. 5
RW SHEET NO.	
ROADWAY DESIGN ENGINEER DAVID C. WALKER PROFESSIONAL SEAL 22606	HYDRAULICS ENGINEER STACY H. BAILEY PROFESSIONAL SEAL 24451
DocuSigned by: David C. Walker 7/21/2015	DocuSigned by: Stacy H. Bailey 7/21/2015



-L-	
PI Sta 22+94.13	PI Sta 34+00.99
$\Delta = 24' 32'' 30.2''$ (LT)	$\Delta = 17' 00'' 57.2''$ (RT)
D = 2' 48' 31.0"	D = 3' 49' 11.0"
L = 873.80'	L = 445.48'
T = 443.71'	T = 224.39'
R = 2,040.00'	R = 1,500.00'
SE = .05	SE = .06
DS = 50 MPH	DS = 50 MPH



FOR -L- PROFILE, SEE SHEET 15

7/20/2015 10:55:16 AM rdy\_psh\_05.edg