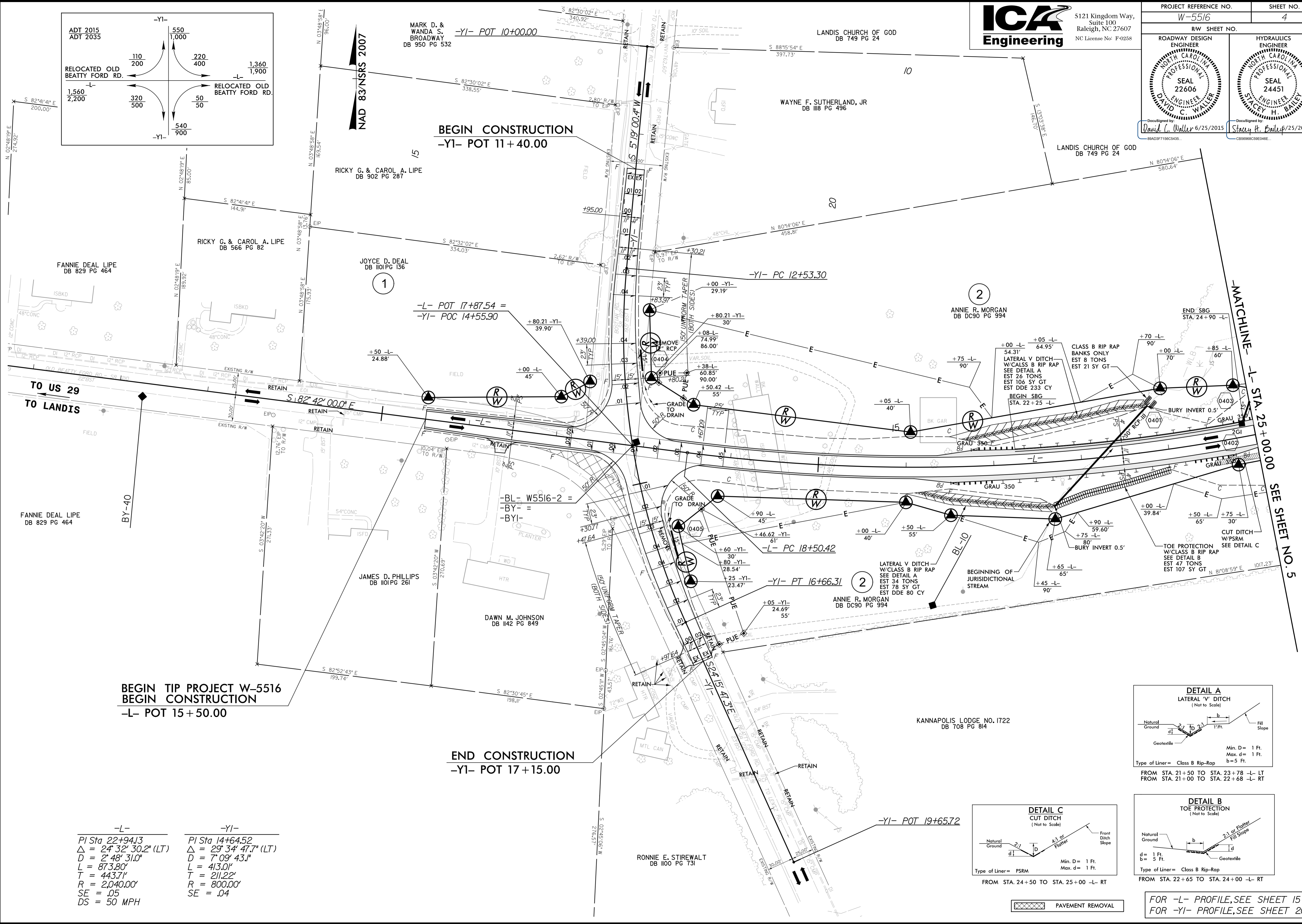
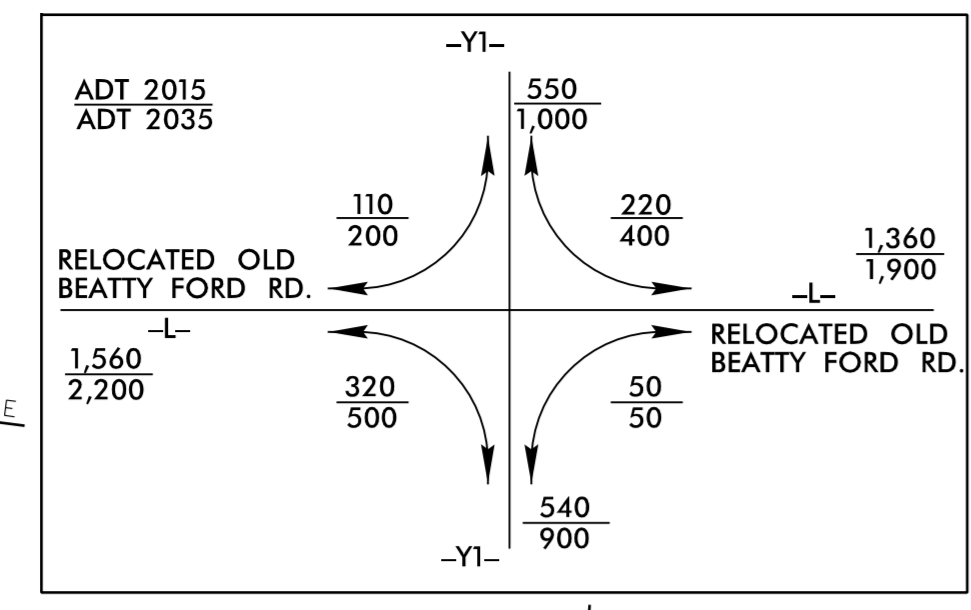




5121 Kingdom Way,  
Suite 100  
Raleigh, NC 27607  
NC License No: F-0258

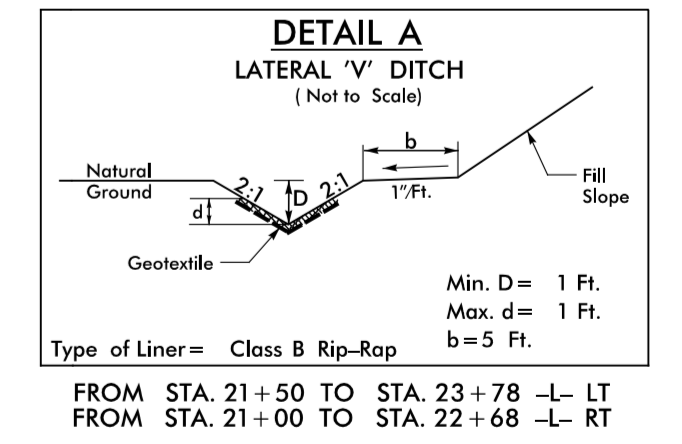
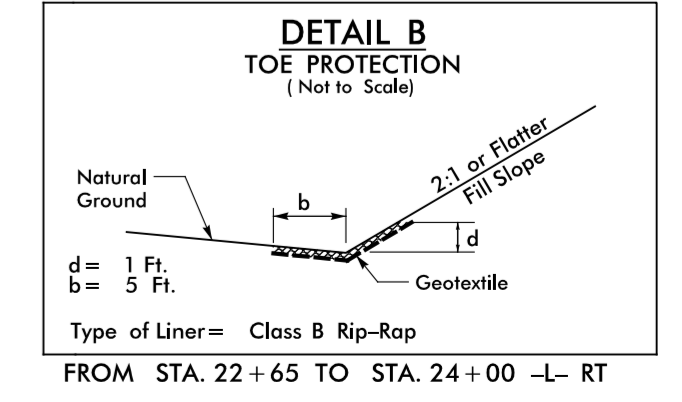
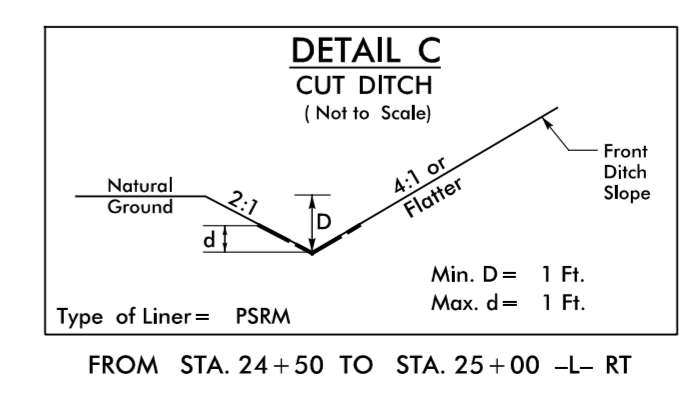
PROJECT REFERENCE NO. W-5516	SHEET NO. 4
RW SHEET NO.	
ROADWAY DESIGN ENGINEER DAVID C. WALLER SEAL 22606	HYDRAULICS ENGINEER STACEY H. BAILEY SEAL 24451
DocuSigned by: David C. Waller 6/25/2015	DocuSigned by: Stacey H. Bailey 6/25/2015



**BEGIN TIP PROJECT W-5516  
BEGIN CONSTRUCTION**  
-L- POT 15 + 50.00

**END CONSTRUCTION**  
-YI- POT 17 + 15.00

-L-	-YI-
PI Sta 22+94.13	PI Sta 14+64.52
$\Delta = 24' 32" 30.2" (LT)$	$\Delta = 29' 34" 47.7" (LT)$
$D = 2' 48" 31.0"$	$D = 7' 09" 43.1"$
$L = 873.80'$	$L = 413.01'$
$T = 443.71'$	$T = 211.22'$
$R = 2,040.00'$	$R = 800.00'$
$SE = .05$	$SE = .04$
$DS = 50 MPH$	



PAVEMENT REMOVAL

FOR -L- PROFILE, SEE SHEET 15  
FOR -YI- PROFILE, SEE SHEET 20

6/25/2015 10:30:00 AM W-5516\_rdy\_psh\_04.dgn