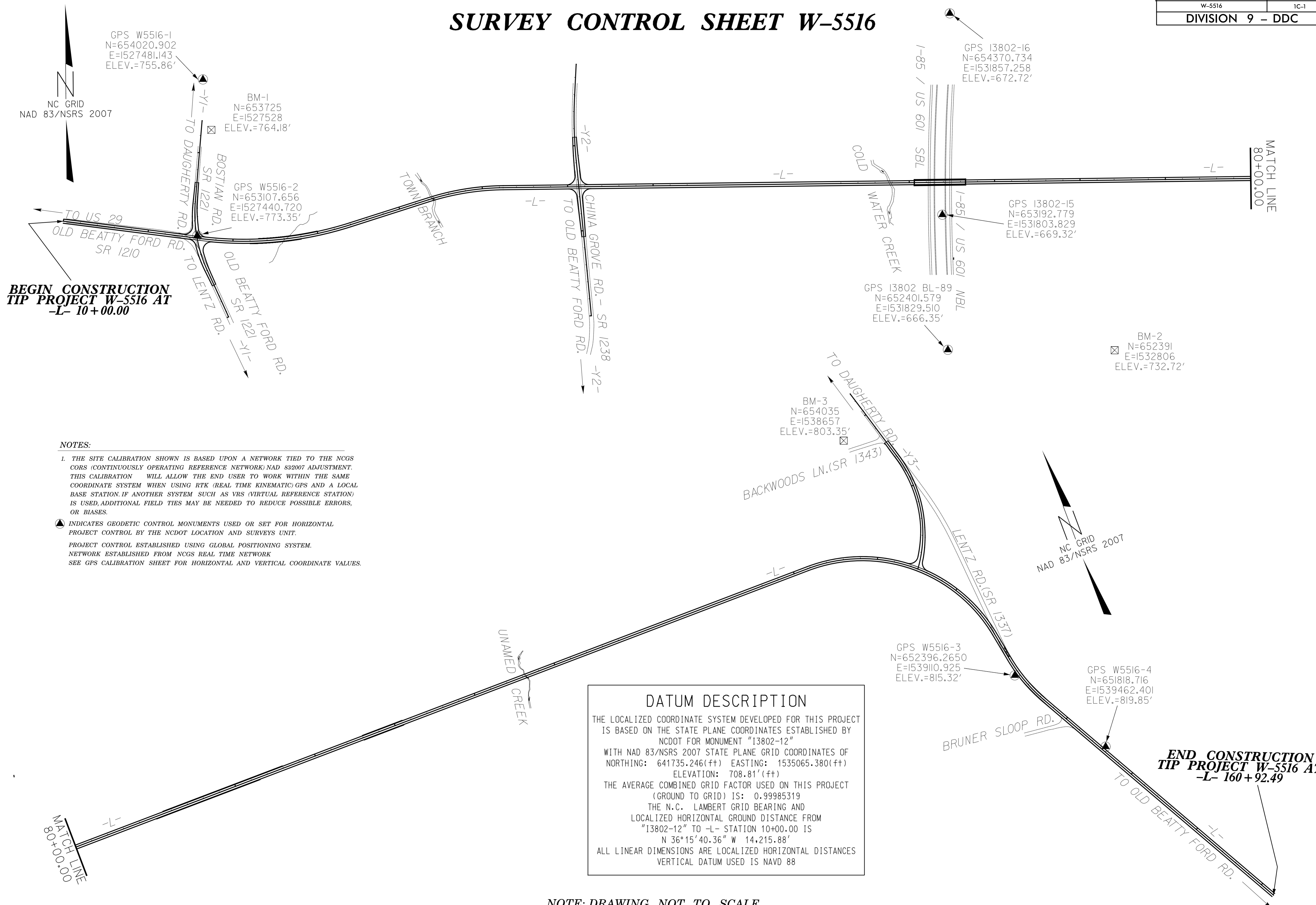


PROJECT REFERENCE NO.	SHEET NO.
W-5516	1C-1
DIVISION 9 - DDC	

# SURVEY CONTROL SHEET W-5516



**BEGIN CONSTRUCTION  
TIP PROJECT W-5516 AT  
-L- 10+00.00**

**END CONSTRUCTION  
TIP PROJECT W-5516 AT  
-L- 160+92.49**

### NOTES:

1. THE SITE CALIBRATION SHOWN IS BASED UPON A NETWORK TIED TO THE NCGS CORS (CONTINUOUSLY OPERATING REFERENCE NETWORK) NAD 832007 ADJUSTMENT. THIS CALIBRATION WILL ALLOW THE END USER TO WORK WITHIN THE SAME COORDINATE SYSTEM WHEN USING RTK (REAL TIME KINEMATIC) GPS AND A LOCAL BASE STATION. IF ANOTHER SYSTEM SUCH AS VRS (VIRTUAL REFERENCE STATION) IS USED, ADDITIONAL FIELD TIES MAY BE NEEDED TO REDUCE POSSIBLE ERRORS, OR BIASES.
- ▲ INDICATES GEODETIC CONTROL MONUMENTS USED OR SET FOR HORIZONTAL PROJECT CONTROL BY THE NCDOT LOCATION AND SURVEYS UNIT.  
PROJECT CONTROL ESTABLISHED USING GLOBAL POSITIONING SYSTEM.  
NETWORK ESTABLISHED FROM NCGS REAL TIME NETWORK  
SEE GPS CALIBRATION SHEET FOR HORIZONTAL AND VERTICAL COORDINATE VALUES.

**DATUM DESCRIPTION**

THE LOCALIZED COORDINATE SYSTEM DEVELOPED FOR THIS PROJECT IS BASED ON THE STATE PLANE COORDINATES ESTABLISHED BY NCDOT FOR MONUMENT "13802-12" WITH NAD 83/NSRS 2007 STATE PLANE GRID COORDINATES OF NORTHING: 641735.246(±) EASTING: 1535065.380(±) ELEVATION: 708.81'(±)

THE AVERAGE COMBINED GRID FACTOR USED ON THIS PROJECT (GROUND TO GRID) IS: 0.99985319

THE N.C. LAMBERT GRID BEARING AND LOCALIZED HORIZONTAL GROUND DISTANCE FROM "13802-12" TO -L- STATION 10+00.00 IS  
N 36°15'40.36" W 14,215.88'

ALL LINEAR DIMENSIONS ARE LOCALIZED HORIZONTAL DISTANCES  
VERTICAL DATUM USED IS NAVD 88

NOTE: DRAWING NOT TO SCALE

7/26/2016 8:39:23 AM C:\Projects\W5516.dwg 1C-1.dgn