

EMERGENCY VEHICLE PREEMPTION PROGRAMMING DETAIL

(program controller as shown below)

From Main Menu press 'A' (Preemption), then '1' (Standard Preemptions). Press 'NEXT' to advance to Preemption #2.

PREEMPTION #2	SETTINGS (NEXT:1-10)
INTERVAL/TIMING	CLEAR/DWELL PHASES
GRN YEL RED	12345678910111213141516
1 255 0.0 0.0	X
2 0 0.0 0.0	
3 0 0.0 0.0	
4 0 0.0 0.0	
5 1 0.0 0.0	X

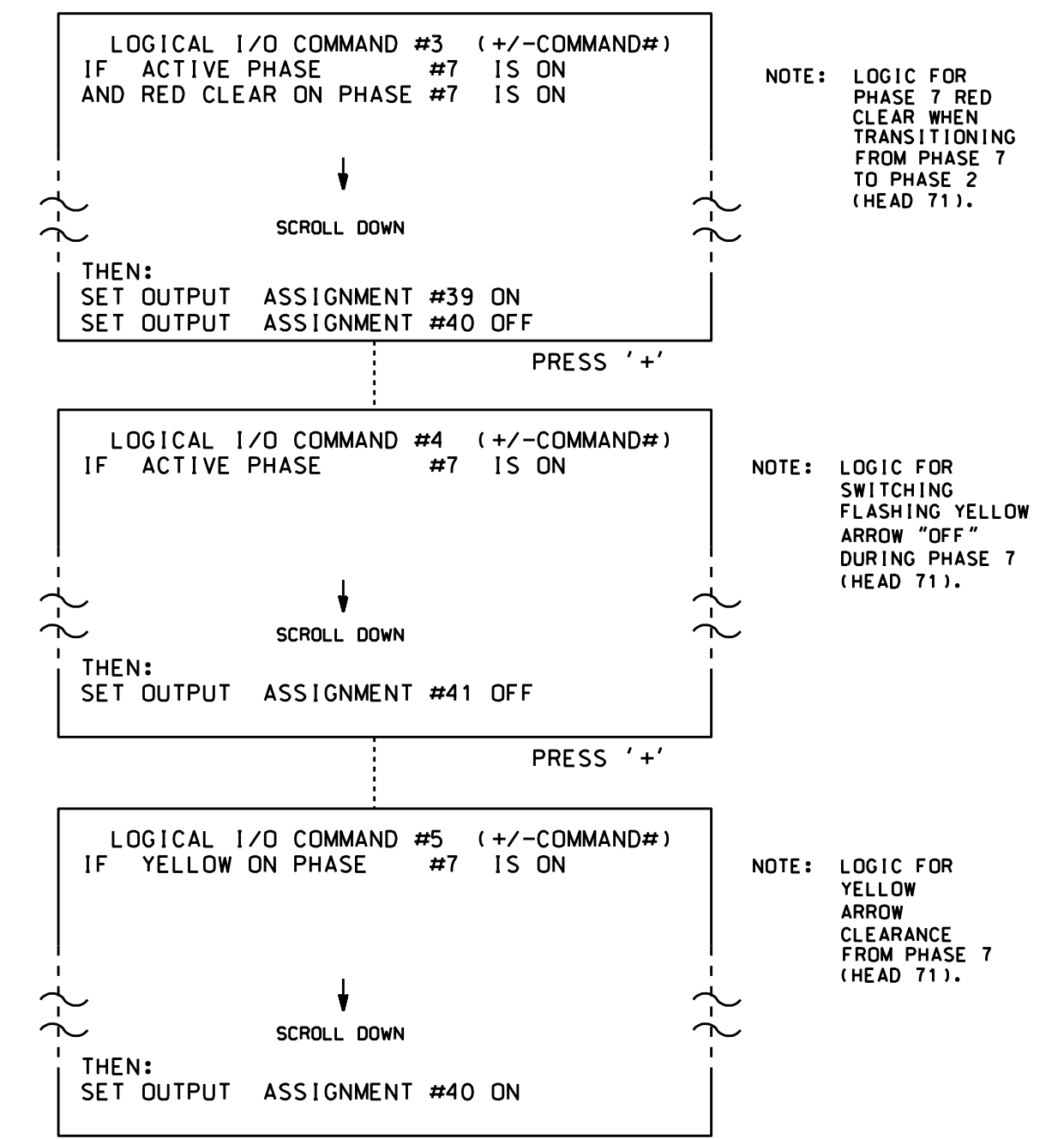
EXIT CALLS	OPTIONS
PRIORITY (Y/N TO SELECT)	MED
DELAY TIMER (0-255 SEC)	*
MIN GREEN BEFORE PRE (0= DEFAULT)...	1
PED CLEAR BEFORE PRE (0= DEFAULT)...	0
YELLOW CLEAR BEFORE PRE (0= DEFAULT)...	0
RED CLEAR BEFORE PRE (0= DEFAULT)...	0
DWELL MIN TIMER (0-255 SEC)	*
DWELL MAX TIMER (0=OFF,1-255MIN) ...	0
DWELL HOLD-OVER TIMER (0-255)	0
LATCH CALL?	Y
LINK TO NEXT PREEMPT?	N
ENABLE BACKUP PROTECTION?	N
HOLD CLEAR 1 PHASES DURING DELAY? ...	N
FAST GREEN FLASH DWELL PHASES?	N
PED CLEARANCE THROUGH YELLOW?	N
INHIBIT OVERLAP GREEN EXTENSION? ...	N
SERVICE DURING SOFTWARE FLASH?	N
REST IN RED DURING DWELL INTERVAL? ..	Y
FLASH DWELL INTERVAL?	N
ALLOW PEDS IN DWELL INTERVAL?	N
RE-TIME DWELL INTERVAL?	Y
OVERLAPS:	ABCDEFGHIJKLMN
DWELL INT FLASH YELLOW	
OMIT OVERLAPS:	X

* Denotes timing to be determined in field.

LOGICAL I/O PROCESSOR PROGRAMMING DETAIL TO PRODUCE SPECIAL FYA-PPLT SIGNAL SEQUENCE

(program controller as shown below)

- FROM MAIN MENU PRESS '2' (PHASE CONTROL), THEN '1' (PHASE CONTROL FUNCTIONS). SCROLL TO THE BOTTOM OF THE MENU AND ENABLE ACT LOGIC COMMANDS 3 THROUGH 5.
- FROM MAIN MENU PRESS '6' (OUTPUTS), THEN '3' (LOGICAL I/O PROCESSOR).



LOGIC I/O PROCESSOR PROGRAMMING COMPLETE

OUTPUT REFERENCE SCHEDULE
OUTPUT 39 = Overlap D Red
OUTPUT 40 = Overlap D Yellow
OUTPUT 41 = Overlap D Green

OVERLAP PROGRAMMING DETAIL

(program controller as shown below)

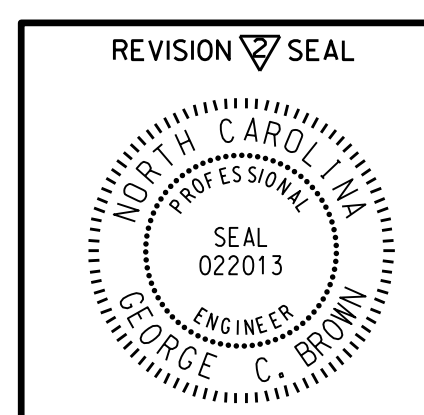
FROM MAIN MENU PRESS '8' (OVERLAPS), THEN '1' (VEHICLE OVERLAP SETTINGS).

PAGE 1: VEHICLE OVERLAP 'D' SETTINGS	
PHASE:	12345678910111213141516
VEH OVL PARENTS:	X X
VEH OVL NOT VEH:	
VEH OVL NOT PED:	
VEH OVL GRN EXT:	
STARTUP COLOR:	- RED - YELLOW - GREEN
FLASH COLORS:	- RED - YELLOW X GREEN
SELECT VEHICLE OVERLAP OPTIONS: (Y/N)	
FLASH YELLOW IN CONTROLLER FLASH?...	Y
GREEN EXTENSION (0-255 SEC).....	0
YELLOW CLEAR (0=PARENT,3-25.5 SEC)...	0
RED CLEAR (0=PARENT,0.1-25.5 SEC)...	0
OUTPUT AS PHASE # (0=NONE, 1-16)...	0

← NOTICE GREEN FLASH

OVERLAP PROGRAMMING COMPLETE

THIS ELECTRICAL DETAIL IS FOR THE SIGNAL DESIGN: 03-1021
 DESIGNED: March 2008
 SEALED: June 19, 2008
 REVISED: 7/20/2015



DocuSigned by: George C. Brown 7/30/2015
 F1201ED08E844 DATE

Electrical Detail - Sheet 4 of 5

ELECTRICAL AND PROGRAMMING DETAILS FOR: Prepared in the Offices of: 750 Greenfield Pkwy, Garner, NC 27529	US 421 (Carolina Beach Road) at The Kings Hwy.		SEAL This document originally issued and sealed by F. Royal Hinshaw, #032117, on 8-12-08. This media shall not be considered a certified document.
	Division 3 PREPARED BY: R. Hinshaw PLAN DATE: March 2008	New Hanover County MYRTLE GROVE REVIEWED BY: REVISIONS:	

REVISIONS: 1. REVISED FIRE PREEMPTION PUSH BUTTON AND INDICATOR LAMP WIRING DETAIL. ALSO REVISED PREEMPT PROGRAMMING DETAIL AND ADDED AC ISOLATOR DETAIL. 02/04/2009 -MM-
 2. No change to Electrical Detail. CES 6/14/15