

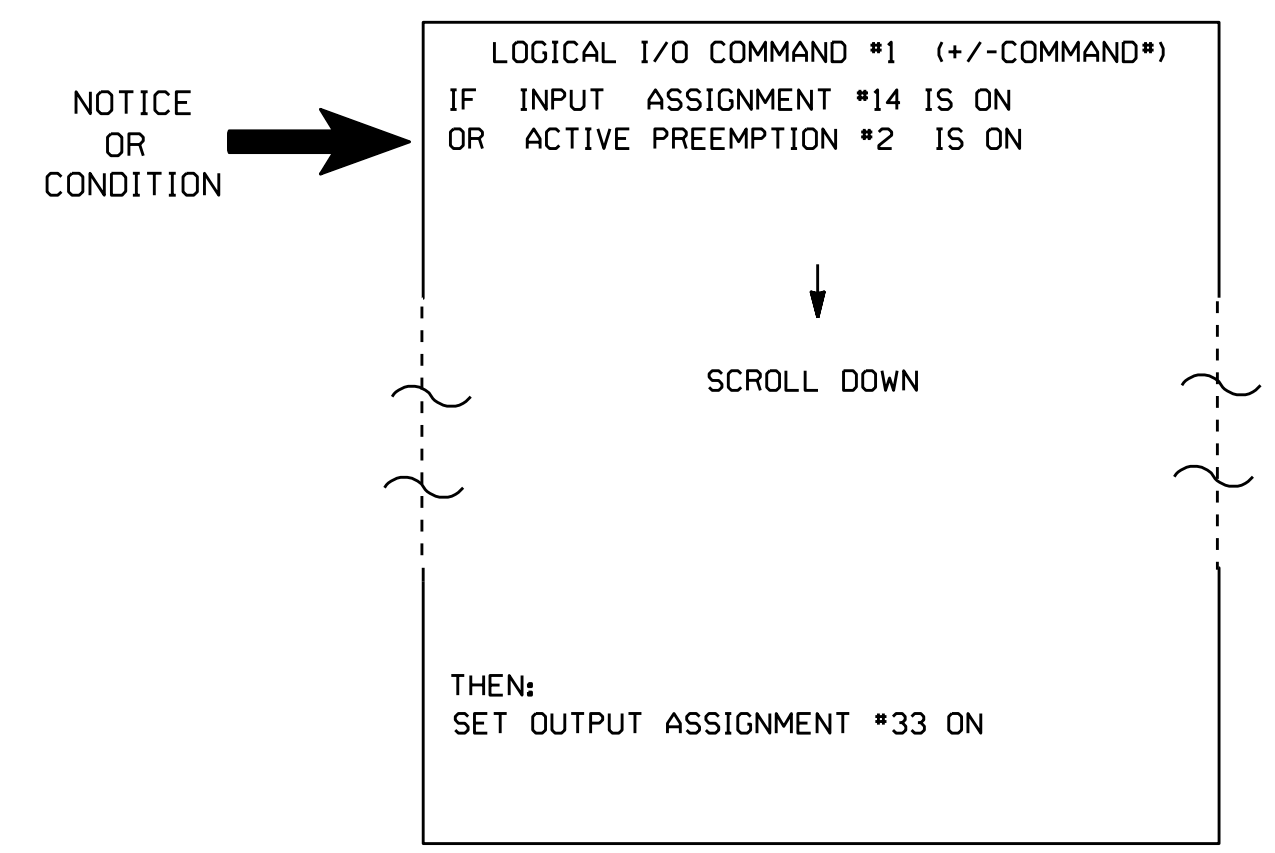
## FIREHOUSE INDICATOR LAMP LOGICAL I/O PROCESSOR PROGRAMMING DETAIL

### NOTE

When preempt delay time is used, Step 1 below is necessary to ensure the pilot lamp in the fire house will activate immediately after the push button is depressed:

### STEP 1

From Main Menu: Press '6' (Outputs), then select '3' (Logical I/O Processor).

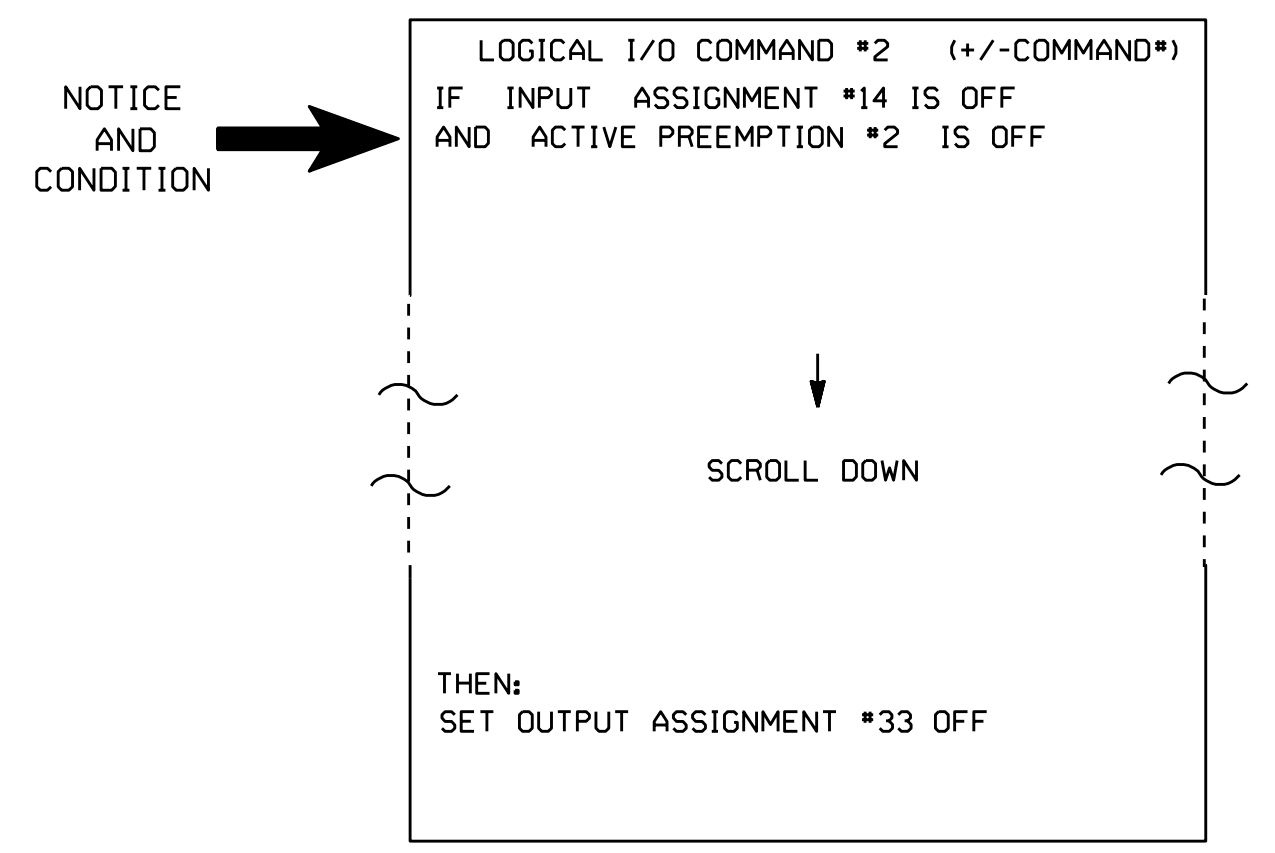


### STEP 2

### NOTE

In order for pilot lamp in fire house to deactivate immediately after ending preemption, program the following:

Toggle the '+' button once to access Logical I/O Command #2.



### STEP 3

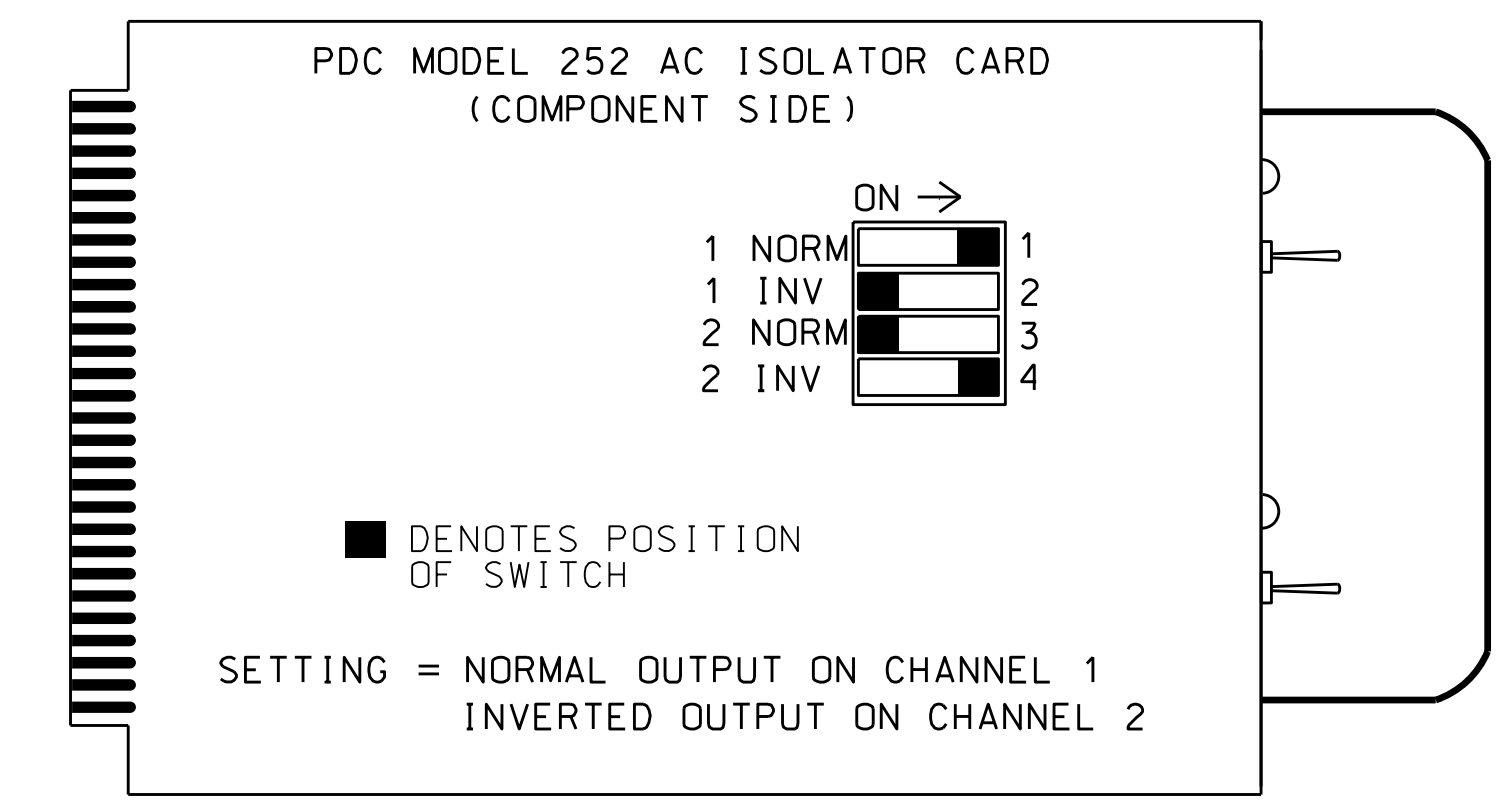
From Main Menu press '2' (Phase Control), then '1' (Phase Control Functions). Scroll to the bottom of the menu and enable logical processor (Act Logic 1-16) by flagging #1 and #2.

END OF PROGRAM.

<b><u>I/O REFERENCE SCHEDULE</u></b>
INPUT 14 = PREEMPT 2 IN
OUTPUT 33 = PHASE 2 PED YELLOW

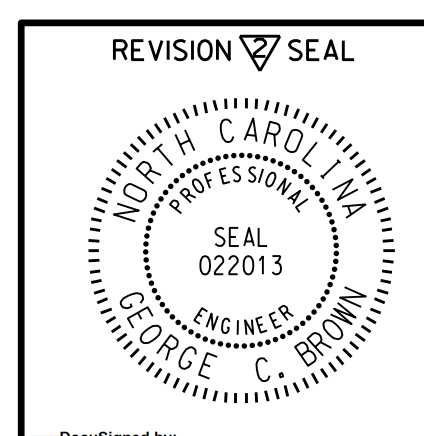
## FIRE PREEMPT AC ISOLATOR (MODEL 252) OUTPUT PROGRAMMING DETAIL

(set DIP switches as shown below)



252 AC ISOLATOR TO BE INSTALLED IN  
SLOT J-14 OF INPUT FILE.

THIS ELECTRICAL DETAIL IS FOR  
THE SIGNAL DESIGN: 03-1021  
DESIGNED: March 2008  
SEALED: June 19, 2008  
REVISED: 7/20/2015



DocuSigned by:  
*George C. Brown* 7/30/2015  
DATE

Electrical Detail - Sheet 3 of 5

	DETAILS FOR: <b>US 421 (Carolina Beach Road)</b> at <b>The Kings Hwy.</b>	SEAL This document originally issued and sealed by F. Royal Hinshaw, #032117, on 8-12-08. This media shall not be considered a certified document.	
	Prepared in the Offices of: Pacific Engineering and Safety Systems, Inc. 750 Greenfield Pkwy, Garner, NC 27529	Division 3 <b>New Hanover County</b> <b>Myrtle Grove</b>	
	PLAN DATE: <b>March 2008</b> PREPARED BY: <b>R. Hinshaw</b>	REVIEWED BY: _____ REVISIONS: _____	
	REVISIONS: _____ No change to Electrical Detail. CES 6/14/15	INIT. DATE JTR 2/6/09 ds MCB 7/30/2015	SIGNATURE _____ DATE _____ SIG. INVENTORY NO. <b>03-1021</b>