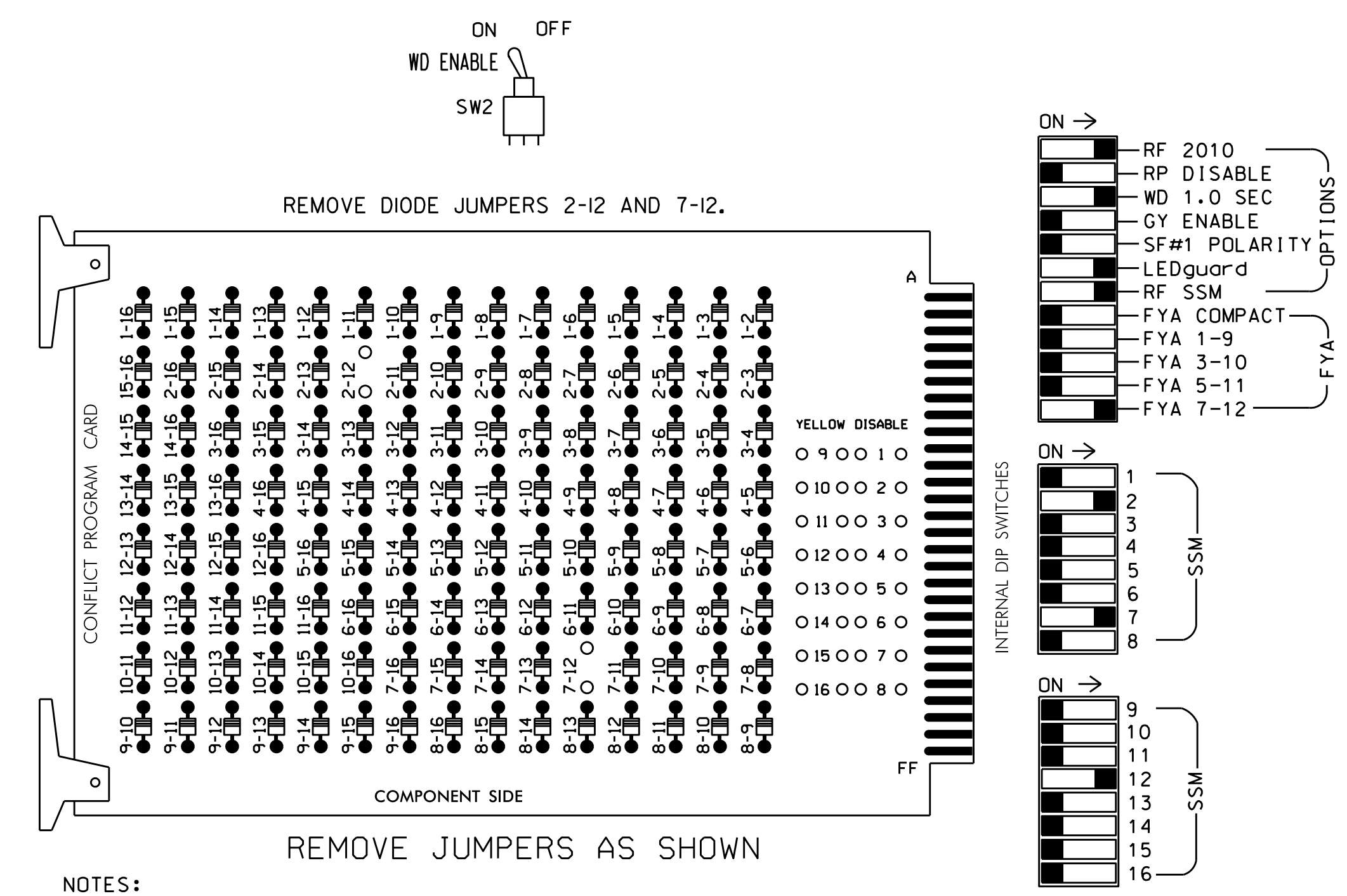


### EDI MODEL 2010ECL-NC CONFLICT MONITOR PROGRAMMING DETAIL

(remove jumpers and set switches as shown)



**NOTES:**

1. Card is provided with all diode jumpers in place. Removal of any jumper allows its channels to run concurrently.
2. Make sure jumpers SEL2-SEL5 are present on the monitor board.

### NOTES

1. To prevent "flash-conflict" problems, insert red flash program blocks for all unused vehicle load switches in the output file. The installer shall verify that signal heads flash in accordance with the Signal Plans.
2. Ensure that Red Enable is active at all times during normal operation. To prevent Red Failures on unused monitor channels, tie unused red monitor inputs 1,3,4,5,6,8,9,10,11,13,14,15 & 16 to load switch AC+ per the cabinet manufacturer's instructions.
3. Enable Simultaneous Gap-Out for all phases.
4. Program phase 2 for Variable Initial and Gap Reduction.
5. Program phase 2 for Start Up In Green.
6. Program phase 2 for Yellow Flash.
7. The cabinet and controller are part of the Wilmington Signal System.

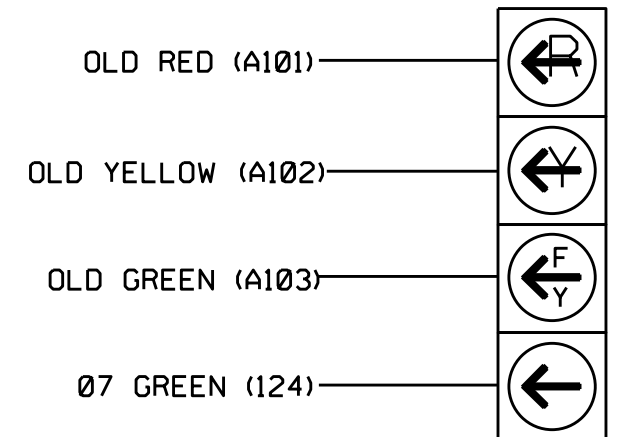
### SIGNAL HEAD HOOK-UP CHART

LOAD SWITCH NO.	S1	S2	S2P	S3	S4	S4P	S5	S6	S6P	S7	S8	S8P	S9	S10	S11	S12	S13	S14
PHASE	1	2	2 PED	3	4	4 PED	5	6	6 PED	7	8	8 PED	OLA	OLB	SPARE	OLC	OLD	SPARE
SIGNAL HEAD NO.	NU	21,22	*	NU	NU	NU	NU	NU	NU	71*	72,73	NU	NU	NU	NU	NU	71	NU
RED		128								122								
YELLOW		129																
GREEN		130																
RED ARROW																		A101
YELLOW ARROW											123							A102
FLASHING YELLOW ARROW																		A103
GREEN ARROW										124	124							

NU = Not Used  
 \* Denotes S2P-Y used to control firehouse preempt indicator lamp. See Sheet 3 of this electrical detail.  
 \* See pictorial of head wiring in detail below.

### 4 SECTION FYA PPLT SIGNAL WIRING DETAIL

(wire signal heads as shown)



NOTE: The sequence display for these signals requires special logic programming. See sheet 4 of 5 for programming instructions.

### INPUT FILE POSITION LAYOUT

(front view)

FILE	U	1	2	3	4	5	6	7	8	9	10	11	12	13	14
"I"	L	FS	∅ 2	FS	FS	FS	FS	FS	FS	SYS. DET. S1	FS	FS	FS	FS	FS
		2A	2B	FS	FS	FS	FS	FS	FS	FS	SYS. DET. S2	FS	FS	FS	FS
"J"	L	FS	FS	FS	FS	∅ 7	∅ 7	FS	FS	SYS. DET. S3	FS	FS	FS	FS	FS
		FS	FS	FS	FS	NOT USED	∅ 7	FS	FS	FS	FS	FS	FS	FS	FS

EX.: 1A, 2A, ETC. = LOOP NO.'S

FS = FLASH SENSE  
 ST = STOP TIME  
 PRE = PREEMPT

### EQUIPMENT INFORMATION

CONTROLLER.....2070L  
 CABINET .....McCain 332 with Aux  
 SOFTWARE .....ECONOLITE OASIS 3.02.20 OR LATER  
 CABINET MOUNT.....BASE  
 OUTPUT FILE POSITIONS..18 (12-STD, 6-AUX)  
 LOAD SWITCHES USED.....S2,S2P\*,S7,S13  
 PHASES USED.....2,7  
 OVERLAP A.....NOT USED  
 OVERLAP B.....NOT USED  
 OVERLAP C.....NOT USED  
 OVERLAP D.....2+7

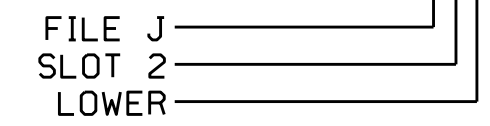
\* Denotes used for special operation. (EV Preemption Confirmation)

### INPUT FILE CONNECTION & PROGRAMMING CHART

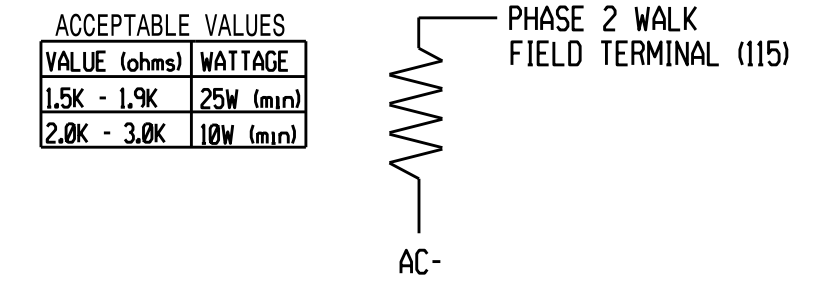
LOOP NO.	LOOP TERMINAL	INPUT FILE POS.	PIN NO.	INPUT ASSIGNMENT NO.	DETECTOR NO.	NEMA PHASE	CALL	EXTEND	FULL TIME DELAY	STRETCH TIME	DELAY TIME
2A	TB2-5,6	I2U	39	1	2	2	Y	Y	-	-	-
2B	TB2-7,8	I2L	43	5	12	2	Y	Y	-	-	-
* 7A	TB5-5,6	J5U	57	19	7	7	Y	Y	-	-	10
7B	TB5-9,10	J6U	42	4	8	7	Y	Y	-	-	15
7C	TB5-11,12	J6L	46	8	18	7	Y	Y	-	-	15
** S1	TB6-9,10	I9U	60	22	11	SYS	-	-	-	-	-
** S2	TB6-11,12	I9L	62	24	13	SYS	-	-	-	-	-
** S3	TB7-9,10	J9U	59	21	15	SYS	-	-	-	-	-

\* Disable delay on this loop during Alternate Phase operation (See Sheet 5 of 5).  
 \*\* System detector only. Remove the vehicle phase assigned to this detector in the default programming.

INPUT FILE POSITION LEGEND: J2L

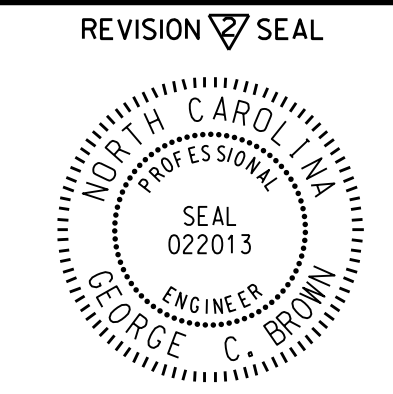


### LOAD RESISTOR INSTALLATION DETAIL



VALUE (ohms)	WATTAGE
1.5K - 1.9K	25W (min)
2.0K - 3.0K	10W (min)

THIS ELECTRICAL DETAIL IS FOR THE SIGNAL DESIGN: 03-1021  
 DESIGNED: March 2008  
 SEALED: June 19, 2008  
 REVISED: 7/20/2015



Electrical Detail - Sheet 1 of 5

Prepared in the Offices of:  750 Greenfield Pkwy, Garner, NC 27529	ELECTRICAL AND PROGRAMMING DETAILS FOR:	US 421 (Carolina Beach Road) at The Kings Hwy.	SEAL
	Division 3 New Hanover County Myrtle Grove	PLAN DATE: March 2008 PREPARED BY: R. Hinshaw	REVIEWED BY: JTR DATE: 2/6/09 DS: 02/04/2009 -MM- No change to Electrical detail. CES 6/14/15