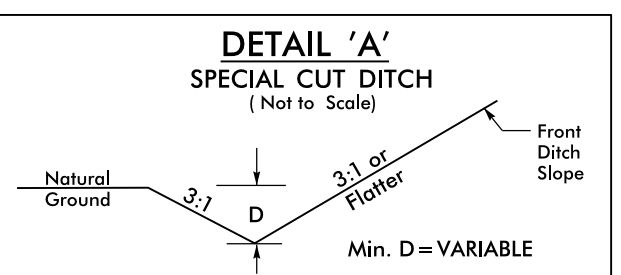
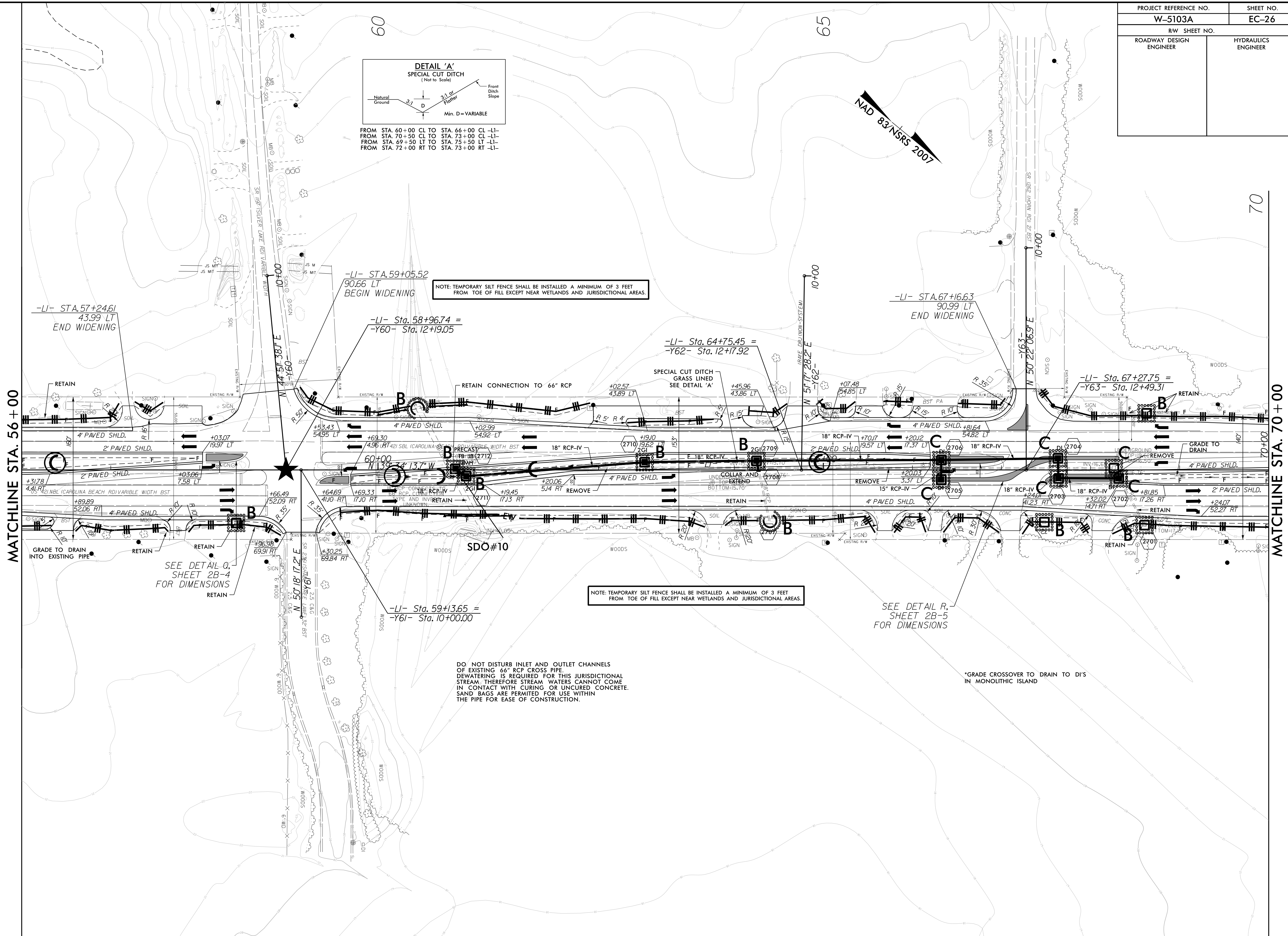


PROJECT REFERENCE NO. W-5103A	SHEET NO. EC-26
RW SHEET NO.	
ROADWAY DESIGN ENGINEER	HYDRAULICS ENGINEER

8/17/99

02 JUL 2016 13:41 NEW HANDOVER W-5103-41867-1.1.1 US 421 Median Crossover Relet (use this file) \ROADWAY\Proj\PLAN SHEETS\EROSION CONTROL\W5103.D03.EC-26.PSH.27.dgn

REVISIONS



FROM STA. 60+00 CL TO STA. 66+00 CL -LI-
FROM STA. 70+50 CL TO STA. 73+00 CL -LI-
FROM STA. 69+50 LT TO STA. 75+50 LT -LI-
FROM STA. 72+00 RT TO STA. 73+00 RT -LI-

NOTE: TEMPORARY SILT FENCE SHALL BE INSTALLED A MINIMUM OF 3 FEET FROM TOE OF FILL EXCEPT NEAR WETLANDS AND JURISDICTIONAL AREAS.

NOTE: TEMPORARY SILT FENCE SHALL BE INSTALLED A MINIMUM OF 3 FEET FROM TOE OF FILL EXCEPT NEAR WETLANDS AND JURISDICTIONAL AREAS.

DO NOT DISTURB INLET AND OUTLET CHANNELS OF EXISTING 66" RCP CROSS PIPE. DEWATERING IS REQUIRED FOR THIS JURISDICTIONAL STREAM. THEREFORE STREAM WATERS CANNOT COME IN CONTACT WITH CURING OR UNCURED CONCRETE. SAND BAGS ARE PERMITTED FOR USE WITHIN THE PIPE FOR EASE OF CONSTRUCTION.

SEE DETAIL R, SHEET 2B-5 FOR DIMENSIONS

*GRADE CROSSOVER TO DRAIN TO D'S IN MONOLITHIC ISLAND

NAD 83 NSRS 2007

70

MATCHLINE STA. 70+00

MATCHLINE STA. 56+00