

PROJECT REFERENCE NO. W-5103A	SHEET NO. EC-20
RW SHEET NO.	
ROADWAY DESIGN ENGINEER	HYDRAULICS ENGINEER

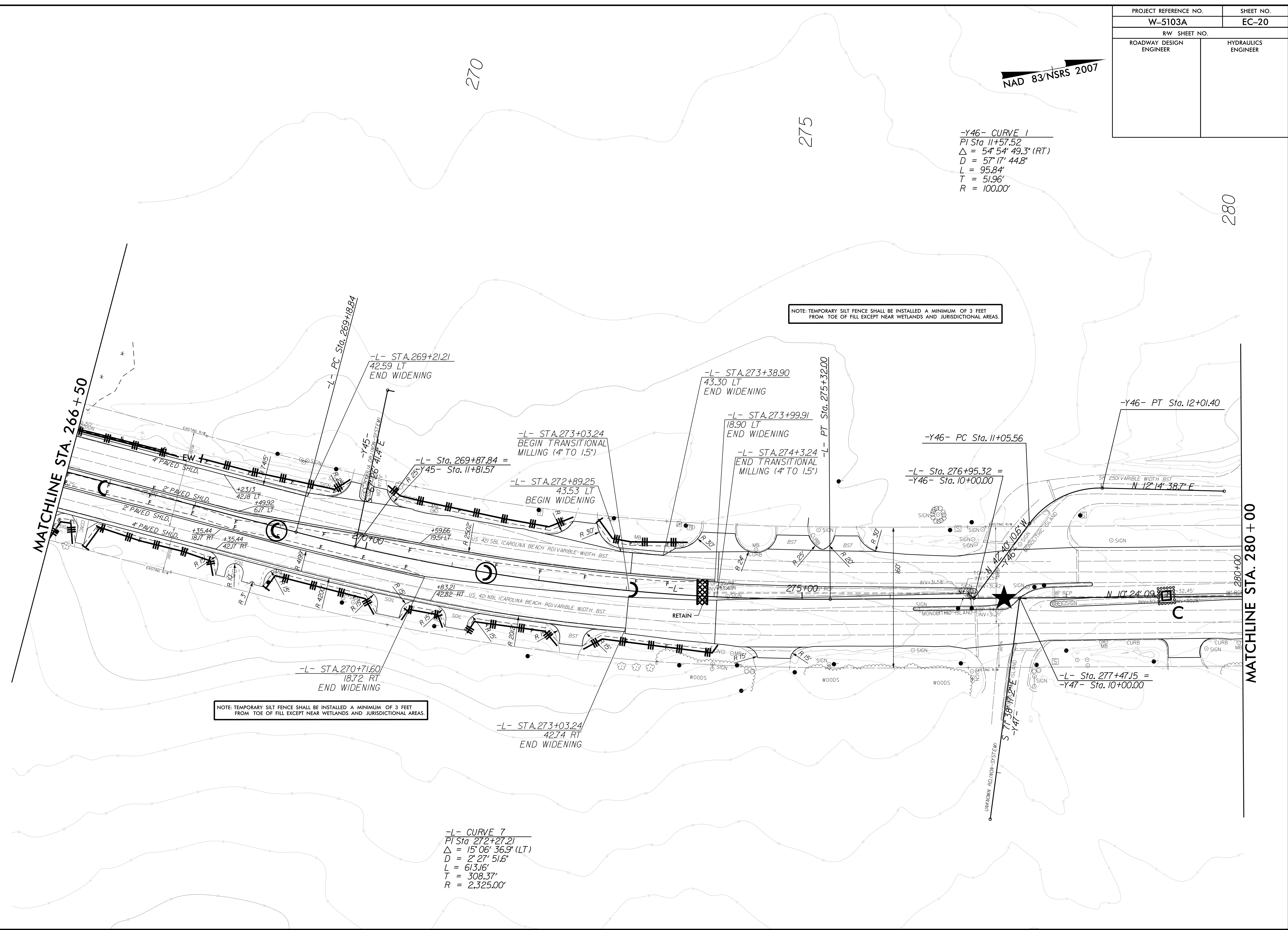
NAD 83/NSRS 2007

-Y46- CURVE 1
 PI Sta. 11+57.52
 $\Delta = 54^{\circ} 54' 49.3" (RT)$
 $D = 57^{\circ} 17' 44.8"$
 $L = 95.84'$
 $T = 51.96'$
 $R = 100.00'$

NOTE: TEMPORARY SILT FENCE SHALL BE INSTALLED A MINIMUM OF 3 FEET FROM TOE OF FILL EXCEPT NEAR WETLANDS AND JURISDICTIONAL AREAS.

NOTE: TEMPORARY SILT FENCE SHALL BE INSTALLED A MINIMUM OF 3 FEET FROM TOE OF FILL EXCEPT NEAR WETLANDS AND JURISDICTIONAL AREAS.

-L- CURVE 7
 PI Sta. 272+27.21
 $\Delta = 15^{\circ} 06' 36.9" (LT)$
 $D = 2^{\circ} 27' 51.6"$
 $L = 613.16'$
 $T = 308.37'$
 $R = 2,325.00'$



MATCHLINE STA. 266+50

MATCHLINE STA. 280+00

REVISIONS

8/17/99
 C:\JULY 2015\334 NEW HANDOVER\W-5103-41867-1.1.1\US 421 Median Crossover Relet (use this file)\ROADWAY\PROJ\PLAN SHEETS\EROSION CONTROL\W5103.D03.EC-20.PSH-21.dgn