

PROJECT REFERENCE NO.		SHEET NO.	
W-5103A		EC-16	
RW SHEET NO.			
ROADWAY DESIGN ENGINEER		HYDRAULICS ENGINEER	



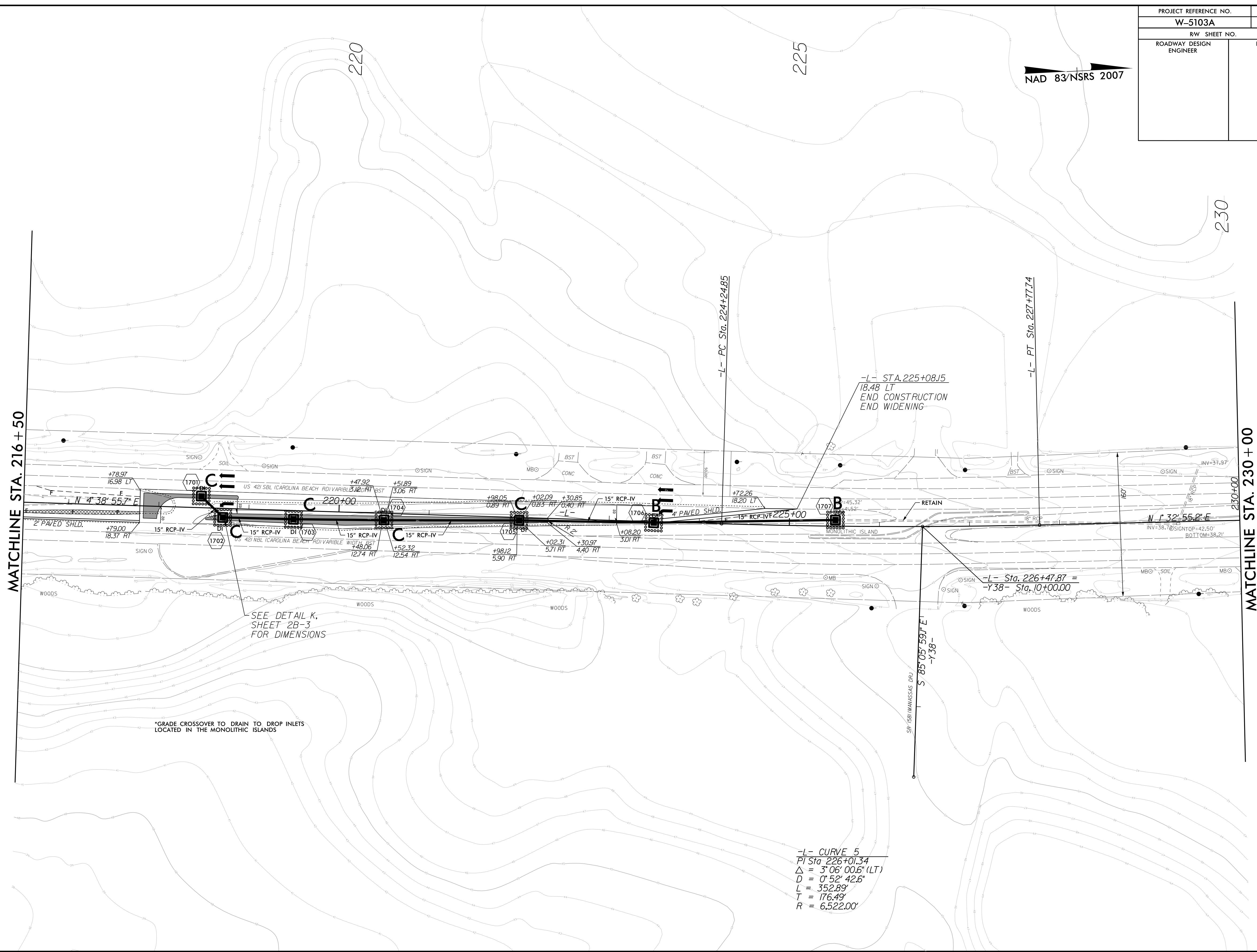
8/17/99

REVISIONS

C:\JULY 2016 1331 NEW HANDOVER\W-5103.41867.1.1.1\US 421 Median Crossover Relet (use this file)\ROADWAY\Plan SHEETS_EROSION_CONTROL\W5103.D03_EC.16_PSH_17.dgn

MATCHLINE STA. 216 + 50

MATCHLINE STA. 230 + 00



SEE DETAIL K, SHEET 2B-3 FOR DIMENSIONS

*GRADE CROSSOVER TO DRAIN TO DROP INLETS LOCATED IN THE MONOLITHIC ISLANDS

-L- CURVE 5
 PI Sta. 226+01.34
 $\Delta = 3^{\circ} 06' 00.6\" (LT)$
 $D = 0^{\circ} 52' 42.6\"$
 $L = 352.89'$
 $T = 176.49'$
 $R = 6,522.00'$

-L- STA. 225+08.15
 18.48 LT
 END CONSTRUCTION
 END WIDENING

-L- Sta. 226+47.87 =
 -Y38- Sta. 10+00.00

S 85° 05' 59\" E
 -Y38-

-L- PC Sta. 224+24.85

-L- PT Sta. 227+77.74

220

225

230

US 421 SBL (CAROLINA BEACH RD) VARIABLE WID. 10.0 FT
 2" PAVED SHLD.
 15" RCP-IV
 4" PAVED SHLD.
 15" RCP-IV
 MONOLITHIC ISLAND
 RETAIN
 WOODS
 SIGN
 SOIL
 MBO
 CONC
 BST
 DI (1703)
 DI (1704)
 DI (1705)
 INV=37.97
 INV=38.7
 SIGN OP=42.50'
 BOTTOM=38.21'