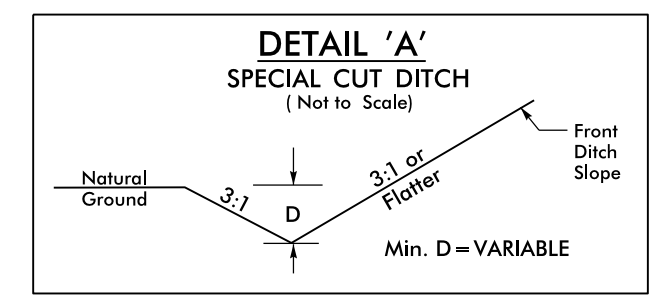


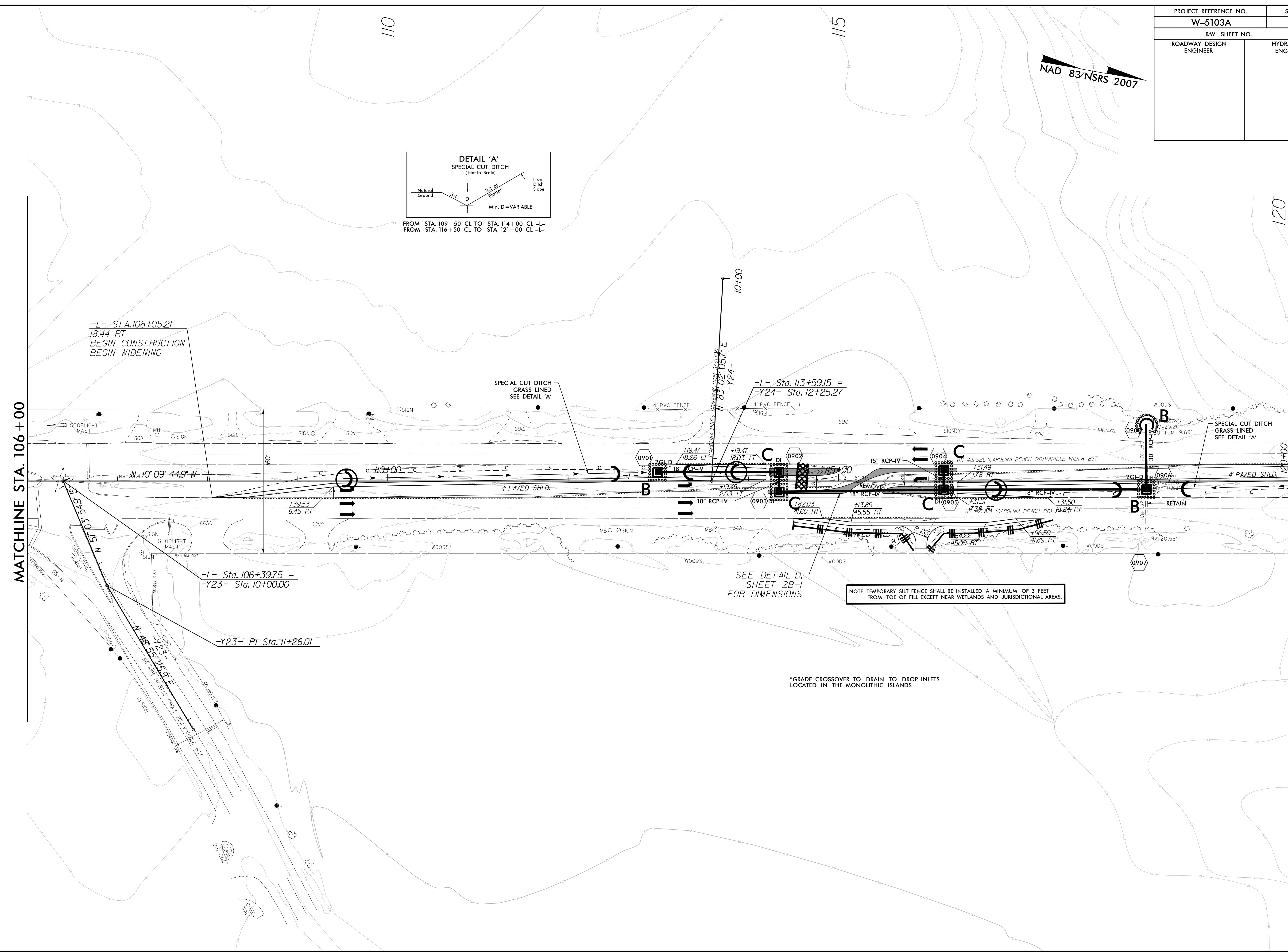
PROJECT REFERENCE NO. <b>W-5103A</b>	SHEET NO. <b>EC-8</b>
RW SHEET NO.	
ROADWAY DESIGN ENGINEER	HYDRAULICS ENGINEER

NAD 83/NSRS 2007



FROM STA. 109+50 CL TO STA. 114+00 CL -L-  
FROM STA. 116+50 CL TO STA. 121+00 CL -L-

REVISIONS  
 8/17/99  
 C:\PJ\2015\12 NEW HANDOVER\W-5103-41867-1.1.1\US 421 Median Crossover Relet (use this file)\ROADWAY\Plan SHEETS\EROSION CONTROL\W5103.D03.EC\_08\_PSH\_9.dgn  
 \$\$\$SUSSTENANCE\$\$\$



MATCHLINE STA. 106+00

MATCHLINE STA. 120+00

-L- STA. 108+05.21  
18.44 RT  
BEGIN CONSTRUCTION  
BEGIN WIDENING

SPECIAL CUT DITCH  
GRASS LINED  
SEE DETAIL 'A'

-L- Sta. 113+59.15 =  
-Y24- Sta. 12+25.27

-L- Sta. 106+39.75 =  
-Y23- Sta. 10+00.00

-Y23- PI Sta. 11+26.01

SEE DETAIL D,  
SHEET 2B-1  
FOR DIMENSIONS

NOTE: TEMPORARY SILT FENCE SHALL BE INSTALLED A MINIMUM OF 3 FEET FROM TOE OF FILL EXCEPT NEAR WETLANDS AND JURISDICTIONAL AREAS.

\*GRADE CROSSOVER TO DRAIN TO DROP INLETS LOCATED IN THE MONOLITHIC ISLANDS