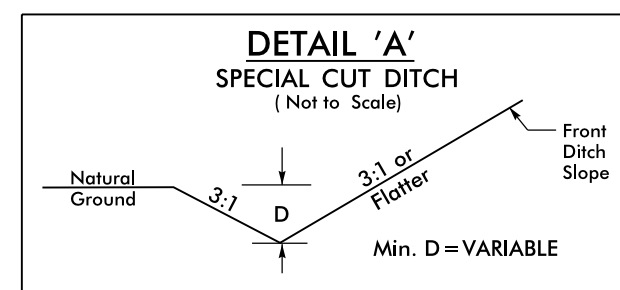


| | |
|---|--------------------------|
| PROJECT REFERENCE NO. W-5103A | SHEET NO. EC-5 |
| RW SHEET NO. | |
| ROADWAY DESIGN ENGINEER | HYDRAULICS ENGINEER |



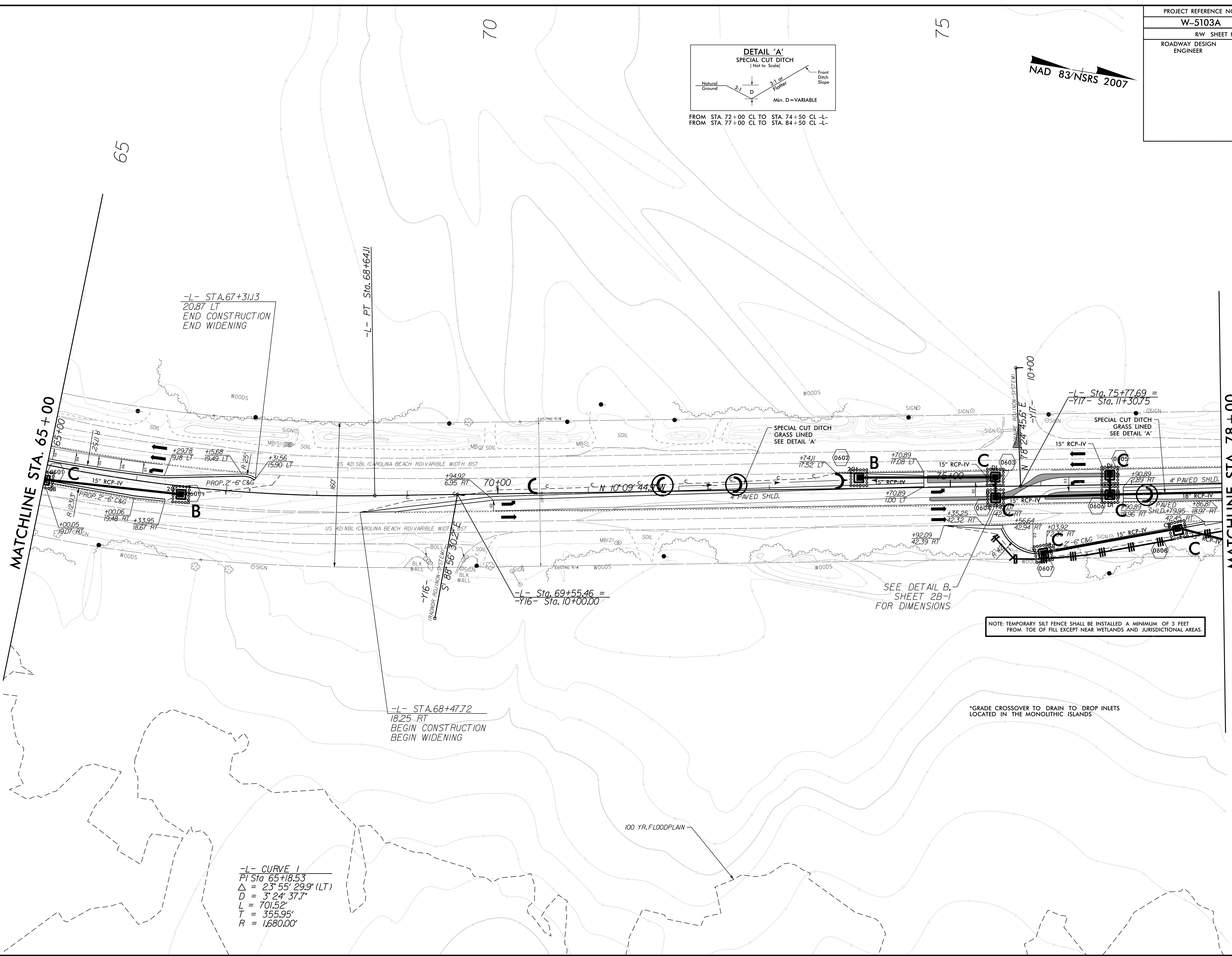
FROM STA. 72+00 CL TO STA. 74+50 CL -L-
FROM STA. 77+00 CL TO STA. 84+50 CL -L-

NAD 83/NSRS 2007

8/17/99

REVISIONS

C:\JULY 2015\HD_NEW_HANDOVER\W-5103_41867_1.1.1\US_421 Medion Crossover Relet (use this file)\ROADWAY\Pro\PLAN_SHEETS_EROSION_CONTROL\W5103.D03_EC_05_PSH_6.dgn
\$\$\$\$\$SUSTAINABLE\$\$\$\$\$



MATCHLINE STA. 65+00

MATCHLINE STA. 78+00

-L- STA. 67+31.13
20.87 LT
END CONSTRUCTION
END WIDENING

-L- PT Sta. 68+64.11

-L- STA. 68+47.72
18.25 RT
BEGIN CONSTRUCTION
BEGIN WIDENING

-L- Sta. 69+55.46 =
-Y16- Sta. 10+00.00

-L- Sta. 75+77.69 =
-Y17- Sta. 11+30.75

-L- CURVE 1
PI Sta 65+18.53
Δ = 23° 55' 29.9" (LT)
D = 3' 24' 37.7"
L = 701.52'
T = 355.95'
R = 1,680.00'

SEE DETAIL B,
SHEET 2B-1
FOR DIMENSIONS

NOTE: TEMPORARY SILT FENCE SHALL BE INSTALLED A MINIMUM OF 3 FEET FROM TOE OF FILL EXCEPT NEAR WETLANDS AND JURISDICTIONAL AREAS.

*GRADE CROSSOVER TO DRAIN TO DROP INLETS LOCATED IN THE MONOLITHIC ISLANDS

100 YR. FLOODPLAIN