

PROJECT REFERENCE NO.	SHEET NO.
W-5103A	EC-3
RW SHEET NO.	HYDRAULICS ENGINEER
ROADWAY DESIGN ENGINEER	

NAD 83/NSRS 2007

-Y1- CURVE 1  
 PI Sta 19+35.13  
 $\Delta = 90^{\circ} 02' 42.4" (RT)$   
 $D = 104' 10" 26.9'$   
 $L = 86.44'$   
 $T = 55.04'$   
 $R = 55.00'$

NOTE: TEMPORARY SILT FENCE SHALL BE INSTALLED A MINIMUM OF 3 FEET FROM TOE OF FILL EXCEPT NEAR WETLANDS AND JURISDICTIONAL AREAS.

-Y1- STA.17+70.40  
 BEGIN PROJECT  
 BEGIN CONSTRUCTION  
 BEGIN WIDENING  
 $N = 116,259.0101$   
 $E = 2,333,557.7808$

-Y1- PC Sta. 18+80.08

+22.40 -Y1- 18.61 LT  
 -Y1- PT Sta. 19+66.52

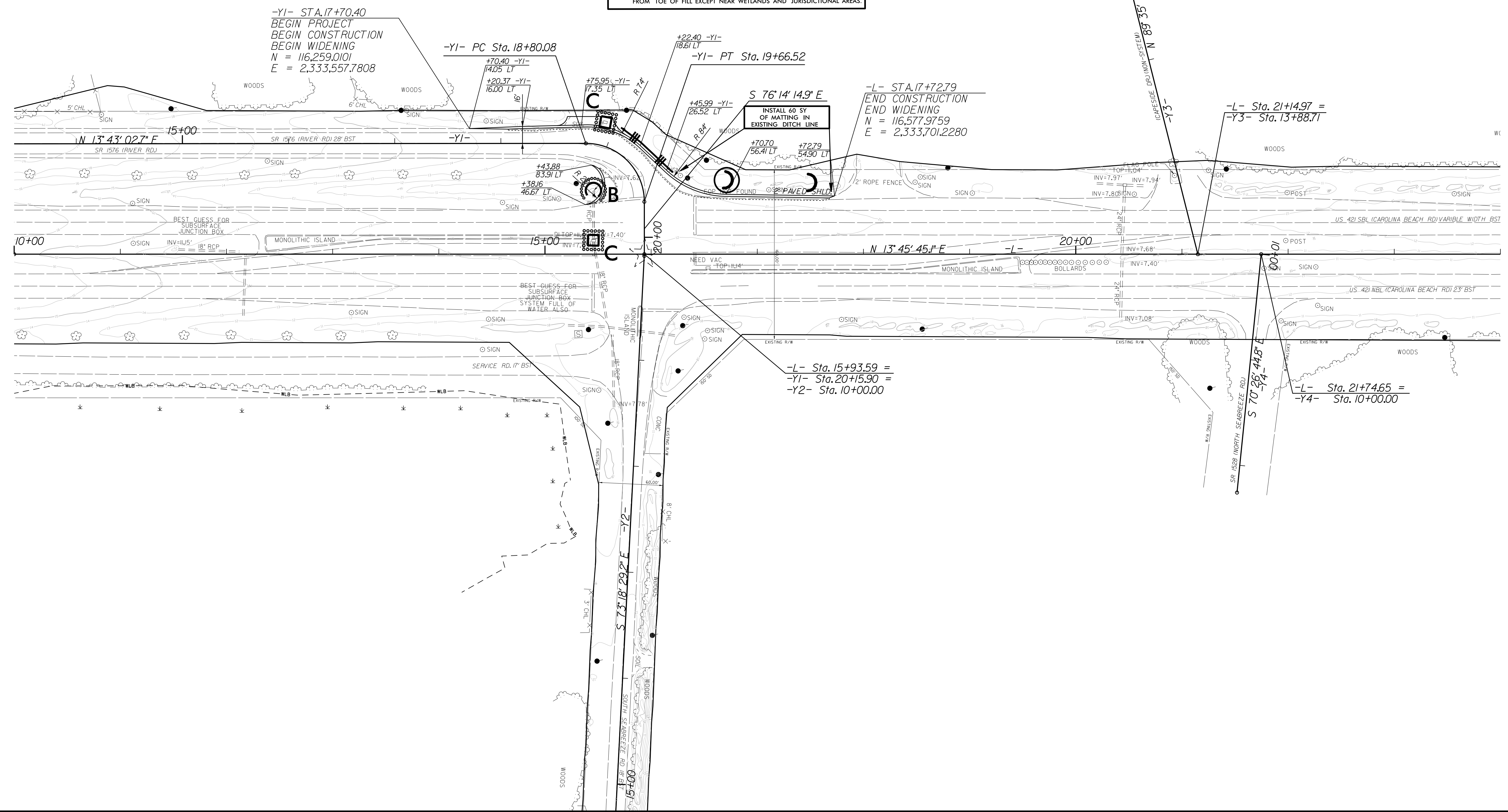
S 76° 14' 14.9" E

-L- STA.17+72.79  
 END CONSTRUCTION  
 END WIDENING  
 $N = 116,577.9759$   
 $E = 2,333,701.2280$

-L- Sta. 21+14.97 =  
 -Y3- Sta. 13+88.71

-L- Sta. 15+93.59 =  
 -Y1- Sta. 20+15.90 =  
 -Y2- Sta. 10+00.00

-L- Sta. 21+74.65 =  
 -Y4- Sta. 10+00.00



REVISIONS

8/17/99

C:\PROJ\2016\1317\_NEW\_HANDOVER\W-5103A\1867.1.1.1\US\_421\_Median\_Crossover\_Relet (use this file)\ROADWAY\PLAN SHEETS\_EROSION\_CONTROL\W5103A.D03\_EC\_03\_PSH\_4.dgn