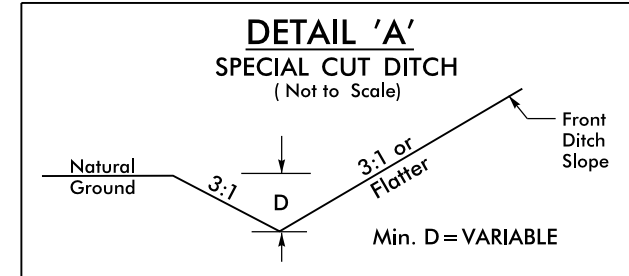
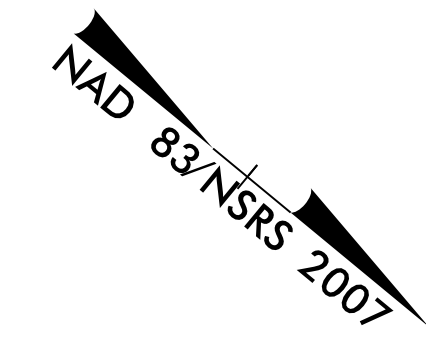


70

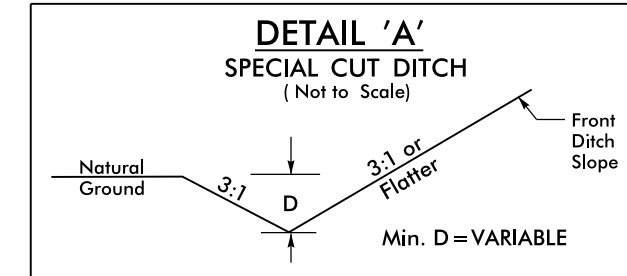
75

80

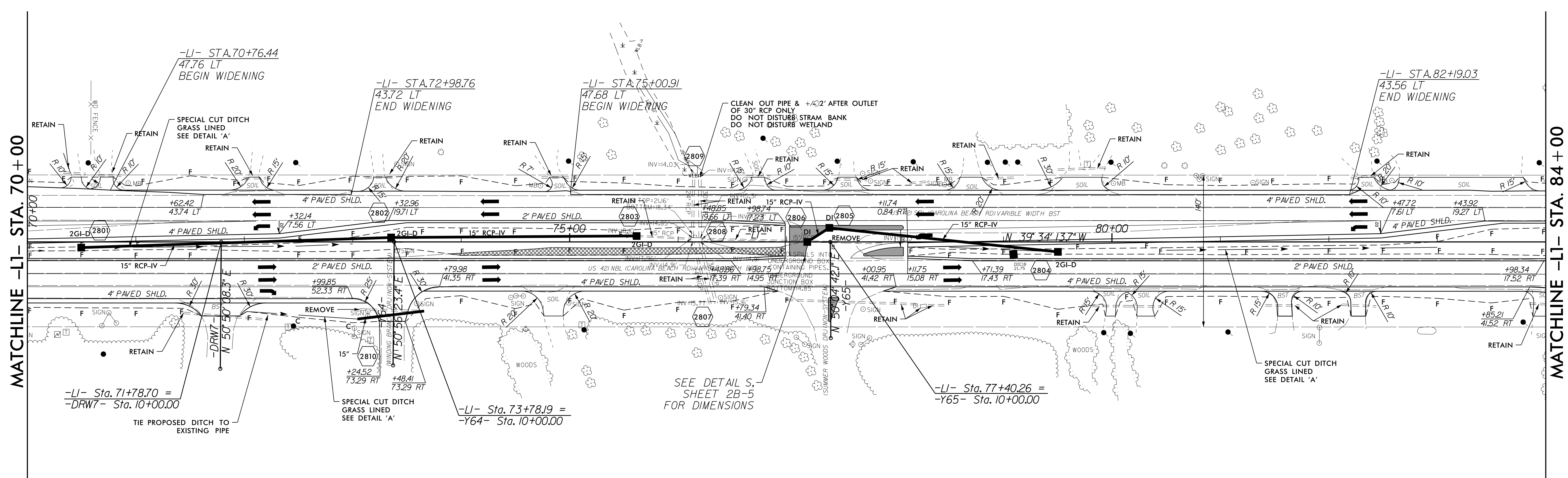
PROJECT REFERENCE NO. <b>W-5103A</b>	SHEET NO. <b>28</b>
RW SHEET NO.	
ROADWAY DESIGN ENGINEER <b>DAVID B. BOWMAN</b> SEAL 037439	HYDRAULICS ENGINEER <b>DAVID B. BOWMAN</b> SEAL 039745
8/12/2015   2:55 PM PT	8/13/2015   9:00 AM ET



FROM STA. 60+00 CL TO STA. 66+00 CL -LI-  
 FROM STA. 70+50 CL TO STA. 73+00 CL -LI-  
 FROM STA. 72+00 RT TO STA. 73+00 RT -LI-



FROM STA. 78+50 CL TO STA. 83+00 CL -LI-  
 FROM STA. 86+25 RT TO STA. 87+50 RT -LI-



REVISIONS

\*GRADE CROSSOVER TO DRAIN TO DI'S  
 IN MONOLITHIC ISLAND