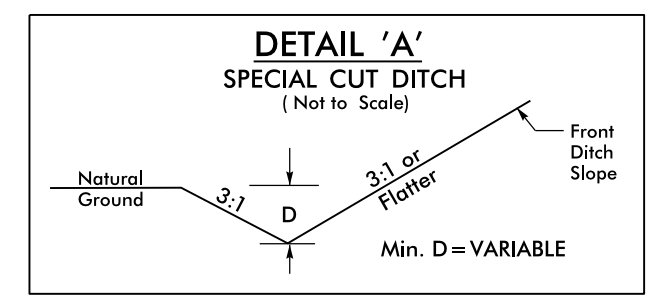
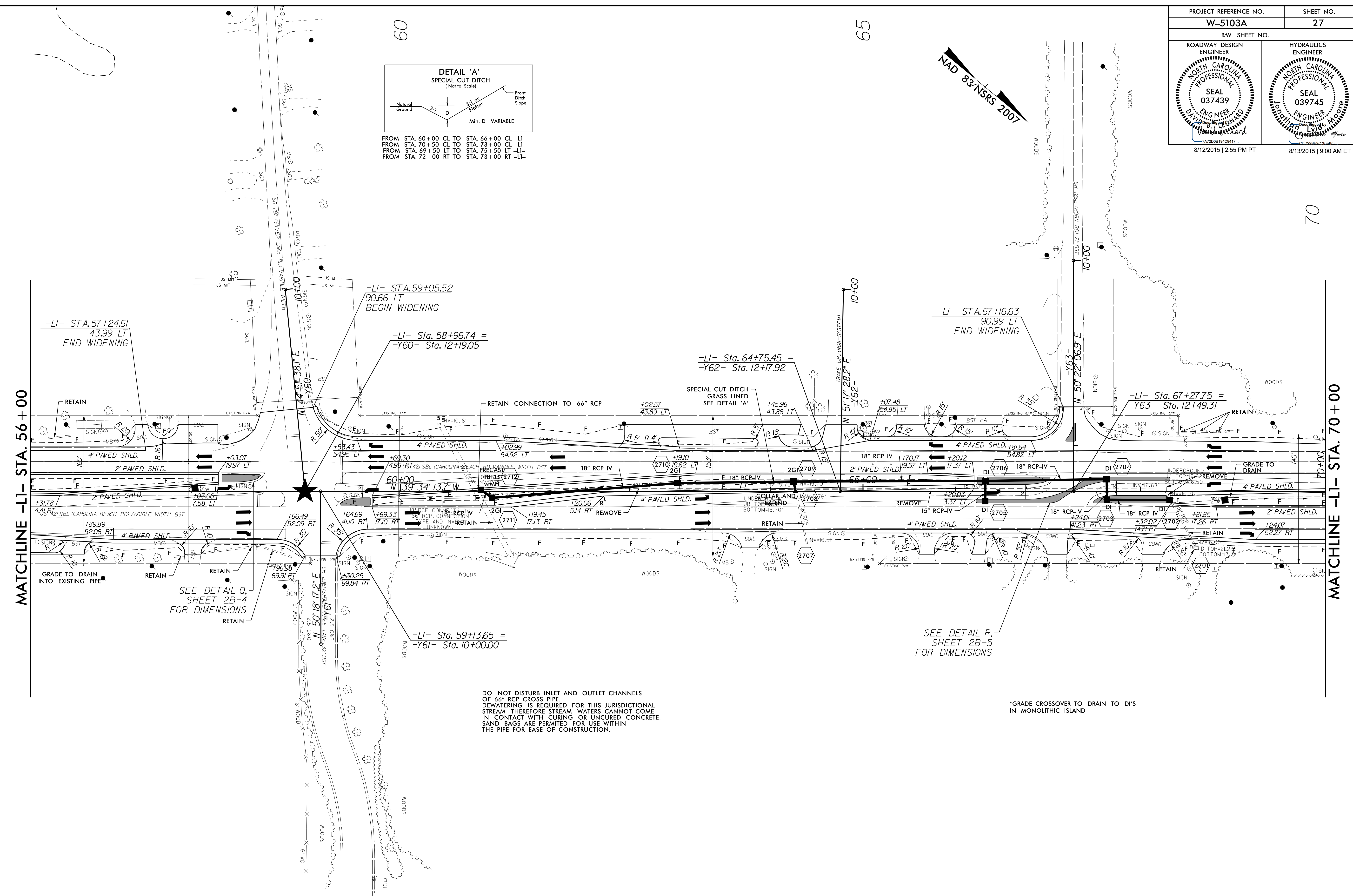
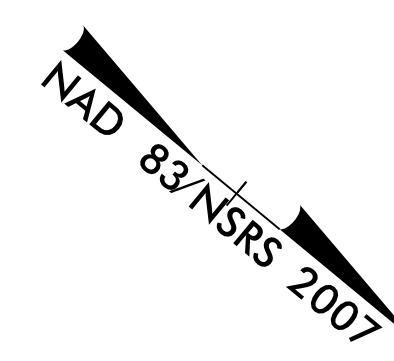


PROJECT REFERENCE NO. W-5103A	SHEET NO. 27
RW SHEET NO.	
ROADWAY DESIGN ENGINEER NORTH CAROLINA PROFESSIONAL SEAL 037439	HYDRAULICS ENGINEER NORTH CAROLINA PROFESSIONAL SEAL 039745
8/12/2015 2:55 PM PT	
8/13/2015 9:00 AM ET	



FROM STA. 60+00 CL TO STA. 66+00 CL -LI-
 FROM STA. 70+50 CL TO STA. 73+00 CL -LI-
 FROM STA. 69+50 LT TO STA. 75+50 LT -LI-
 FROM STA. 72+00 RT TO STA. 73+00 RT -LI-



MATCHLINE -LI- STA. 56+00

MATCHLINE -LI- STA. 70+00

DO NOT DISTURB INLET AND OUTLET CHANNELS OF 66" RCP CROSS PIPE. DEWATERING IS REQUIRED FOR THIS JURISDICTIONAL STREAM THEREFORE STREAM WATERS CANNOT COME IN CONTACT WITH CURING OR UNCURED CONCRETE. SAND BAGS ARE PERMITTED FOR USE WITHIN THE PIPE FOR EASE OF CONSTRUCTION.

SEE DETAIL R, SHEET 2B-5 FOR DIMENSIONS

*GRADE CROSSOVER TO DRAIN TO D'S IN MONOLITHIC ISLAND

REVISIONS

8/17/99

I:\AUGUST 2015\1511\NEW HANDOVER\W-5103-41867-1.1.1\IS 421 Median Crossover Relet (use this file)\ROADWAY\Proj\Plan_Sheets\W5103A-D03_Rdy_PSH_L27.dgn