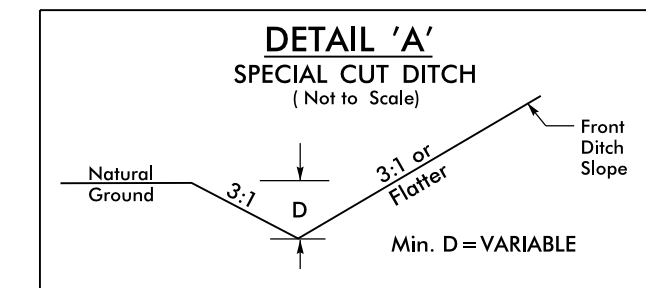


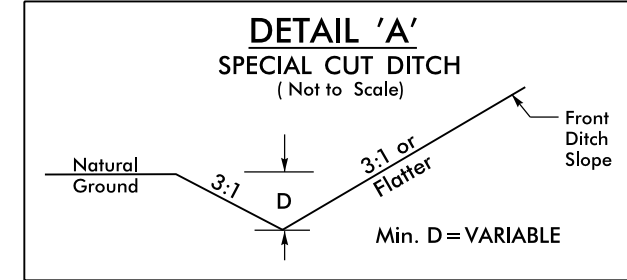
8/17/99

10 AUG 2015 10:41 AM NEW HANDOVER W-5103-41867-1.1.1 US 421 Median Crossover Relet (use this file) \ROADWAY\Proj\Plan\_Sheets\W5103A-D03\_PSH\_12.dgn

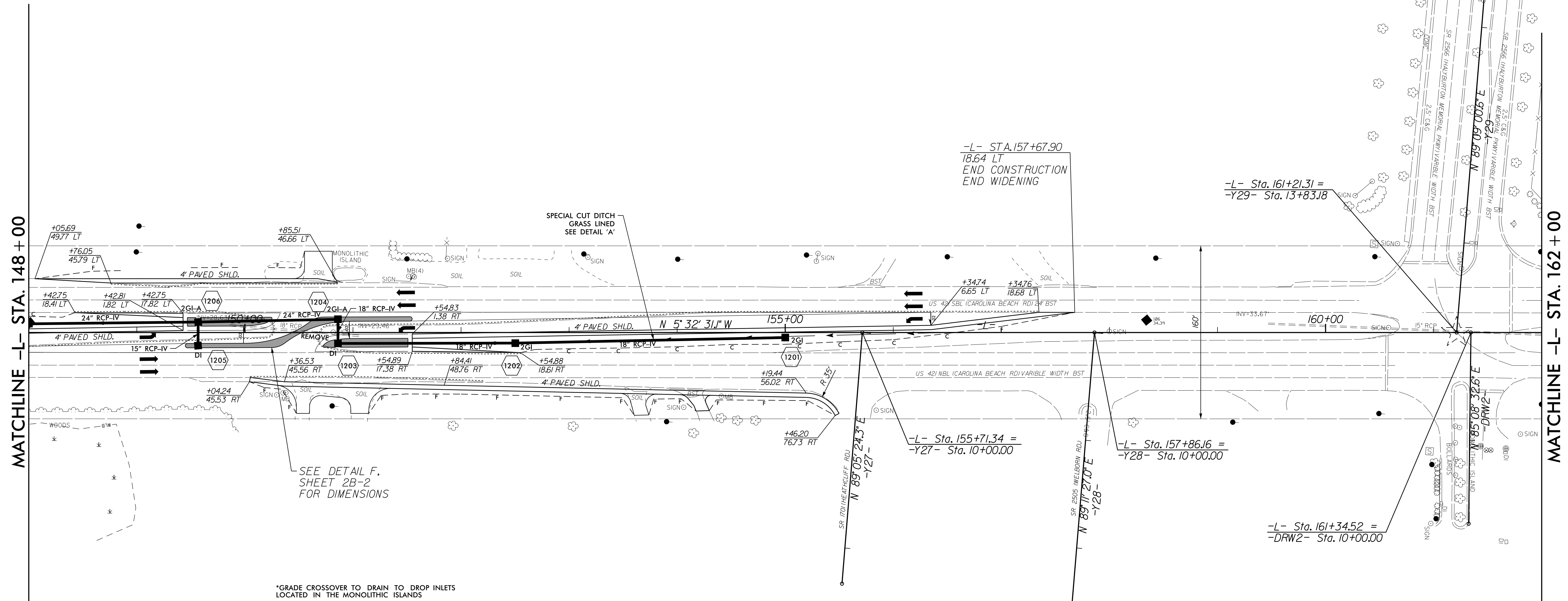
REVISIONS



FROM STA. 138+50 CL TO STA. 143+50 CL -L-  
 FROM STA. 143+70 CL TO STA. 149+00 CL -L-



FROM STA. 152+00 CL TO STA. 156+50 CL -L-



\*GRADE CROSSOVER TO DRAIN TO DROP INLETS  
 LOCATED IN THE MONOLITHIC ISLANDS

SEE DETAIL F,  
 SHEET 2B-2  
 FOR DIMENSIONS

SPECIAL CUT DITCH  
 GRASS LINED  
 SEE DETAIL 'A'

-L- STA. 157+67.90  
 18.64 LT  
 END CONSTRUCTION  
 END WIDENING

-L- Sta. 161+21.31 =  
 -Y29- Sta. 13+83.18

-L- Sta. 155+71.34 =  
 -Y27- Sta. 10+00.00

-L- Sta. 157+86.16 =  
 -Y28- Sta. 10+00.00

-L- Sta. 161+34.52 =  
 -DRW2- Sta. 10+00.00

PROJECT REFERENCE NO. <b>W-5103A</b>	SHEET NO. <b>12</b>
RW SHEET NO.	
ROADWAY DESIGN ENGINEER	HYDRAULICS ENGINEER
8/12/2015   2:55 PM PT	8/13/2015   9:00 AM ET



MATCHLINE -L- STA. 148+00

MATCHLINE -L- STA. 162+00

150

155

160