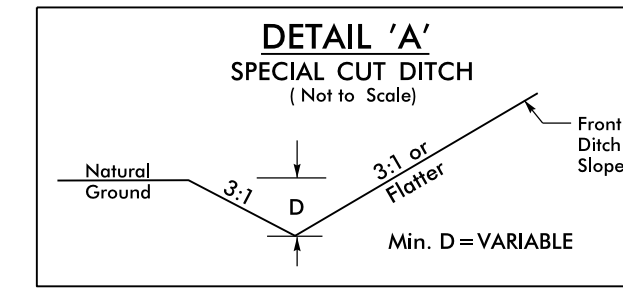


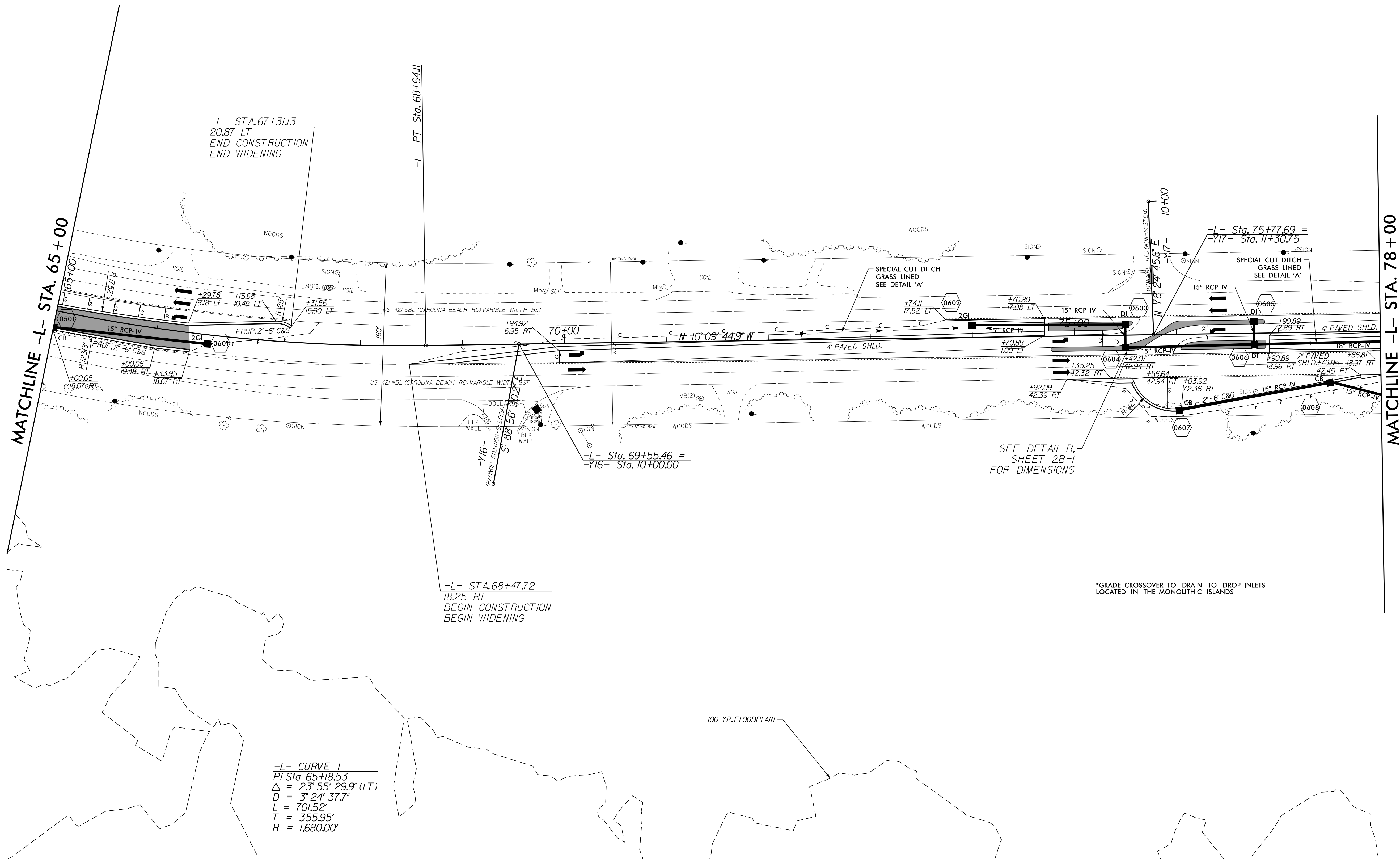
REVISIONS

PROJECT REFERENCE NO. W-5103A	SHEET NO. 6
RW SHEET NO.	
ROADWAY DESIGN ENGINEER NORTH CAROLINA PROFESSIONAL SEAL 037439 DAVID B. EDWARDS	HYDRAULICS ENGINEER NORTH CAROLINA PROFESSIONAL SEAL 039745 LARRY E. MOUNTS
8/12/2015 2:55 PM PT	8/13/2015 9:00 AM ET



FROM STA. 72+00 CL TO STA. 74+50 CL -L-
FROM STA. 77+00 CL TO STA. 84+50 CL -L-

NAD 83/NSRS 2007



MATCHLINE -L- STA. 65+00

MATCHLINE -L- STA. 78+00

-L- STA. 67+31.13
20.87 LT
END CONSTRUCTION
END WIDENING

-L- PT Sta. 68+64.11

-L- STA. 68+47.72
18.25 RT
BEGIN CONSTRUCTION
BEGIN WIDENING

-L- Sta. 69+55.46 =
-Y16- Sta. 10+00.00

-L- Sta. 75+77.69 =
-Y17- Sta. 11+30.75

SEE DETAIL B,
SHEET 2B-1
FOR DIMENSIONS

*GRADE CROSSOVER TO DRAIN TO DROP INLETS
LOCATED IN THE MONOLITHIC ISLANDS

-L- CURVE 1
PI Sta 65+18.53
 $\Delta = 23^\circ 55' 29.9''$ (LT)
D = 3' 24' 37.7"
L = 701.52'
T = 355.95'
R = 1,680.00'

100 YR. FLOODPLAIN