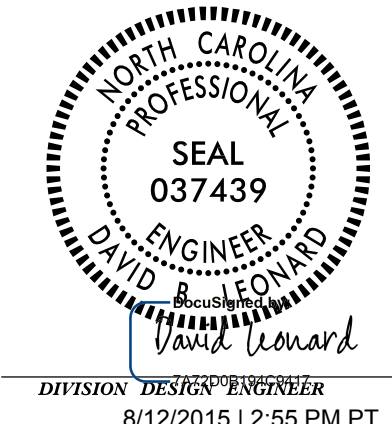


STATE OF NORTH CAROLINA
DIVISION OF HIGHWAYS

ALIGNMENT DESCRIPTIONS



Chain Y35 contains:
1081 1082

Beginning chain Y35 description

Point 1081 N 133,794.6504 E 2,332,568.1586 Sta 10+00.00

Course from 1081 to 1082 N 82° 40' 01.75" E Dist 283.9697

Point 1082 N 133,830.8943 E 2,332,849.8059 Sta 12+83.97

Ending chain Y35 description

Chain Y36 contains:
1083 1084

Beginning chain Y36 description

Point 1083 N 134,024.9572 E 2,332,549.3583 Sta 10+00.00

Course from 1083 to 1084 N 84° 18' 58.57" E Dist 280.3024

Point 1084 N 134,052.7176 E 2,332,828.2827 Sta 12+80.30

Ending chain Y36 description

Chain Y37 contains:
1085 1086

Beginning chain Y37 description

Point 1085 N 134,903.1868 E 2,332,490.2716 Sta 10+00.00

Course from 1085 to 1086 N 84° 01' 11.12" E Dist 273.3020

Point 1086 N 134,931.6610 E 2,332,762.0863 Sta 12+73.30

Ending chain Y37 description

Chain Y38 contains:
1087 1088

Beginning chain Y38 description

Point 1087 N 137,117.6787 E 2,332,925.8613 Sta 10+00.00

Course from 1087 to 1088 S 85° 05' 59.14" E Dist 278.0927

Point 1088 N 137,093.9237 E 2,333,202.9376 Sta 12+78.09

Ending chain Y38 description

Chain Y39 contains:
1089 1090

Beginning chain Y39 description

Point 1089 N 137,585.2927 E 2,332,689.6295 Sta 10+00.00

Course from 1089 to 1090 S 85° 51' 10.48" E Dist 250.3335

Point 1090 N 137,567.1893 E 2,332,939.3076 Sta 12+50.33

Ending chain Y39 description

Chain Y40 contains:
1091 1092

Beginning chain Y40 description

Point 1091 N 137,594.9741 E 2,332,940.0588 Sta 10+00.00

Course from 1091 to 1092 S 85° 37' 28.09" E Dist 239.6142

Point 1092 N 137,576.6932 E 2,333,178.9746 Sta 12+39.61

Ending chain Y40 description

Chain Y41 contains:
1093 1094

Beginning chain Y41 description

Point 1093 N 138,031.6634 E 2,332,718.6357 Sta 10+00.00

Course from 1093 to 1094 S 85° 49' 56.49" E Dist 233.3879

Point 1094 N 138,014.7020 E 2,332,951.4064 Sta 12+33.39

Ending chain Y41 description

Chain Y42 contains:
1097 1098

Beginning chain Y42 description

Point 1097 N 138,693.5526 E 2,332,848.0604 Sta 10+00.00

Course from 1097 to 1098 N 79° 35' 33.26" E Dist 250.5990

Point 1098 N 138,738.8225 E 2,333,094.5365 Sta 12+50.60

Ending chain Y42 description

Chain Y43 contains:
1103 1104

Beginning chain Y43 description

Point 1103 N 139,755.5868 E 2,333,439.6733 Sta 10+00.00

Course from 1103 to 1104 S 66° 45' 33.64" E Dist 125.3740

Point 1104 N 139,706.1150 E 2,333,554.8740 Sta 11+25.37

Ending chain Y43 description

Chain Y44 contains:
1105 1106

Beginning chain Y44 description

Point 1105 N 140,077.0214 E 2,333,731.8892 Sta 10+00.00

Course from 1105 to 1106 S 64° 14' 45.29" E Dist 115.0979

Point 1106 N 140,027.0103 E 2,333,835.5541 Sta 11+15.10

Ending chain Y44 description

Chain Y45 contains:
1107 1108

Beginning chain Y45 description

Point 1107 N 141,245.2807 E 2,334,087.3887 Sta 10+00.00

Course from 1107 to 1108 S 67° 26' 41.39" E Dist 181.5683

Point 1108 N 141,175.6361 E 2,334,255.0689 Sta 11+81.57

Ending chain Y45 description

Chain Y46 contains:
1111 CUR Y46CI 1109

Beginning chain Y46 description

Point 1111 N 141,855.1696 E 2,334,444.2653 Sta 10+00.00

Course from 1111 to PC Y46CI N 42° 40' 10.58" W Dist 105.5550

Curve Data			

Curve Y46CI			
P.I. Station	11+57.52 N	141,970.9870 E	2,334,337.5056
Delta	=	54° 54' 49.32" (RT)	
Degree	=	57° 17' 44.81"	
Tangent	=	51.9610	
Length	=	95.8425	
Radius	=	100.0000	
External	=	12.6940	
Long Chord	=	92.2161	
Mid.Ord.	=	11.2642	
P.C. Station	11+05.56 N	141,932.7814 E	2,334,372.7233
P.T. Station	12+01.40 N	142,021.7661 E	2,334,348.5254
C.C.	N	142,000.5584 E	2,334,446.2507
Back	= N	42° 40' 10.58" W	
Ahead	= N	12° 14' 38.74" E	
Chord Bear	= N	15° 12' 45.92" W	

Course from PT Y46CI to 1109 N 12° 14' 38.74" E Dist 138.4304

Point 1109 N 142,157.0476 E 2,334,377.8833 Sta 13+39.83

Ending chain Y46 description

5/28/99
03 AUG 2015 10:47 AM NEW HANDOVER W-5103A-41867-1.1.LUS 421 Median Crossover Relet (use this file)\ROADWAY\Proj\Plan_Sheets\W5103A-D03_Rdy_ID-5.dgn