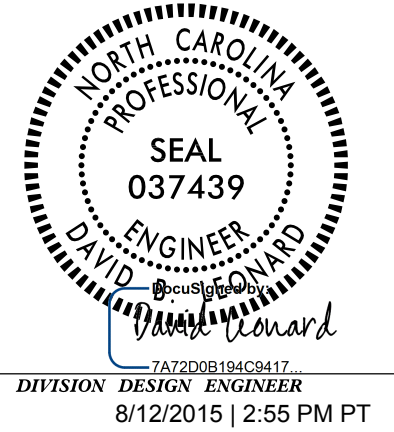


STATE OF NORTH CAROLINA
DIVISION OF HIGHWAYS
ALIGNMENT DESCRIPTIONS



Chain Y24 contains:
1049 1050

Beginning chain Y24 description

```

Point 1049      N      125,921.9735 E      2,333,804.0422 Sta      10+00.00
Course from 1049 to 1050 N 83° 02' 05.72" E Dist 225.2662
Point 1050      N      125,949.2903 E      2,334,027.6460 Sta      12+25.27
  
```

Ending chain Y24 description

Chain Y25 contains:
1053 CUR Y25C1 1055

Beginning chain Y25 description

```

Point 1053      N      127,401.0971 E      2,333,514.0474 Sta      10+00.00
Course from 1053 to PC Y25C1 S 74° 09' 07.81" E Dist 55.8371
  
```

Curve Data

```

Curve Y25C1
P.I. Station    10+98.35 N      127,374.2395 E      2,333,608.6585
Delta          =      31° 38' 49.17" (LT)
Degree         =      38° 11' 49.87"
Tangent        =      42.5122
Length         =      82.8516
Radius         =      150.0000
External       =      5.9079
Long Chord     =      81.8024
Mid.Ord.       =      5.6841
P.C. Station    10+55.84 N      127,385.8489 E      2,333,567.7622
P.T. Station    11+38.69 N      127,385.8142 E      2,333,649.5646
C.C.           N      127,530.1475 E      2,333,608.7247
Back           = S 74° 09' 07.81" E
Ahead          = N 74° 12' 03.02" E
Chord Bear     = S 89° 58' 32.39" E
  
```

Course from PT Y25C1 to 1055 N 74° 12' 03.02" E Dist 89.0108

```

Point 1055      N      127,410.0488 E      2,333,735.2128 Sta      12+27.70
  
```

Ending chain Y25 description

Chain Y26 contains:
1056 1057

Beginning chain Y26 description

```

Point 1056      N      129,054.6304 E      2,333,053.4399 Sta      10+00.00
Course from 1056 to 1057 N 88° 38' 06.93" E Dist 259.2744
Point 1057      N      129,060.8056 E      2,333,312.6407 Sta      12+59.27
  
```

Ending chain Y26 description

Chain Y27 contains:
1058 1059

Beginning chain Y27 description

```

Point 1058      N      130,069.1703 E      2,333,214.8005 Sta      10+00.00
Course from 1058 to 1059 N 89° 05' 24.28" E Dist 233.0723
Point 1059      N      130,072.8716 E      2,333,447.8435 Sta      12+33.07
  
```

Ending chain Y27 description

Chain Y28 contains:
1060 1061

Beginning chain Y28 description

```

Point 1060      N      130,282.9876 E      2,333,194.0542 Sta      10+00.00
Course from 1060 to 1061 N 89° 11' 27.01" E Dist 306.9980
Point 1061      N      130,287.3230 E      2,333,501.0215 Sta      13+07.00
  
```

Ending chain Y28 description

Chain Y29 contains:
1062 1063

Beginning chain Y29 description

```

Point 1062      N      130,610.8813 E      2,332,778.5525 Sta      10+00.00
Course from 1062 to 1063 N 89° 09' 00.57" E Dist 383.1773
Point 1063      N      130,616.5646 E      2,333,161.6877 Sta      13+83.18
  
```

Ending chain Y29 description

Chain Y30 contains:
1066 1067

Beginning chain Y30 description

```

Point 1066      N      131,140.0227 E      2,332,800.8443 Sta      10+00.00
Course from 1066 to 1067 N 89° 03' 04.91" E Dist 309.5980
Point 1067      N      131,145.1484 E      2,333,110.3999 Sta      13+09.60
  
```

Ending chain Y30 description

Chain Y31 contains:
1071 1072

Beginning chain Y31 description

```

Point 1071      N      131,692.8811 E      2,333,057.2542 Sta      10+00.00
Course from 1071 to 1072 N 83° 21' 35.59" E Dist 262.0280
Point 1072      N      131,723.1801 E      2,333,317.5245 Sta      12+62.03
  
```

Ending chain Y31 description

Chain Y32 contains:
1075 1076

Beginning chain Y32 description

```

Point 1075      N      132,329.0382 E      2,332,763.1745 Sta      10+00.00
Course from 1075 to 1076 N 88° 38' 05.47" E Dist 231.8841
Point 1076      N      132,334.5626 E      2,332,994.9928 Sta      12+31.88
  
```

Ending chain Y32 description

Chain Y33 contains:
1077 1078

Beginning chain Y33 description

```

Point 1077      N      132,484.5135 E      2,332,980.4433 Sta      10+00.00
Course from 1077 to 1078 N 82° 48' 08.21" E Dist 97.9758
Point 1078      N      132,496.7893 E      2,333,077.6470 Sta      10+97.98
  
```

Ending chain Y33 description

Chain Y34 contains:
1079 1080

Beginning chain Y34 description

```

Point 1079      N      133,344.8194 E      2,332,600.2583 Sta      10+00.00
Course from 1079 to 1080 N 85° 33' 55.95" E Dist 295.3790
Point 1080      N      133,367.6577 E      2,332,894.7530 Sta      12+95.38
  
```

Ending chain Y34 description