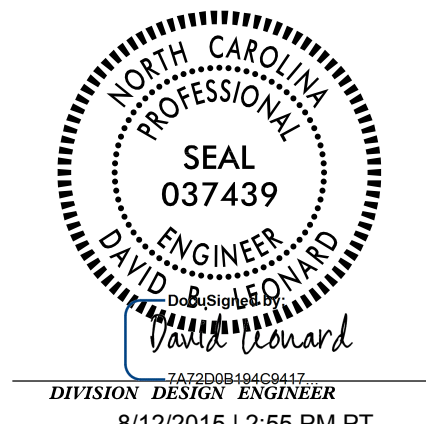


STATE OF NORTH CAROLINA
DIVISION OF HIGHWAYS
ALIGNMENT DESCRIPTIONS



Chain Y13 contains:
1026 1027

Beginning chain Y13 description

Point 1026 N 120,708.6360 E 2,334,439.7321 Sta 10+00.00

Course from 1026 to 1027 N 88° 57' 05.03" E Dist 331.2799

Point 1027 N 120,714.6986 E 2,334,770.9565 Sta 13+31.28

Ending chain Y13 description

Chain Y14 contains:
1028 1029

Beginning chain Y14 description

Point 1028 N 120,708.6229 E 2,334,769.4684 Sta 10+00.00

Course from 1028 to 1029 N 87° 19' 54.36" E Dist 357.4025

Point 1029 N 120,725.2609 E 2,335,126.4834 Sta 13+57.40

Ending chain Y14 description

Chain Y15 contains:
1030 1031

Beginning chain Y15 description

Point 1030 N 121,024.5085 E 2,334,655.1990 Sta 10+00.00

Course from 1030 to 1031 S 70° 18' 54.22" E Dist 181.4863

Point 1031 N 120,963.3753 E 2,334,826.0791 Sta 11+81.49

Ending chain Y15 description

Chain Y16 contains:
1032 1033

Beginning chain Y16 description

Point 1032 N 121,614.6905 E 2,334,804.6319 Sta 10+00.00

Course from 1032 to 1033 S 88° 56' 30.19" E Dist 139.2646

Point 1033 N 121,612.1183 E 2,334,943.8728 Sta 11+39.26

Ending chain Y16 description

Chain Y16 contains:
1032 1033

Beginning chain Y16 description

Point 1032 N 121,614.6905 E 2,334,804.6319 Sta 10+00.00

Course from 1032 to 1033 S 88° 56' 30.19" E Dist 139.2646

Point 1033 N 121,612.1183 E 2,334,943.8728 Sta 11+39.26

Ending chain Y16 description

Chain Y17 contains:
1034 1035

Beginning chain Y17 description

Point 1034 N 122,200.8989 E 2,334,566.7649 Sta 10+00.00

Course from 1034 to 1035 N 78° 24' 45.56" E Dist 130.7452

Point 1035 N 122,227.1606 E 2,334,694.8454 Sta 11+30.75

Ending chain Y17 description

Chain Y18 contains:
1036 1037

Beginning chain Y18 description

Point 1036 N 122,957.1224 E 2,334,422.2711 Sta 10+00.00

Course from 1036 to 1037 N 75° 48' 19.37" E Dist 139.8498

Point 1037 N 122,991.4159 E 2,334,557.8511 Sta 11+39.85

Ending chain Y18 description

Chain Y19 contains:
1038 1039

Beginning chain Y19 description

Point 1038 N 123,419.3485 E 2,334,348.1441 Sta 10+00.00

Course from 1038 to 1039 N 87° 39' 56.26" E Dist 132.1440

Point 1039 N 123,424.7309 E 2,334,480.1784 Sta 11+32.14

Ending chain Y19 description

Chain Y20 contains:
1040 1041

Beginning chain Y20 description

Point 1040 N 123,993.9063 E 2,334,217.6163 Sta 10+00.00

Course from 1040 to 1041 N 81° 46' 27.06" E Dist 158.1080

Point 1041 N 124,016.5276 E 2,334,374.0977 Sta 11+58.11

Ending chain Y20 description

Chain Y21 contains:
1042 1043

Beginning chain Y21 description

Point 1042 N 124,293.2450 E 2,334,324.4955 Sta 10+00.00

Course from 1042 to 1043 N 83° 04' 44.67" E Dist 156.3903

Point 1043 N 124,312.0899 E 2,334,479.7463 Sta 11+56.39

Ending chain Y21 description

Chain Y22 contains:
1044 1045

Beginning chain Y22 description

Point 1044 N 124,605.5497 E 2,334,052.7107 Sta 10+00.00

Course from 1044 to 1045 N 87° 47' 28.95" E Dist 214.4812

Point 1045 N 124,613.8155 E 2,334,267.0326 Sta 12+14.48

Ending chain Y22 description

Chain Y23 contains:
1046 1047 1048

Beginning chain Y23 description

Point 1046 N 125,241.1771 E 2,334,154.5767 Sta 10+00.00

Course from 1046 to 1047 N 57° 03' 54.90" E Dist 126.0093

Point 1047 N 125,309.6863 E 2,334,260.3351 Sta 11+26.01

Course from 1047 to 1048 N 48° 55' 25.93" E Dist 186.1191

Point 1048 N 125,431.9780 E 2,334,400.6386 Sta 13+12.13

Ending chain Y23 description

5/28/99

C:\FUS\0015\147\NEW_HANOVER\W-5103A-41867-1.1.LUS_421_Median_Crossover_Relet (use this file)\P06DWAY\Proj\Plan_Sheets\W5103A-D03_Rdy_ID-3.dgn