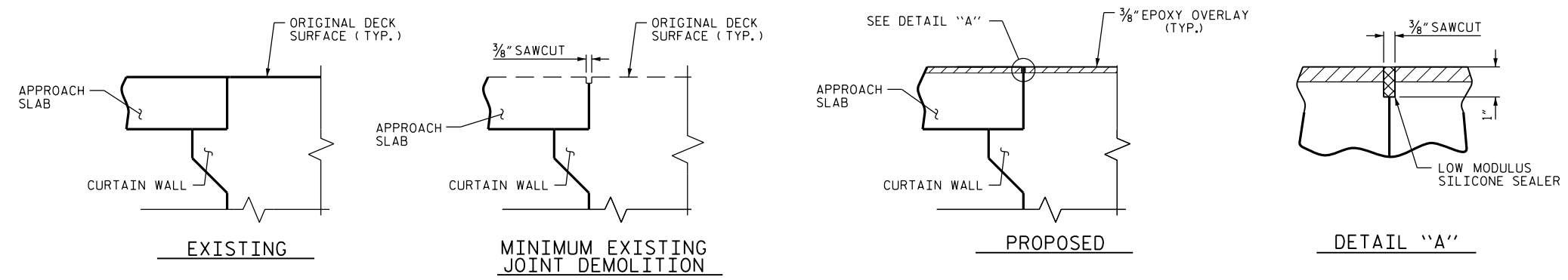
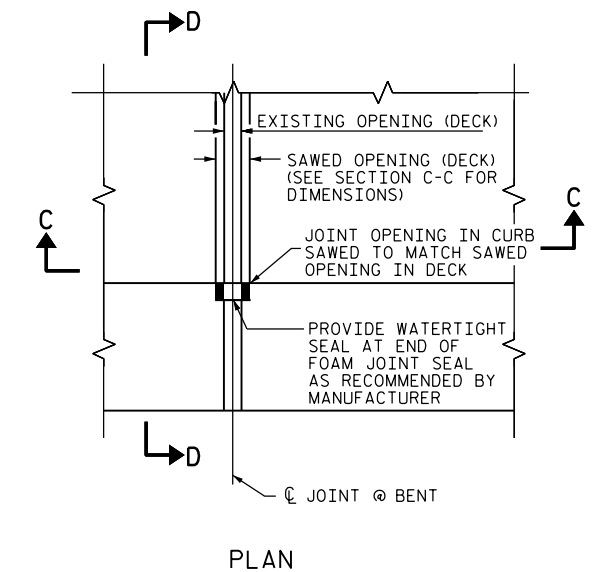


EXISTING  
MINIMUM EXISTING JOINT DEMOLITION  
PROPOSED  
SECTION A-A

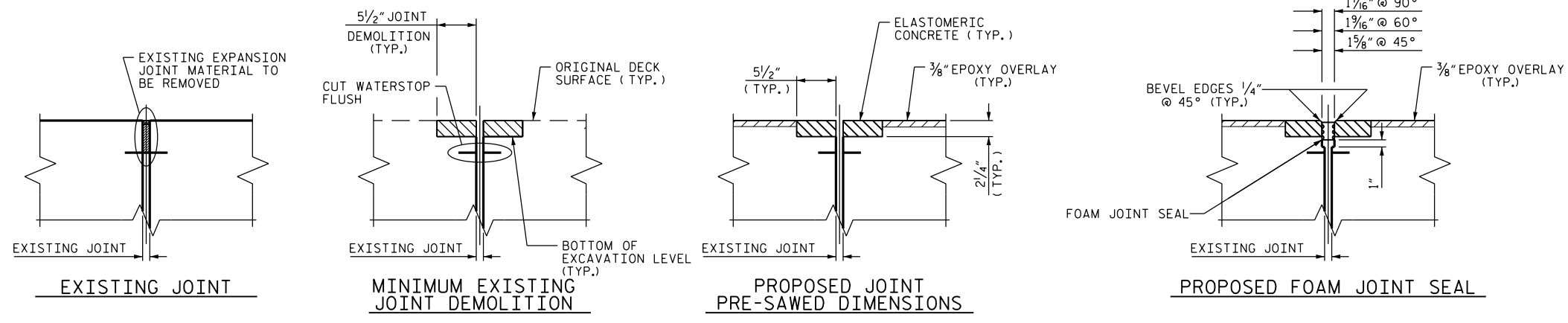
**NOTES:**  
FOR FOAM JOINT SEALS SEE SPECIAL PROVISIONS.  
THE INSTALLED FOAM JOINT SEAL SHALL BE WATER TIGHT.  
NOMINAL UNCOMPRESSED SEAL WIDTH OF FOAM JOINT SEAL SHALL BE 2".  
THE CONTRACTOR WILL NOT BE PERMITTED TO FORM THE JOINTS IN LIEU OF SAWING THE JOINT.



EXISTING  
MINIMUM EXISTING JOINT DEMOLITION  
PROPOSED  
SECTION B-B  
DETAIL "A"

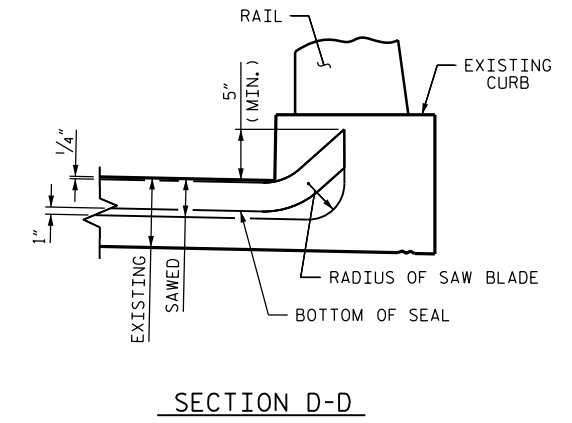


PLAN



EXISTING JOINT  
MINIMUM EXISTING JOINT DEMOLITION  
PROPOSED JOINT PRE-SAWED DIMENSIONS  
PROPOSED FOAM JOINT SEAL  
SECTION C-C

REMOVAL OF CONCRETE AT THE EXISTING JOINT SHALL RESULT IN THE BOTTOM OF THE EXCAVATION BEING REASONABLY FLAT AND LEVEL, TO PROVIDE SUFFICIENT SUBSTRATE FOR PLACEMENT AND SUPPORT OF ELASTOMERIC OR REPAIR CONCRETE.



SECTION D-D

JOINT SEAL DETAILS AT BENT

IF THE EMBEDDED PORTION OF THE EXISTING PLASTIC WATERSTOP IS EXPOSED DURING REMOVAL OF UNSOUND CONCRETE OR IF UNSOUND CONCRETE IS REMOVED WITHIN 2" OF THE WATERSTOP, THE ENTIRE WATERSTOP SHALL BE REMOVED

PROJECT NO. BP-5500FF  
CRAVEN COUNTY  
BRIDGE NO. 83

LOCATION	JOINT LENGTH	JOINT DEMO.	LOCATION	JOINT LENGTH	JOINT DEMO.	LOCATION	JOINT LENGTH	JOINT DEMO.	LOCATION	JOINT LENGTH	JOINT DEMO.	LOCATION	JOINT LENGTH	JOINT DEMO.	LOCATION	JOINT LENGTH	JOINT DEMO.
BENT 1	51'-8 3/4"	47.42 SF	BENT 11	51'-8 3/4"	47.42 SF	BENT 21	51'-8 3/4"	47.42 SF	BENT 31	54'-0 1/2"	49.54 SF	BENT 41	40'-0"	36.66 SF	BENT 51	40'-0"	36.66 SF
BENT 2	51'-8 3/4"	47.42 SF	BENT 12	51'-8 3/4"	47.42 SF	BENT 22	51'-8 3/4"	47.42 SF	BENT 32	58'-4"	53.47 SF	BENT 42	40'-0"	36.66 SF	BENT 52	40'-0"	36.66 SF
BENT 3	51'-8 3/4"	47.42 SF	BENT 13	51'-8 3/4"	47.42 SF	BENT 23	51'-8 3/4"	47.42 SF	BENT 33	63'-3 1/2"	58.01 SF	BENT 43	40'-0"	36.66 SF			
BENT 4	51'-8 3/4"	47.42 SF	BENT 14	51'-8 3/4"	47.42 SF	BENT 24	51'-8 3/4"	47.42 SF	BENT 34	68'-3"	62.56 SF	BENT 44	40'-0"	36.66 SF			
BENT 5	51'-8 3/4"	47.42 SF	BENT 15	51'-8 3/4"	47.42 SF	BENT 25	51'-8 3/4"	47.42 SF	BENT 35	73'-2 1/2"	67.10 SF	BENT 45	40'-0"	36.66 SF			
BENT 6	51'-8 3/4"	47.42 SF	BENT 16	51'-8 3/4"	47.42 SF	BENT 26	51'-8 3/4"	47.42 SF	BENT 36	78'-2 1/4"	71.67 SF	BENT 46	40'-0"	36.66 SF			
BENT 7	51'-8 3/4"	47.42 SF	BENT 17	51'-8 3/4"	47.42 SF	BENT 27	51'-8 3/4"	47.42 SF	BENT 37	83'-1 3/16"	76.22 SF	BENT 47	40'-0"	36.66 SF			
BENT 8	51'-8 3/4"	47.42 SF	BENT 18	51'-8 3/4"	47.42 SF	BENT 28	51'-8 3/4"	47.42 SF	BENT 38	73'-6 5/8"	67.42 SF	BENT 48	40'-0"	36.66 SF			
BENT 9	51'-8 3/4"	47.42 SF	BENT 19	51'-8 3/4"	47.42 SF	BENT 29	51'-8 3/4"	47.42 SF	BENT 39	40'-0"	36.66 SF	BENT 49	40'-0"	36.66 SF			
BENT 10	51'-8 3/4"	47.42 SF	BENT 20	51'-8 3/4"	47.42 SF	BENT 30	51'-8 3/4"	47.42 SF	BENT 40	40'-0"	36.66 SF	BENT 50	40'-0"	36.66 SF			

DRAWN BY: M.A.LEE DATE: 03/2015  
CHECKED BY: W.M. CLARKE DATE: 03/2015

DocuSigned by:  
*William M. Clarke*  
1EB2009EAAF437...  
6/10/2015



STATE OF NORTH CAROLINA  
DEPARTMENT OF TRANSPORTATION  
RALEIGH

## JOINT DETAILS

REVISIONS						SHEET NO.	
NO.	BY:	DATE:	NO.	BY:	DATE:	S-6	
1			3			TOTAL SHEETS	
2			4			23	