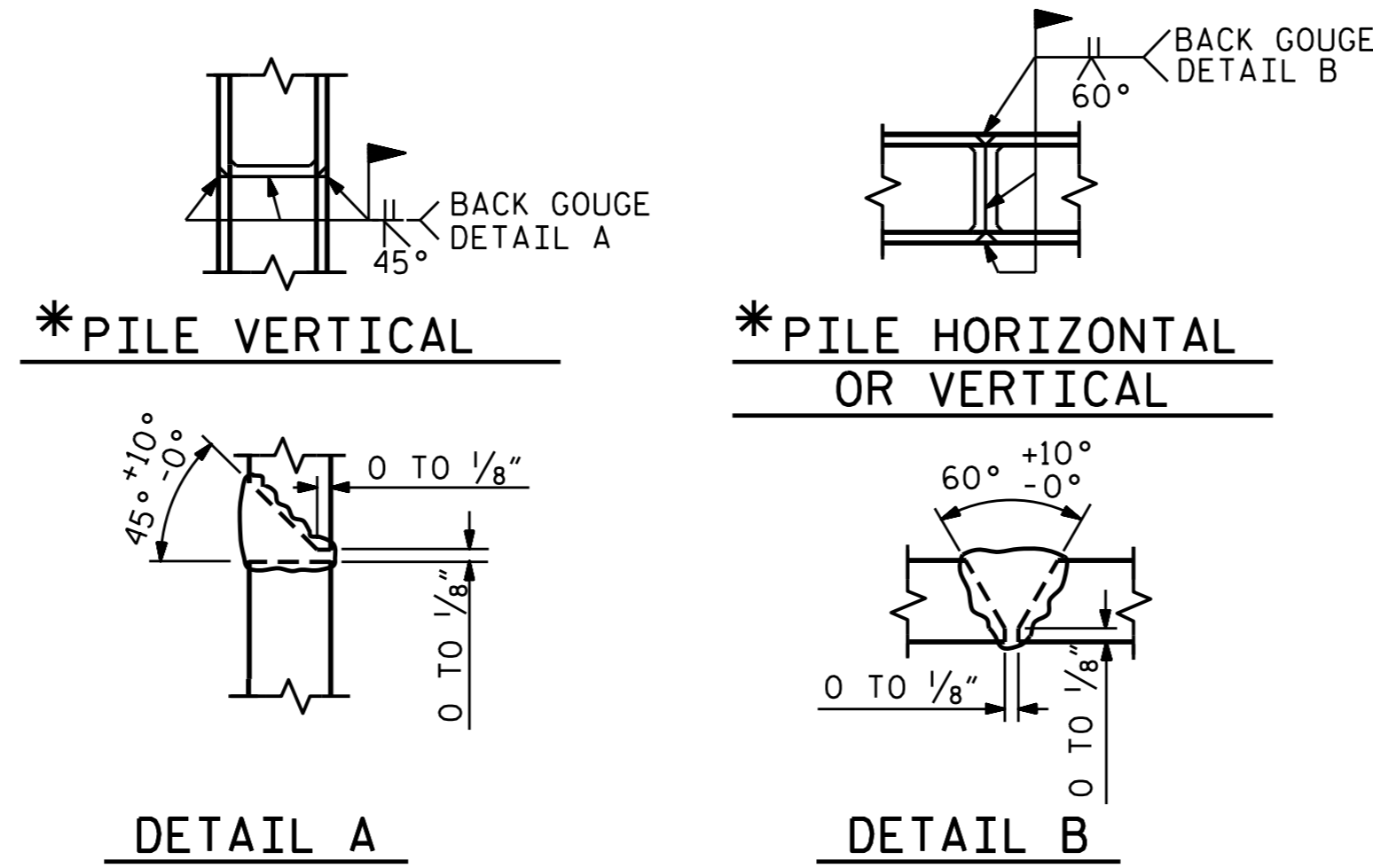


BAGGED STONE AND PIPE SHALL BE PLACED IMMEDIATELY AFTER COMPLETION OF END BENT EXCAVATION. PIPE MAY BE EITHER CONCRETE, CORRUGATED STEEL, CORRUGATED ALUMINUM ALLOY, OR CORRUGATED PLASTIC. PERFORATED PIPE WILL NOT BE ALLOWED.

BAGGED STONE SHALL REMAIN IN PLACE UNTIL THE ENGINEER DIRECTS THAT IT BE REMOVED. THE CONTRACTOR SHALL REMOVE AND DISPOSE OF SILT ACCUMULATIONS AT BAGGED STONE WHEN SO DIRECTED BY THE ENGINEER. BAGS SHALL BE REMOVED AND REPLACED WHENEVER THE ENGINEER DETERMINES THAT THEY HAVE DETERIORATED AND LOST THEIR EFFECTIVENESS.

NO SEPARATE PAYMENT WILL BE MADE FOR THIS WORK AND THE ENTIRE COST OF THIS WORK SHALL BE INCLUDED IN THE UNIT CONTRACT PRICE BID FOR THE SEVERAL PAY ITEMS.

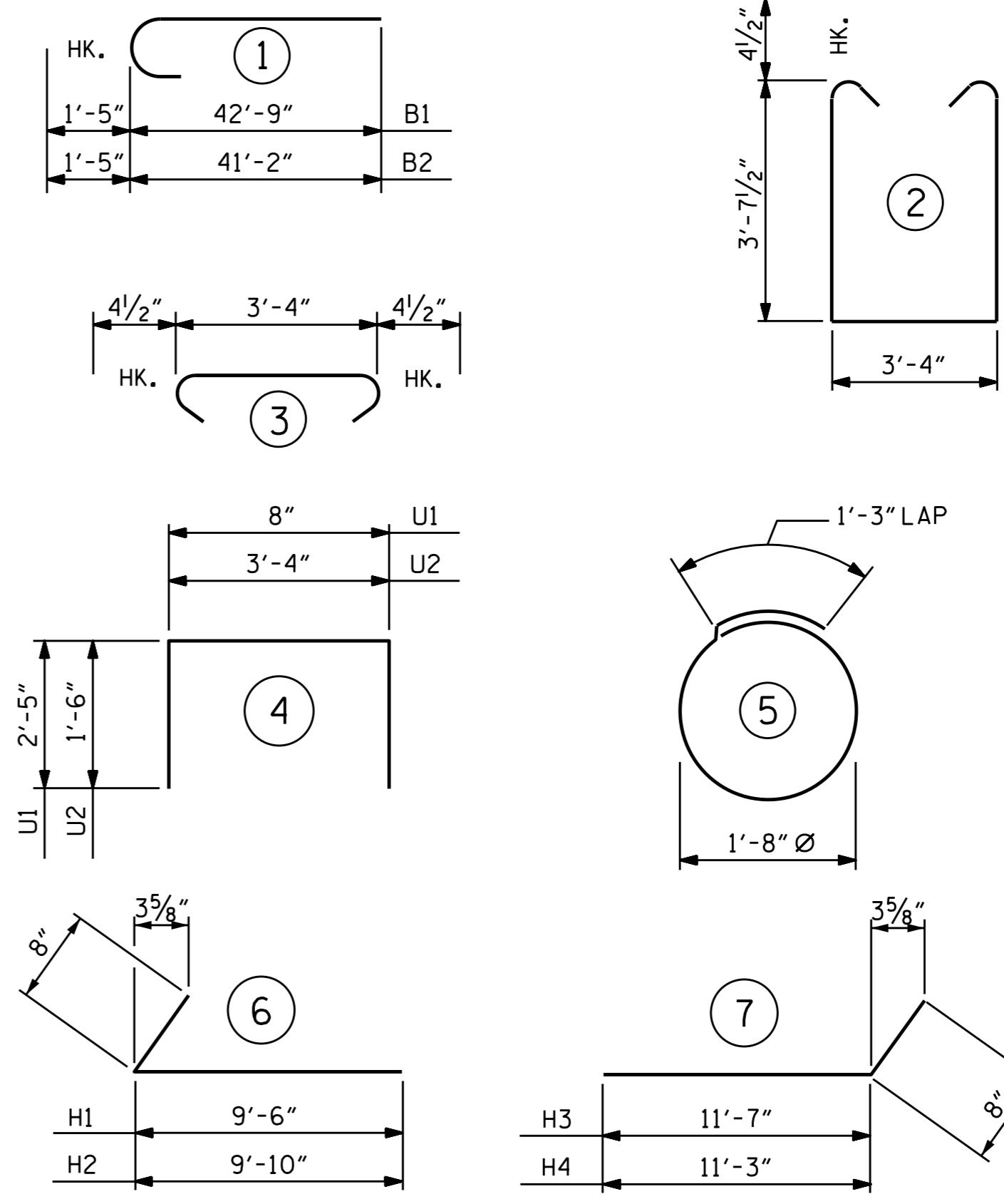
TEMPORARY DRAINAGE AT END BENT



* POSITION OF PILE DURING WELDING.

PILE SPLICE DETAILS

BAR TYPES



ALL BAR DIMENSIONS ARE OUT TO OUT.

BILL OF MATERIAL

END BENT No. 2

BAR	NO.	SIZE	TYPE	LENGTH	WEIGHT
B1	8	#10	1	44'-2"	1520
B2	10	#10	1	42'-7"	1832
B3	24	#4	STR	26'-6"	425
B4	4	#4	STR	14'-11"	40
B5	8	#4	STR	3'-0"	16
B6	12	#4	STR	26'-6"	212
B7	19	#4	STR	3'-4"	42
H1	20	#5	6	10'-2"	212
H2	20	#5	6	10'-6"	219
H3	20	#5	7	12'-3"	256
H4	20	#5	7	11'-11"	249
K1	30	#4	STR	26'-6"	531
K2	8	#4	STR	2'-11"	16
S1	88	#4	2	11'-4"	666
S2	88	#4	3	4'-1"	240
S3	36	#4	5	6'-6"	156
U1	68	#4	4	5'-6"	250
U2	18	#4	4	6'-4"	76
V1	136	#5	STR	8'-3"	1170
V2	58	#5	STR	9'-11"	600

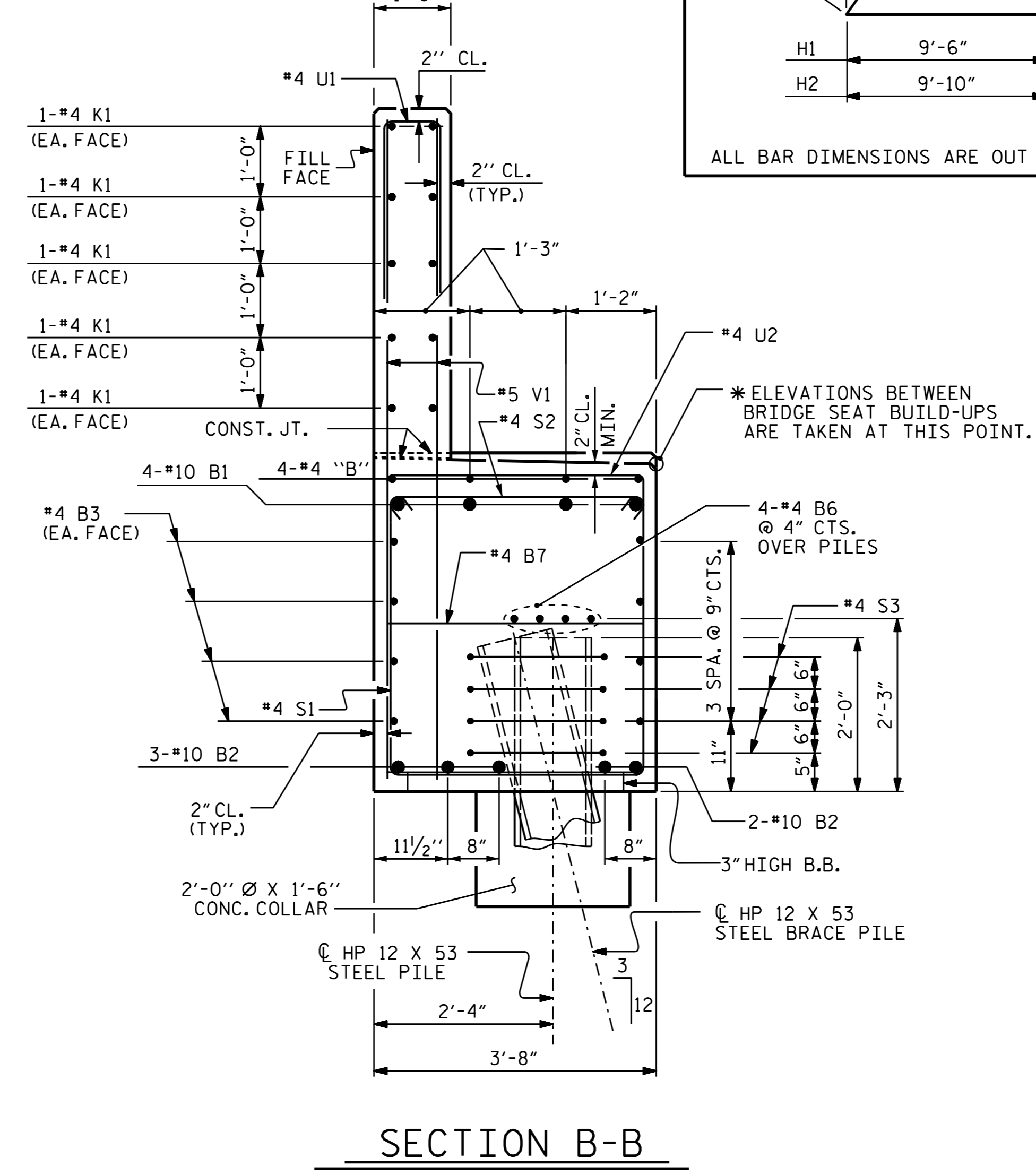
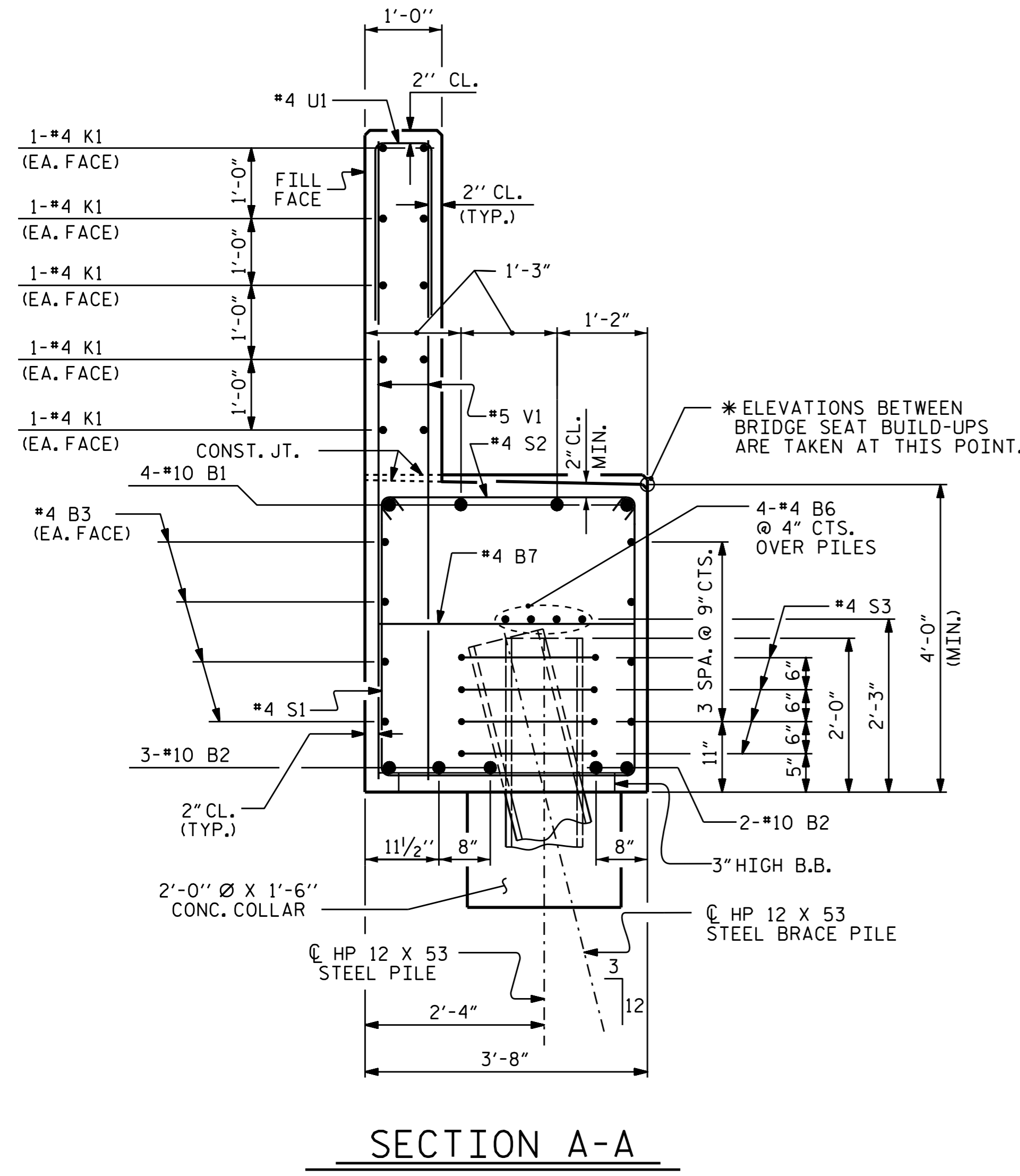
REINFORCING STEEL = 8728 LBS.

CLASS A CONCRETE BREAKDOWN

POUR #1 CAP, LOWER PART OF WINGS & COLLARS	47.4 C.Y.
POUR #2 BACKWALL & UPPER PART OF WINGS	18.1 C.Y.
CLASS A CONCRETE TOTAL	65.5 C.Y.

HP 12 X 53 STEEL PILES

NO.	9	550	LIN. FT.
-----	---	-----	----------



PROJECT NO. R-2915A
WATAUGA/ASHE COUNTY
STATION: 11+18.63 -L-

SHEET 3 OF 3

STATE OF NORTH CAROLINA
DEPARTMENT OF TRANSPORTATION
RALEIGH
SUBSTRUCTURE
END BENT No. 2



DRAWN BY: V.X. NGUYEN DATE: 10-09-14
CHECKED BY: J.P. MCCARTHA DATE: 3-13-15
DESIGN ENGINEER OF RECORD: A.M. LEE DATE: 4-9-15

REVISIONS						SHEET NO.
NO.	BY:	DATE:	NO.	BY:	DATE:	S-28
1			3			TOTAL SHEETS
2			4			31

STR. 1