

TRANSVERSE CONSTRUCTION JOINT DETAIL

NOTE: REINFORCING STEEL IN SLAB NOT SHOWN. LONGITUDINAL REINFORCING STEEL SHALL BE CONTINUOUS THRU JOINT

REINFORCING BAR SCHEDULE SPANS A & B

BAR	NO.	SIZE	TYPE	LENGTH	WEIGHT	BAR	NO.	SIZE	TYPE	LENGTH	WEIGHT	BAR	NO.	SIZE	TYPE	LENGTH	WEIGHT
* A1	654	5	STR	31'-6"	21,487	A201	4	5	STR	58'-9"	245	* B1	141	*4	STR	22'-5"	2,111
A2	654	5	STR	31'-4"	21,373	A202	4	5	STR	56'-11"	237	* B2	94	*7	STR	35'-5"	6,805
* A3	6	6	STR	5'-8"	51	A203	4	5	STR	55'-1"	230	* B3	44	*7	STR	27'-2"	2,443
						A204	4	5	STR	53'-4"	223	* B4	94	*4	STR	29'-6"	1,852
* A101	4	5	STR	58'-9"	245	A205	4	5	STR	51'-6"	215	B5	320	*5	STR	46'-9"	15,603
* A102	4	5	STR	56'-11"	237	A206	4	5	STR	49'-8"	207						
* A103	4	5	STR	55'-1"	230	A207	4	5	STR	47'-10"	200	* G1	4	*5	STR	35'-2"	147
* A104	4	5	STR	53'-4"	223	A208	4	5	STR	46'-1"	192	* J1	128	*4	9	1'-5"	121
* A105	4	5	STR	51'-6"	215	A209	4	5	STR	44'-3"	185						
* A106	4	5	STR	49'-8"	207	A210	4	5	STR	42'-5"	177	* K1	8	*8	1	15'-7"	333
* A107	4	5	STR	47'-10"	200	A211	4	5	STR	40'-7"	169	* K2	16	*8	2	23'-4"	997
* A108	4	5	STR	46'-1"	192	A212	4	5	STR	38'-10"	162	K3	30	*6	STR	9'-8"	436
* A109	4	5	STR	44'-3"	185	A213	4	5	STR	37'-0"	154	K4	10	*4	7	7'-4"	49
* A110	4	5	STR	42'-5"	177	A214	4	5	STR	35'-2"	147	K5	20	*4	8	14'-4"	191
* A111	4	5	STR	40'-7"	169	A215	4	5	STR	33'-4"	139	K6	20	*4	STR	9'-8"	129
* A112	4	5	STR	38'-10"	162	A216	4	5	STR	31'-7"	132	K7	20	*4	STR	10'-10"	145
* A113	4	5	STR	37'-0"	154	A217	4	5	STR	29'-9"	124	K8	10	*4	STR	8'-3"	55
* A114	4	5	STR	35'-2"	147	A218	4	5	STR	27'-11"	116						
* A115	4	5	STR	33'-4"	139	A219	4	5	STR	26'-1"	109	* S1	100	4	3	4'-6"	301
* A116	4	5	STR	31'-7"	132	A220	4	5	STR	24'-4"	102	* S2	100	5	4	5'-10"	608
* A117	4	5	STR	29'-9"	124	A221	4	5	STR	22'-6"	94	* S3	170	4	5	2'-9"	312
* A118	4	5	STR	27'-11"	116	A222	4	5	STR	20'-8"	86	U1	35	4	6	15'-0"	351
* A119	4	5	STR	26'-1"	109	A223	4	5	STR	18'-10"	79	U2	10	4	6	13'-0"	87
* A120	4	5	STR	24'-4"	102	A224	4	5	STR	17'-1"	71						
* A121	4	5	STR	22'-6"	94	A225	4	5	STR	15'-3"	64						
* A122	4	5	STR	20'-8"	86	A226	4	5	STR	13'-5"	56						
* A123	4	5	STR	18'-10"	79	A227	4	5	STR	11'-7"	48						
* A124	4	5	STR	17'-1"	71	A228	4	5	STR	9'-10"	41						
* A125	4	5	STR	15'-3"	64	A229	4	5	STR	8'-0"	33						
* A126	4	5	STR	13'-5"	56	A230	4	5	STR	6'-2"	26						
* A127	4	5	STR	11'-7"	48	A231	4	5	STR	4'-4"	18						
* A128	4	5	STR	9'-10"	41												
* A129	4	5	STR	8'-0"	33												
* A130	4	5	STR	6'-2"	26												
* A131	4	5	STR	4'-4"	18												

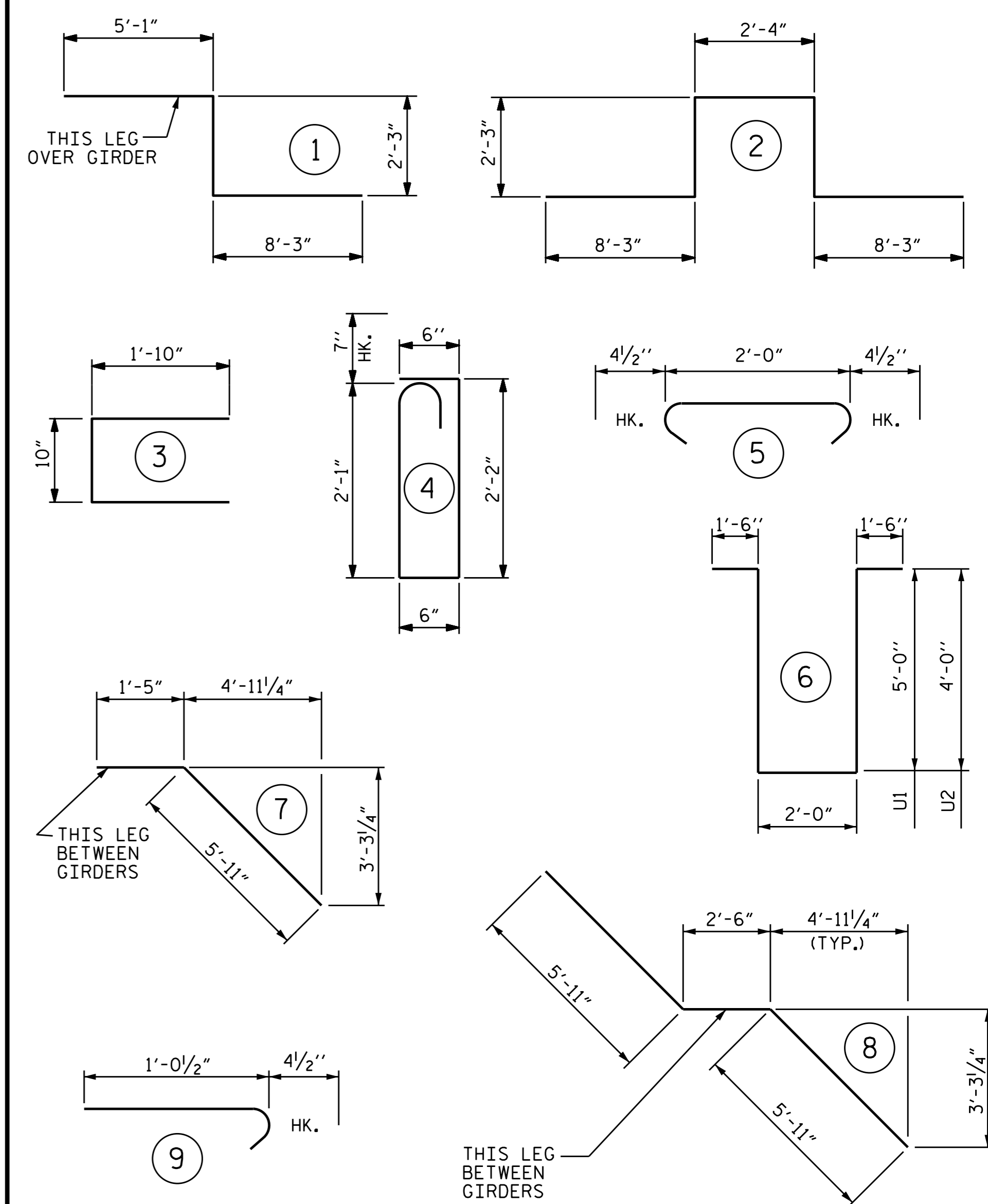
REINFORCING STEEL (LBS.) 42,812
 * EPOXY COATED REINFORCING STEEL (LBS.) 41,337

* THESE BARS ARE EPOXY COATED

SUPERSTRUCTURE REINFORCING STEEL LENGTHS ARE BASED ON THE FOLLOWING MINIMUM SPLICE LENGTHS

BAR SIZE	SUPERSTRUCTURE EXCEPT APPROACH SLABS, PARAPET, AND BARRIER RAIL		APPROACH SLABS		PARAPET AND BARRIER RAIL
	EPOXY COATED	UNCOATED	EPOXY COATED	UNCOATED	
#4	2'-0"	1'-9"	2'-0"	1'-9"	2'-9"
#5	2'-6"	2'-2"	2'-6"	2'-2"	3'-5"
#6	3'-0"	2'-7"	3'-10"	2'-7"	4'-4"
#7	5'-3"	3'-6"			
#8	6'-10"	4'-7"			

BAR TYPES



ALL BAR DIMENSIONS ARE OUT TO OUT

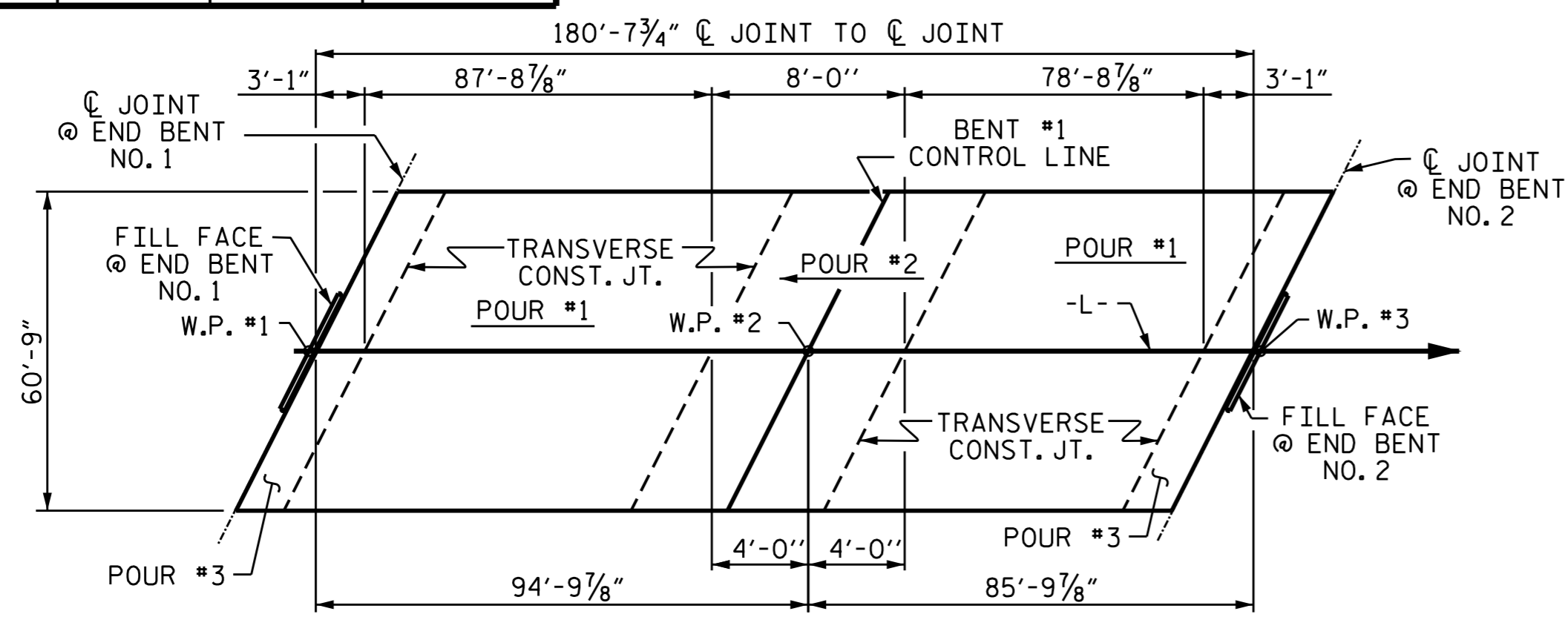
-SUPERSTRUCTURE BILL OF MATERIAL-

SPANS A & B	CLASS AA CONCRETE		REINFORCING STEEL	EPOXY COATED REINFORCING STEEL
	(CU. YDS.)	(LBS.)	(LBS.)	(LBS.)
POUR #1	192.5			
POUR #2	217.1	42,812	41,337	
POUR #3	21.7			
TOTALS **	431.3	42,812	41,337	

** QUANTITIES FOR BARRIER RAIL AND THE PERMANENT CONCRETE MEDIAN STRIP ARE NOT INCLUDED

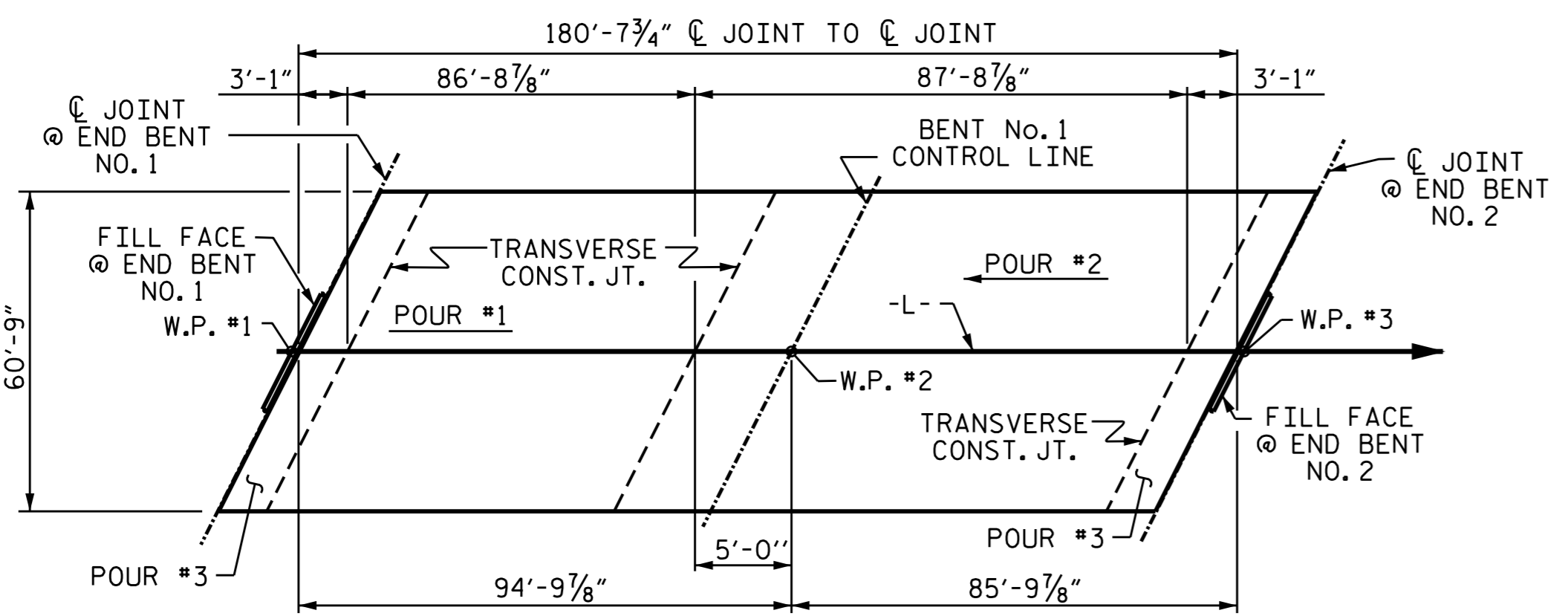
GROOVING BRIDGE FLOORS

APPROACH SLABS	2,177	SO.FT.
BRIDGE DECK	8,249	SO.FT.
TOTAL	10,426	SO.FT.

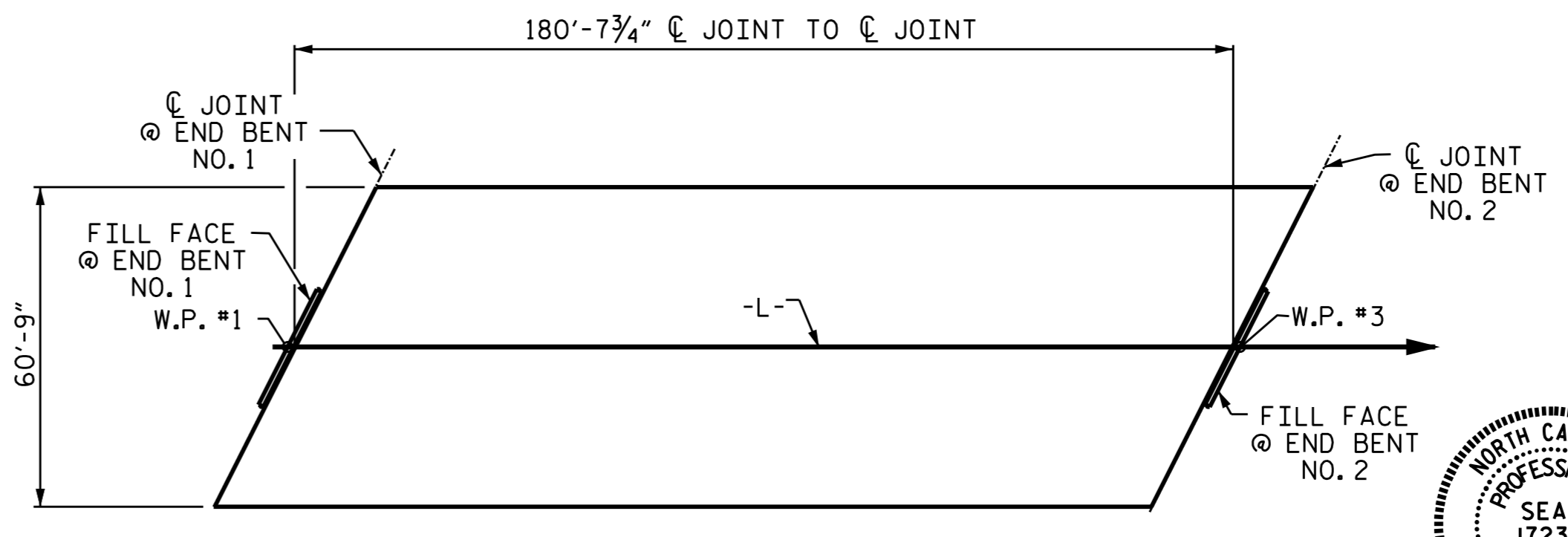


OPTIONAL POUR SEQUENCE

POUR (2) CANNOT BE STARTED UNTIL BOTH ADJACENT (1) POURS REACH A MINIMUM OF 3000 PSI.



POUR SEQUENCE

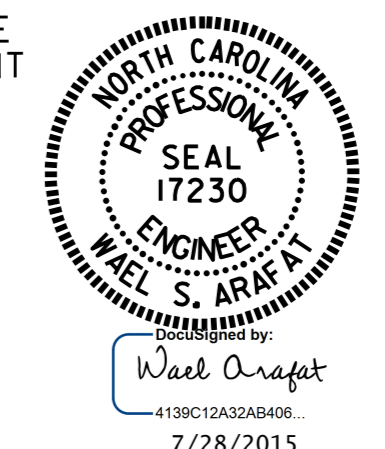


LAYOUT FOR COMPUTING AREA REINFORCED CONCRETE DECK SLAB (SQ. FT. = 10,974)

ASSEMBLED BY: V.X. NGUYEN DATE: 8-22-14
 CHECKED BY: D. HODGE DATE: 1-2015
 DRAWN BY: JMB 5/87 REV. 8/16/99 RWW/LES
 CHECKED BY: SJD 9/87 REV. 5/1/06 TLA/GM
 REV. 10/1/11 MAA/GM

DESIGN ENGINEER OF RECORD: A.M. LEE DATE: 4-15

28-JUL-2015 14:39
 R:\Structures\FinalPlans\STR*1R-2915A.SD.BM.dgn
 warafat



PROJECT NO. R-2915A
 WATAUGA/ASHE COUNTY
 STATION: 11+18.63 -L-

STATE OF NORTH CAROLINA
 DEPARTMENT OF TRANSPORTATION
 RALEIGH
 STANDARD
 SUPERSTRUCTURE
 BILL OF MATERIAL

REVISIONS						SHEET NO. S-20
NO.	BY:	DATE:	NO.	BY:	DATE:	
1			3			TOTAL SHEETS 31
2			4			

STR. #1 STD. NO. BOM2