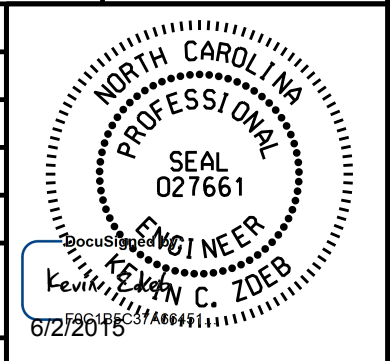
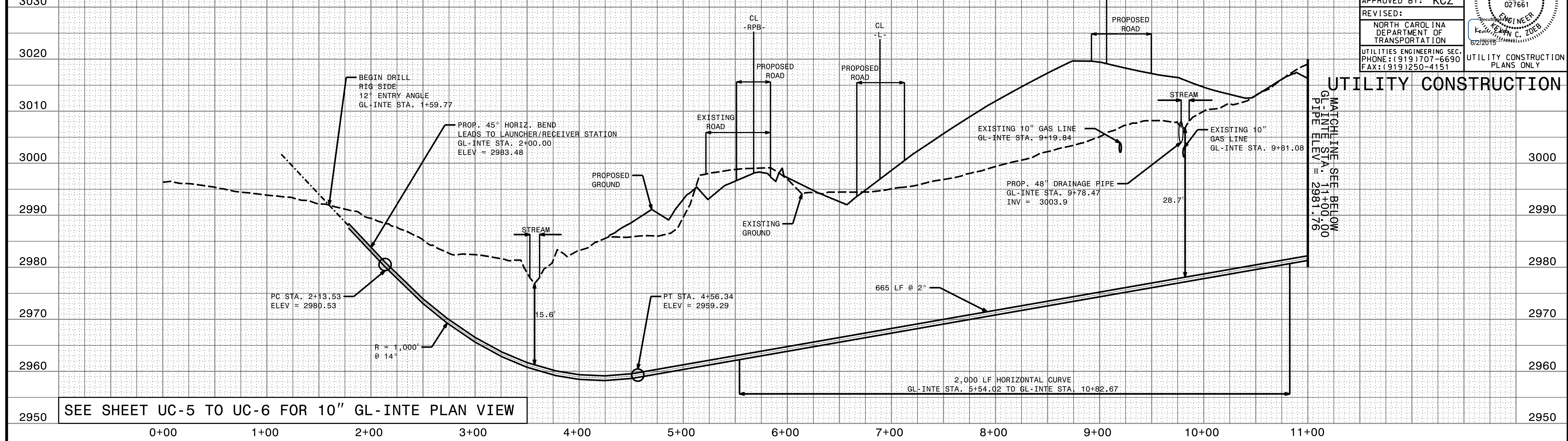


DESIGNED BY: SAG
DRAWN BY: SAG
CHECKED BY: KCZ
APPROVED BY: KCZ
REVISOR:
NORTH CAROLINA DEPARTMENT OF TRANSPORTATION
UTILITIES ENGINEERING SEC. PHONE: (919) 707-6690 FAX: (919) 250-4151
UTILITY CONSTRUCTION PLANS ONLY



10" Steel Gas Line - GL-INTE

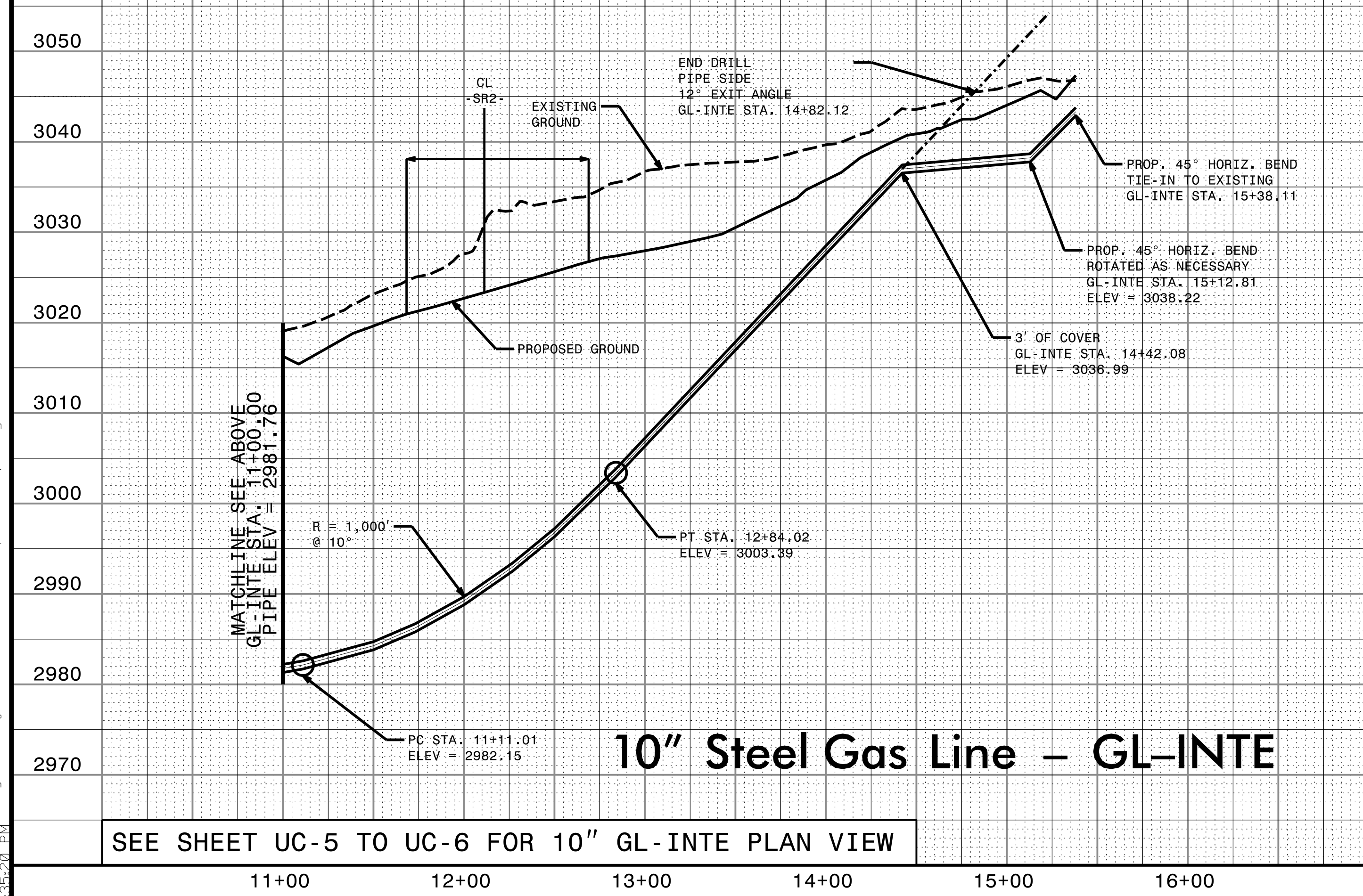


SEE SHEET UC-5 TO UC-6 FOR 10" GL-INTE PLAN VIEW

UTILITY CONSTRUCTION

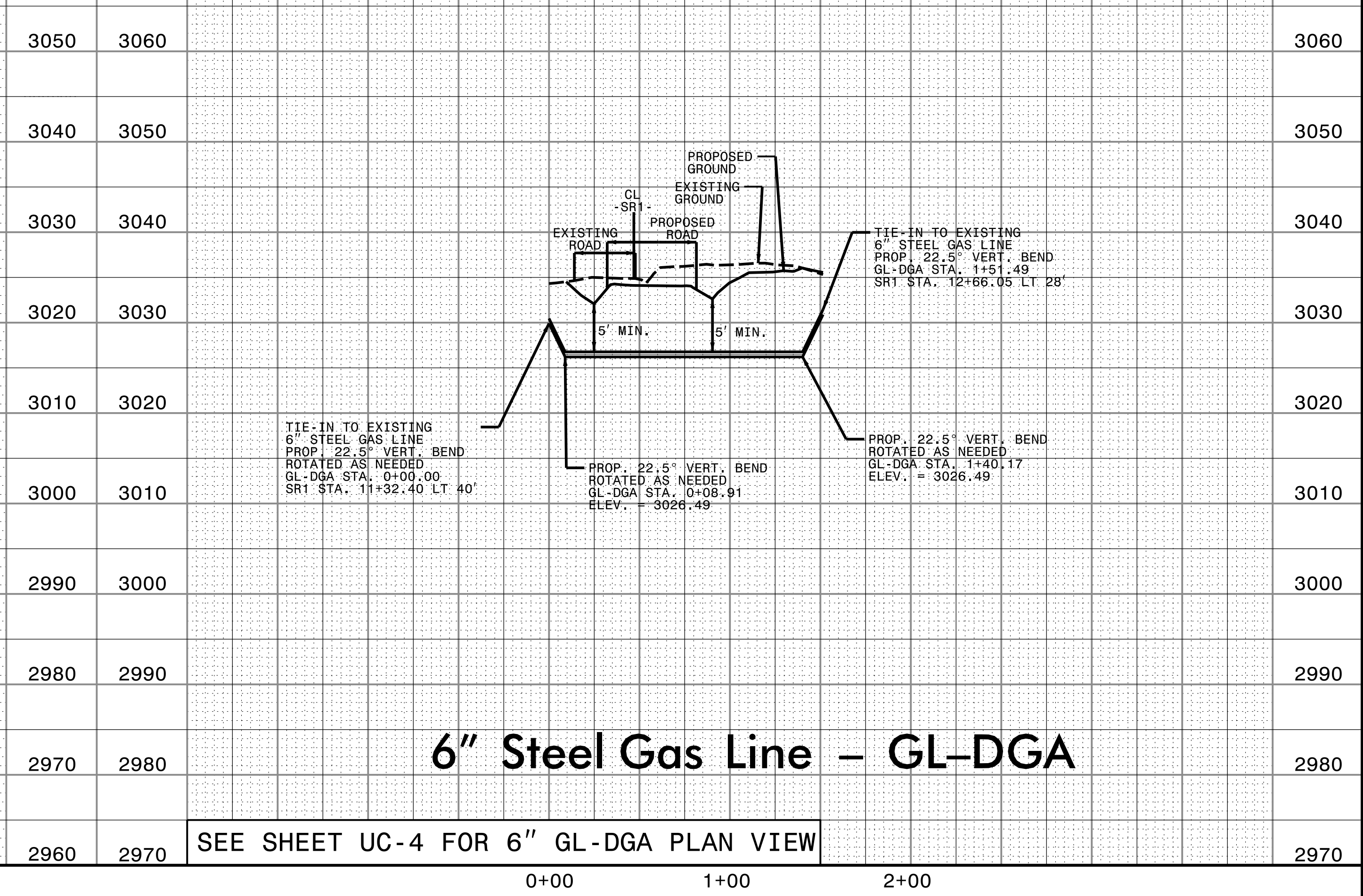
MATCHLINE SEE BELOW
GL-INTE STA. 11+00.00
PIPE ELEV = 2981.76

NOTE: PIPE ELEVATIONS ARE TO CENTER OF PIPE.



SEE SHEET UC-5 TO UC-6 FOR 10" GL-INTE PLAN VIEW

NOTE: PIPE ELEVATIONS ARE TO CENTER OF PIPE.



SEE SHEET UC-4 FOR 6" GL-DGA PLAN VIEW

6" Steel Gas Line - GL-DGA

6/2/2015 1:05:18 PM \\p01\proj\280_0011_R2915A_ut.p1\UC16_psh.dgn