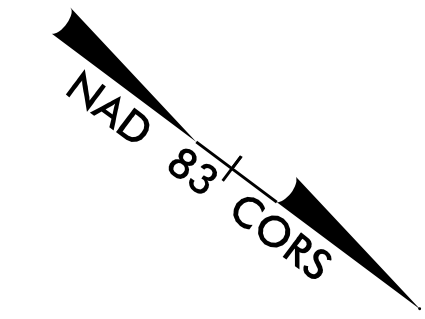
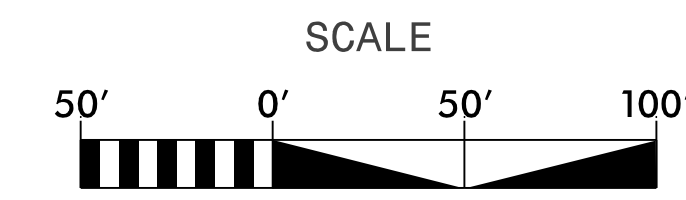
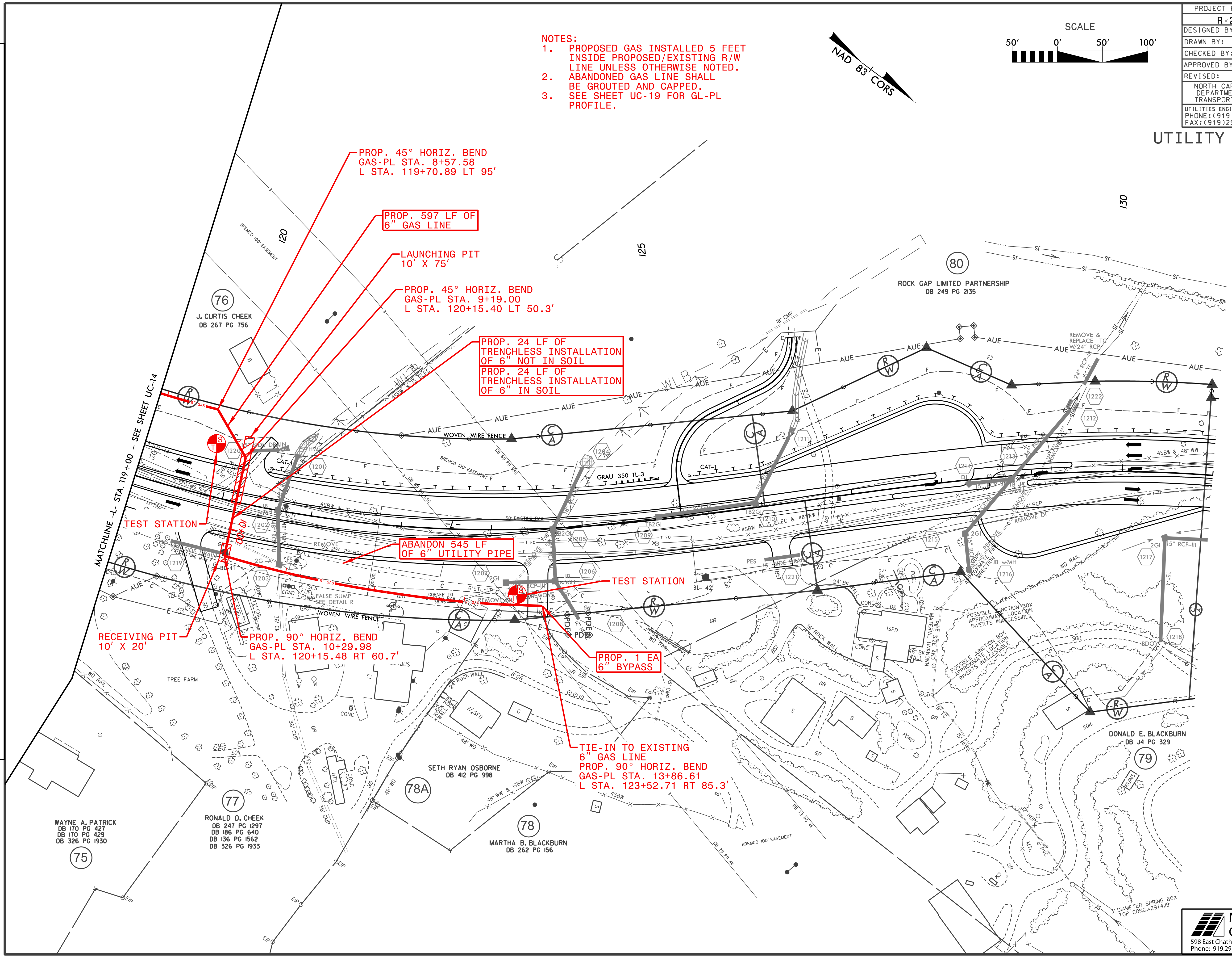


PROJECT REFERENCE NO.	SHEET NO.
R-2915A	UC-15
DESIGNED BY: SAG	
DRAWN BY: SAG	
CHECKED BY: KCZ	
APPROVED BY: KCZ	
REVISED:	
NORTH CAROLINA DEPARTMENT OF TRANSPORTATION	
UTILITIES ENGINEERING SEC. PHONE: (919) 707-6690 FAX: (919) 250-4151	UTILITY CONSTRUCTION PLANS ONLY



- NOTES:**
1. PROPOSED GAS INSTALLED 5 FEET INSIDE PROPOSED/EXISTING R/W LINE UNLESS OTHERWISE NOTED.
  2. ABANDONED GAS LINE SHALL BE GROUTED AND CAPPED.
  3. SEE SHEET UC-19 FOR GL-PL PROFILE.



REVISIONS

\$FILE\$  
\$DATE\$

WAYNE A. PATRICK  
DB 170 PG 427  
DB 170 PG 429  
DB 326 PG 1930

RONALD D. CHEEK  
DB 247 PG 1297  
DB 186 PG 640  
DB 136 PG 1562  
DB 326 PG 1933

SETH RYAN OSBORNE  
DB 412 PG 998

MARTHA B. BLACKBURN  
DB 262 PG 156

DONALD E. BLACKBURN  
DB J4 PG 329