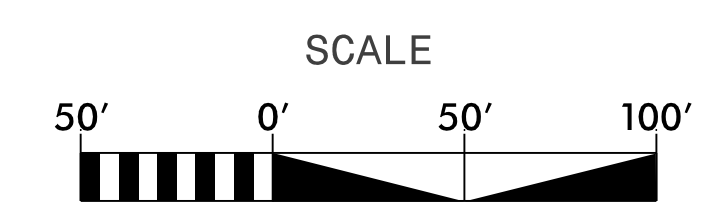


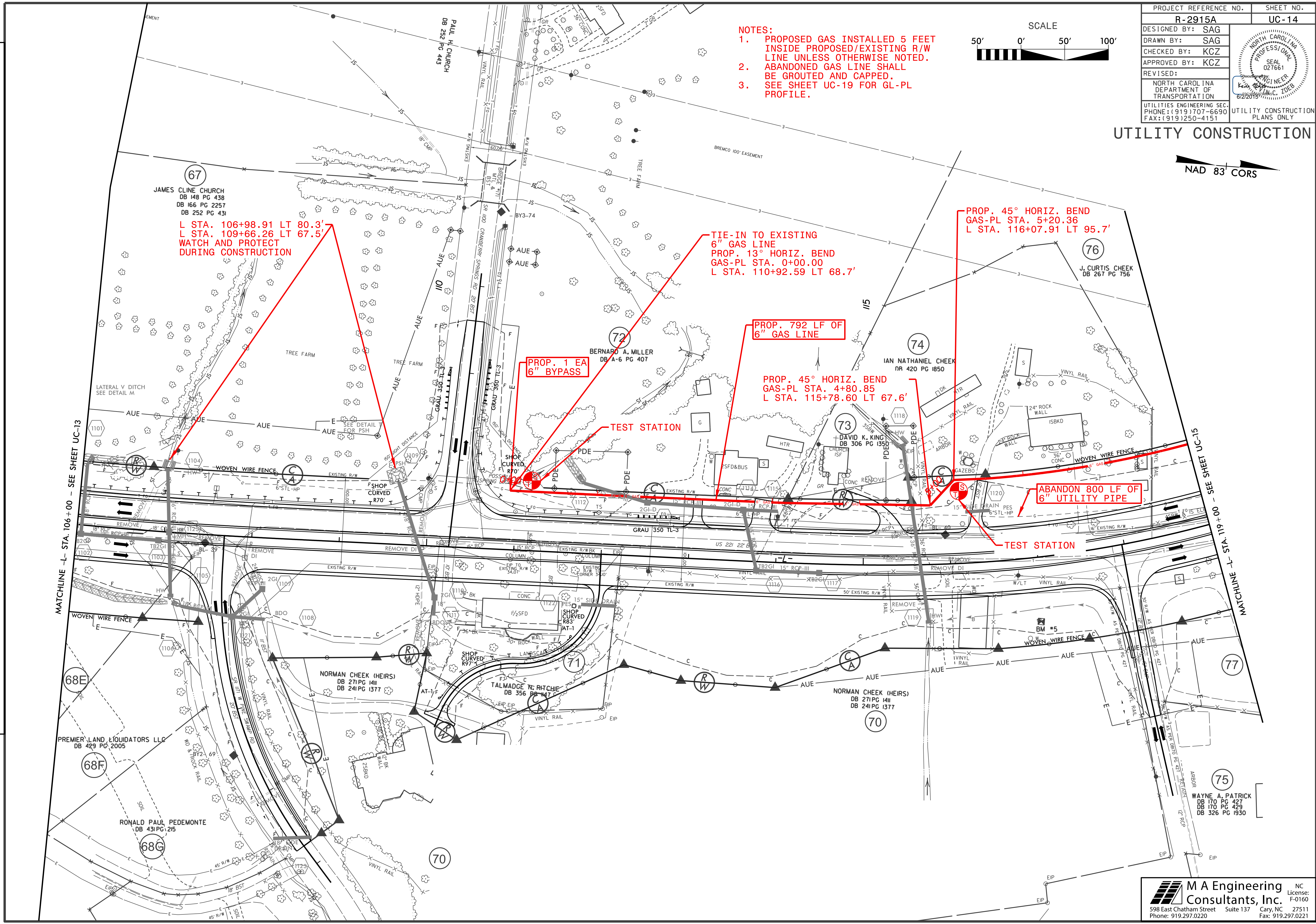
PROJECT REFERENCE NO.	SHEET NO.
R-2915A	UC-14
DESIGNED BY: SAG	
DRAWN BY: SAG	
CHECKED BY: KCZ	
APPROVED BY: KCZ	
REVISED:	
NORTH CAROLINA DEPARTMENT OF TRANSPORTATION	
UTILITIES ENGINEERING SEC. PHONE: (919) 707-6690 FAX: (919) 250-4151	UTILITY CONSTRUCTION PLANS ONLY

UTILITY CONSTRUCTION



NAD 83 CORS

- NOTES:**
1. PROPOSED GAS INSTALLED 5 FEET INSIDE PROPOSED/EXISTING R/W LINE UNLESS OTHERWISE NOTED.
 2. ABANDONED GAS LINE SHALL BE GROUTED AND CAPPED.
 3. SEE SHEET UC-19 FOR GL-PL PROFILE.



L STA. 106+98.91 LT 80.3'
 L STA. 109+66.26 LT 67.5'
 WATCH AND PROTECT DURING CONSTRUCTION

TIE-IN TO EXISTING 6" GAS LINE
 PROP. 13° HORIZ. BEND
 GAS-PL STA. 0+00.00
 L STA. 110+92.59 LT 68.7'

PROP. 45° HORIZ. BEND
 GAS-PL STA. 5+20.36
 L STA. 116+07.91 LT 95.7'

PROP. 792 LF OF 6" GAS LINE

PROP. 45° HORIZ. BEND
 GAS-PL STA. 4+80.85
 L STA. 115+78.60 LT 67.6'

PROP. 1 EA 6" BYPASS

ABANDON 800 LF OF 6" UTILITY PIPE

MATCHLINE -L- STA. 106+00 - SEE SHEET UC-13

MATCHLINE -L- STA. 119+00 - SEE SHEET UC-15

REVISIONS

\$FILE\$
 \$DATE\$