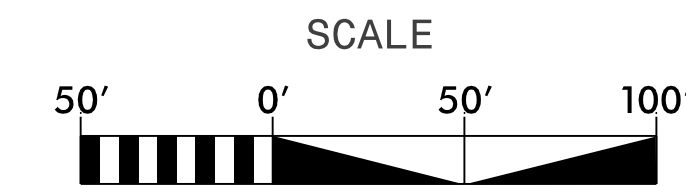
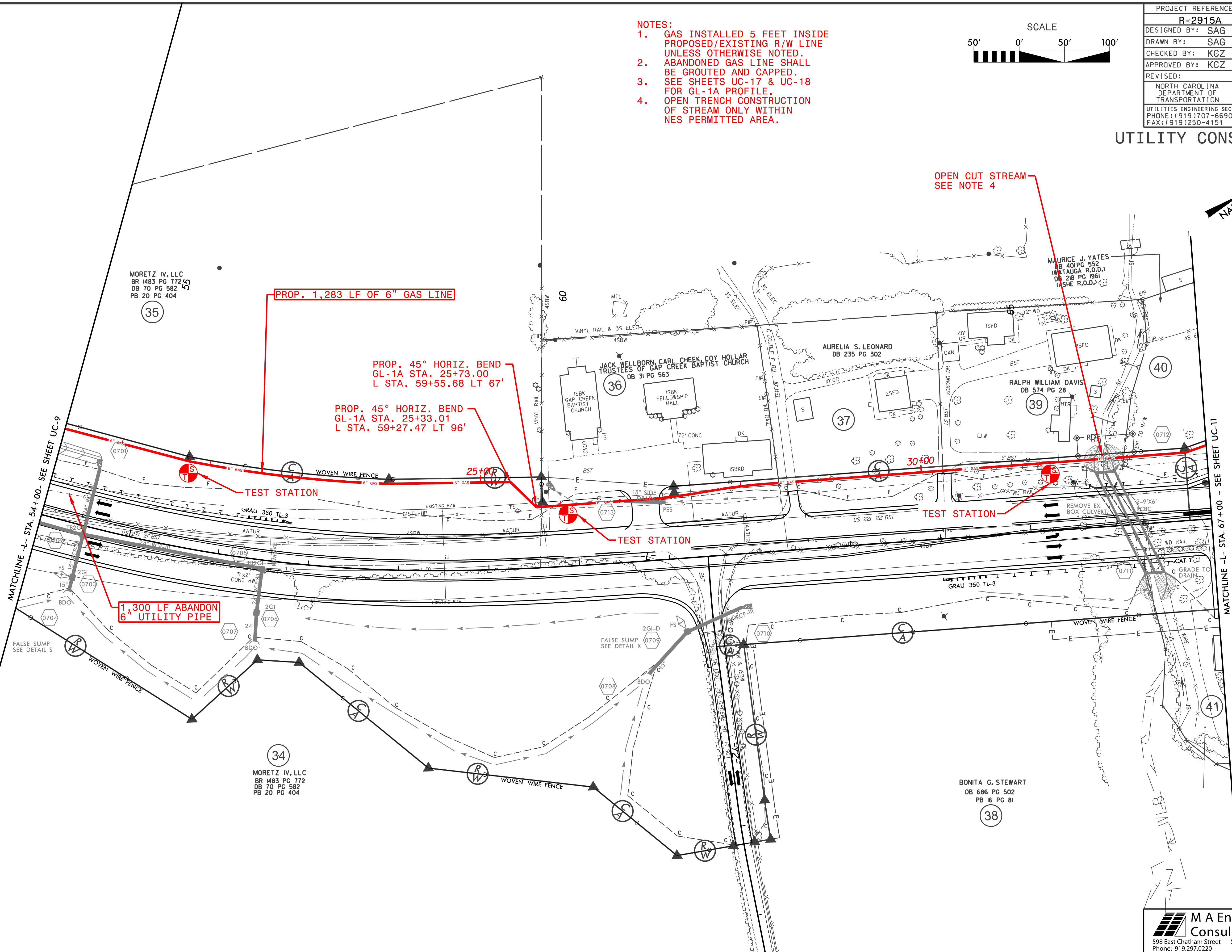
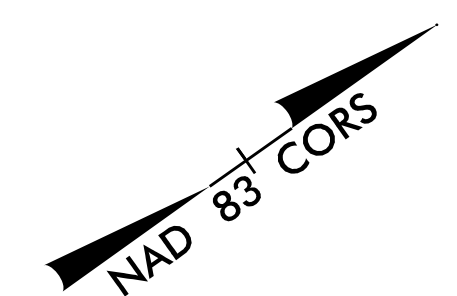


PROJECT REFERENCE NO.	SHEET NO.
R-2915A	UC-10
DESIGNED BY: SAG	
DRAWN BY: SAG	
CHECKED BY: KCZ	
APPROVED BY: KCZ	
REVISED:	
NORTH CAROLINA DEPARTMENT OF TRANSPORTATION UTILITIES ENGINEERING SEC. PHONE: (919) 707-6690 FAX: (919) 250-4151	
UTILITY CONSTRUCTION PLANS ONLY	



- NOTES:
1. GAS INSTALLED 5 FEET INSIDE PROPOSED/EXISTING R/W LINE UNLESS OTHERWISE NOTED.
  2. ABANDONED GAS LINE SHALL BE GROUTED AND CAPPED.
  3. SEE SHEETS UC-17 & UC-18 FOR GL-1A PROFILE.
  4. OPEN TRENCH CONSTRUCTION OF STREAM ONLY WITHIN NES PERMITTED AREA.



MORETZ IV, LLC  
 BR 1483 PG 172  
 DB 70 PG 582  
 PB 20 PG 404  
 55

35

PROP. 1,283 LF OF 6" GAS LINE

PROP. 45° HORIZ. BEND  
 GL-1A STA. 25+73.00  
 L STA. 59+55.68 LT 67'

PROP. 45° HORIZ. BEND  
 GL-1A STA. 25+33.01  
 L STA. 59+27.47 LT 96'

1,300 LF ABANDON  
 6" UTILITY PIPE

34

MORETZ IV, LLC  
 BR 1483 PG 172  
 DB 70 PG 582  
 PB 20 PG 404

37

39

40

41

BONITA G. STEWART  
 DB 686 PG 502  
 PB 16 PG 81  
 38

REVISIONS

\$FILE\$

\$DATE\$