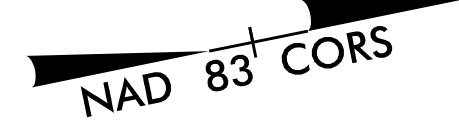
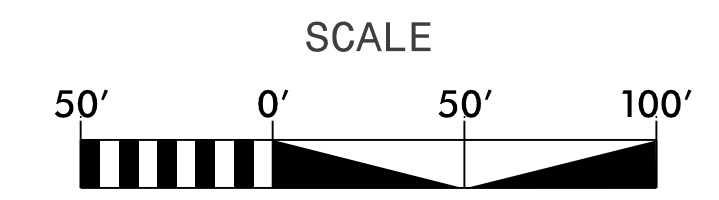
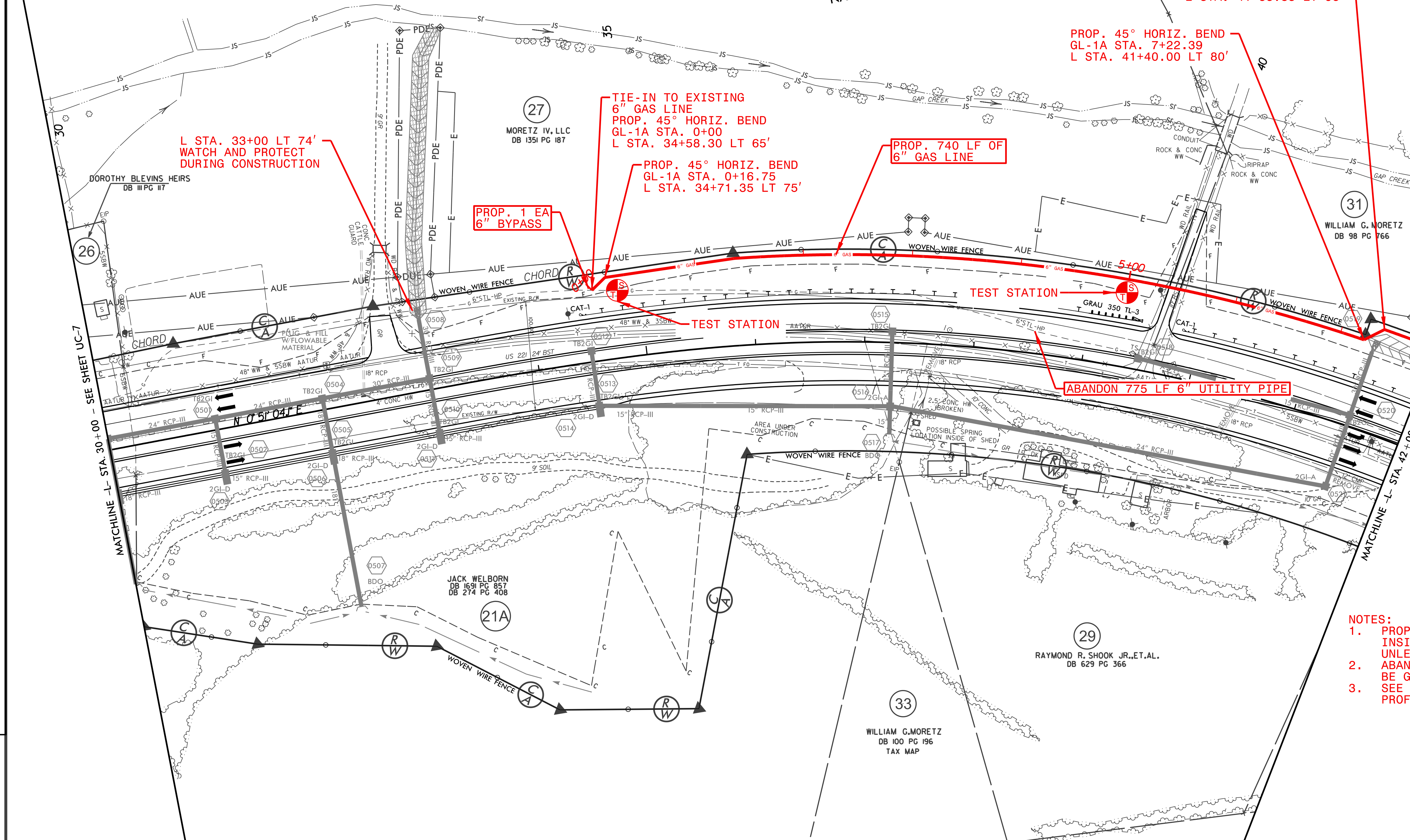


PROJECT REFERENCE NO.	SHEET NO.
R-2915A	UC-8
DESIGNED BY: SAG	
DRAWN BY: SAG	
CHECKED BY: KCZ	
APPROVED BY: KCZ	
REVISED:	
NORTH CAROLINA DEPARTMENT OF TRANSPORTATION	UTILITY CONSTRUCTION PLANS ONLY
UTILITIES ENGINEERING SEC. PHONE: (919) 707-6690 FAX: (919) 250-4151	



UTILITY CONSTRUCTION



L STA. 33+00 LT 74'
WATCH AND PROTECT
DURING CONSTRUCTION

TIE-IN TO EXISTING
6" GAS LINE
PROP. 45° HORIZ. BEND
GL-1A STA. 0+00
L STA. 34+58.30 LT 65'

PROP. 45° HORIZ. BEND
GL-1A STA. 0+16.75
L STA. 34+71.35 LT 75'

PROP. 1 EA
6" BYPASS

PROP. 740 LF OF
6" GAS LINE

PROP. 45° HORIZ. BEND
GL-1A STA. 7+22.39
L STA. 41+40.00 LT 80'

PROP. 45° HORIZ. BEND
GL-1A STA. 7+43.39
L STA. 41+53.83 LT 95'

ABANDON 775 LF 6" UTILITY PIPE

- NOTES:**
1. PROPOSED GAS INSTALLED 5 FEET INSIDE PROPOSED/EXISTING R/W LINE UNLESS OTHERWISE NOTED.
 2. ABANDONED GAS LINE SHALL BE GROUTED AND CAPPED.
 3. SEE SHEET UC-17 FOR GL-1A PROFILE.

REVISIONS

MATCHLINE -L- STA. 30+00 - SEE SHEET UC-7

MATCHLINE -L- STA. 42+00 - SEE SHEET UC-9

\$FILE\$
\$DATE\$