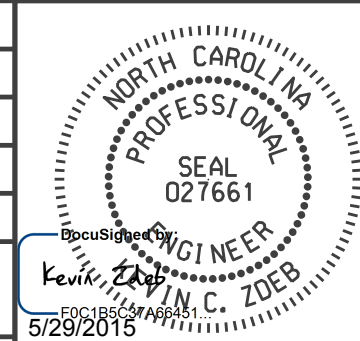
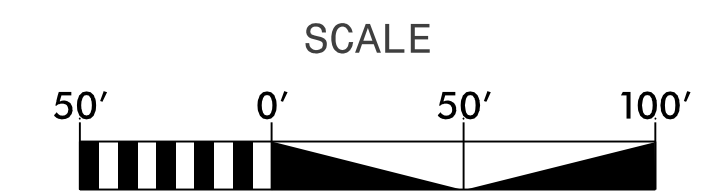
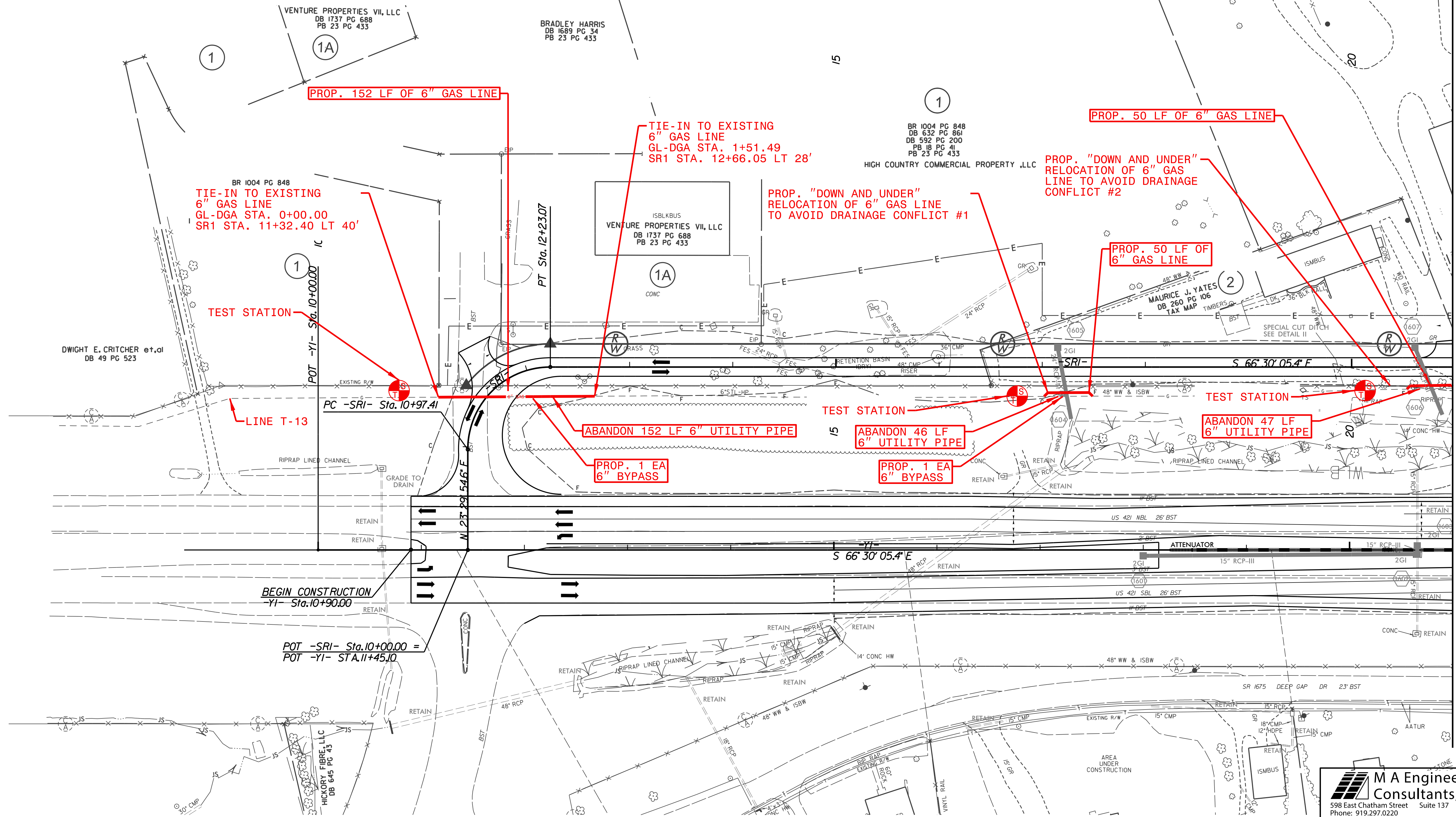


PROJECT REFERENCE NO.	SHEET NO.
R-2915A	UC-4
DESIGNED BY: SAG	
DRAWN BY: SAG	
CHECKED BY: KCZ	
APPROVED BY: KCZ	
REVISED:	
NORTH CAROLINA DEPARTMENT OF TRANSPORTATION UTILITIES ENGINEERING SEC. PHONE: (919) 707-6690 FAX: (919) 250-4151 UTILITY CONSTRUCTION PLANS ONLY	

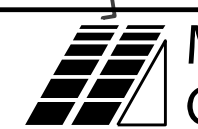
- NOTES:**
1. PROPOSED GAS INSTALLED 5 FEET INSIDE PROPOSED/EXISTING R/W LINE UNLESS OTHERWISE NOTED.
  2. EXISTING DISTRIBUTION 2" GAS MAIN OWNED BY FNG AND LOCATED IN A 20' EASEMENT OUTSIDE OF THE NCDOT R/W SHALL BE RELOCATED BY FNG IN THE AREAS OF CONFLICT WITH -SR1-. CONTRACTOR TO VERIFY LOCATION OF EXISTING 2" GAS MAIN.
  3. EXISTING DRIVEWAY THAT SERVES THE DOLLAR GENERAL STORE AND OTHER PARCELS MUST KEEP ONE LANE OPEN AT ALL TIMES FOR TRAFFIC.
  4. ABANDONED GAS LINES NOTED ON THIS SHEET SHALL BE REMOVED.
  5. SEE SHEET UC-16 FOR GL-DGA PROFILE.
  6. ONE TEMPORARY BYPASS SHALL BE INSTALLED TO ENCOMPASS THE TIE-IN POINTS FOR GL-DGA AND OPEN TRENCHED ACROSS THE DOLLAR GENERAL DRIVEWAY. TEMPORARY BYPASS PIPING SHALL BE REMOVED ONCE NEW GAS MAIN IS PLACED INTO SERVICE.
  7. "DOWN AND UNDER" AND GL-DGA RELOCATIONS SHALL BE INSTALLED IN SAME HORIZONTAL LOCATION AS THE EXISTING PIPE.
  8. ONE TEMPORARY BYPASS SHALL BE INSTALLED TO ENCOMPASS THE WESTERN TIE-IN POINT OF DRAINAGE CONFLICT #1 AND THE EASTERN TIE-IN POINT OF DRAINAGE CONFLICT #2.
  9. RELOCATIONS ON LINE T-13 SHALL BE COMPLETED BEFORE THE NEW LAUNCHER & RECEIVER STATION IS PUT INTO SERVICE.



Conflict	Size	Drainage Pipe			Gas Pipe			Proposed Clearance
		Top	Invert	Bottom	Top	Invert	Bottom	
1	24" RCP	3008.72	3006.47	3006.22	3002.22	3001.69	3001.67	4 ft
2	24" RCP	2999.77	2997.52	2997.27	2993.27	2992.74	2992.72	4 ft



MATCHLINE YI STA. 21+00 SEE SHEET UC-5



**M A Engineering Consultants, Inc.**  
 598 East Chatham Street Suite 137 Cary, NC 27511  
 Phone: 919.297.0220 Fax: 919.297.0221