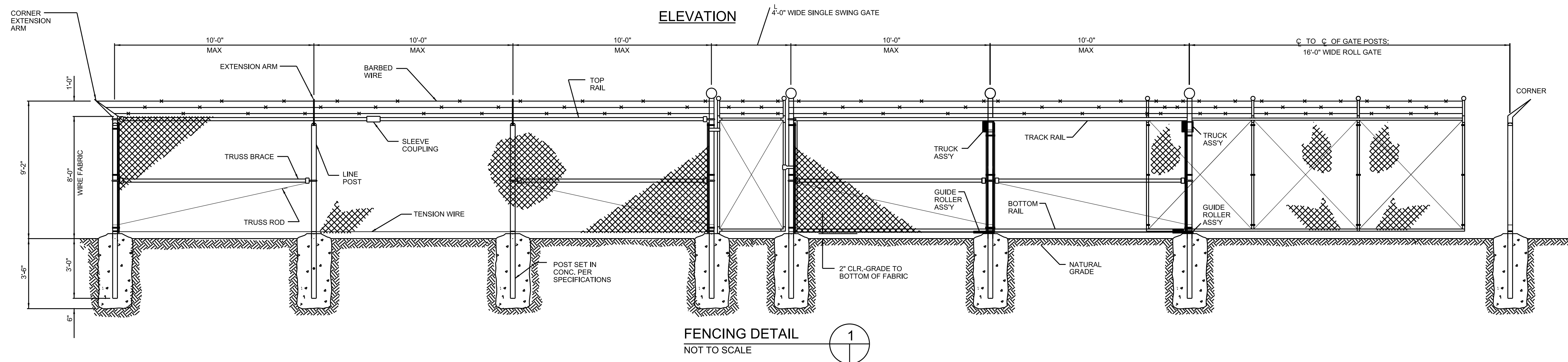
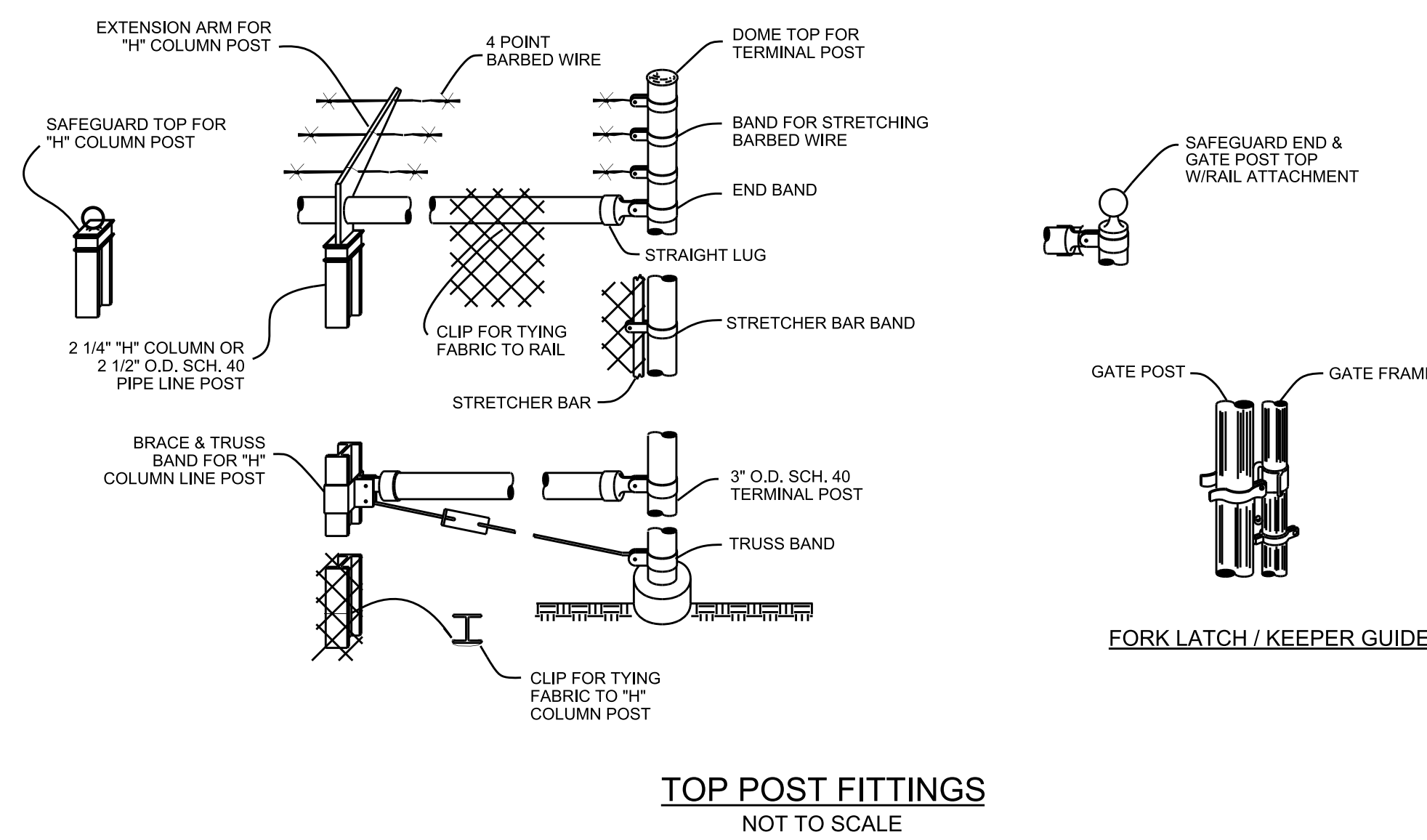


PROJECT REFERENCE NO. <i>R-2915A</i>	SHEET NO. <i>UC-3G</i>
DESIGNED BY: <i>KCZ</i>	
DRAWN BY: <i>SAG</i>	
CHECKED BY: <i>KCZ</i>	
APPROVED BY: <i>KCZ</i>	
REVISED:	
NORTH CAROLINA DEPARTMENT OF TRANSPORTATION UTILITIES ENGINEERING SEC. PHONE: (919) 707-6690 FAX: (919) 250-4151	
UTILITY CONSTRUCTION PLANS ONLY	

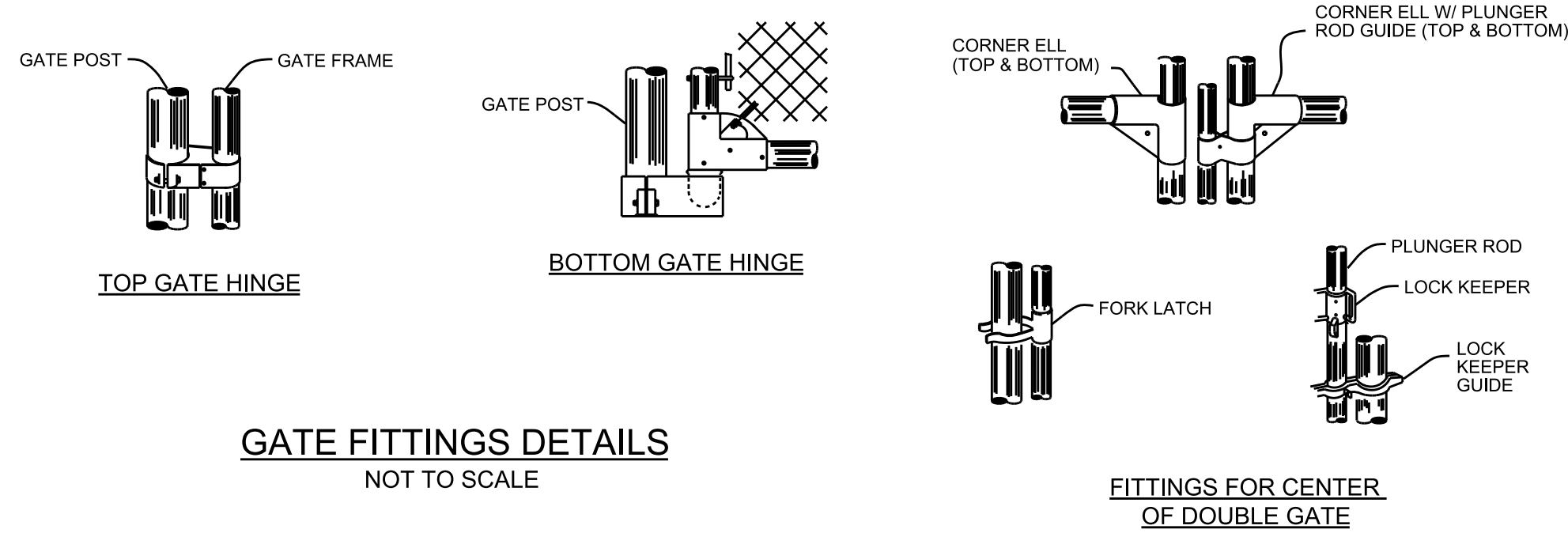
UTILITY CONSTRUCTION



FENCING DETAIL
NOT TO SCALE



TOP POST FITTINGS
NOT TO SCALE



GATE FITTINGS DETAILS
NOT TO SCALE

FITTINGS FOR CENTER
OF DOUBLE GATE

CHAIN LINK FENCE SPECIFICATIONS

1. INSTALLATION:

- 1.1. FENCE ADDITION SHALL BE PLUMB AND TRUE TO LINE, CHAIN LINK FABRIC SHALL BE TAUT AND PROPERLY SECURED, CORNER BRACES AND DIAGONAL BRACES SHALL BE PROPERLY PLACED TO PREVENT SAGGING. THE COMPLETE INSTALLATION SHALL BE INSTALLED BY SKILLED AND EXPERIENCED FENCE ERECTORS, IN A WORKMANLIKE MANNER, IN ACCORDANCE WITH GOOD CONSTRUCTION PRACTICE AND IN ACCORDANCE WITH ALL LOCAL APPLICABLE CODES.
- 1.2. ALL DIMENSIONS, ELEVATIONS AND LOCATIONS SHALL BE VERIFIED PRIOR TO STARTING WORK.
- 1.3. CALL 811 PRIOR TO DIGGING FOR POST FOOTINGS

2. MATERIAL:

- 2.1. ALL MATERIALS TO BE GALVANIZED (ZINC COATED) OR ALUMINIZED (ALUMINUM COATED), UNLESS SPECIFIED OTHERWISE. GALVANIZED MATERIAL SHALL BE COATED WITH 2 OZ. PER SQUARE FOOT OF HOT-DIPPED ZINC.
- 2.2. FENCE CHAIN LINK FABRIC TO MEET THE FOLLOWING REQUIREMENTS: #9 GAUGE WIRE, 2" MESH, TOP AND BOTTOM EDGES TWISTED AND BARBED
- 2.3. RAZOR WIRE TO MEET THE FOLLOWING REQUIREMENTS: 18" DIAMETER LOOP, 6" SPREAD, LOCATE AT TOP AND BOTTOM OF THE FENCE.
- 2.4. BARBED WIRE TO MEET THE FOLLOWING REQUIREMENTS: #12-1/2 GAUGE STEEL WIRE WITH ALUMINUM COATING, #14 GAUGE, FOUR-POINT BARBS SPACED AT 5" ON CENTER (MAX).
- 2.5. BOTTOM WIRE SHALL BE #7 GAUGE.
- 2.6. SINGLE EXTENSION ARMS FOR BARBED WIRE SHALL BE #12 GAUGE AND POINT OUTWARD AT AN ANGLE OF 45 DEGREES.
- 2.7. LINE POSTS SHALL BE 2-1/2" DIAMETER, SCHEDULE 40 PIPE SPACED AT 10'-0" ON CENTER (MAX).
- 2.8. TOP RAIL SHALL BE 1-5/8" DIAMETER, SCHEDULE 40 PIPE.
- 2.9. END, CORNER AND GATE POSTS SHALL BE 3" DIAMETER, SCHEDULE 40 PIPE.
- 2.10. CONCRETE POST FOOTINGS FOR LINE POSTS SHALL BE INSTALLED TO A MINIMUM DEPTH OF 3'-3" AND HAVE A MINIMUM DIAMETER OF 10". POSTS MUST BE EMBEDDED IN THE CONCRETE FOOTING TO A MINIMUM DEPTH OF 3'-0". THERE SHALL BE A MINIMUM SPACING OF 3" BETWEEN BOTTOM OF THE POST AND BOTTOM OF THE FOOTING. CONCRETE SHALL HAVE STRENGTH OF 3000 PSI AT 28 DAYS.
- 2.11. CONCRETE POST FOOTINGS FOR GATE AND CORNER POSTS SHALL BE INSTALLED TO A MINIMUM DEPTH OF 3'-6" AND HAVE A MINIMUM DIAMETER OF 1'-4" FOR POSTS ≤ 4" DIAMETER. FOOTINGS FOR POSTS > 4" DIAMETER SHALL HAVE A MINIMUM DIAMETER OF 2'-0". POSTS MUST BE EMBEDDED IN THE CONCRETE FOOTING TO A MINIMUM DEPTH OF 3'-0". THERE SHALL BE A MINIMUM SPACING OF 6" BETWEEN BOTTOM OF THE POST AND BOTTOM OF THE FOOTING. CONCRETE SHALL HAVE STRENGTH OF 3000 PSI AT 28 DAYS.
- 2.12. BRACING RAILS AT ENDS, CORNERS AND GATES SHALL BE 1-1/2" DIAMETER, SCHEDULE 40 PIPE SPACED EVENLY BETWEEN TOP RAIL AND BOTTOM WIRE.

- 2.13. TRUSS RODS, IF NECESSARY, SHALL BE 1/2" DIAMETER MINIMUM.
- 2.14. STRETCHER BAR SHALL ENGAGE EACH FABRIC LINK. BANDS INSTALLED TO SECURE STRETCHER BAR SHALL BE LOCATED WITHIN 4" OF TOP RAIL AND BOTTOM WIRE AND SPACED AT 1'-2" ON CENTER (MAX).
- 2.15. CLAMPS AND BANDS SHALL UTILIZE 1/2" BOLTING (MIN).
- 2.16. TIE WIRE FOR POSTS SHALL BE #9 GAUGE WIRE SPACED AT 1'-2" ON CENTER (MAX).
- 2.17. TIE WIRE FOR TOP AND BRACING RAIL SHALL BE #9 GAUGE WIRE SPACED AT 2'-0" ON CENTER (MAX). WHERE HORIZONTAL RAILS AND POSTS INTERSECT, TIE WIRE MUST BE INSTALLED ON EACH SIDE OF THE POST ALONG THE HORIZONTAL RAIL; MAXIMUM SPACING FROM POST IS 2'-0".

3. FENCE SECTION:

- 3.1. HEIGHT OF FENCE SHALL BE A MINIMUM OF 9'-0" TOTAL. CHAIN LINK FABRIC MUST BE MINIMUM HEIGHT OF 8'-0" WITH THREE STRANDS OF BARBED WIRE SECURELY ATTACHED TO SINGLE EXTENSION ARMS ALONG TOP OF CHAIN LINK FABRIC; TOP STRAND TO BE 1'-0" ABOVE TOP OF CHAIN LINK FABRIC. THERE SHALL BE LESS THAN 2" OF SPACING BETWEEN GROUND AND CHAIN LINK FABRIC.

4. GATES:

- 4.1. GATES CAN BE CUSTOM SIZE. NORMAL ACCESS GATES SHALL BE A MINIMUM WIDTH OF 3'-0". VEHICLE ACCESS GATES SHALL BE A MINIMUM WIDTH OF 16'-0". FINISHED GRADE ALONG ALL GATES SHALL BE LEVEL. SLIDING GATES SHALL HAVE A WHEEL CARRIER TRACK THAT IS 2'-0" (MIN) WIDE CONCRETE.
- 4.2. ALL WALK GATES SHALL BE EQUIPPED WITH A PANIC BAR EXIT KIT AND A BACKING PLATE TO PREVENT OPERATION OF PANIC BAR FROM OUTSIDE OF FENCE.