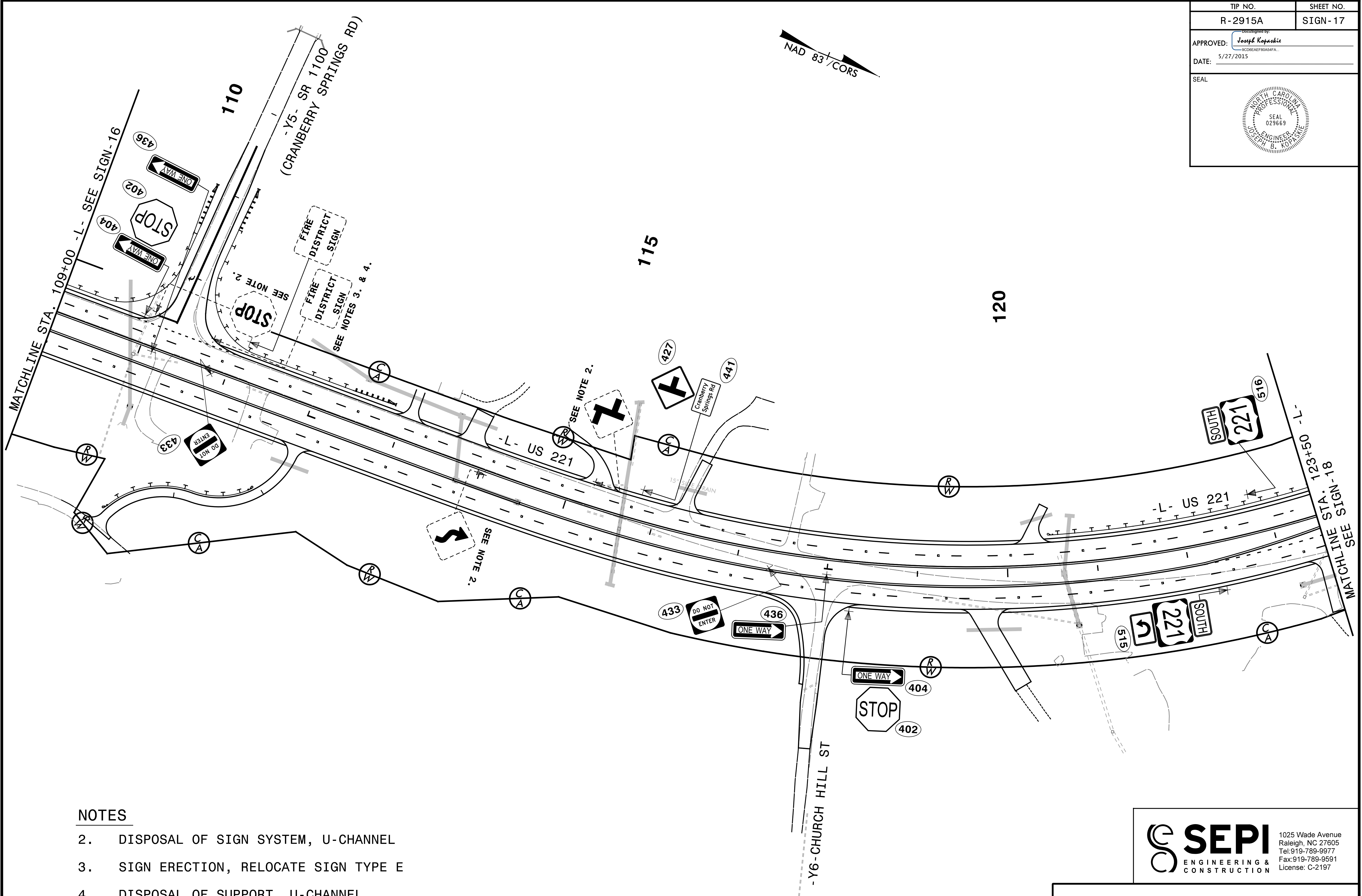


TIP NO. R-2915A	SHEET NO. SIGN-17
Designed by: APPROVED: <i>Joseph Kopaskie</i> <small>SCDMEAF80A54FA...</small>	
DATE: 5/27/2015	
SEAL	



NOTES

- 2. DISPOSAL OF SIGN SYSTEM, U-CHANNEL
- 3. SIGN ERECTION, RELOCATE SIGN TYPE E
- 4. DISPOSAL OF SUPPORT, U-CHANNEL

SEPI
 ENGINEERING & CONSTRUCTION
 1025 Wade Avenue
 Raleigh, NC 27605
 Tel: 919-789-9977
 Fax: 919-789-9591
 License: C-2197

**EXISTING & PROPOSED
SIGN DETAIL**