


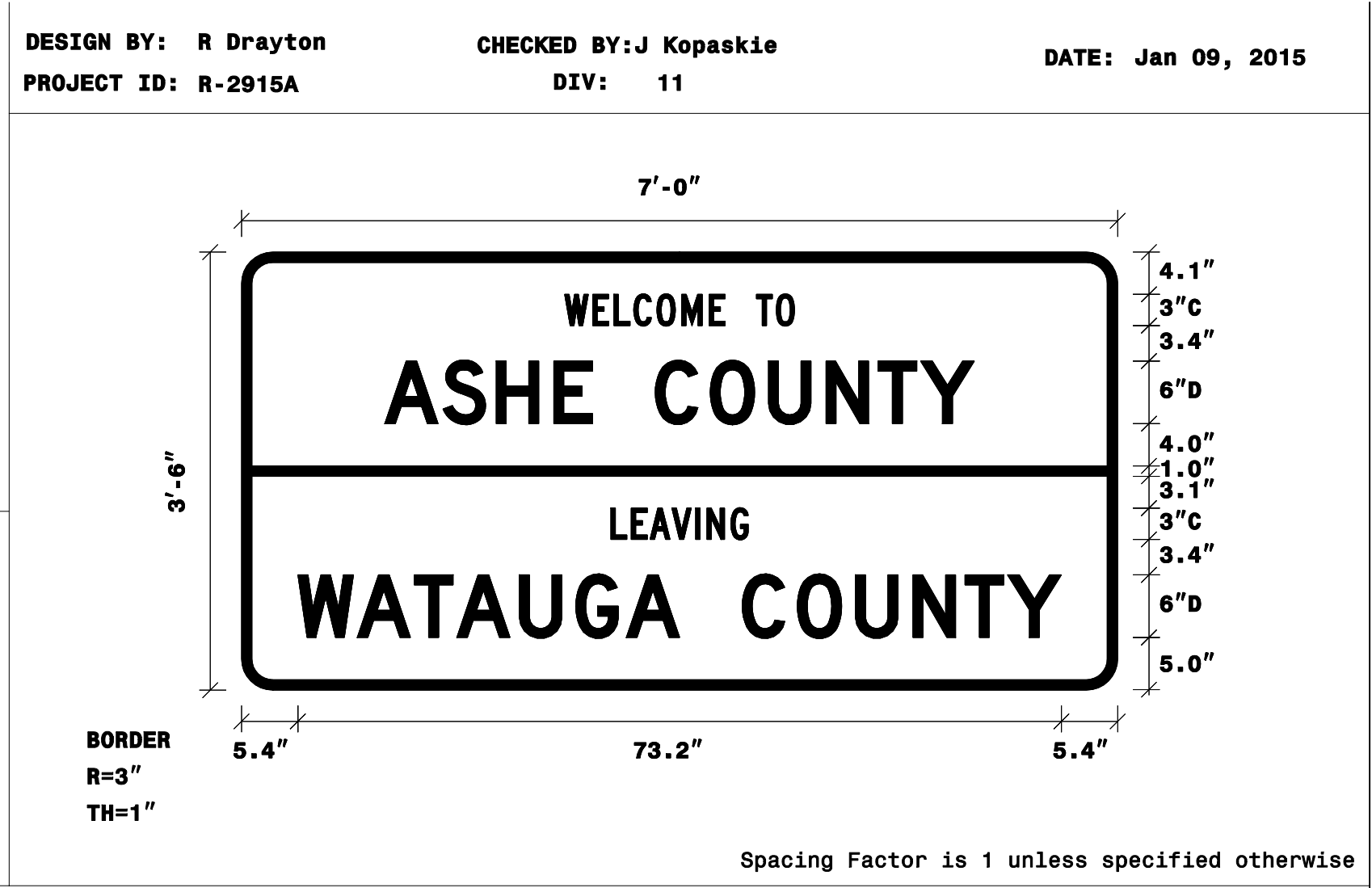
TIP NO. R-2915A	SHEET NO. SIGN-4F
APPROVED: <i>Joseph Kopaskie</i> <small>30CDEAEF80AS4FA...</small>	
DATE: 5/27/2015	
SEAL	
	

SIGN NUMBER: 304
 TYPE: D
 QUANTITY: 1
 SIGN WIDTH: 7'-0"
 HEIGHT: 3'-6"
 TOTAL AREA: 24.5 Sq.Ft.
 BORDER TYPE: FLUSH
 RECESS: 0"
 WIDTH: 1"
 RADII: 3"
 NO. Z BARS:
 LENGTH:

BACKG COLOR: Green
 COPY COLOR: White

SYMBOL	X	Y	WID	HT

MAT'L: 0.125" (3.2 mm) ALUMINUM



USE NOTES: 1,2
 1. Legend and border(except those that are colored black) shall be direct applied Grade C sheeting.
 2. Background shall be Grade C reflective sheeting.

LETTER POSITIONS

Letter spacings are to start of next letter

	W	E	L	C	O	M	E	T	O												Series/Size Text Length	
	31	2.7	2	1.9	2.2	2.4	2.6	1.5	3	1.9	1.8	31									C 2000	
																						22.1
																						D 2000
	13.7	5.6	5.1	5.5	3.7	6	5.3	5.6	5.5	5	4.1	5.2	13.7									56.5
																						C 2000
	35.4	1.9	1.8	2.1	2.3	1.1	2.3	1.7	35.4													13.2
																						D 2000
	5.4	5.7	5.5	4.1	6	5.4	4.9	5.1	6	5.3	5.6	5.5	5	4.1	5.2	5.4						73.2

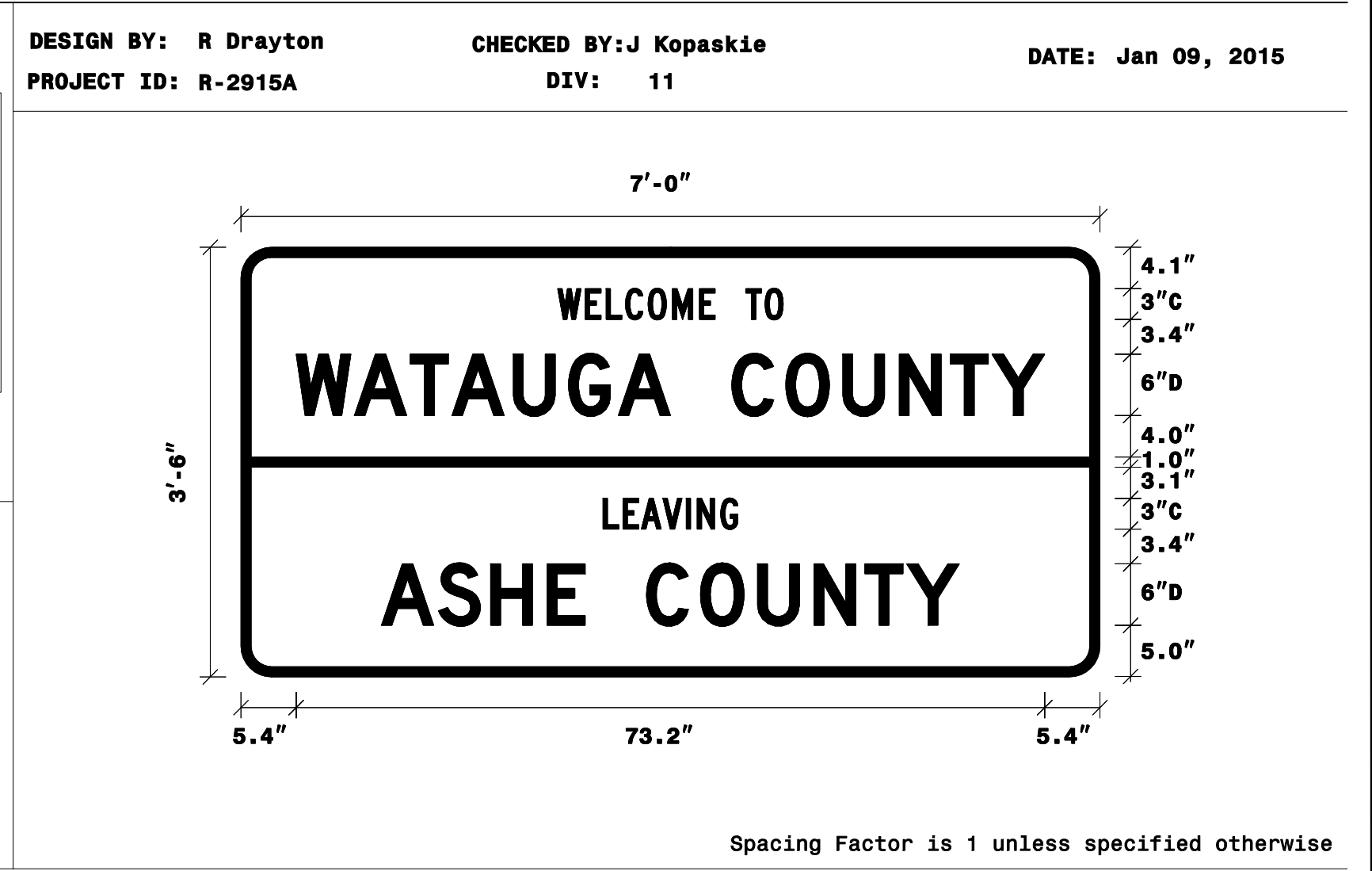
FILENAME: Sign Designs NORTH CAROLINA D.O.T. SIGN DETAIL

SIGN NUMBER: 305
 TYPE: D
 QUANTITY: 1
 SIGN WIDTH: 7'-0"
 HEIGHT: 3'-6"
 TOTAL AREA: 24.5 Sq.Ft.
 BORDER TYPE: FLUSH
 RECESS: 0"
 WIDTH: 1"
 RADII: 3"
 NO. Z BARS:
 LENGTH:

BACKG COLOR: Green
 COPY COLOR: White

SYMBOL	X	Y	WID	HT

MAT'L: 0.125" (3.2 mm) ALUMINUM




USE NOTES: 1,2
 1. Legend and border(except those that are colored black) shall be direct applied Grade C sheeting.
 2. Background shall be Grade C reflective sheeting.

LETTER POSITIONS

Letter spacings are to start of next letter

	W	E	L	C	O	M	E	T	O												Series/Size Text Length	
	31	2.7	2	1.9	2.2	2.4	2.6	1.5	3	1.9	1.8	31										C 2000
																						22.1
																						D 2000
	5.4	5.7	5.5	4.1	6	5.4	4.9	5.1	6	5.3	5.6	5.5	5	4.1	5.2	5.4						73.2
																						C 2000
	35.4	2	1.8	2.1	2.3	1.1	2.3	1.7	35.4													13.2
																						D 2000
	13.7	5.6	5.1	5.5	3.7	6	5.3	5.6	5.5	5	4.1	5.2	13.7									56.5

FILENAME: Sign Designs NORTH CAROLINA D.O.T. SIGN DETAIL



1025 Wade Avenue
 Raleigh, NC 27605
 Tel: 919-789-9977
 Fax: 919-789-9591
 License: C-2197

SIGN DESIGNS

5/22/2015
 g:\transportation\TRI13.017.06 NCDOT 2012 Traffic LSA\TRI13.017.06 (R-2915A) Signing & PMP\Signing\Engseed 6-11-12.dgn
 J.Kopaskie