

PROJECT REFERENCE NO.	SHEET NO.
R-2915A	EC-33/CONST JB
RW SHEET NO.	
ROADWAY DESIGN ENGINEER	HYDRAULICS ENGINEER

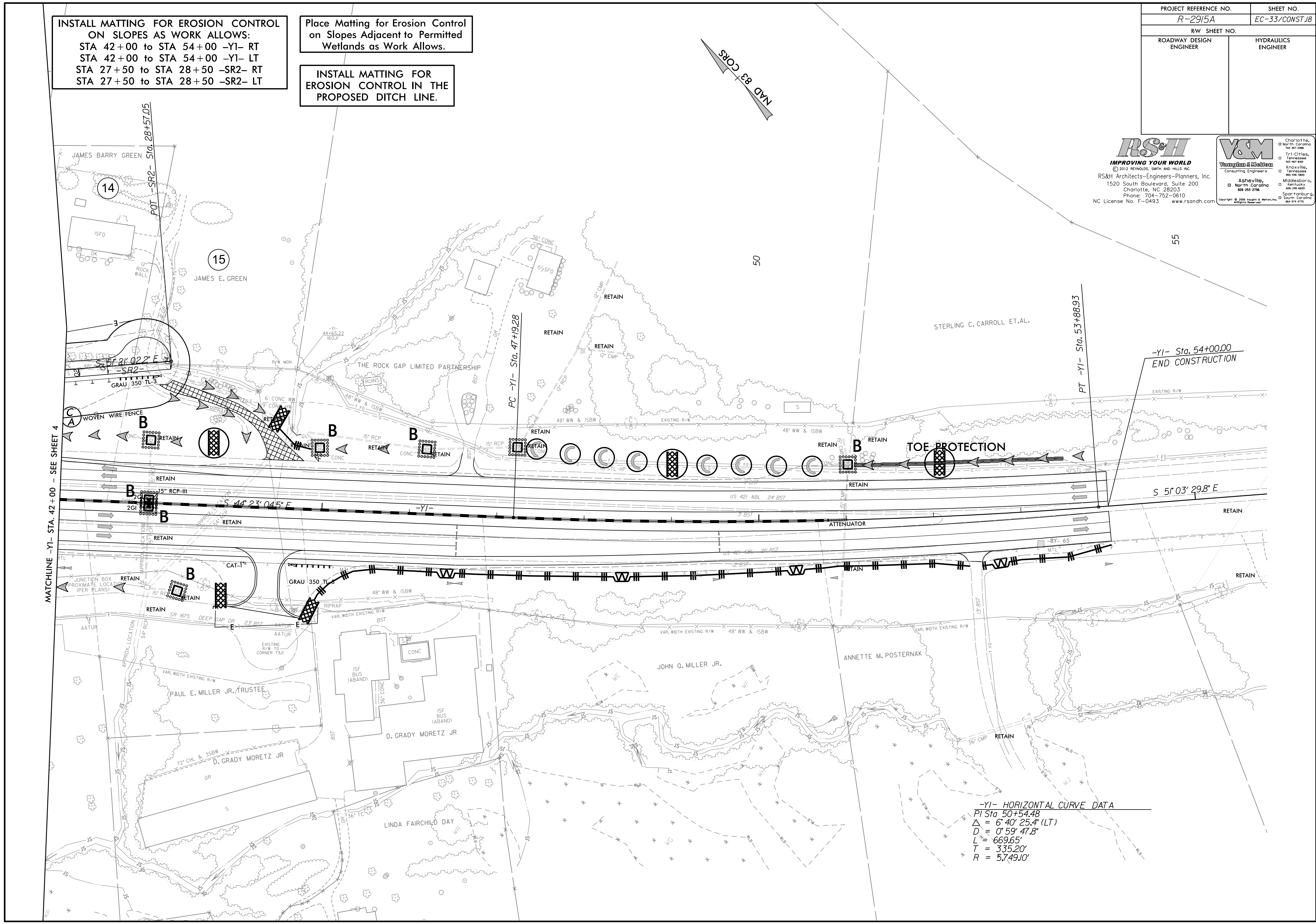
**RS&H**  
**IMPROVING YOUR WORLD**  
 © 2012 REYNOLDS, SMITH AND HILLS INC.  
 RS&H Architects-Engineers-Planners, Inc.  
 1520 South Boulevard, Suite 200  
 Charlotte, NC 28203  
 Phone: 704-752-0610  
 NC License No. F-0493 www.rsandh.com

**V&M**  
**Wangman & Watson**  
 Consulting Engineers  
 Asheville, North Carolina  
 828-253-2796  
 Copyright © 2005 Wangman & Watson, Inc.  
 All Rights Reserved

INSTALL MATTING FOR EROSION CONTROL ON SLOPES AS WORK ALLOWS:  
 STA 42+00 to STA 54+00 -Y1- RT  
 STA 42+00 to STA 54+00 -Y1- LT  
 STA 27+50 to STA 28+50 -SR2- RT  
 STA 27+50 to STA 28+50 -SR2- LT

Place Matting for Erosion Control on Slopes Adjacent to Permitted Wetlands as Work Allows.

INSTALL MATTING FOR EROSION CONTROL IN THE PROPOSED DITCH LINE.



-Y1- HORIZONTAL CURVE DATA

PI Sta	50+54.48
Δ	6° 40' 25.4" (LT)
D	0° 59' 47.8"
L	669.65'
T	335.20'
R	5,749.10'

\$FILES\$

\$DATE\$