

Place Matting for Erosion Control
on Slopes Adjacent to Permitted
Wetlands as Work Allows.

INSTALL MATTING FOR
EROSION CONTROL IN THE
PROPOSED DITCH LINE.

PROJECT REFERENCE NO. <i>R-2915A</i>	SHEET NO. <i>EC-32/CONST.17</i>
RW SHEET NO.	
ROADWAY DESIGN ENGINEER	HYDRAULICS ENGINEER

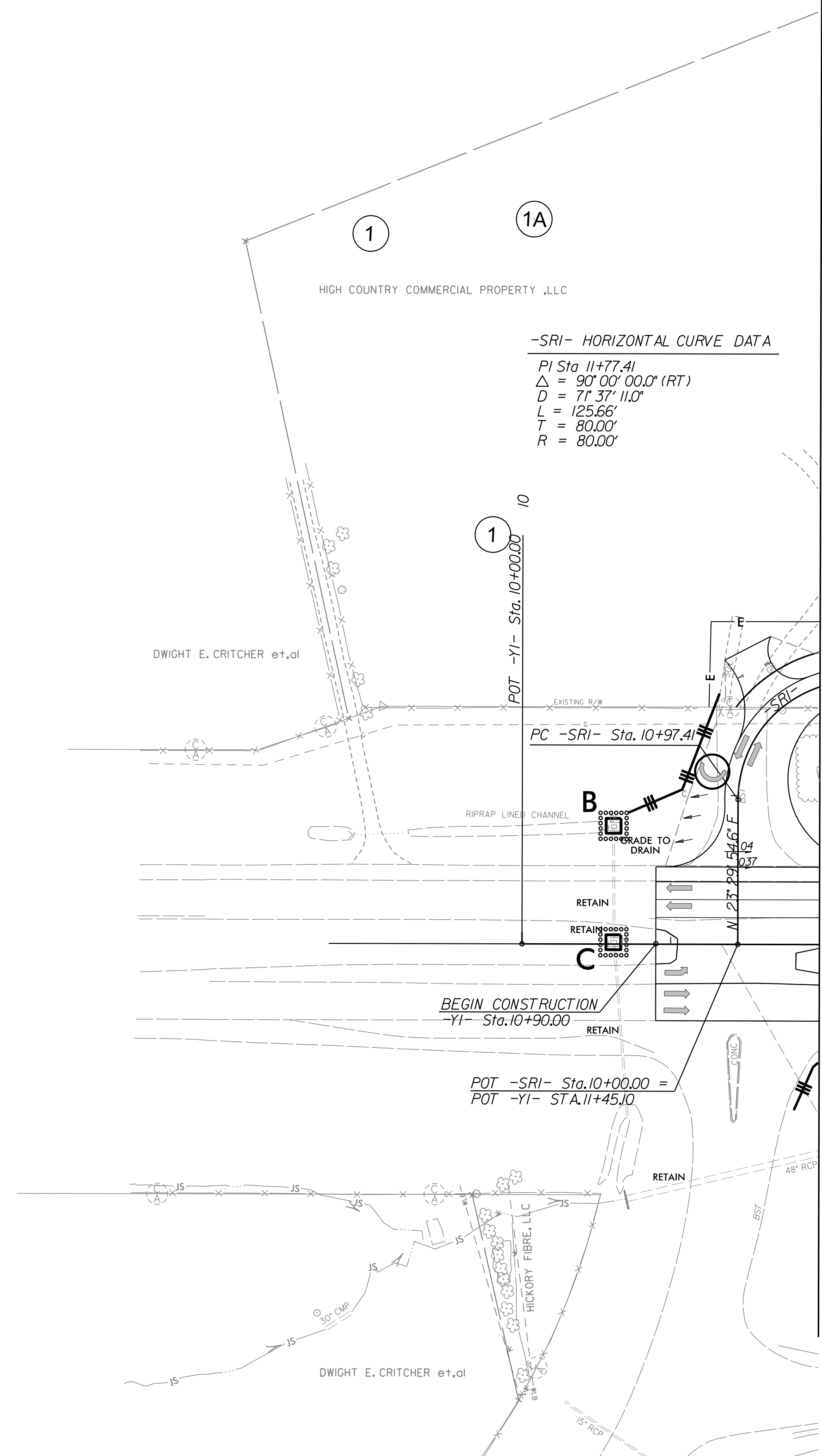
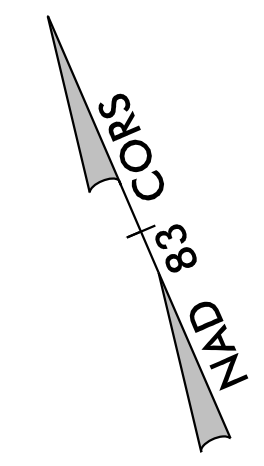
RS&H
IMPROVING YOUR WORLD
© 2012 REYNOLDS, SMITH AND HILLS INC.
RS&H Architects-Engineers-Planners, Inc.
1520 South Boulevard, Suite 200
Charlotte, NC 28203
Phone: 704-752-0610
NC License No. F-0493 www.rsandh.com

V&M
Vought & Merson
Consulting Engineers
Asheville, North Carolina
828-253-2796

Charlotte, North Carolina 28203
Tri-Cities, Tennessee 423-81-8800
Knoxville, Tennessee 865-546-3800
Middleburg, Kentucky 606-766-8800
Spartanburg, South Carolina 864-534-6700

06/27/14 ROW REV: REVISED PROPERTY LINES AND ADDED PARCEL 1A WITH PROPERTY OWNER AND DEED REFERENCE. - KNW
00/05/15 ROW REV: REVISED ROW AND TCE ON PARCELS 1 AND 1A. - KNW

\$FILE\$
\$DATE\$



SEE SHEET 41 FOR -YI- PROFILE