

PROJECT REFERENCE NO. R-2915A	SHEET NO. EC-31/CONST.16
RW SHEET NO.	
ROADWAY DESIGN ENGINEER	HYDRAULICS ENGINEER

RS&H
IMPROVING YOUR WORLD
© 2012 REYNOLDS, SMITH AND HILLS INC.
RS&H Architects-Engineers-Planners, Inc.
1520 South Boulevard, Suite 200
Charlotte, NC 28203
Phone: 704-752-0610
NC License No. F-0493 www.rsandh.com

VEM
Vannoy & McMillan
Consulting Engineers
Asheville, North Carolina
828-253-2796
Copyright © 2005 Vannoy & McMillan, Inc.
All Rights Reserved

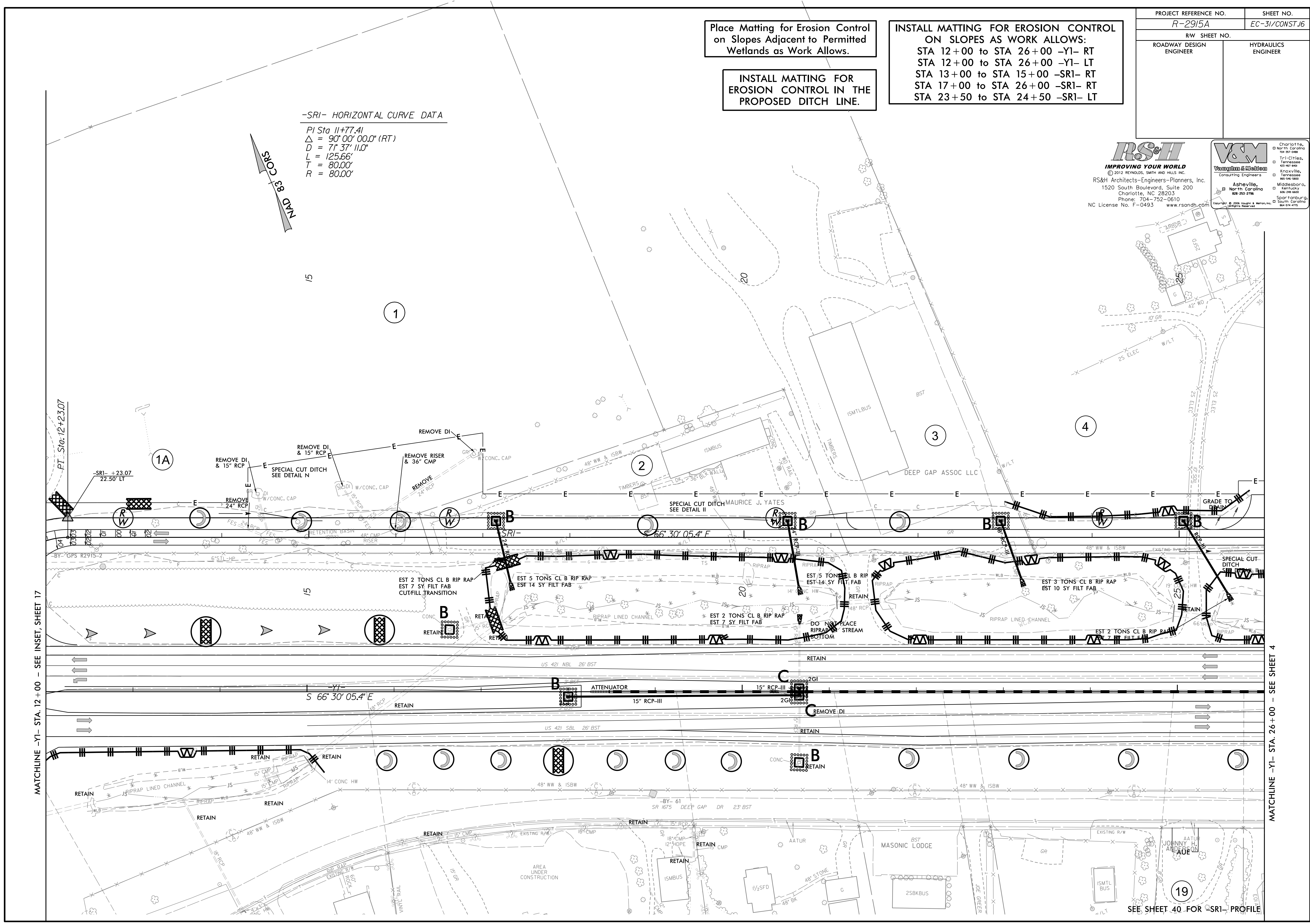
Place Matting for Erosion Control on Slopes Adjacent to Permitted Wetlands as Work Allows.

INSTALL MATTING FOR EROSION CONTROL ON SLOPES AS WORK ALLOWS:
STA 12+00 to STA 26+00 -Y1- RT
STA 12+00 to STA 26+00 -Y1- LT
STA 13+00 to STA 15+00 -SR1- RT
STA 17+00 to STA 26+00 -SR1- RT
STA 23+50 to STA 24+50 -SR1- LT

INSTALL MATTING FOR EROSION CONTROL IN THE PROPOSED DITCH LINE.

-SR1- HORIZONTAL CURVE DATA

PI Sta 11+77.41
Δ = 90°00'00.0" (RT)
D = 71°37'11.0"
L = 125.66'
T = 80.00'
R = 80.00'



MATCHLINE -Y1- STA. 12+00 - SEE INSET, SHEET 17

MATCHLINE -Y1- STA. 26+00 - SEE SHEET 4

SEE SHEET 40 FOR -SR1- PROFILE

\$DATE\$
\$FILE\$