

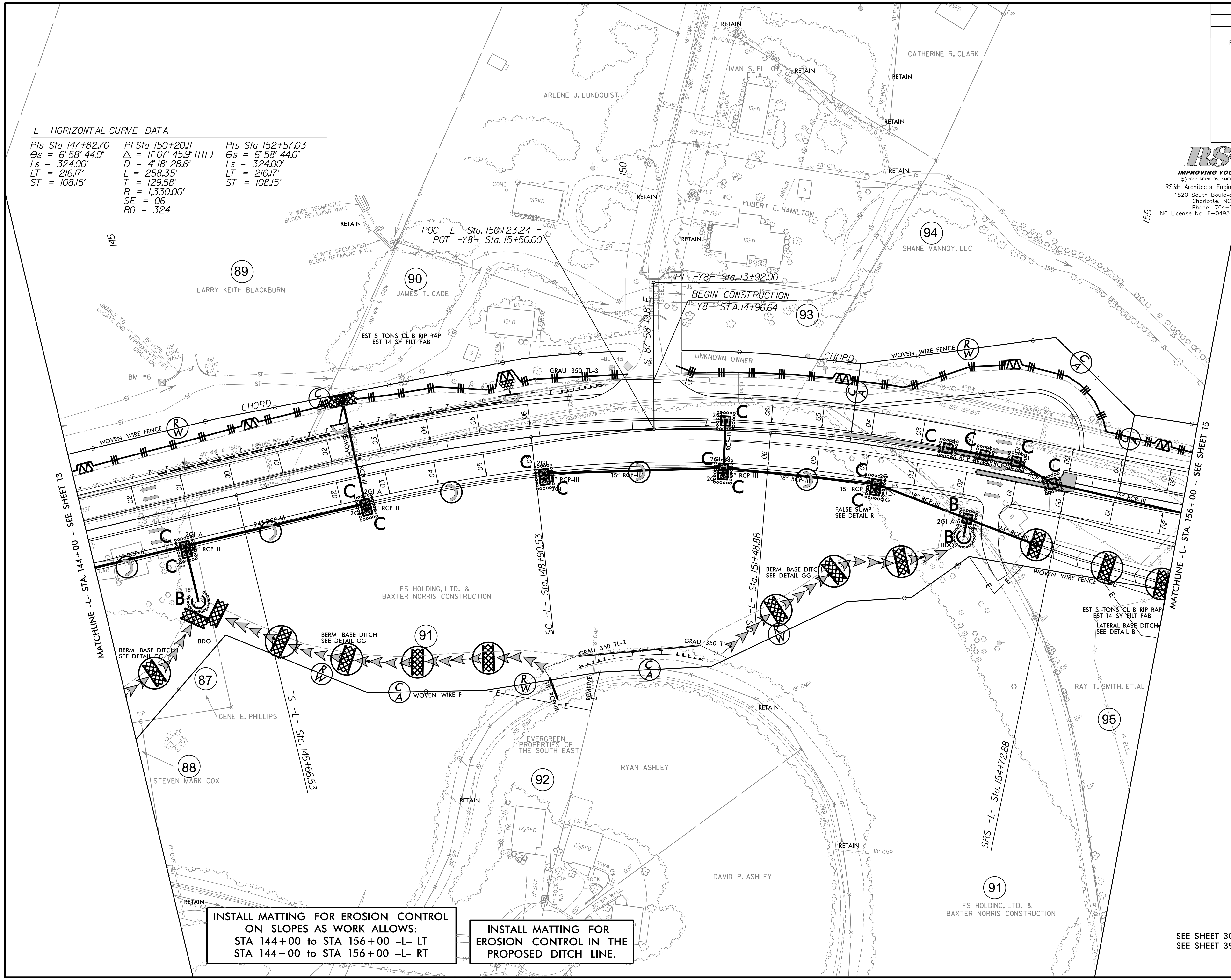
PROJECT REFERENCE NO.	SHEET NO.
R-2915A	EC-29/CONST.14
RW SHEET NO.	
ROADWAY DESIGN ENGINEER	HYDRAULICS ENGINEER

RS&H
IMPROVING YOUR WORLD
 © 2012 REYNOLDS, SMITH AND HILLS INC.
 RS&H Architects-Engineers-Planners, Inc.
 1520 South Boulevard, Suite 200
 Charlotte, NC 28203
 Phone: 704-752-0610
 NC License No. F-0493 www.rsandh.com

V&M
 Warrington & Melton
 Consulting Engineers
 Asheville, NC
 828-253-2796
 Copyright © 2005 Warrington & Melton, Inc. All Rights Reserved.

-L- HORIZONTAL CURVE DATA

PIs Sta 147+82.70	PI Sta 150+20.11	PIs Sta 152+57.03
Os = 6°58'44.0"	Δ = 1°07'45.9" (RT)	Os = 6°58'44.0"
Ls = 324.00'	D = 4°18'28.6"	Ls = 324.00'
LT = 216.17'	L = 258.35'	LT = 216.17'
ST = 108.15'	T = 129.58'	ST = 108.15'
	R = 1,330.00'	
	SE = 06	
	RO = 324	



INSTALL MATTING FOR EROSION CONTROL ON SLOPES AS WORK ALLOWS:
 STA 144+00 to STA 156+00 -L- LT
 STA 144+00 to STA 156+00 -L- RT

INSTALL MATTING FOR EROSION CONTROL IN THE PROPOSED DITCH LINE.

SEE SHEET 30 FOR -L- PROFILE
 SEE SHEET 39 FOR -Y8- PROFILE

\$DATE\$