

PROJECT REFERENCE NO.	SHEET NO.
R-2915A	EC-25/CONST.10
RW SHEET NO.	
ROADWAY DESIGN ENGINEER	HYDRAULICS ENGINEER

INSTALL MATTING FOR EROSION CONTROL ON SLOPES AS WORK ALLOWS: STA 94+00 TO STA 106+00 -L- LT

Place Matting for Erosion Control on Slopes Adjacent to Permitted Wetlands as Work Allows.

INSTALL MATTING FOR EROSION CONTROL IN THE PROPOSED DITCH LINE.

$L_s = 216.00'$   
 $LT = 144.01'$   
 $ST = 72.01'$

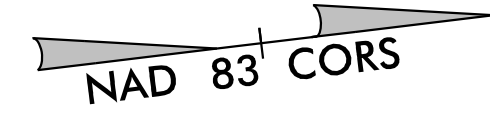
$L_s = 216.00'$   
 $LT = 144.01'$   
 $ST = 72.01'$

$L_s = 216.00'$   
 $LT = 144.01'$   
 $ST = 72.01'$

$PI Sta 100+20.16$   
 $\Delta = 1^\circ 35' 48.8"$   
 $D = 1740.014 (LT)$   
 $L = 117$   
 $T = 59$   
 $R = 3$   
 $SE = 1$   
 $RO = 1$

$PI Sta 103+87.82$   
 $\Delta = 8^\circ 43' 36.2" (LT)$   
 $D = 128.43.0'$   
 $L = 590.20'$   
 $T = 295.67'$   
 $R = 3,875.00'$   
 $SE = 04$   
 $RO = 590.2$

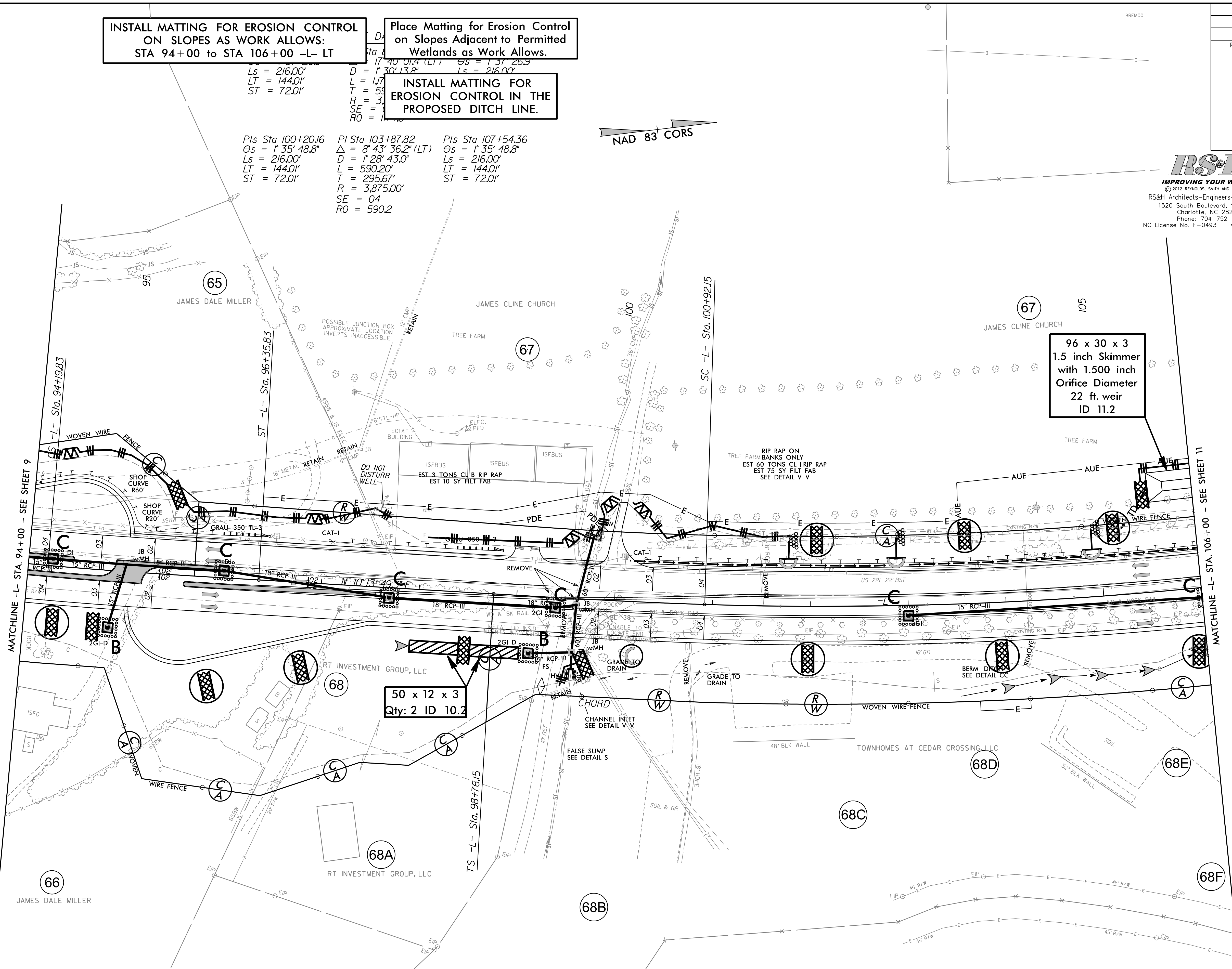
$PI Sta 107+54.36$   
 $\Delta = 1^\circ 35' 48.8"$   
 $D = 1740.014 (LT)$   
 $L = 117$   
 $T = 59$   
 $R = 3$   
 $SE = 1$   
 $RO = 1$



**RS&H**  
**IMPROVING YOUR WORLD**  
 © 2012 REYNOLDS, SMITH AND HILLS, INC.  
 RS&H Architects-Engineers-Planners, Inc.  
 1520 South Boulevard, Suite 200  
 Charlotte, NC 28203  
 Phone: 704-752-0610  
 99-971-9655 www.rsandh.com  
 NC License No. F-0493

**V&M**  
 Consulting Engineers  
 Asheville, NC  
 828-253-2798  
 919-971-9655

□ Boone, NC 828-255-9933  
 □ Charlotte, NC 704-461-8400  
 □ Knoxville, TN 865-546-5800  
 □ Spartanburg, SC 864-574-4775  
 □ Charleston, SC 843-974-5650  
 □ Mississippi, MS 662-948-6600  
 □ Norfolk, VA 757-247-0488  
 □ Atlanta, GA 404-427-3509  
 Copyright © 2006 Vaughn & Merton, Inc. All Rights Reserved.



96 x 30 x 3  
 1.5 inch Skimmer  
 with 1.500 inch  
 Orifice Diameter  
 22 ft. weir  
 ID 11.2

50 x 12 x 3  
 Qty: 2 ID 10.2

66 JAMES DALE MILLER

65 JAMES DALE MILLER

67 JAMES CLINE CHURCH

67 JAMES CLINE CHURCH

68 RT INVESTMENT GROUP, LLC

68C TOWNHOMES AT CEDAR CROSSING, LLC

68D

68E

68F

68B

\$DATE\$

SEE SHEET 26 FOR -L- PROFILE