

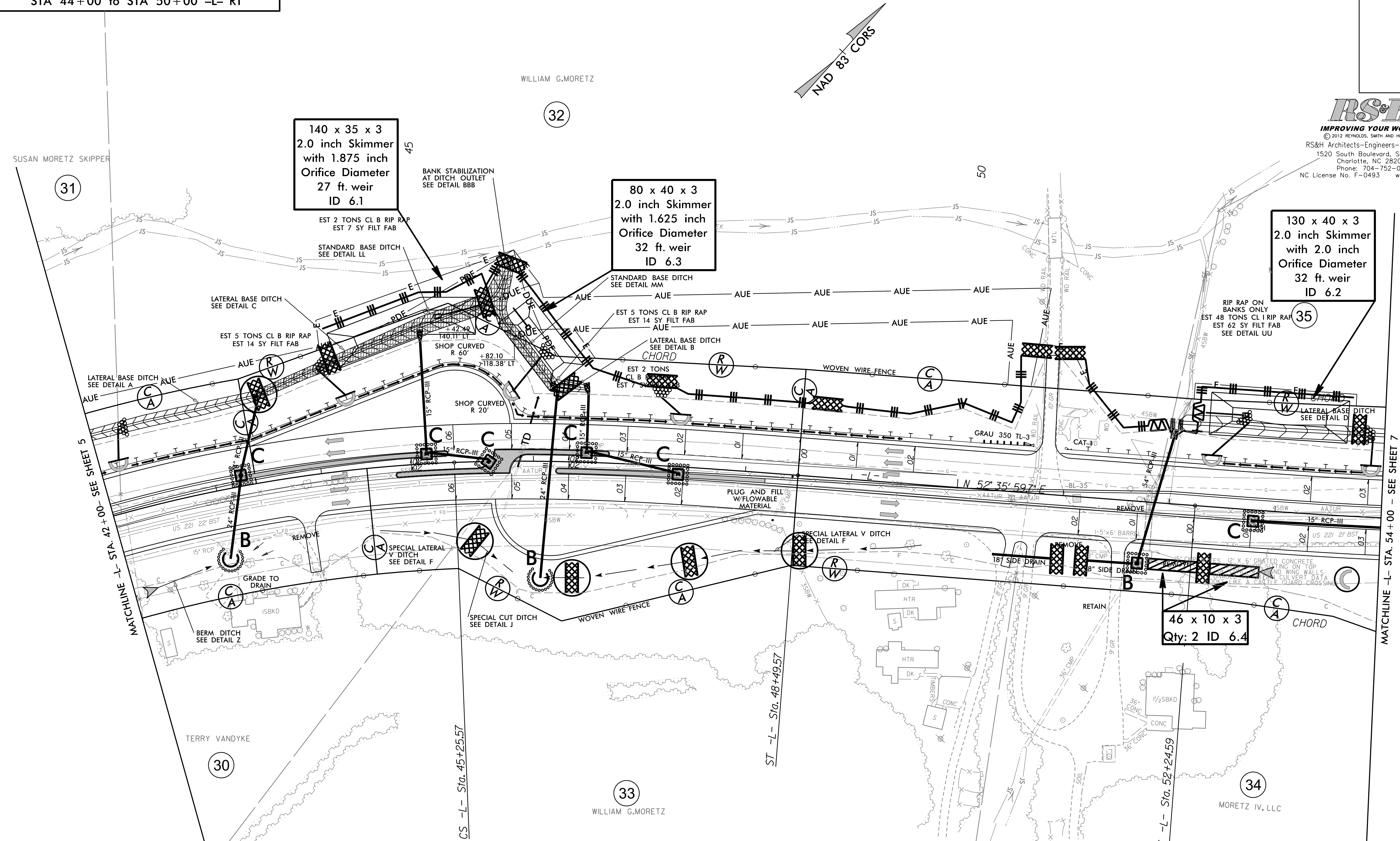
PROJECT REFERENCE NO. R-2915A	SHEET NO. EC-21/CONST.06
RW SHEET NO.	
ROADWAY DESIGN ENGINEER	HYDRAULICS ENGINEER

RS&H
IMPROVING YOUR WORLD
 © 2012 REYNOLDS, SMITH AND HILLS INC.
 RS&H Architects-Engineers-Planners, Inc.
 1520 South Boulevard, Suite 200
 Charlotte, NC 28203
 Phone: 704-752-0610
 NC License No. F-0493 www.rsandh.com

V&M
 Consulting Engineers
 Asheville, NC
 North Carolina
 828-253-2796
 Copyright © 2008 Reynolds & Smith, Inc. All Rights Reserved.

INSTALL MATTING FOR EROSION CONTROL ON SLOPES AS WORK ALLOWS:
 STA 42+00 to STA 54+00 -L- LT
 STA 44+00 to STA 50+00 -L- RT

INSTALL MATTING FOR EROSION CONTROL IN THE PROPOSED DITCH LINE.



-L- HORIZONTAL CURVE DATA

Pls Sta 34+77.26 Os = 6° 37' 47.8" Ls = 324.00' LT = 216.15' ST = 108.14'	Pls Sta 40+73.85 Δ = 38° 29' 20.0" (RT) D = 4° 05' 33.2" L = 940.46' T = 488.75' R = 1,400.00' SE = 06 RO = 324	Pls Sta 46+33.70 Os = 6° 37' 47.8" Ls = 324.00' LT = 216.15' ST = 108.14'
Pls Sta 54+40.72 Os = 6° 11' 16.6" Ls = 324.00' LT = 216.13' ST = 108.12'	Pls Sta 56+67.67 Δ = 9° 04' 42.1" (LT) D = 3° 49' 11.0" L = 237.67' T = 119.08' R = 1,500.00' SE = 06 RO = 237.67	Pls Sta 58+94.38 Os = 6° 11' 16.6" Ls = 324.00' LT = 216.13' ST = 108.12'

\$FILE\$
\$DATE\$

SEE SHEET 22 FOR -L- PROFILE